

Setting Up Your MX350 In Default Mode (Tel Priority Mode) With An Answering Machine DSL/Cable Modem Connection

Connecting The Phone Lines

Connecting Your Phone/Answering Machine

Is your answering machine built into your phone?

YES

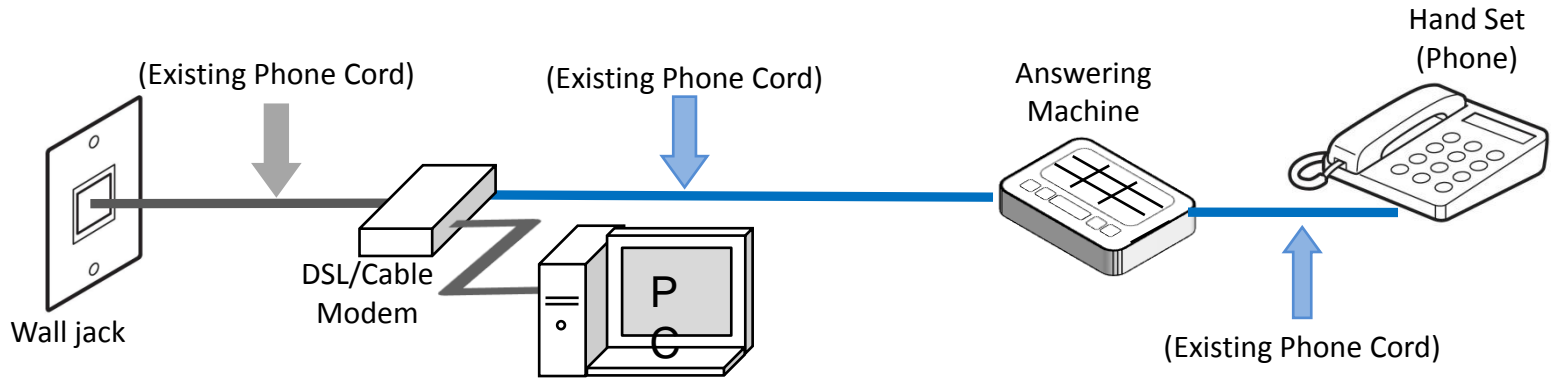
Click Here or Go To Page 12

NO

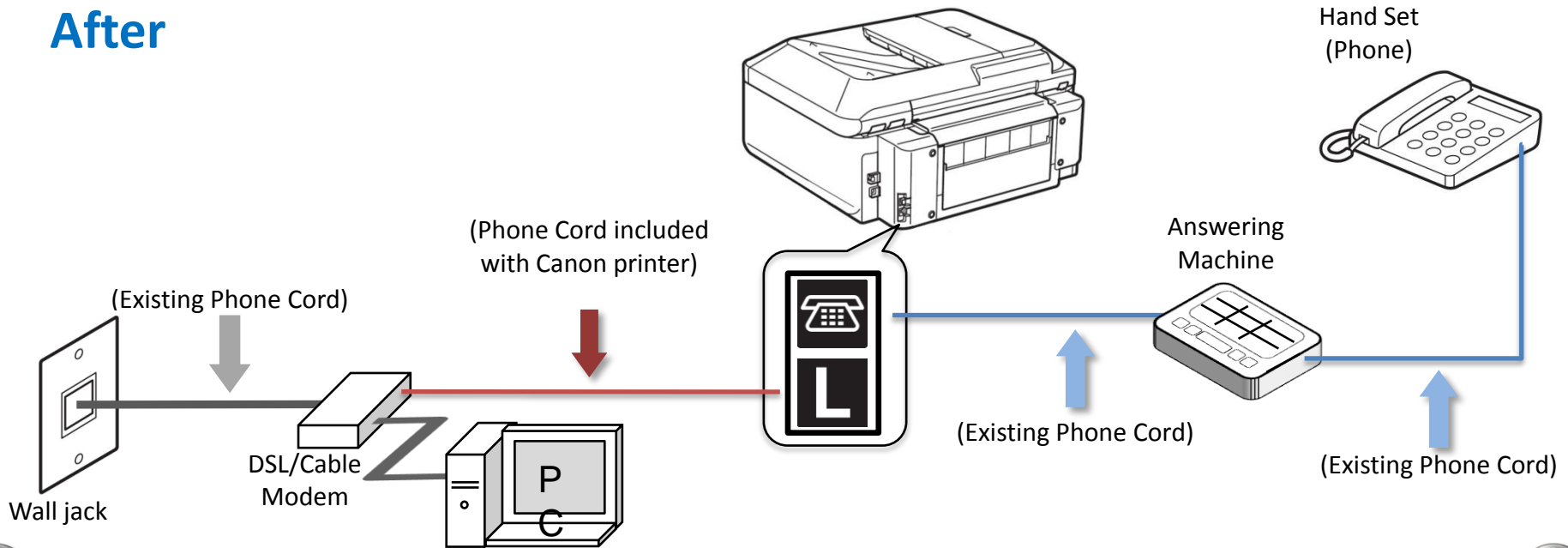
Click the Next Button

Fax to Phone Line Connection

Before



After

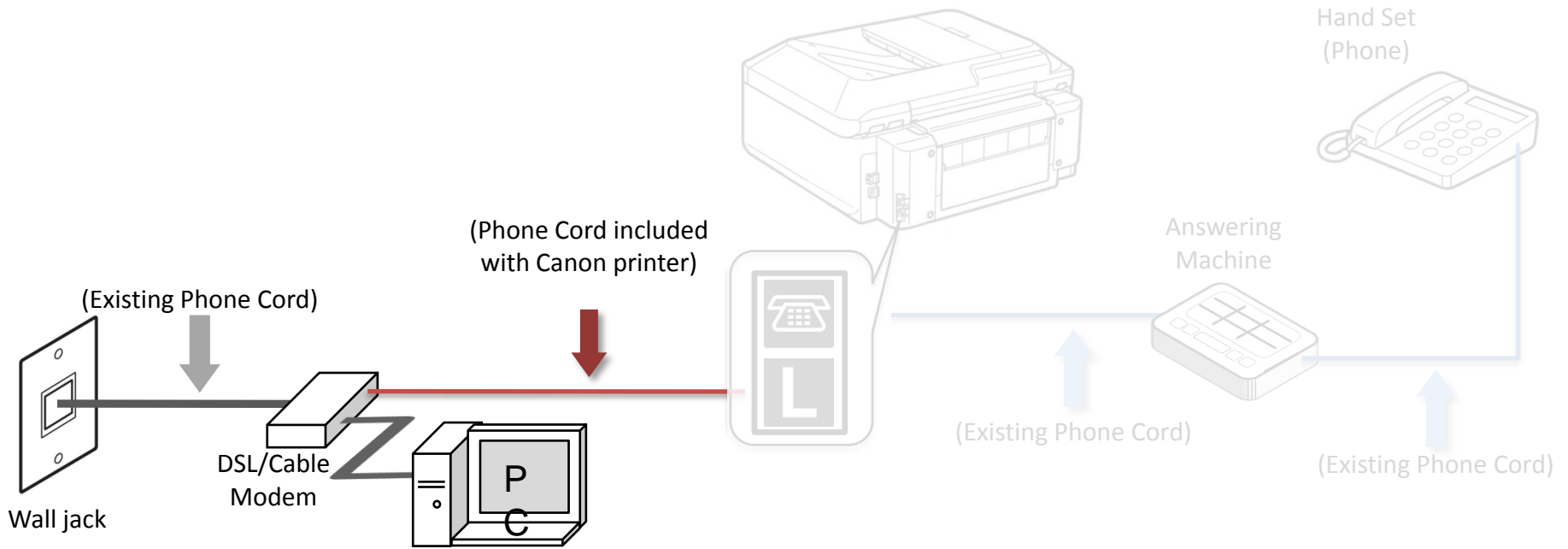


[Previous](#)

[Next](#)

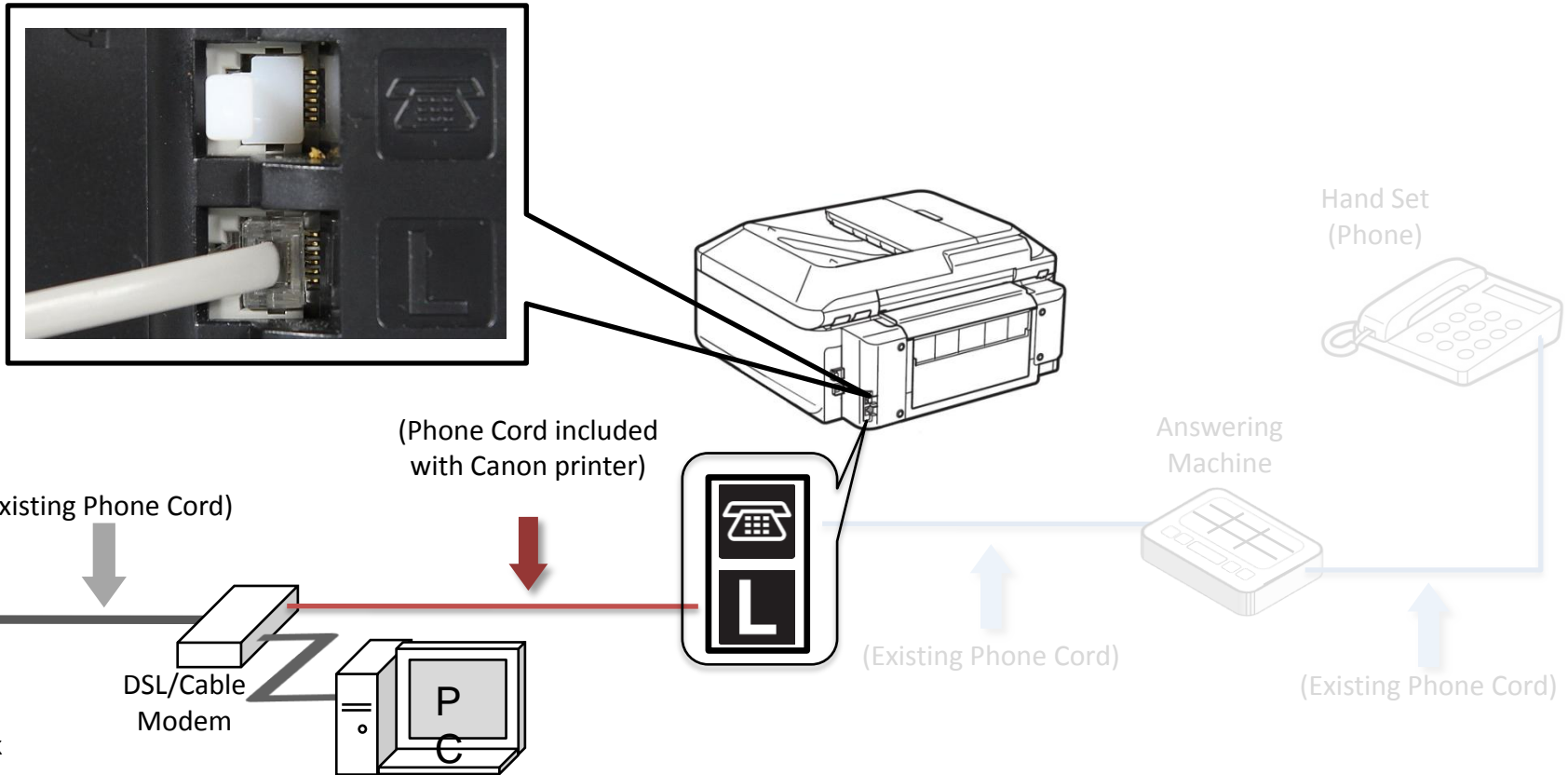
Fax to Phone Line Connection

- Plug the provided phone cord into the DSL/Cable Modem



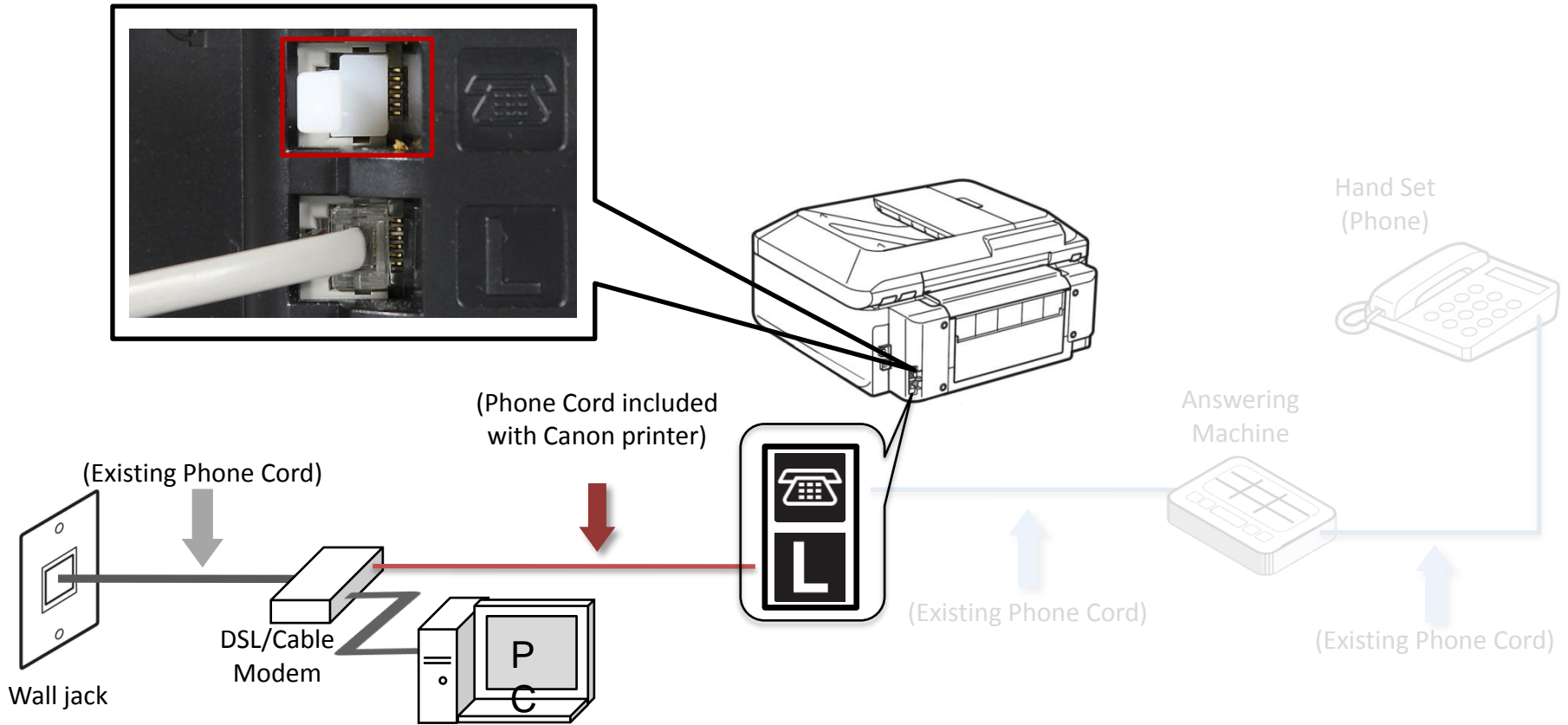
Fax to Phone Line Connection

- Plug the provided phone cord into the “L” jack in the rear of the multifunction



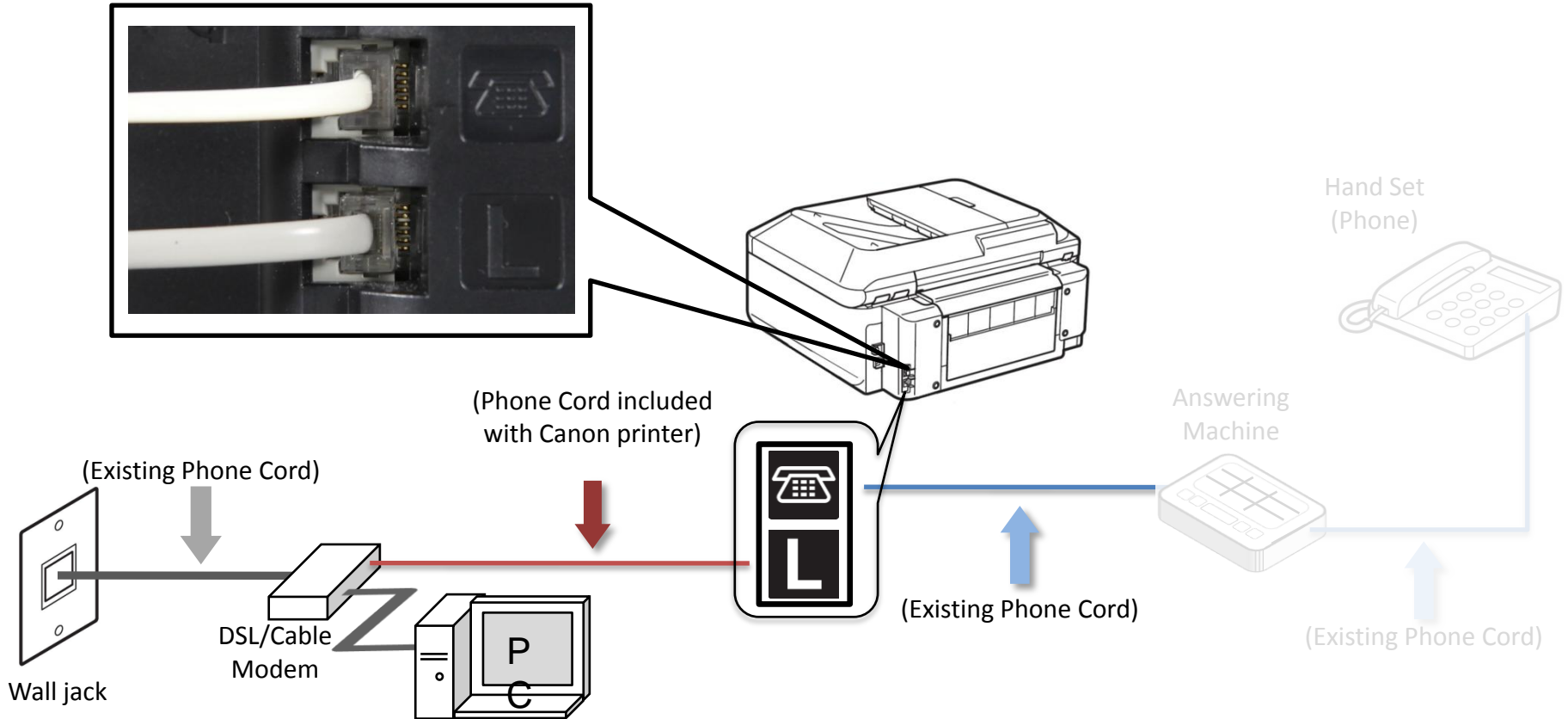
Fax to Phone Line Connection

- Remove the white plug from the upper jack



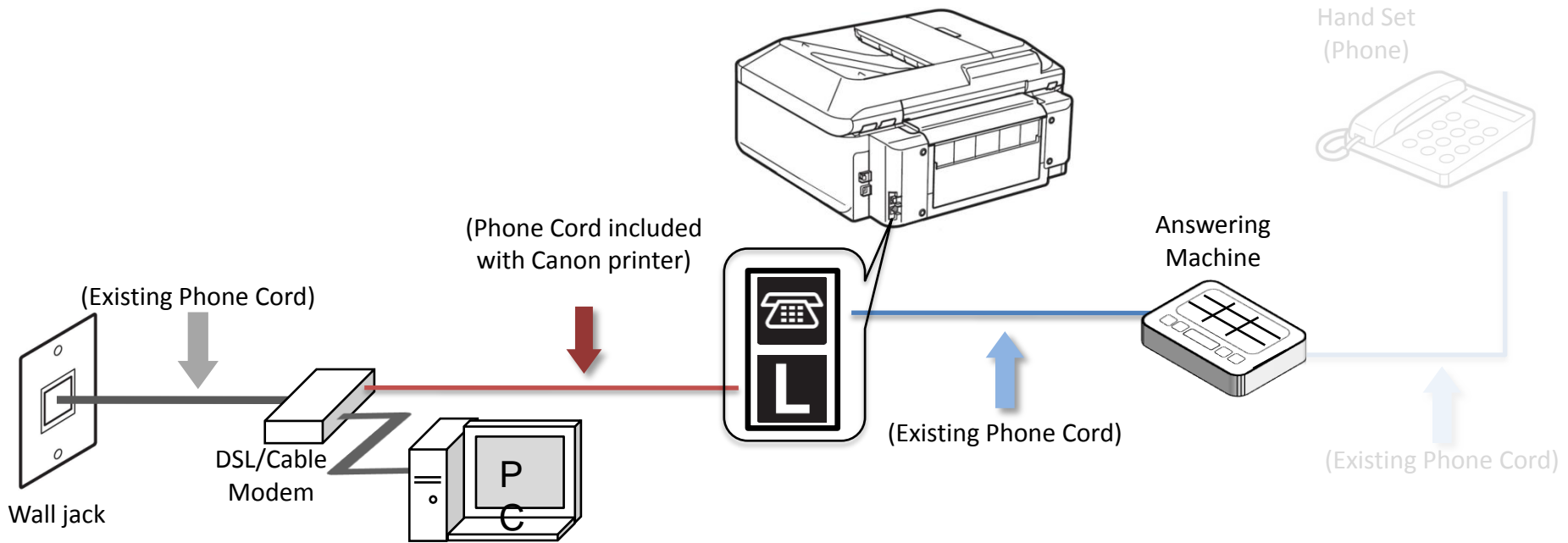
Fax to Phone Line Connection

- Plug the second phone cord into the jack marked with an image of a “telephone” located on the rear of the multifunction.



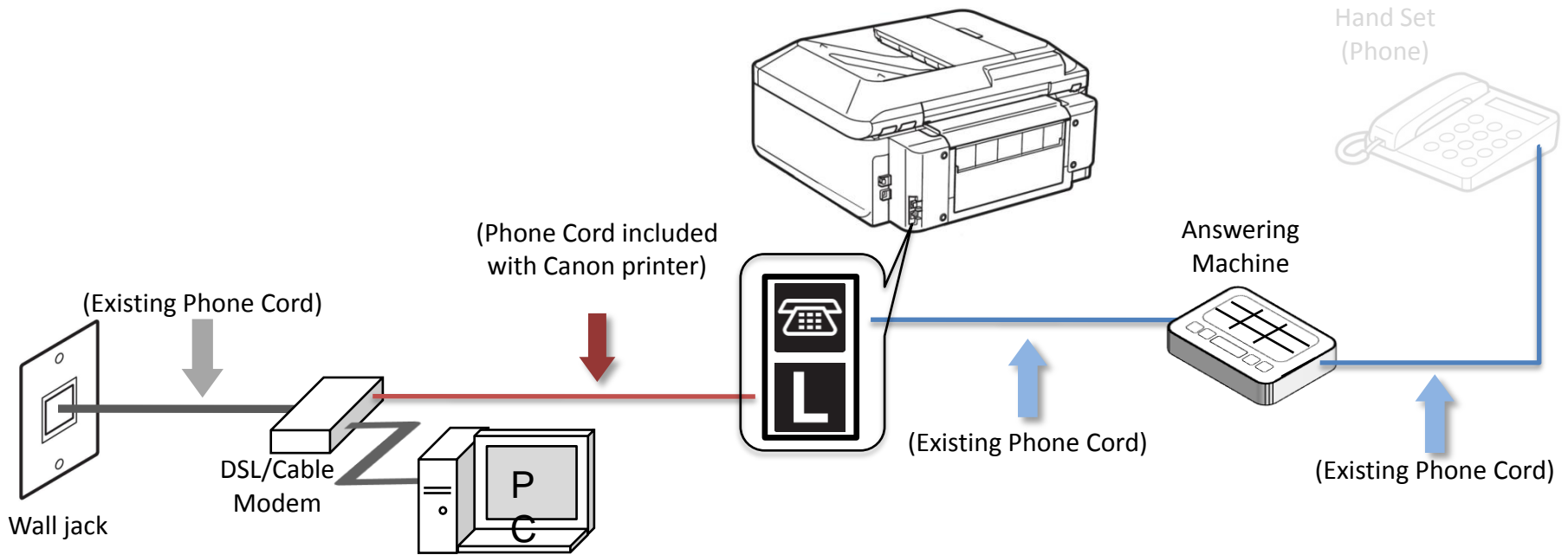
Fax to Phone Line Connection

- Plug the second phone cord into the answering machine



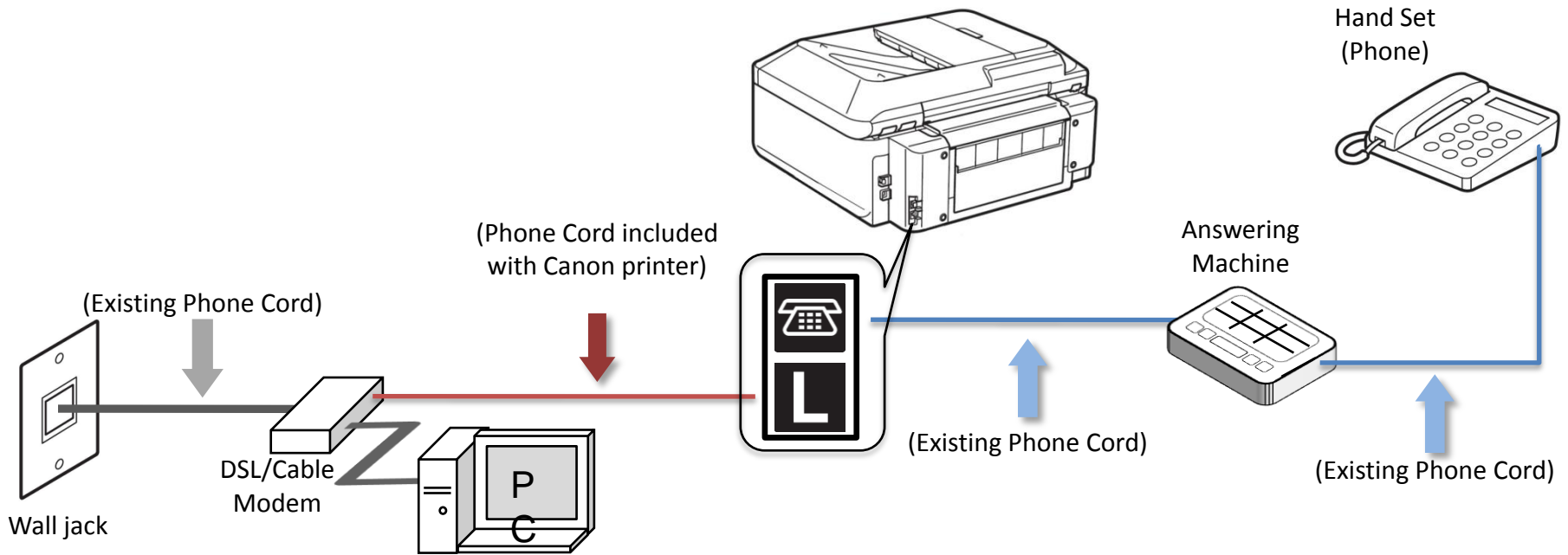
Fax to Phone Line Connection

- Plug the third phone cord into the answering machine



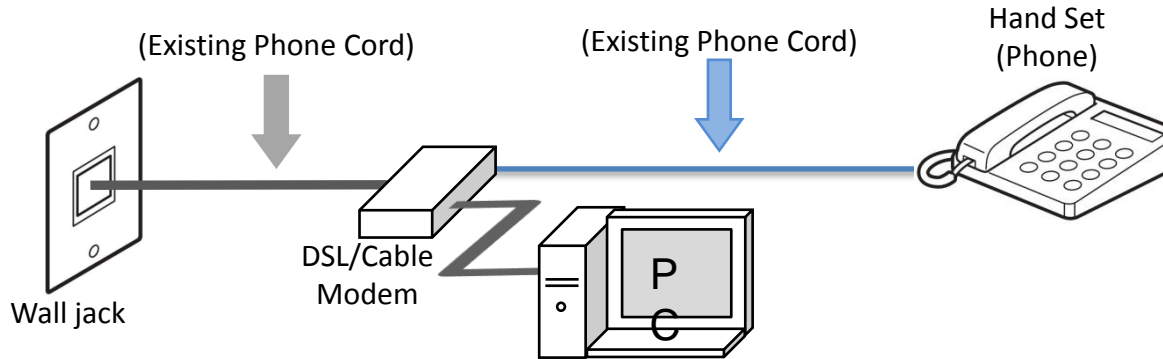
Fax to Phone Line Connection

- Plug the third phone cord into the phone

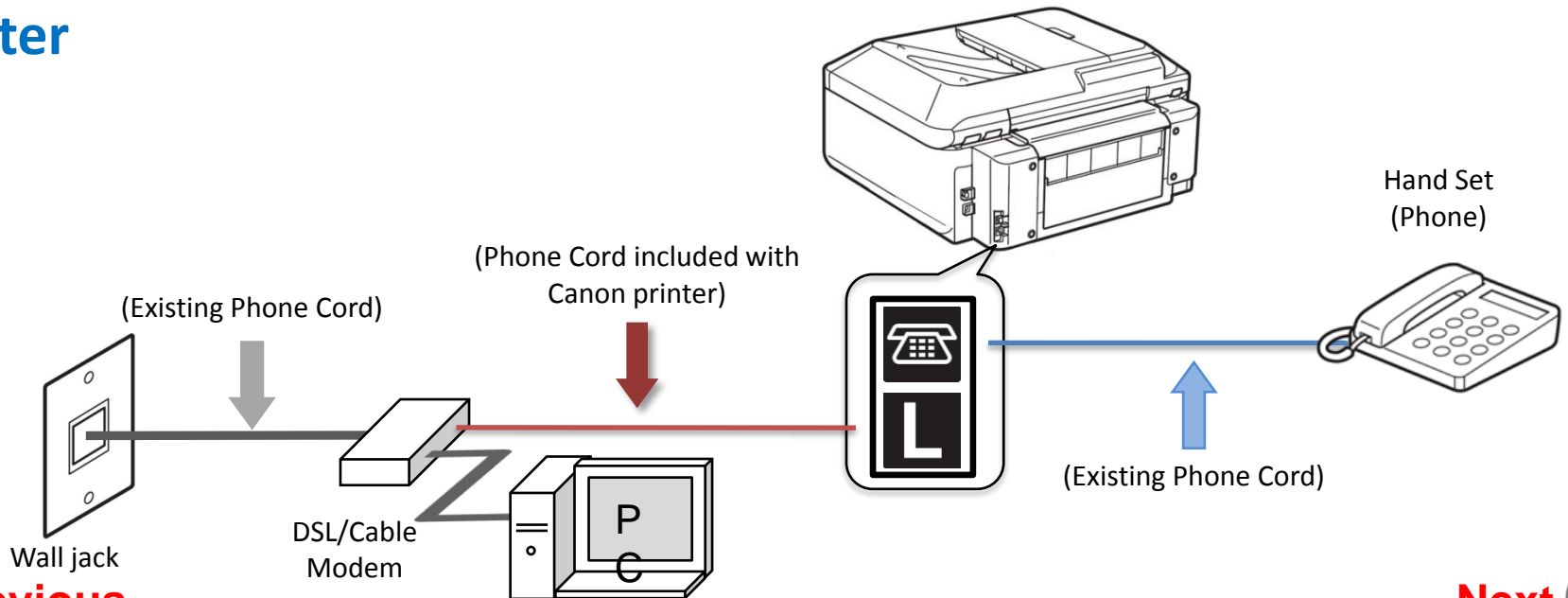


Fax to Phone Line Connection

Before



After

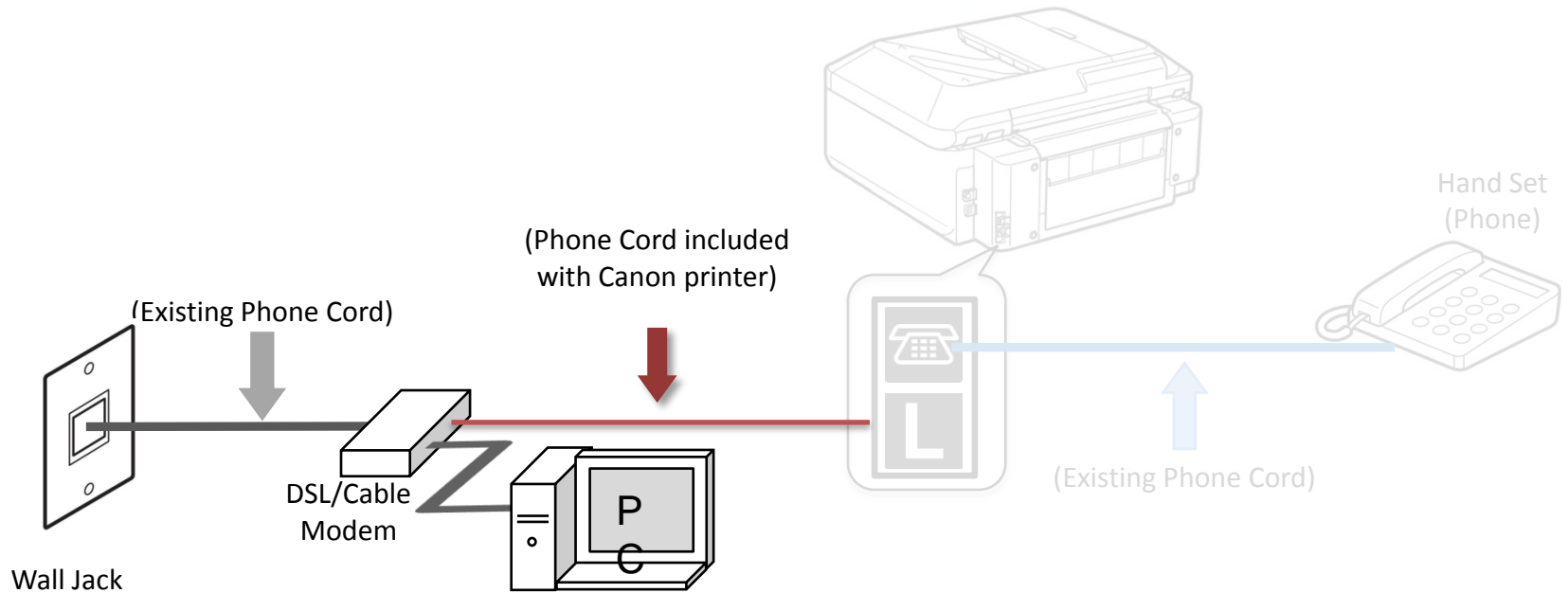


[Previous](#)

[Next](#)

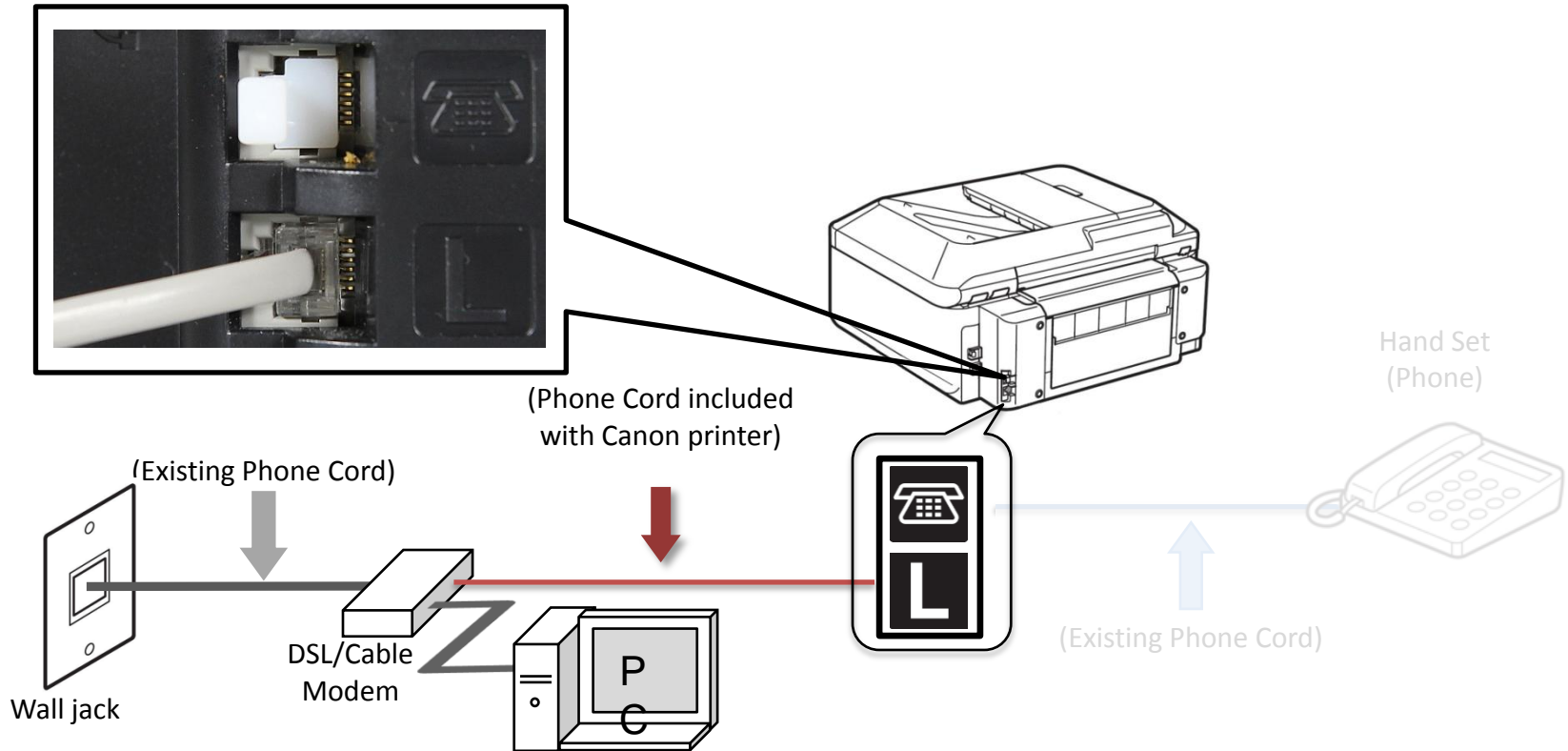
Fax to Phone Line Connection

- Plug the provided phone cord into the DSL/Cable Modem



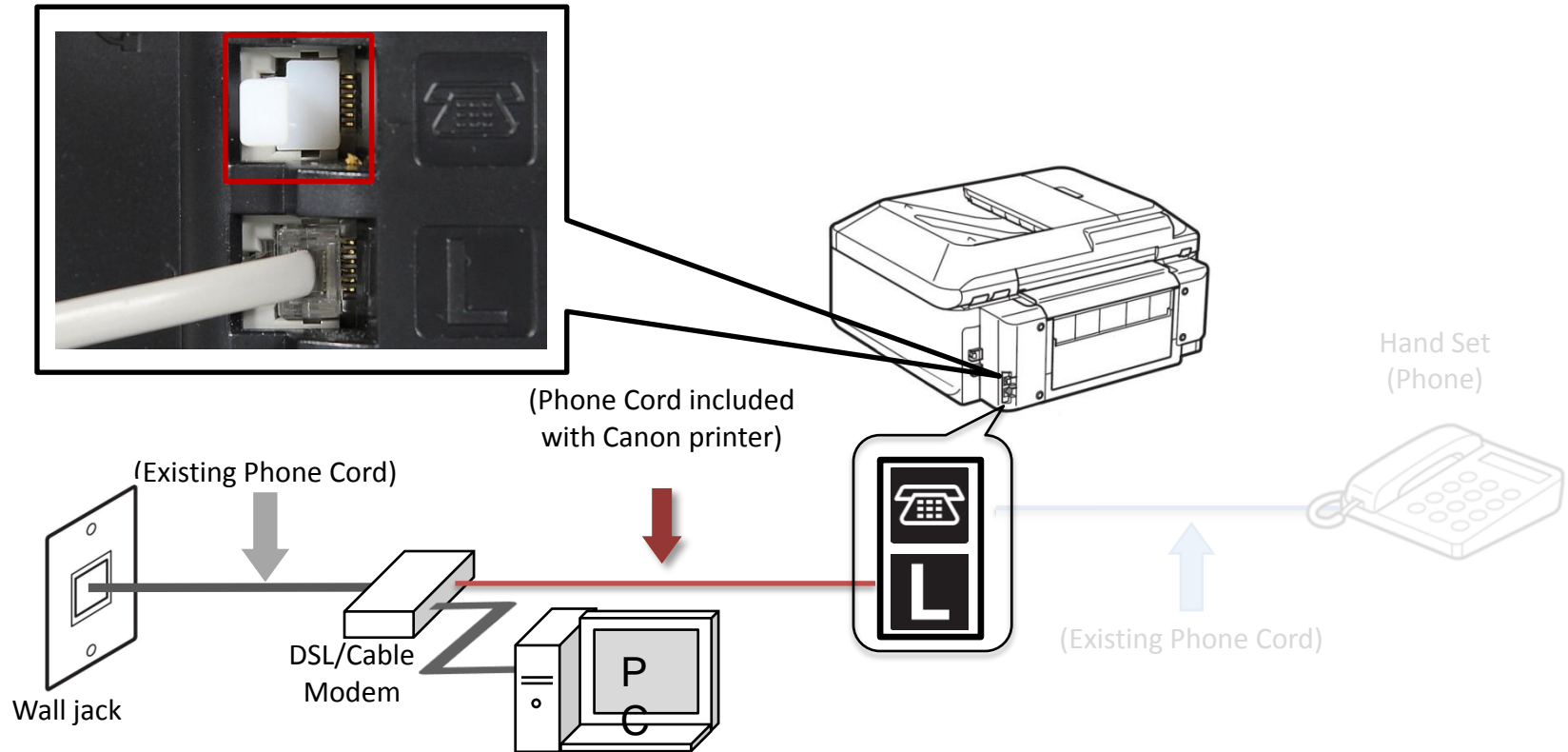
Fax to Phone Line Connection

- Plug the provided phone cord into the “L” jack in the rear of the multifunction



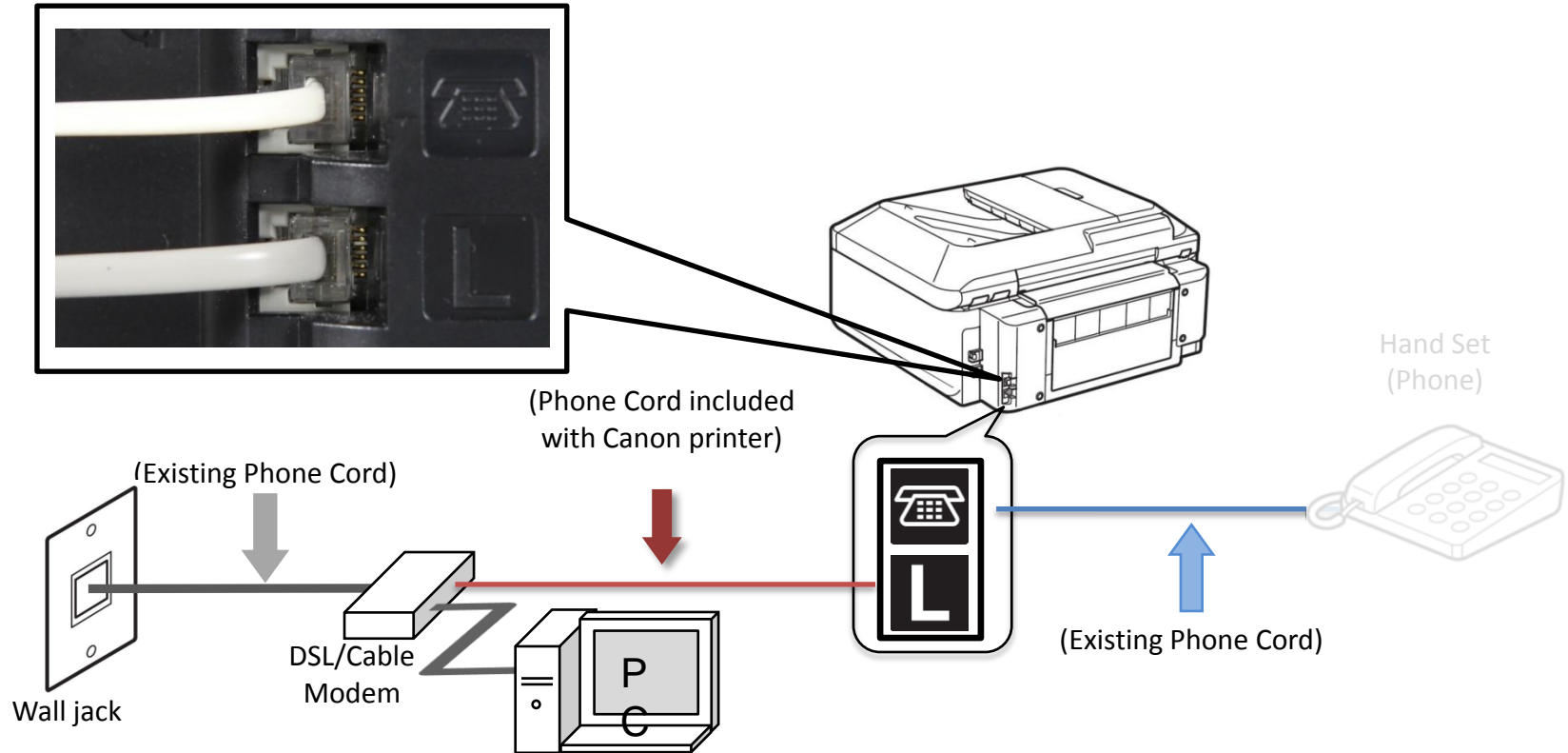
Fax to Phone Line Connection

- Remove the white plug from the upper jack



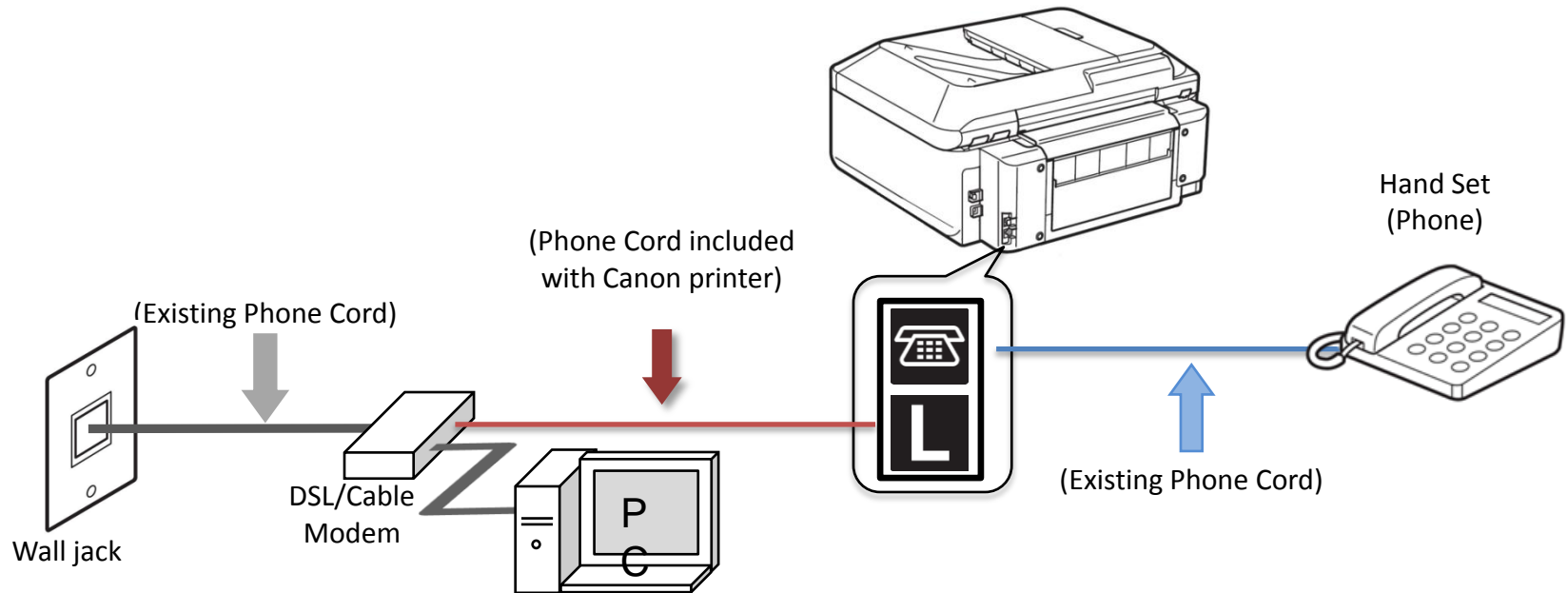
Fax to Phone Line Connection

- Plug the second phone cord into the jack marked with an image of a “telephone” located on the rear of the multifunction.



Fax to Phone Line Connection

- Plug the existing phone cord into the phone



Setting Up The Receive Mode



Return To “Connecting Your Phone/Answering Machine”

Next



Step 1

Turn on the MX350 by pressing the **ON** button.



Step 2

Press the **FAX** button.



Step 3

The fax standby screen will appear.



Step 4

Press the center **FUNCTION** button.



Step 5

The Receive mode settings screen will appear.



Step 6

Use the **UP** or **DOWN** button to select "TEL priority mode".



Step 7

Ensure that “TEL priority mode” is highlighted.



Step 8

Press the **OK** button.



Step 9

Your MX350 is now set to Tel priority mode. Notice that the mode is listed on the fax standby screen.



Receiving A Fax

To receive a fax when you are home you will:

- Pick up the handset on the phone connected to the MX350.
- Listen for fax tones.
- When the tones stop hang up the handset.
- The MX350 will receive the fax document.

To receive a fax while you are away:

- The answering machine will answer the call.
- If fax tones are heard by the MX350 it will take over the call and receive the fax document.

IMPORTANT: In order to receive a fax, you must either pick up the handset on a phone that is connected to the MX350 or let your answering machine answer the call.

