



Setting Up Your MX320 In Default Mode (Tel Priority Mode) Without An Answering Machine DSL/Cable Modem Connection



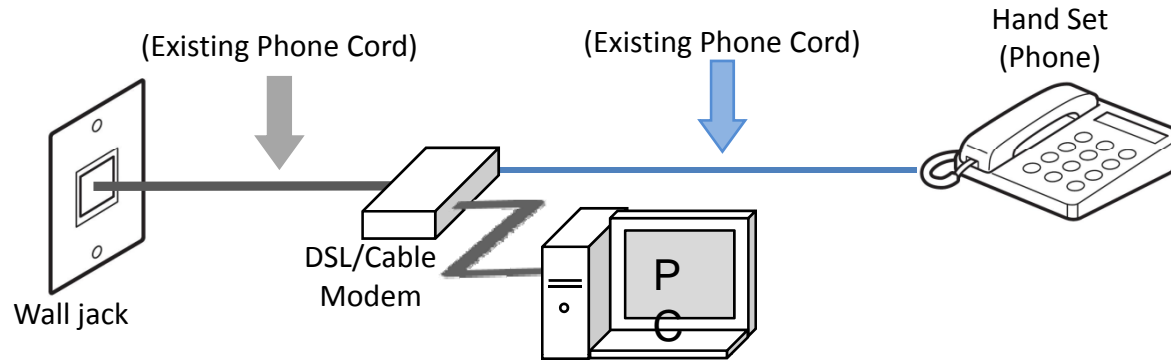


Connecting The Phone Lines

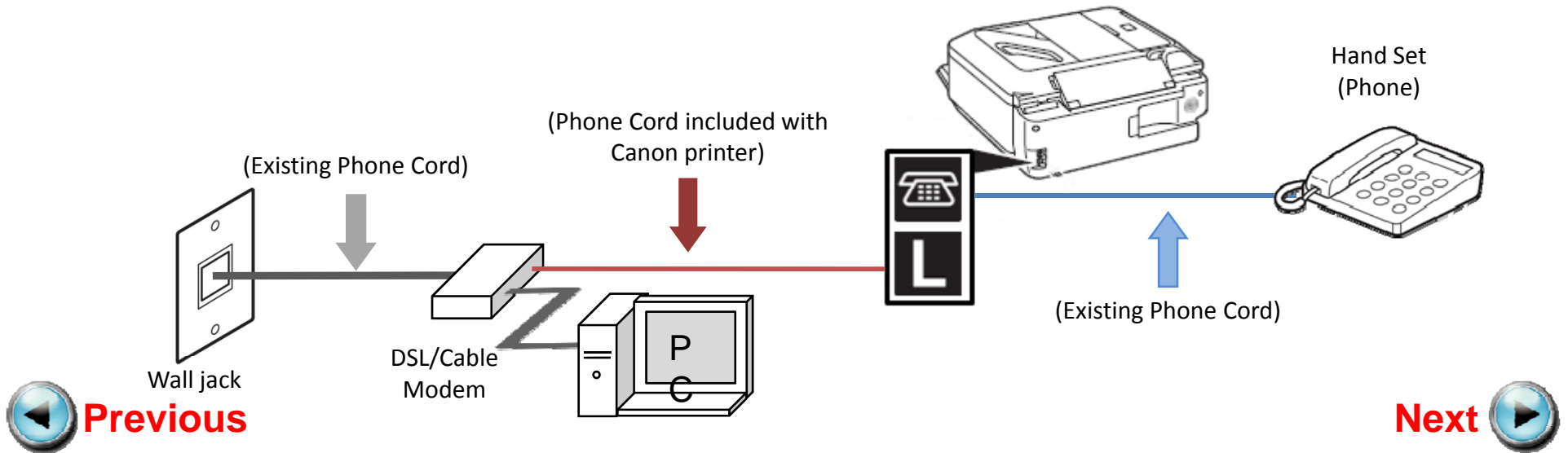


Fax to Phone Line Connection

Before

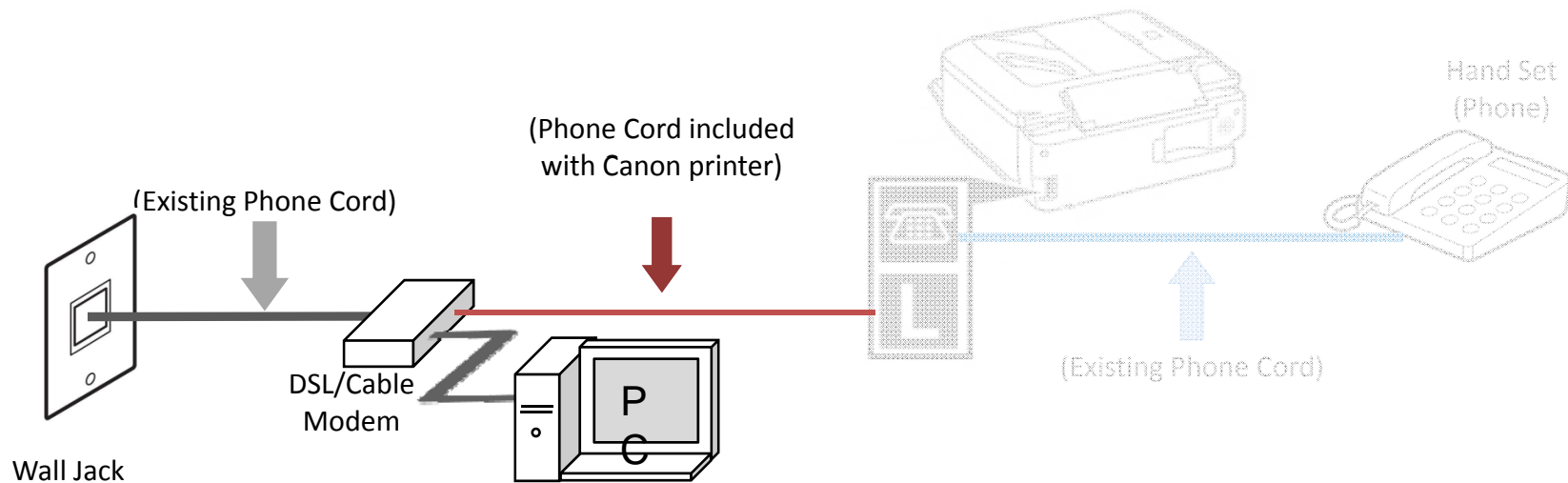


After



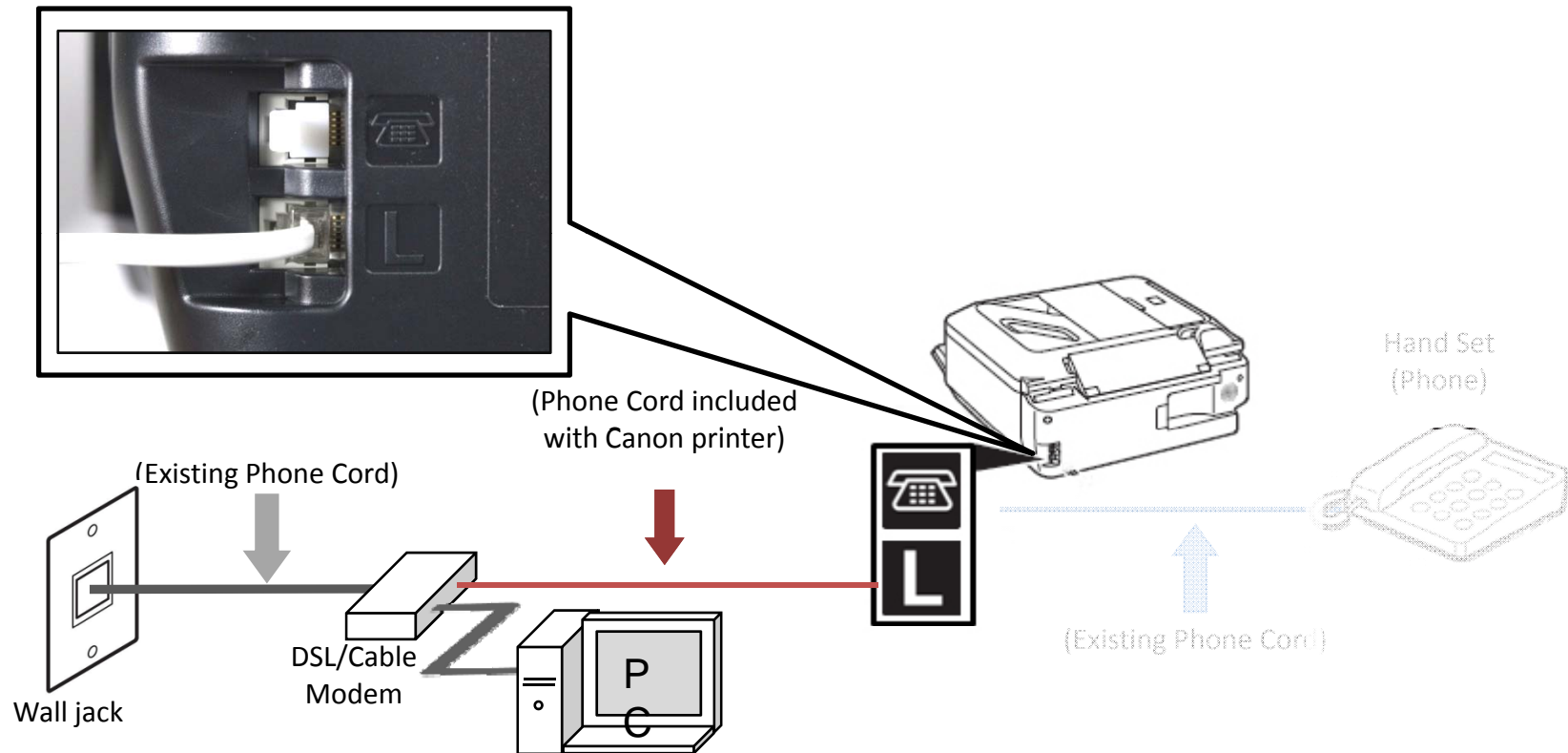
Fax to Phone Line Connection

- Plug the provided phone cord into the DSL/Cable Modem



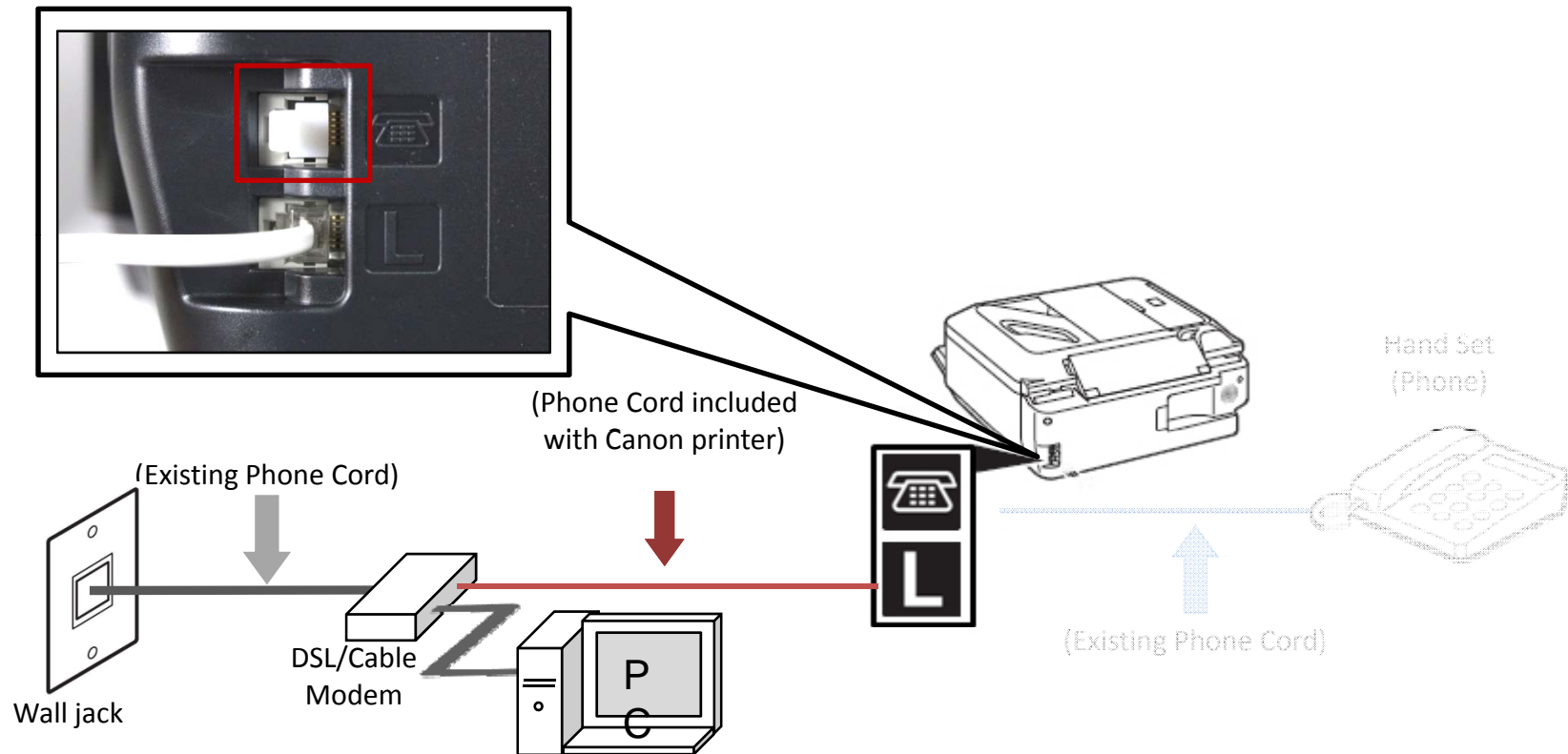
Fax to Phone Line Connection

- Plug the provided phone cord into the “L” jack in the rear of the multifunction



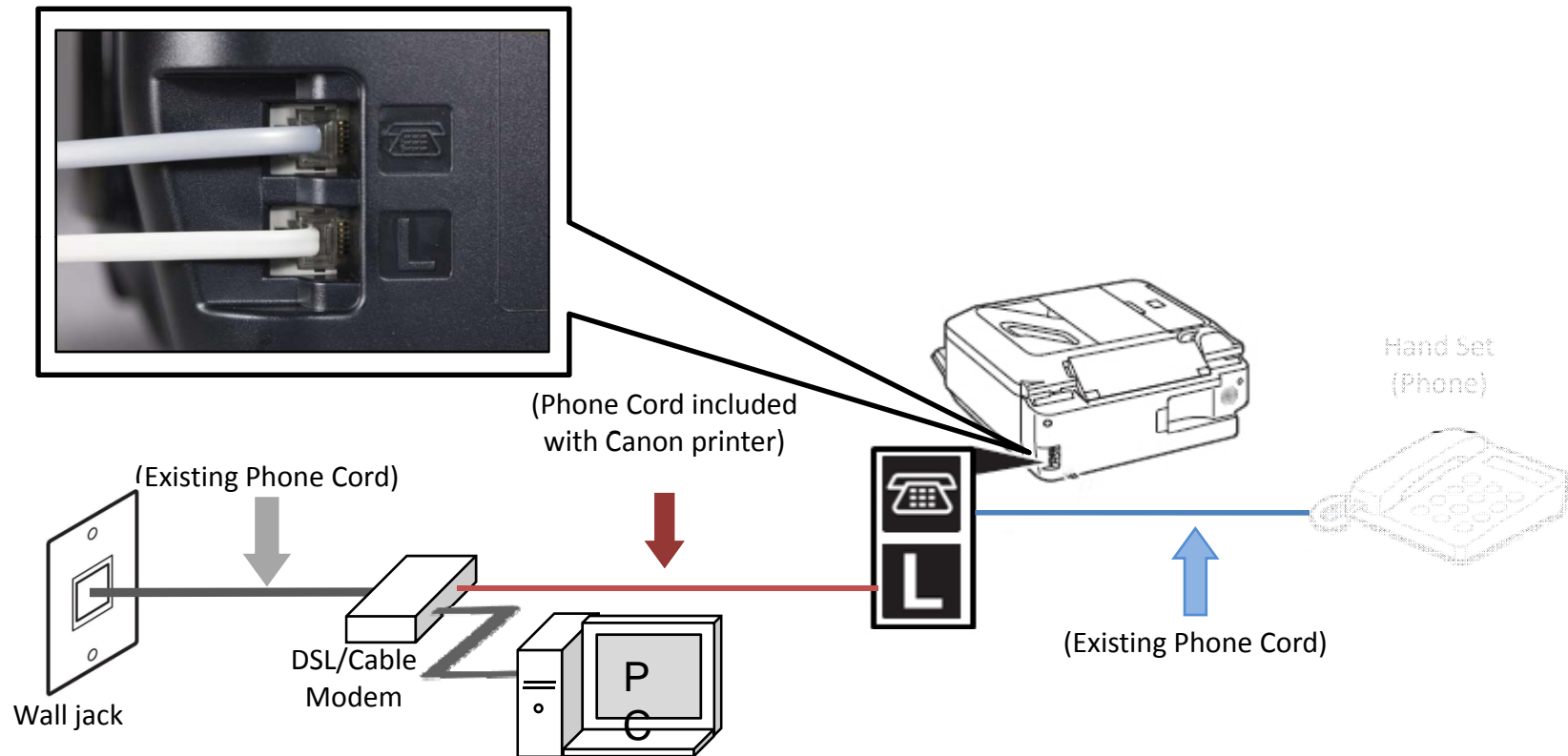
Fax to Phone Line Connection

- Remove the white plug (D) from the upper jack



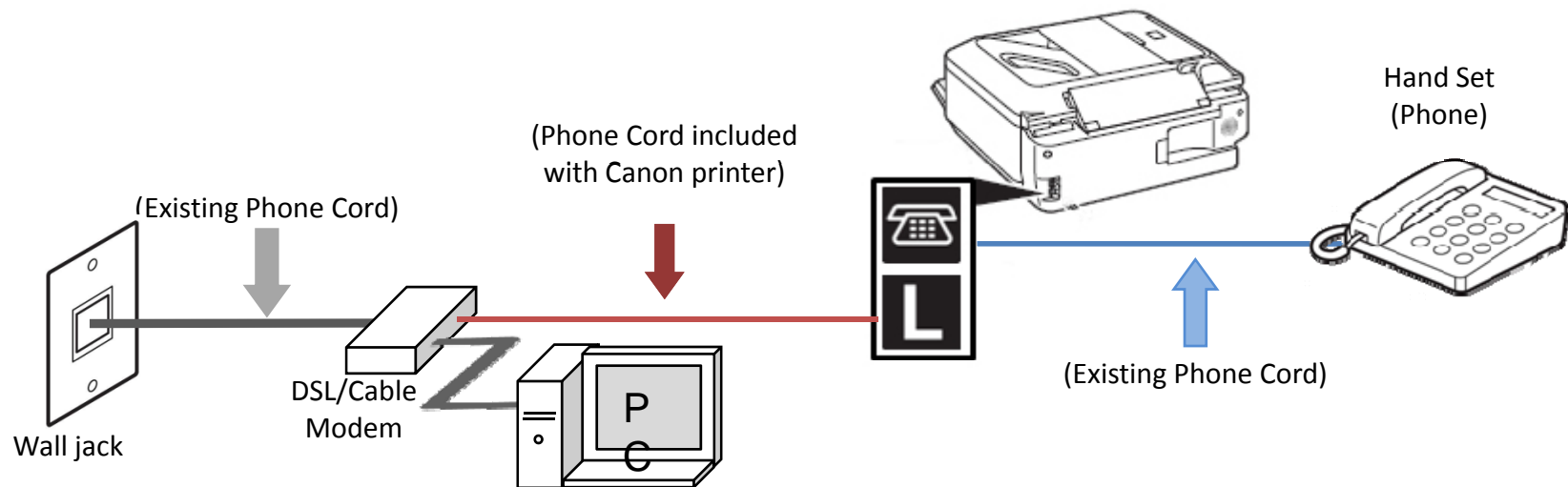
Fax to Phone Line Connection

- Plug the second phone cord into the “telephone” jack located on the rear of the multifunction



Fax to Phone Line Connection

- Plug the existing phone cord into the phone





Setting Up The Receive Mode



Step 1

Turn on the MX320 by pressing the **ON** button.



Step 2

Press the **FAX** button.



Step 3

The fax standby screen will appear.



Step 4

Press **Menu** button.



Step 5

The Fax settings menu will appear.



Step 6

Press the **OK** button.



Step 7

The “Receive mode set.” screen will appear.



Step 8

Use the **LEFT** or **RIGHT** button to select “TEL priority mode”.



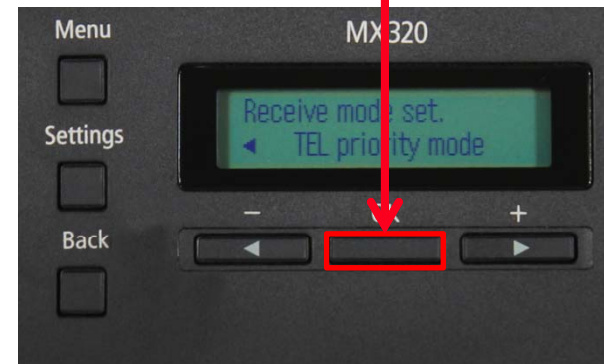
Step 9

Ensure "TEL priority mode" is selected



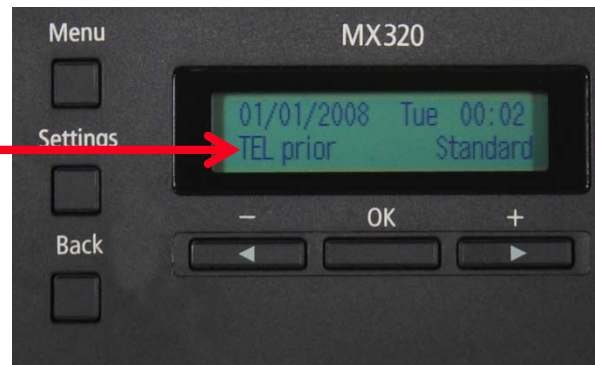
Step 10

Press the **OK** button



Step 11

Your MX320 is now set to TEL priority mode. Notice that the mode is listed on the fax standby screen.



Receiving A Fax

To receive a fax:

- Pick up the handset on the phone connected to the MX320.
- Listen for fax tones.
- When the tones stop hang up the handset.
- The MX320 will receive the fax document.

IMPORTANT: In order to receive a fax, you must pick up the handset on a phone that is connected to the multifunction.

