



# Setting Up Your MX320 In Default Mode (Tel Priority Mode) With An Answering Machine





# Connecting The Phone Lines



# Connecting Your Phone/Answering Machine

Is your answering machine built into your phone?

**YES**

Click Here or Go To Page 12

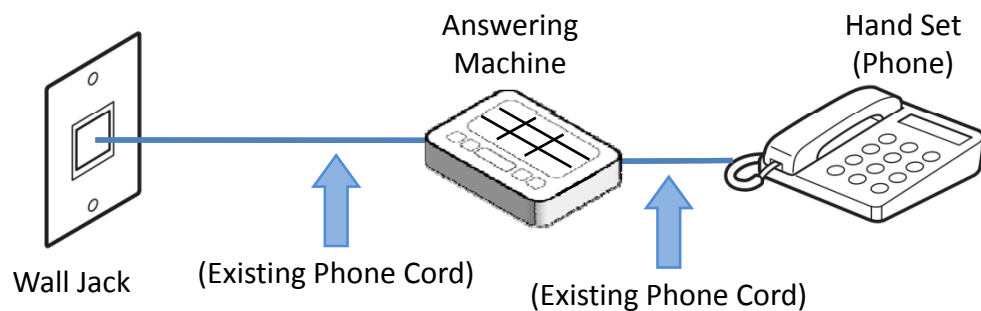
**NO**

Click the Next Button

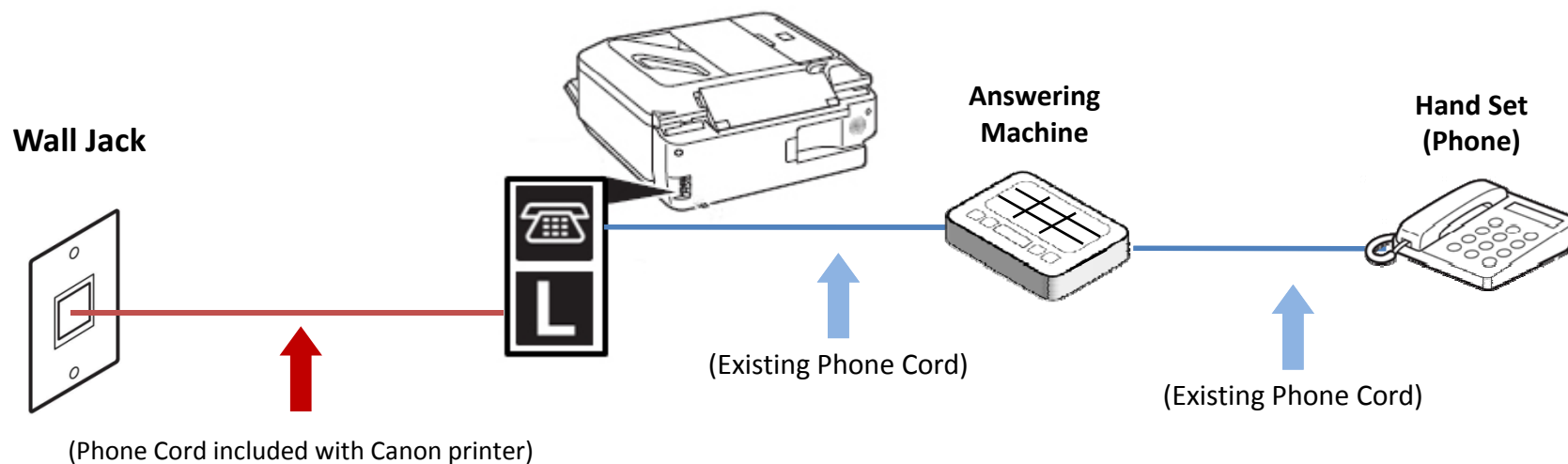


# Fax to Phone Line Connection

## Before

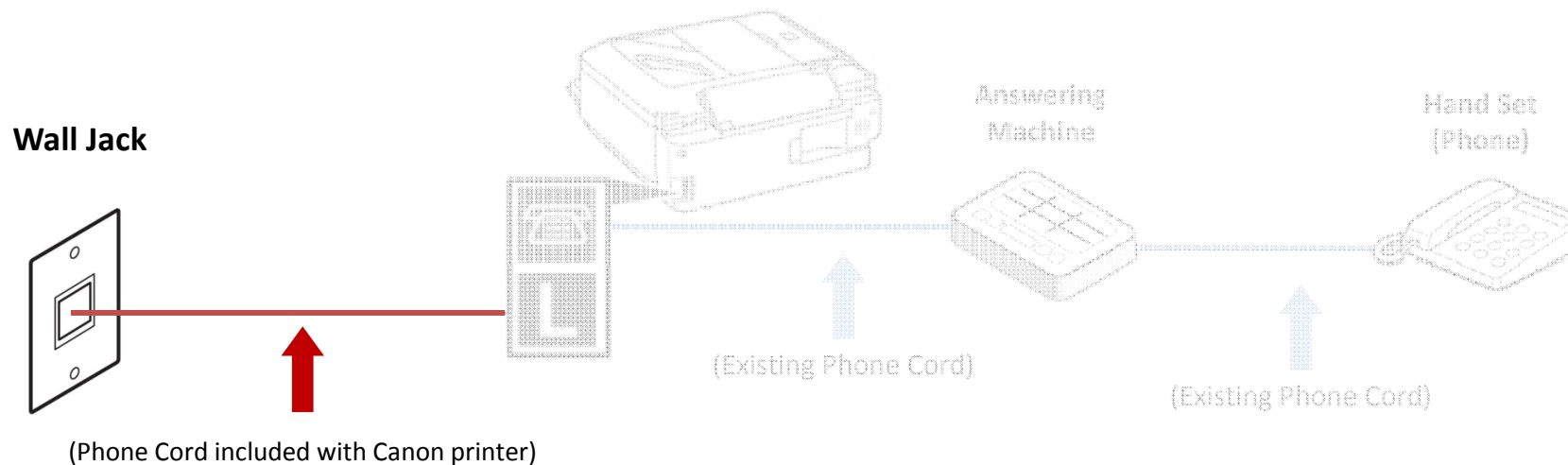


## After



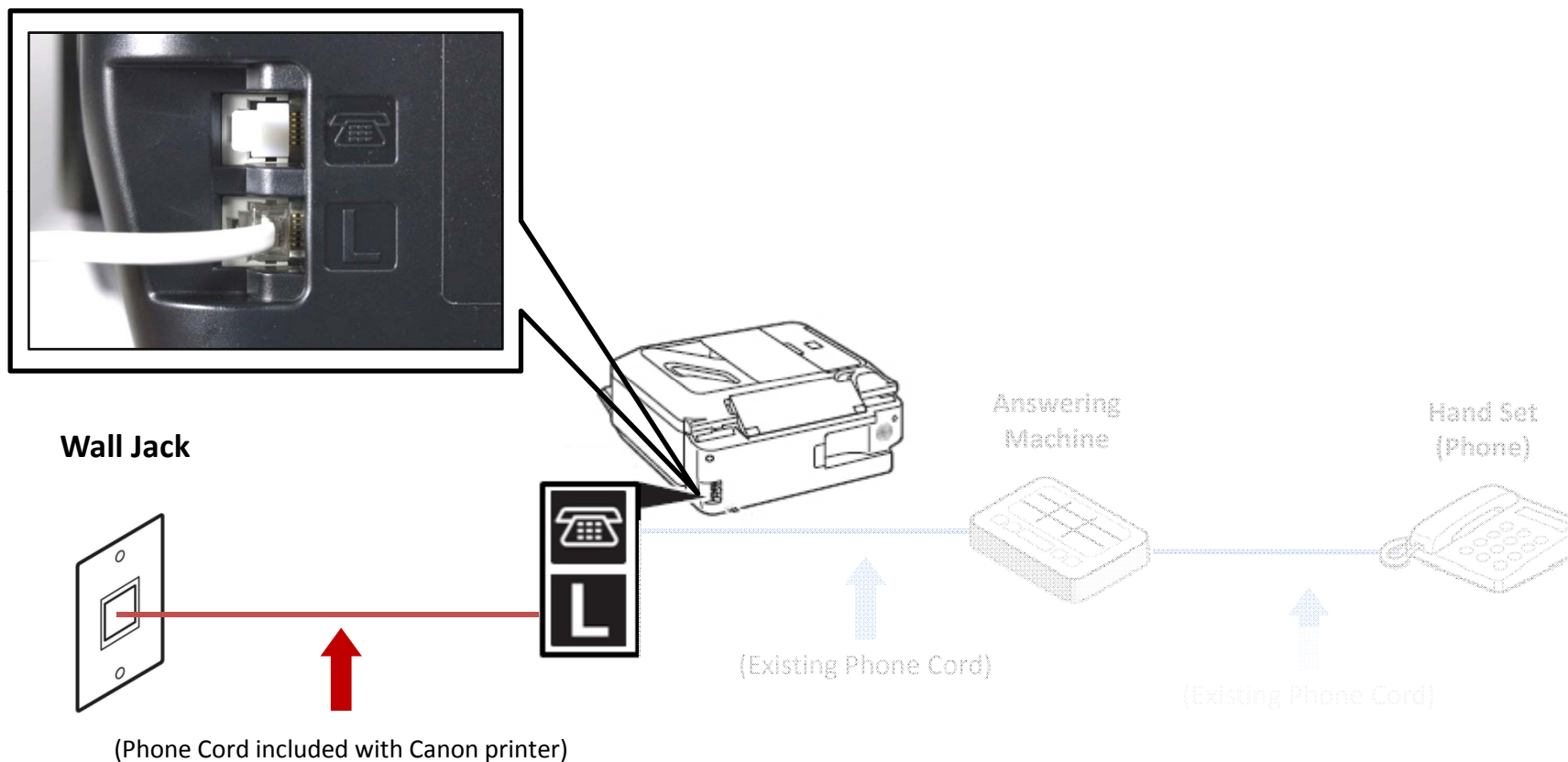
# Fax to Phone Line Connection

- Plug the provided phone cord into the wall jack



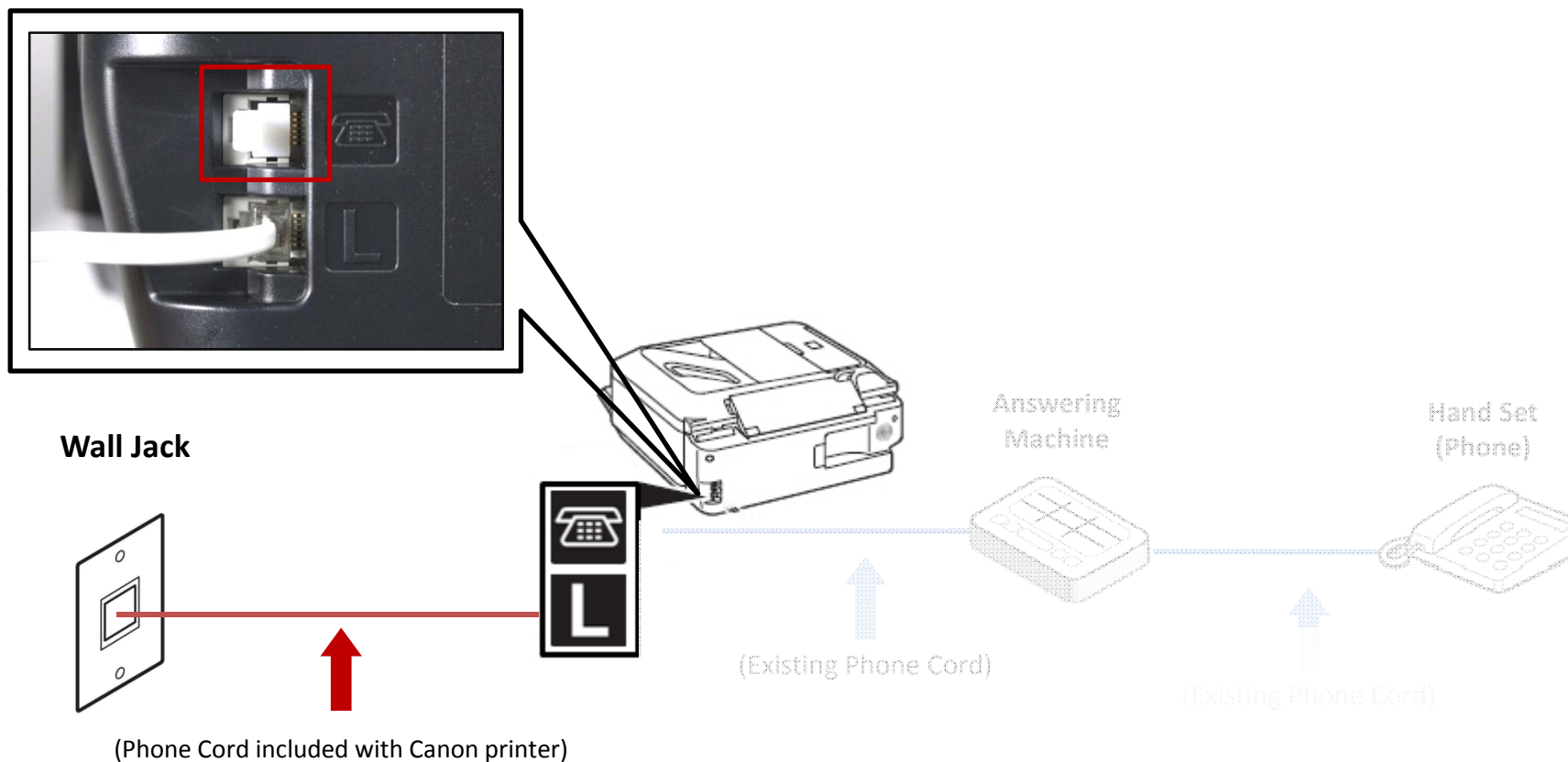
# Fax to Phone Line Connection

- Plug the provided phone cord into the “L” jack located on the rear of the multifunction



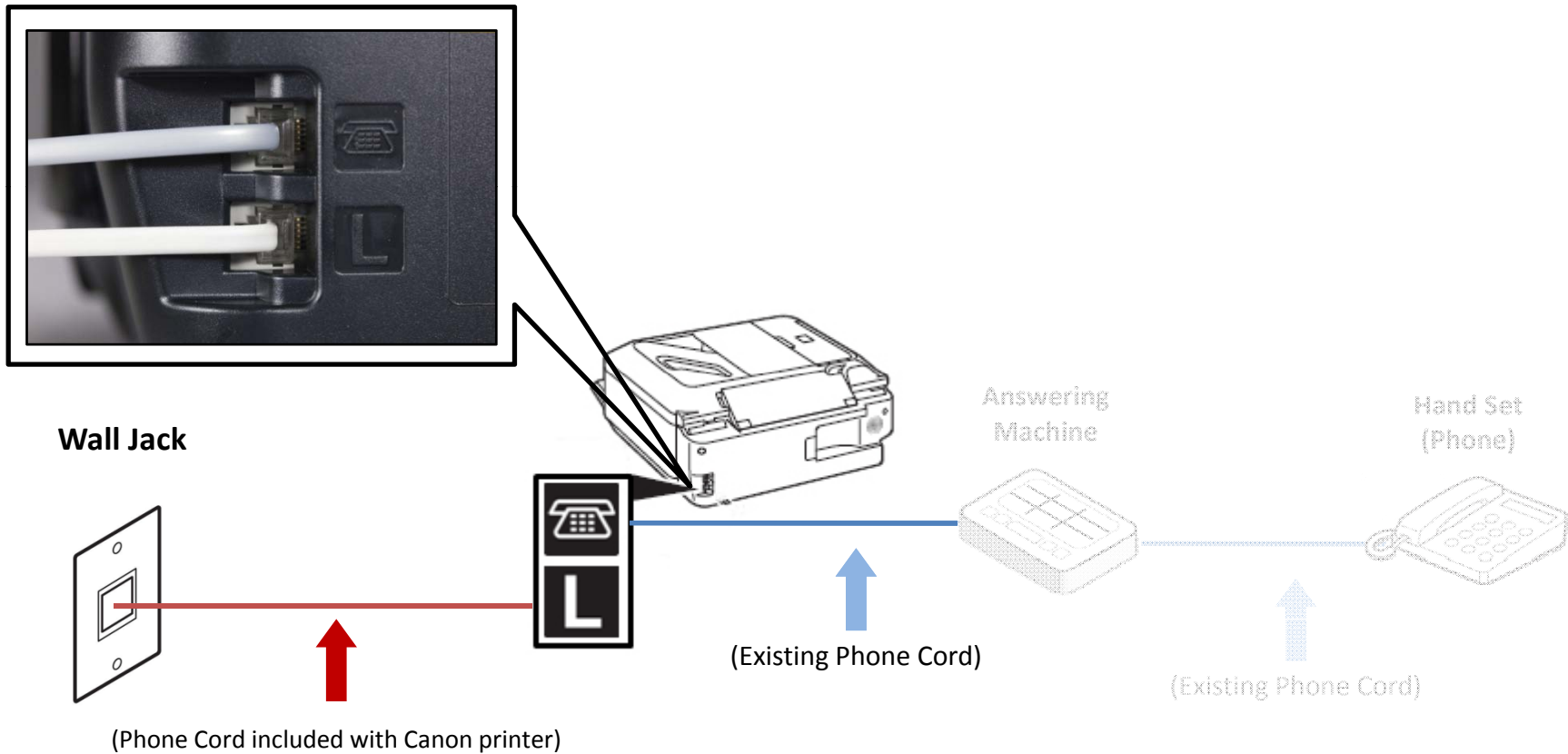
# Fax to Phone Line Connection

- Remove the white plug (D) from the upper jack



# Fax to Phone Line Connection

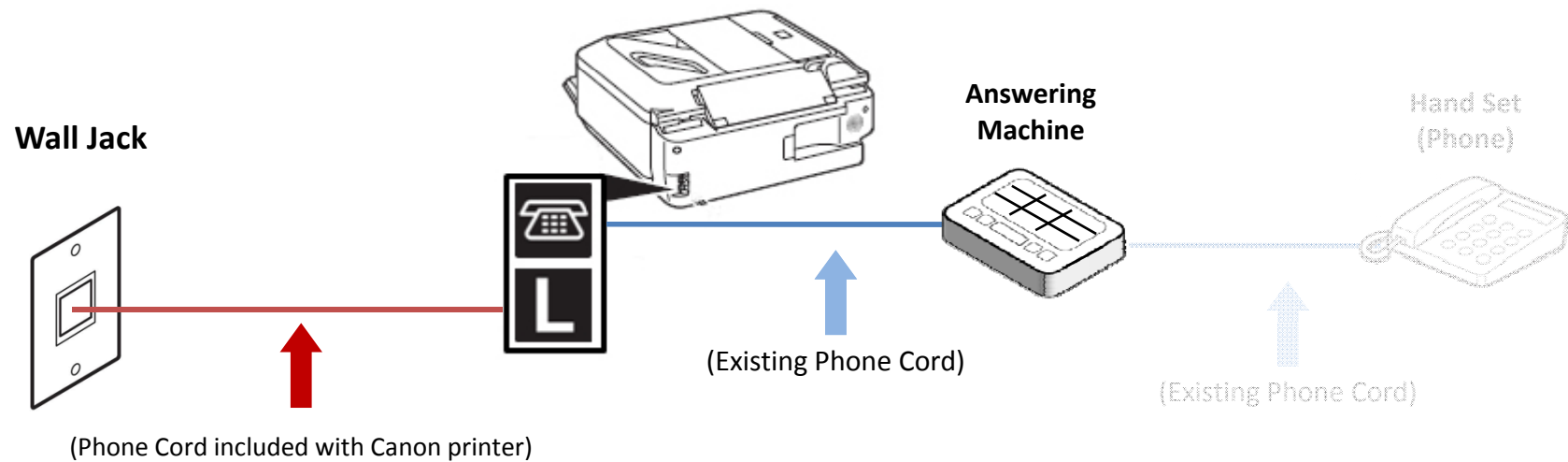
- Plug the second phone cord into “telephone” jack located on the rear of the multifunction





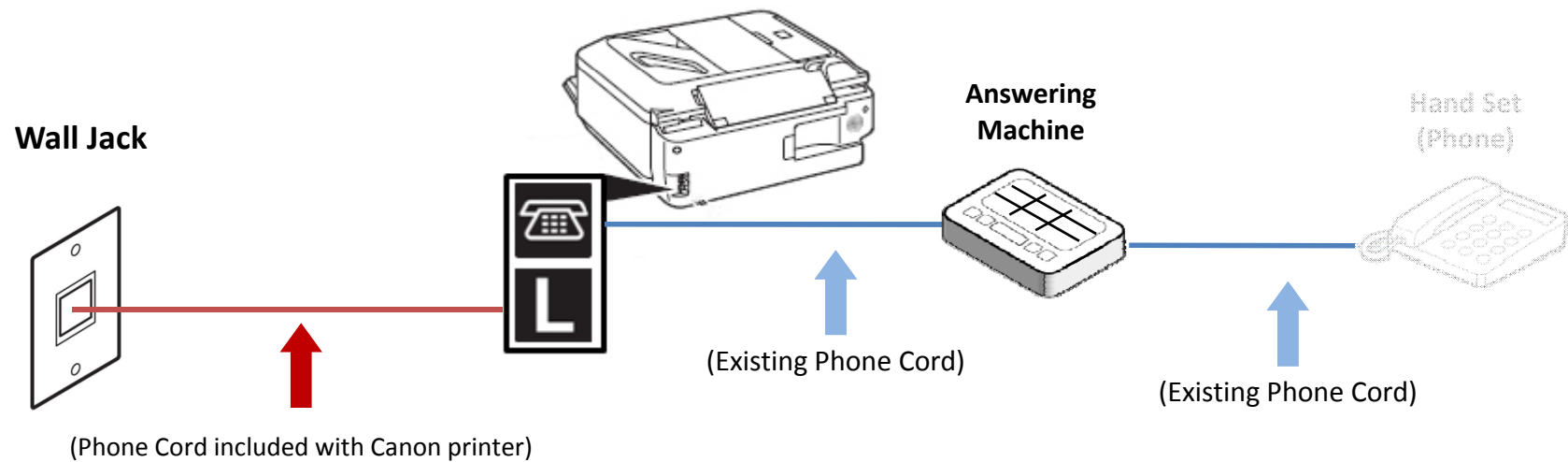
# Fax to Phone Line Connection

- Plug the second phone cord into the answering machine



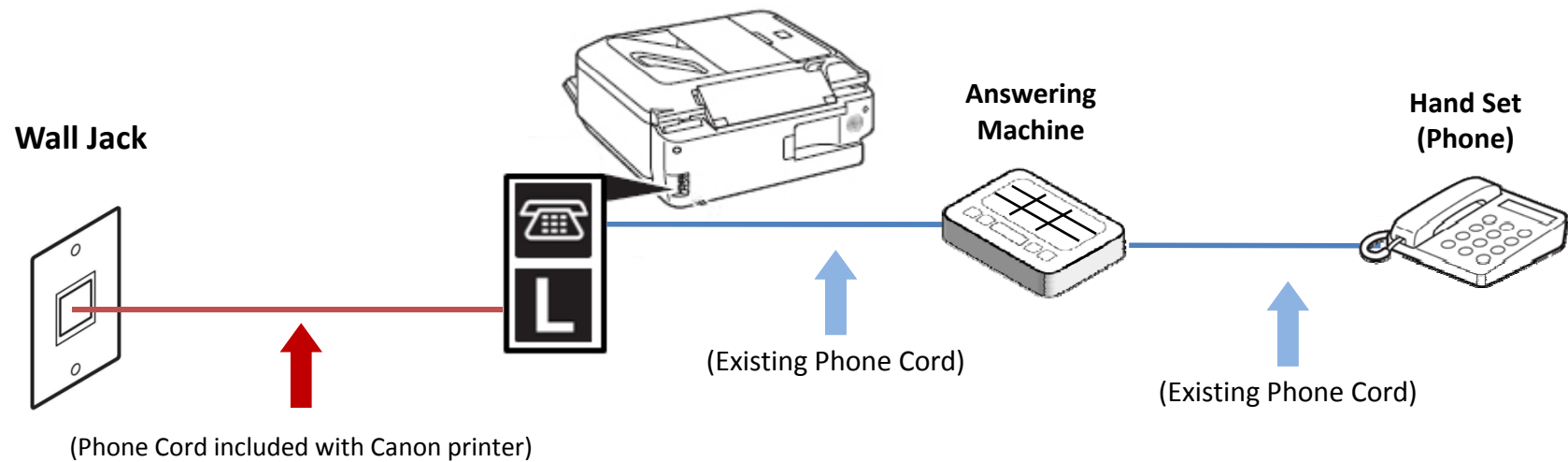
# Fax to Phone Line Connection

- Plug the third phone cord into the answering machine



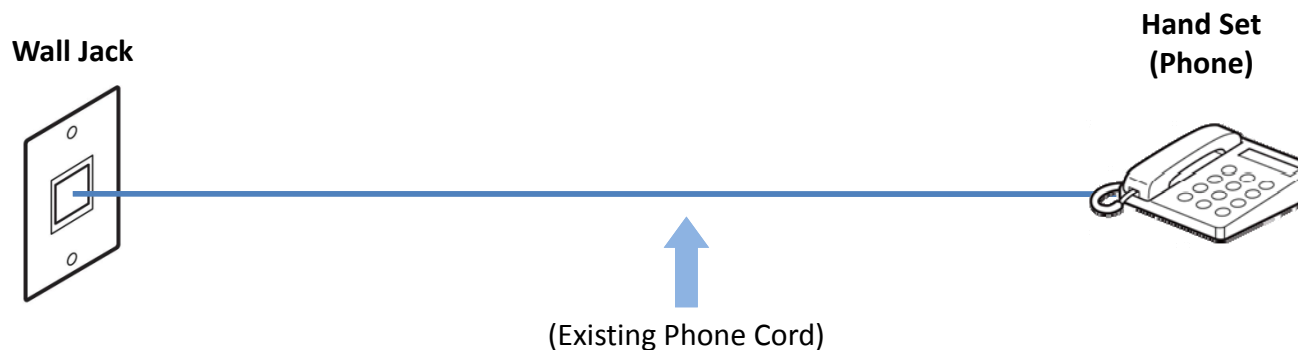
# Fax to Phone Line Connection

- Plug the third phone cord into the phone

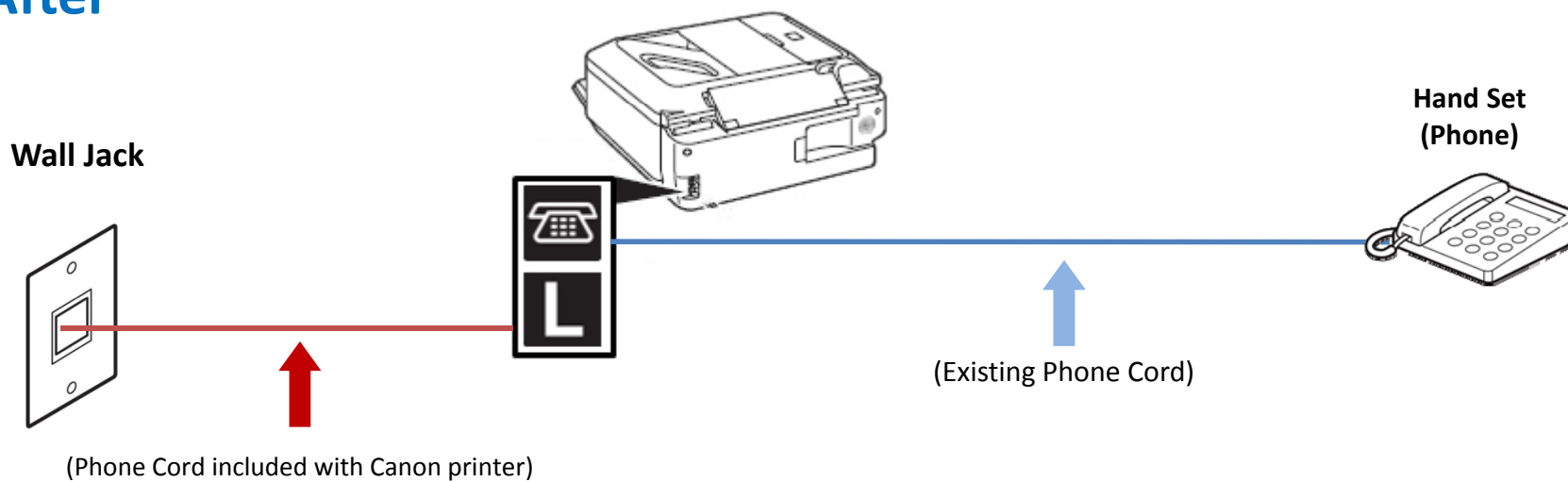


# Fax to Phone Line Connection

**Before**



**After**

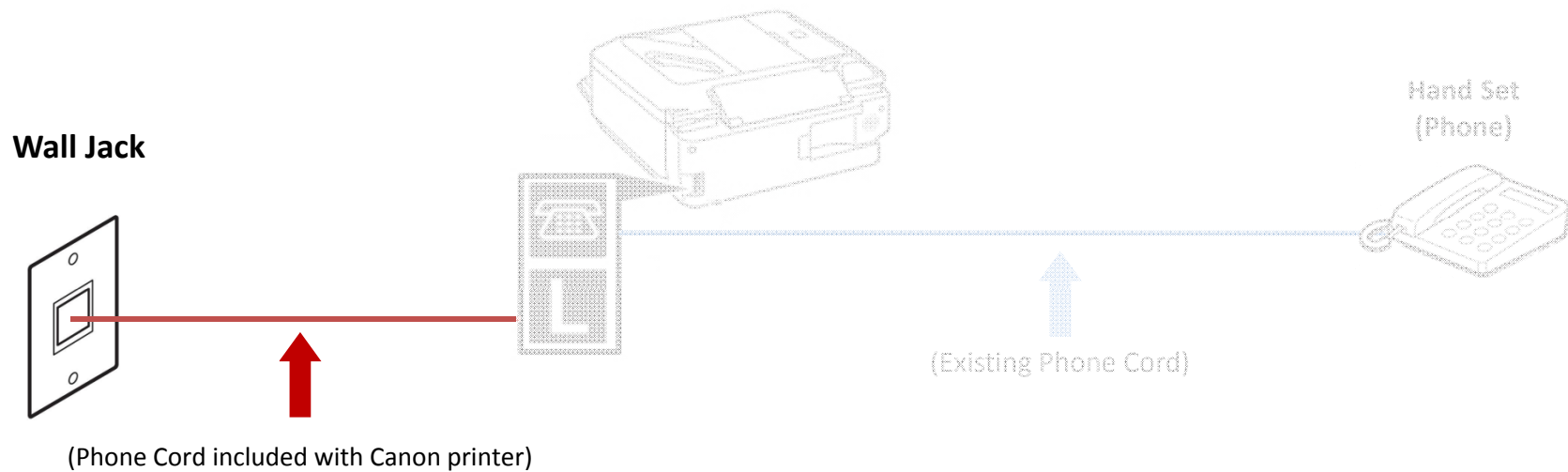


 **Previous**

**Next** 

# Fax to Phone Line Connection

- Plug the provided phone cord into the wall jack



# Fax to Phone Line Connection

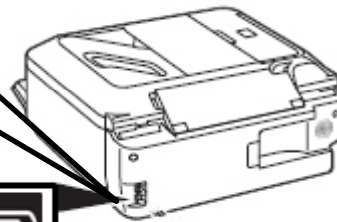
- Plug the provided phone cord into the “L” jack located on the rear of the multifunction



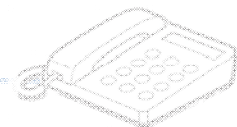
Wall Jack



(Phone Cord included with Canon printer)



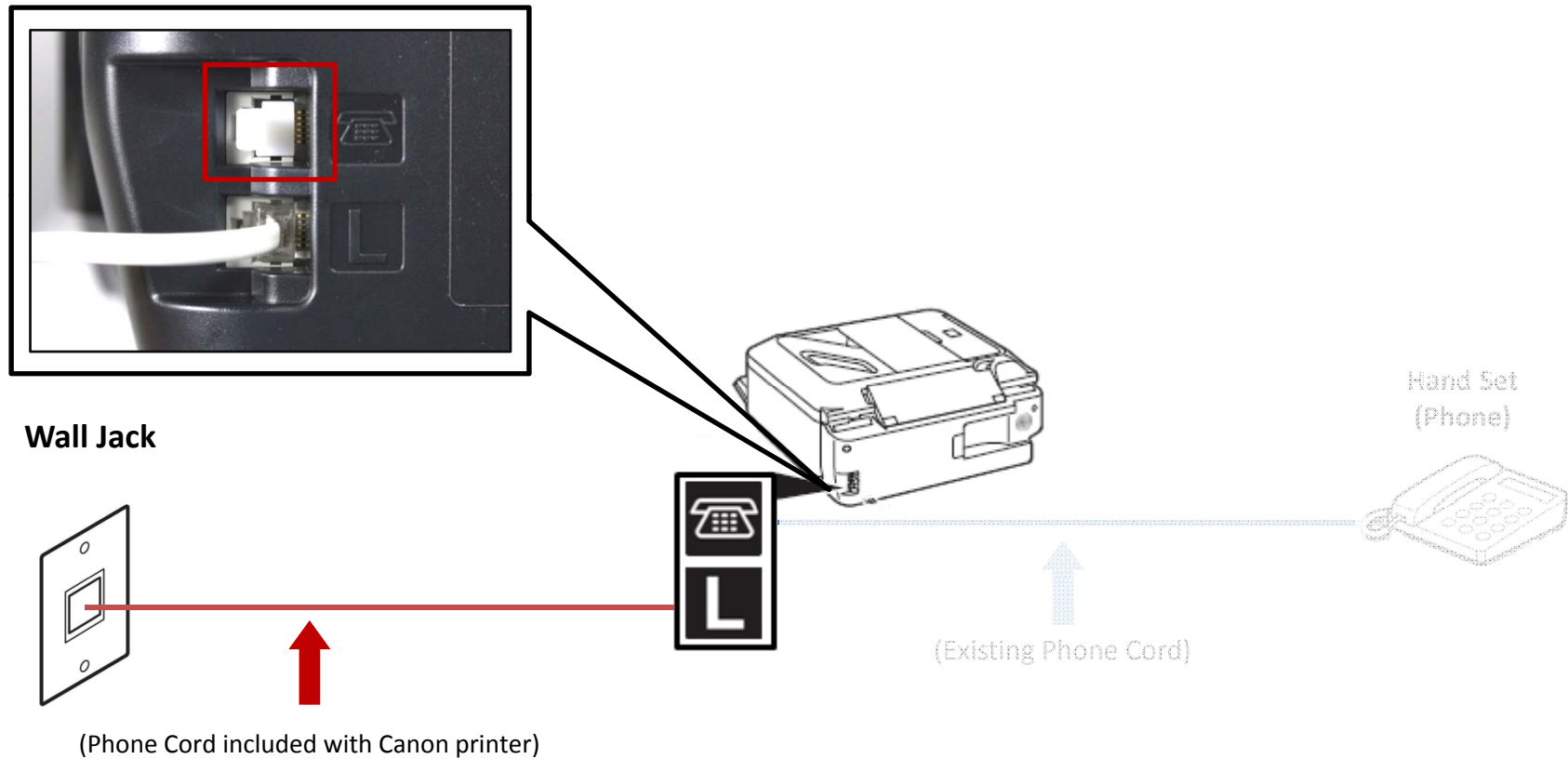
Hand Set  
(Phone)



(Existing Phone Cord)

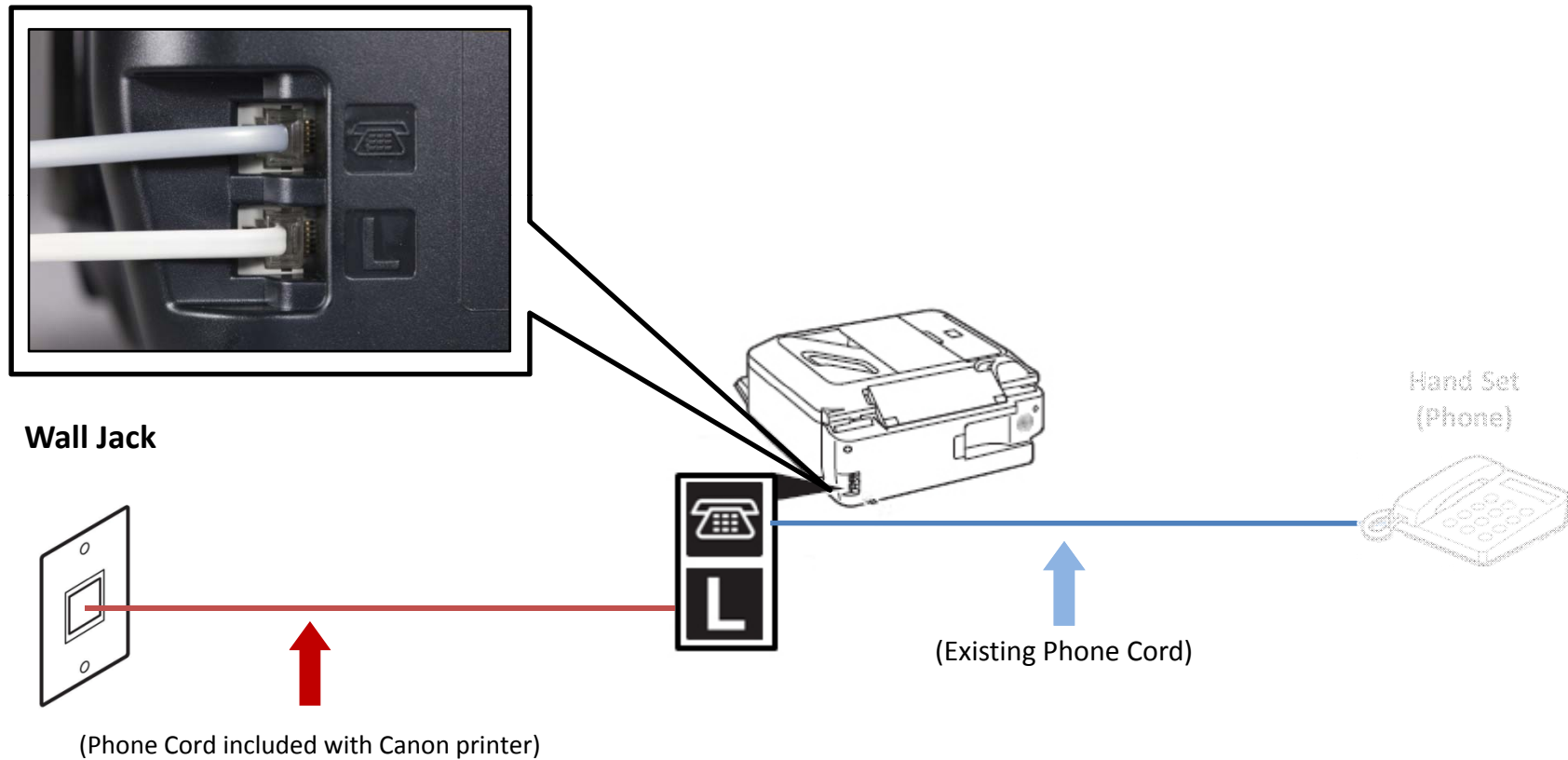
# Fax to Phone Line Connection

- Remove the white plug (D) from the upper jack.



# Fax to Phone Line Connection

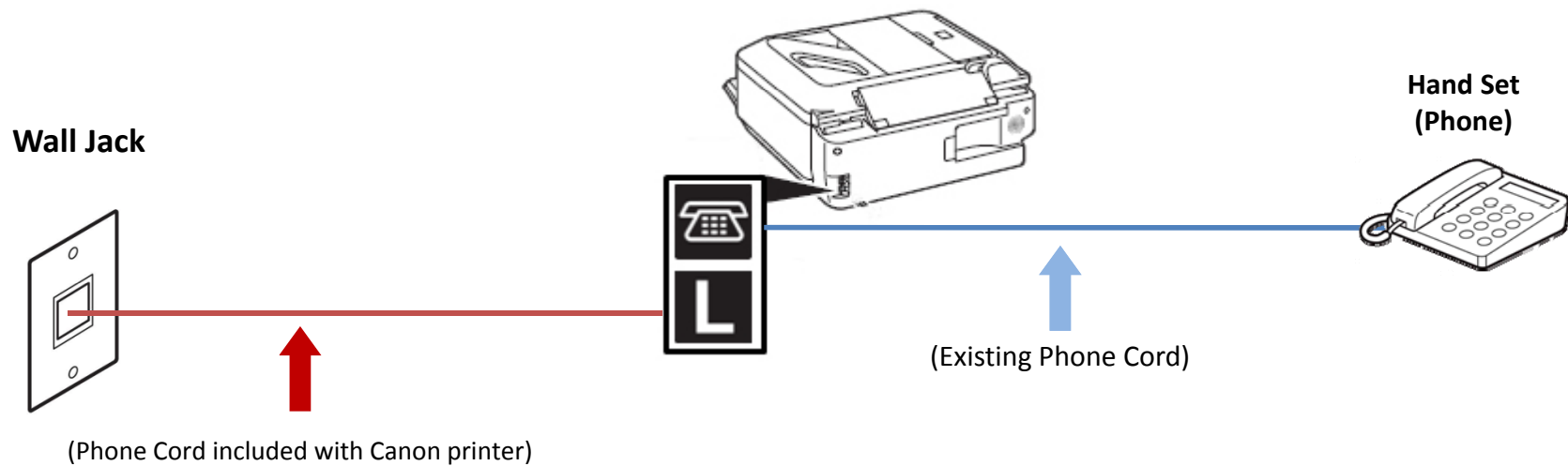
- Plug the second phone cord into the “telephone” jack located on the rear of the multifunction





# Fax to Phone Line Connection

- Plug the second phone cord into the phone





# Setting Up The Receive Mode



[Return To "Connecting Your Phone/Answering Machine"](#)

[Next](#)



## Step 1

Turn on the MX320 by pressing the **ON** button.



## Step 2

Press the **FAX** button.



## Step 3

The fax standby screen will appear.



## Step 4

Press **Menu** button.



## Step 5

The Fax settings menu will appear.



## Step 6

Press the **OK** button.



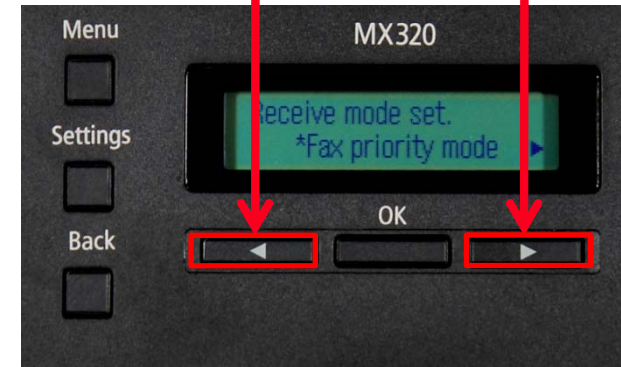
## Step 7

The “Receive mode set.” screen will appear.



## Step 8

Use the **LEFT** or **RIGHT** button to select “TEL priority mode”.



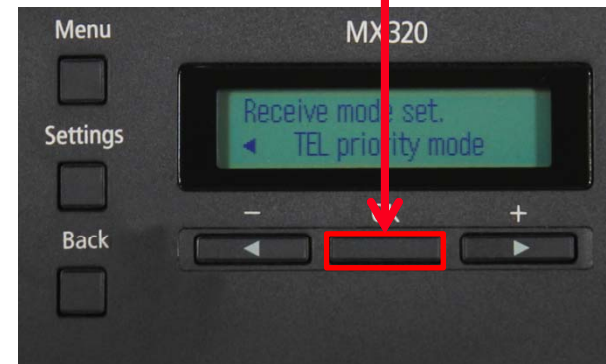
## Step 9

Ensure "TEL priority mode" is selected



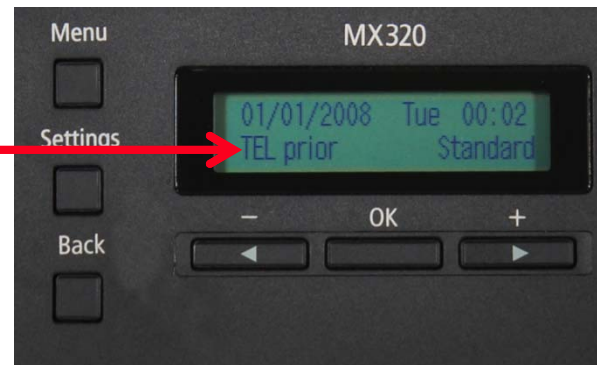
## Step 10

Press the **OK** button



## Step 11

Your MX320 is now set to TEL priority mode. Notice that the mode is listed on the fax standby screen.





# Receiving A Fax

To receive a fax when you are home you will:

- Pick up the handset on the phone connected to the MX320.
- Listen for fax tones.
- When the tones stop hang up the handset.
- The MX320 will receive the fax document.

To receive a fax while you are away:

- The answering machine will answer the call.
- If fax tones are heard by the MX320 it will take over the call and receive the fax document.

**IMPORTANT:** In order to receive a fax, you must either pick up the handset on a phone that is connected to the MX320 or let your answering machine answer the call.

