

Distinctive Ring Pattern Detection (DRPD) Fax Line Setup Guide

Fax Easy Setup

Click [Next](#) to step through this image-friendly version of **Fax Easy Setup**.

If you started **Fax Easy Setup**, on the fax machine's operation panel, and prefer to go through this image-friendly version...

Step 1

Press the FAX button at any screen to go to fax standby mode.



Step 2

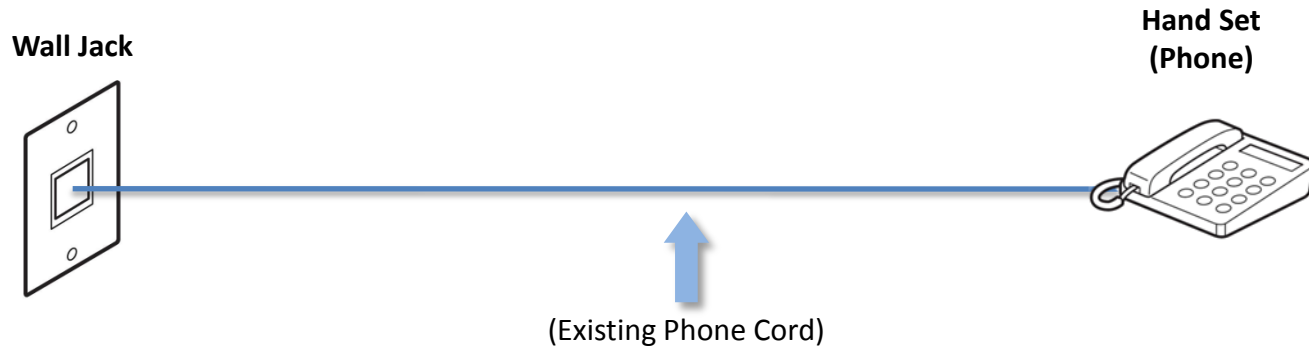
Click [Next](#) to proceed through the setup.



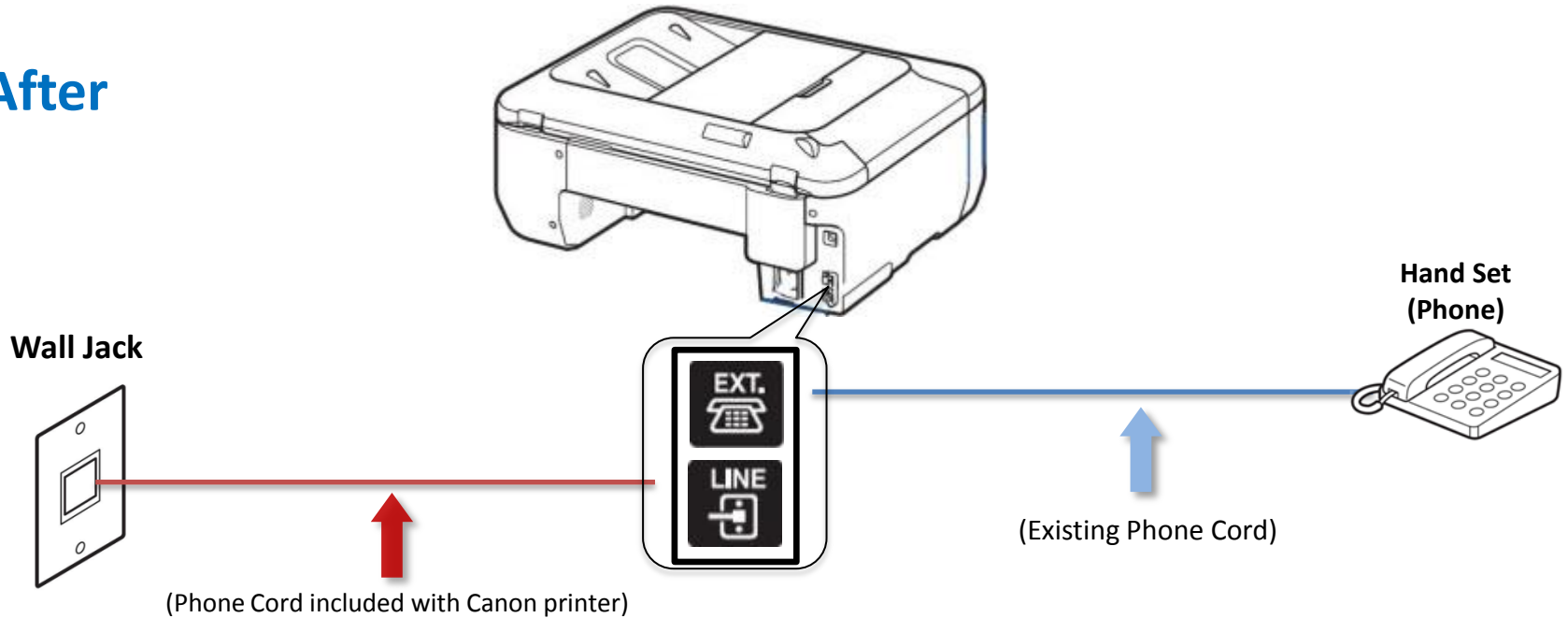
Connecting The Phone Lines

Fax to Phone Line Connection

Before



After

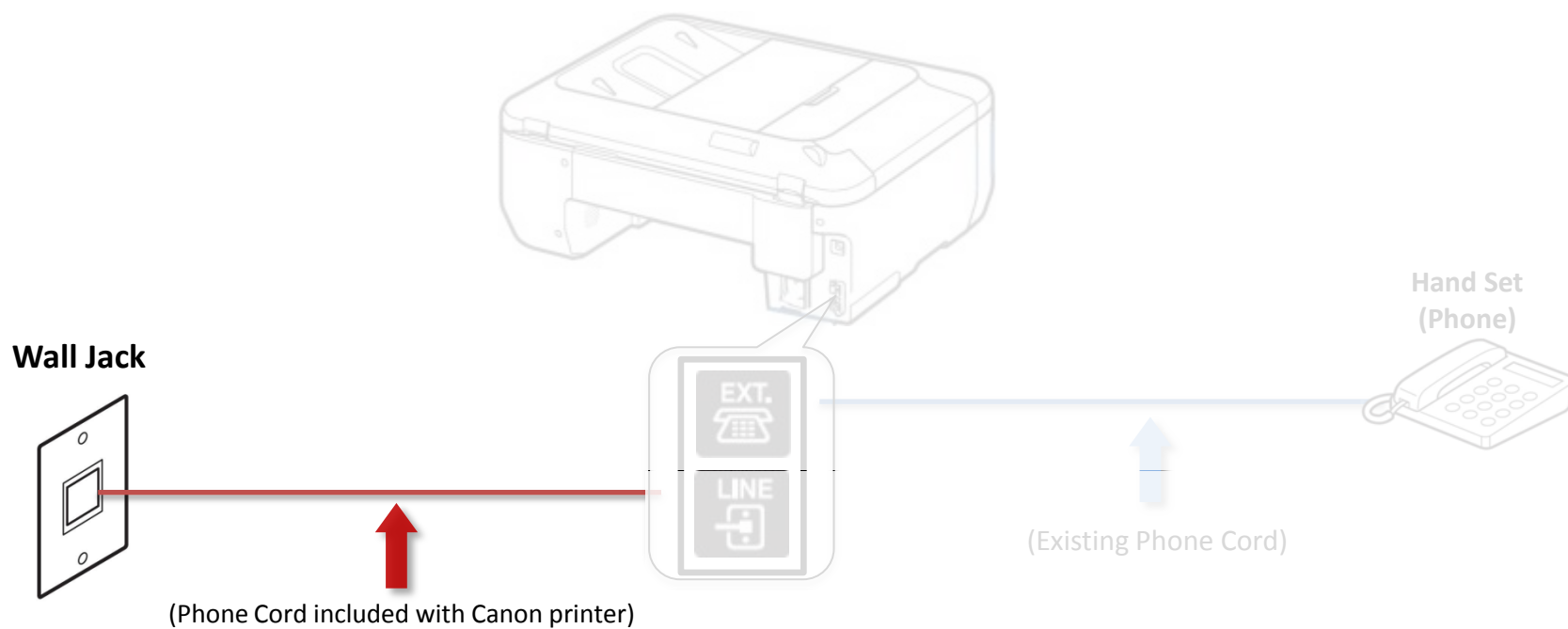


 **Previous**

Next 

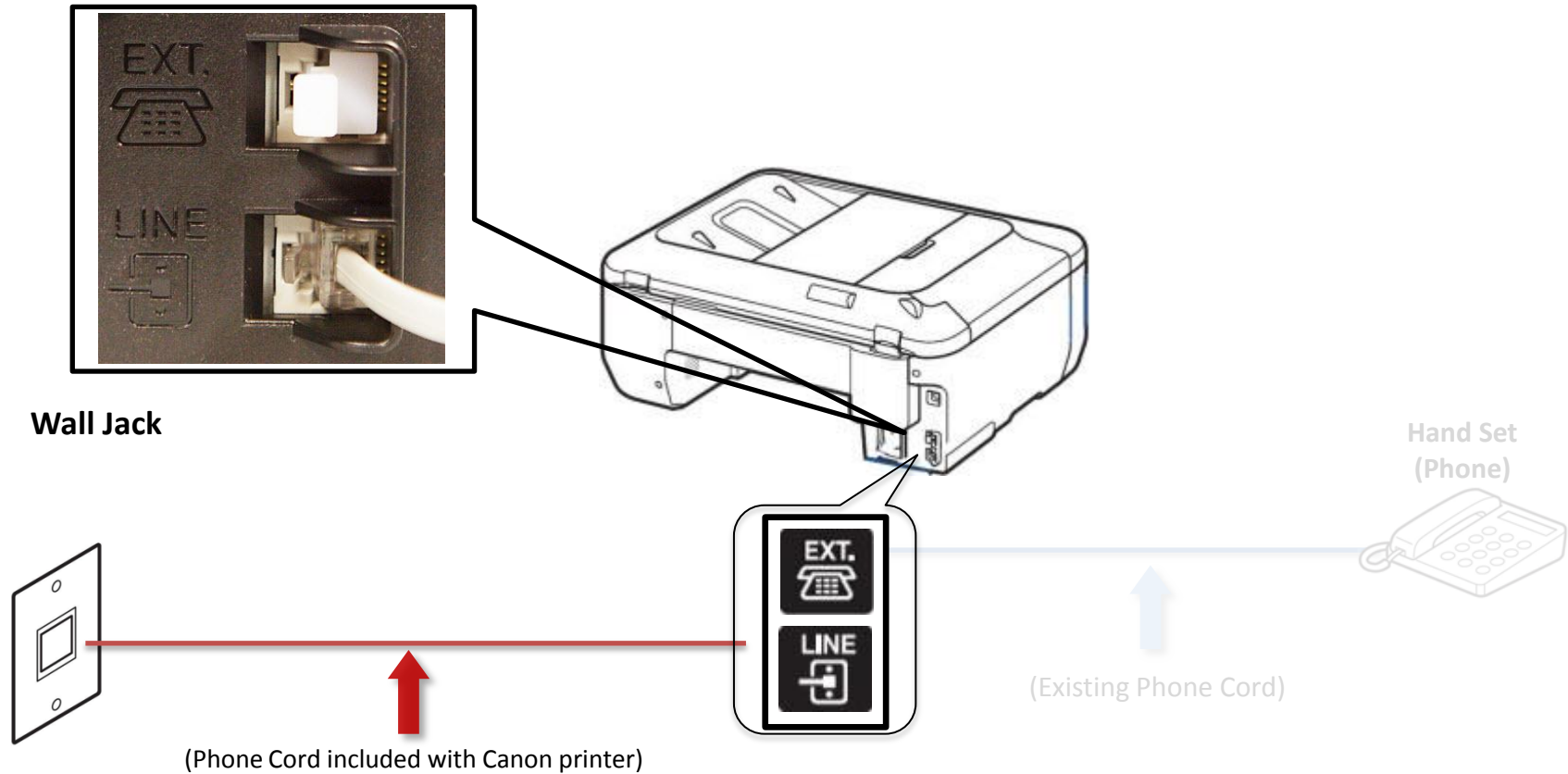
Fax to Phone Line Connection

- Plug the provided phone cord into the wall jack



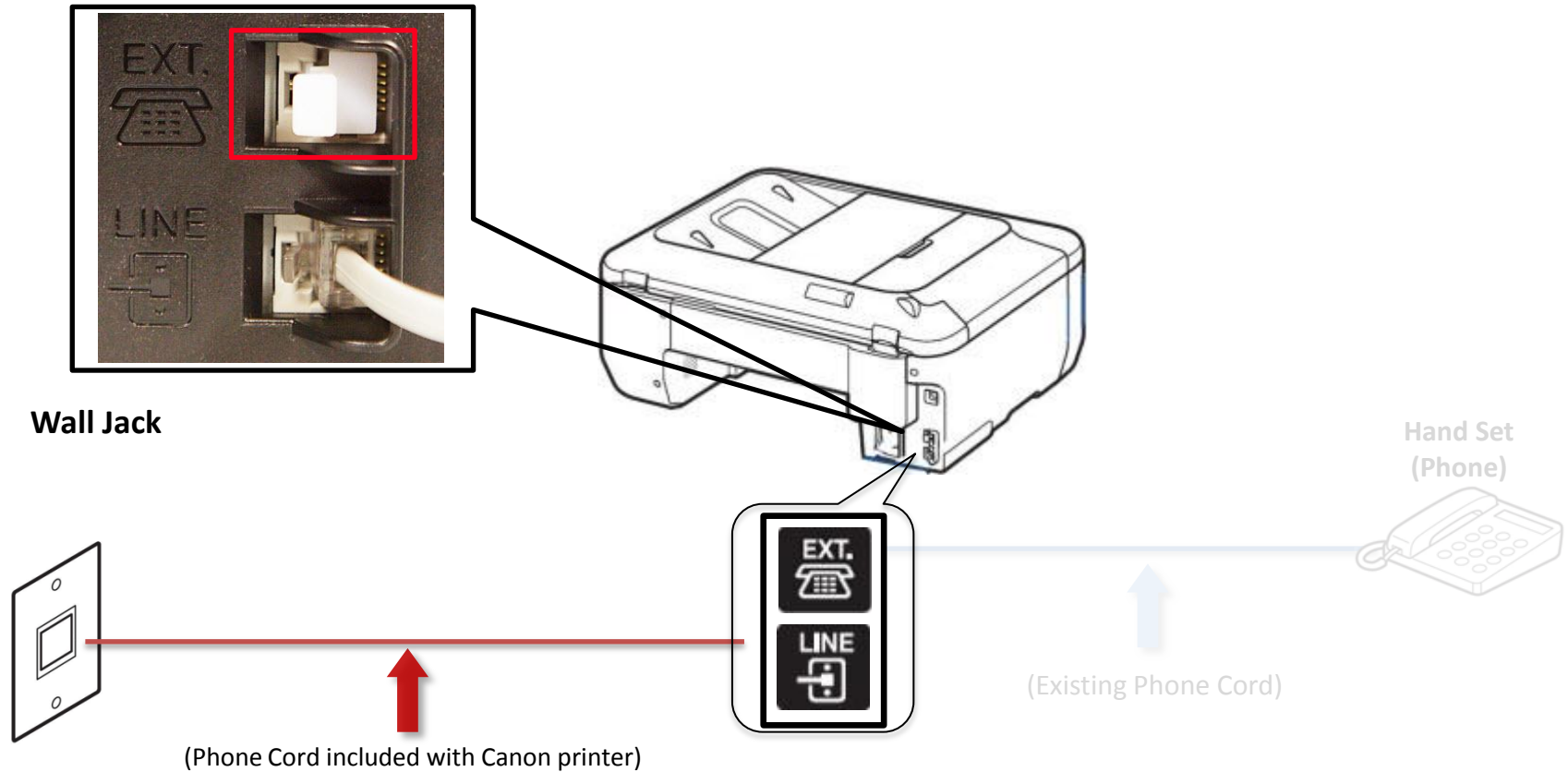
Fax to Phone Line Connection

- Plug the provided phone cord into the “LINE” jack located on the rear of the multifunction



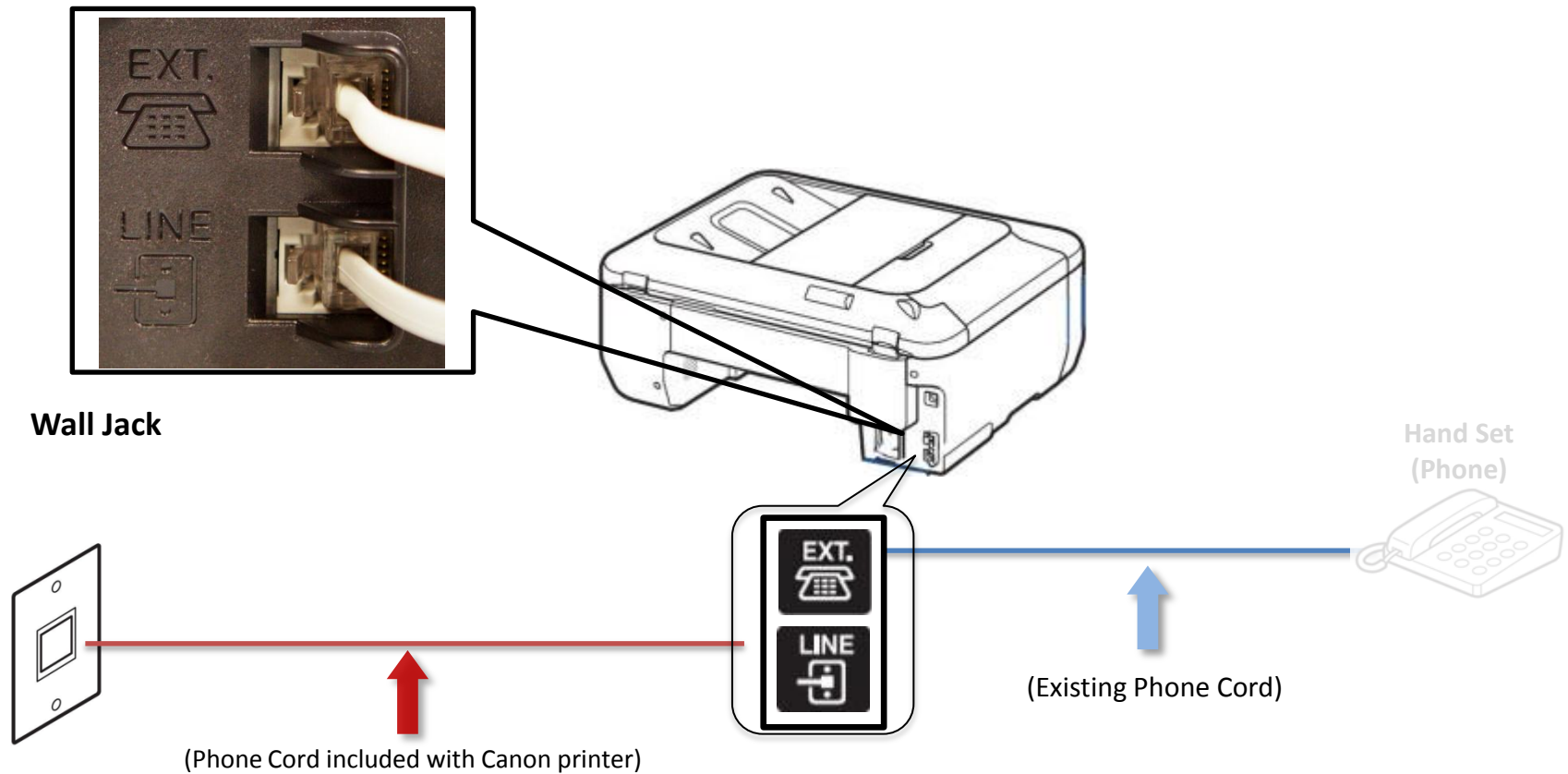
Fax to Phone Line Connection

- Remove the white plug from the upper jack labeled "EXT."



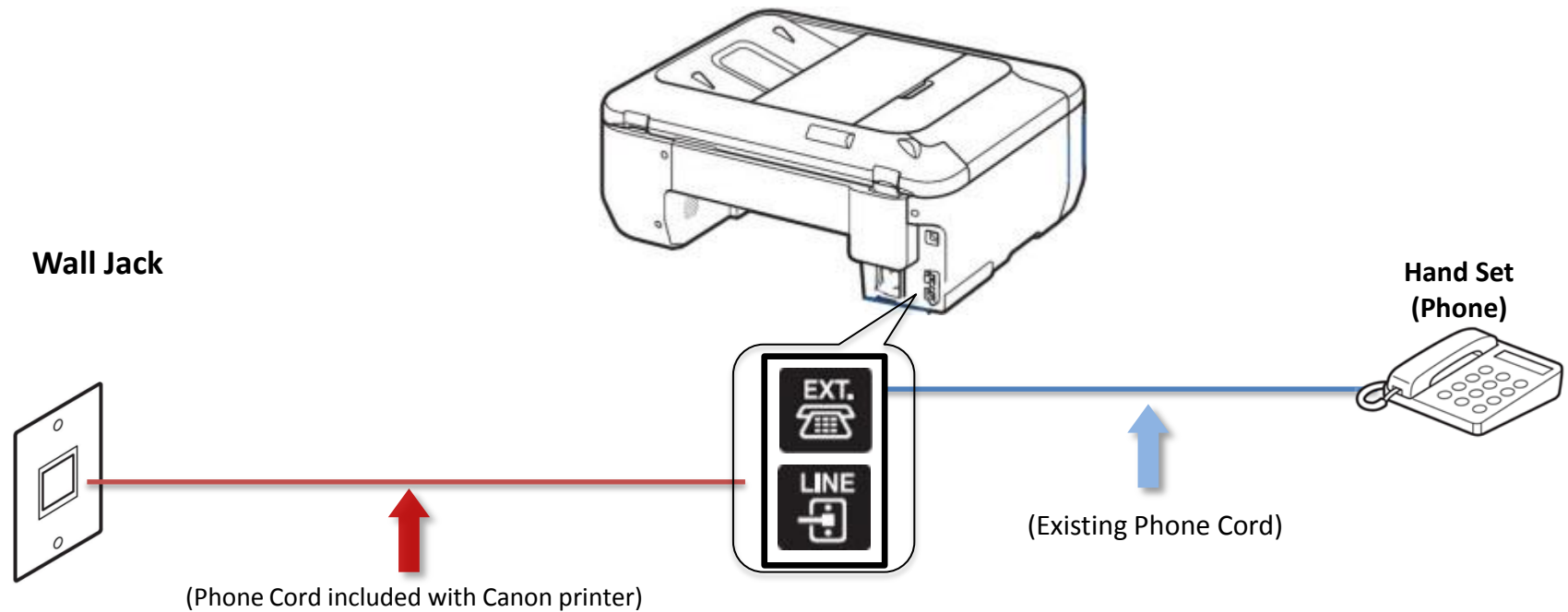
Fax to Phone Line Connection

- Plug the second phone cord into the “EXT.” jack located on the rear of the multifunction



Fax to Phone Line Connection

- Plug the second phone cord into the phone



Setting Up The Receive Mode

Step 1

Turn on the MX432 by pressing the **ON** button.



Step 2

Press the **FAX** button.



Step 3

The fax standby screen will appear.



Step 4

Press the **Menu** button.



Step 5

The **FAX menu** screen will appear.



Step 6

Use the **LEFT** or **RIGHT** button to select "Receive mode set".



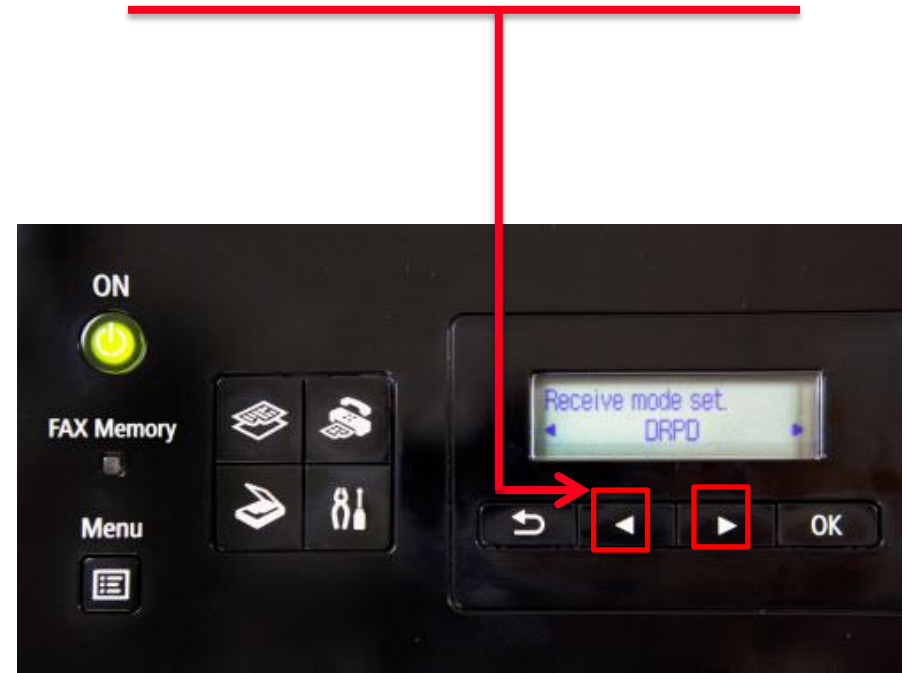
Step 7

Press the **OK** button.



Step 8

Use the **LEFT** or **RIGHT** button to select "DRPD".



Step 9

Press the **OK** button.



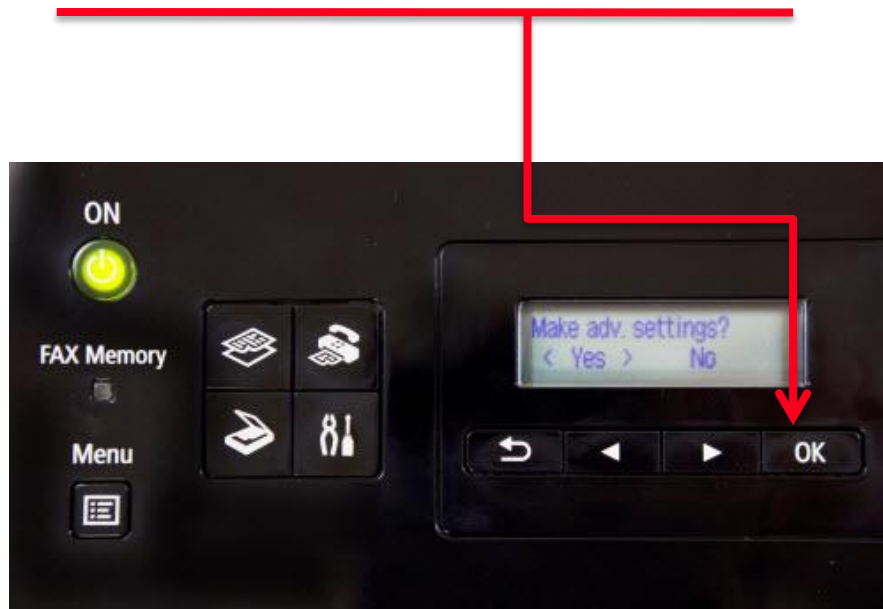
Step 10

Use the **LEFT** or **RIGHT** button to select "Yes" at **Make adv. settings** screen.



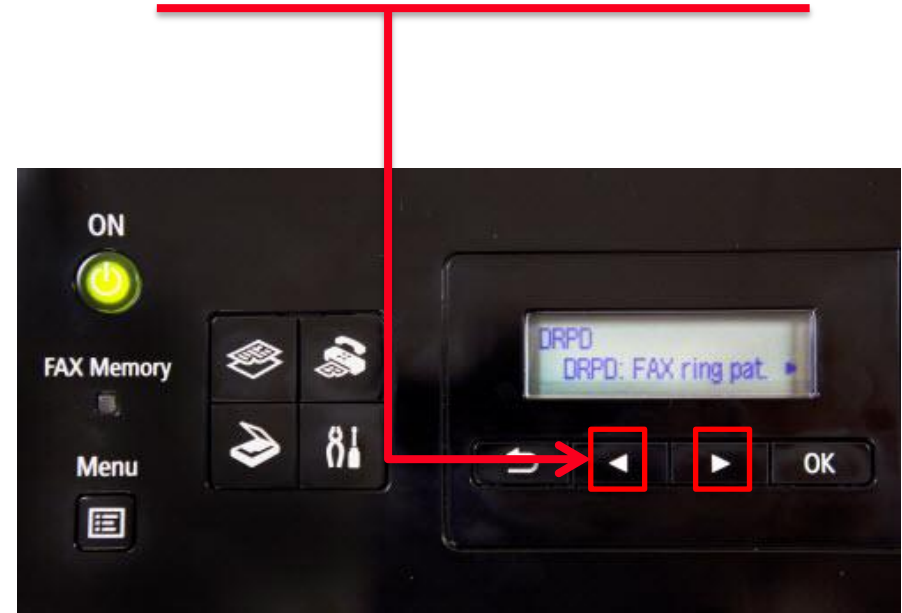
Step 11

Press the **OK** button.



Step 12

Use the **LEFT** or **RIGHT** button to select "DRPD: FAX ring pat."



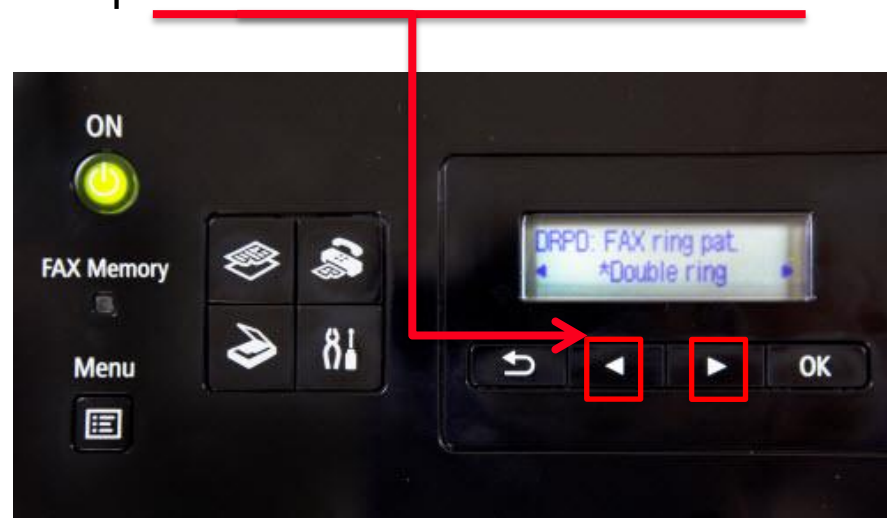
Step 13

Press the **OK** button.



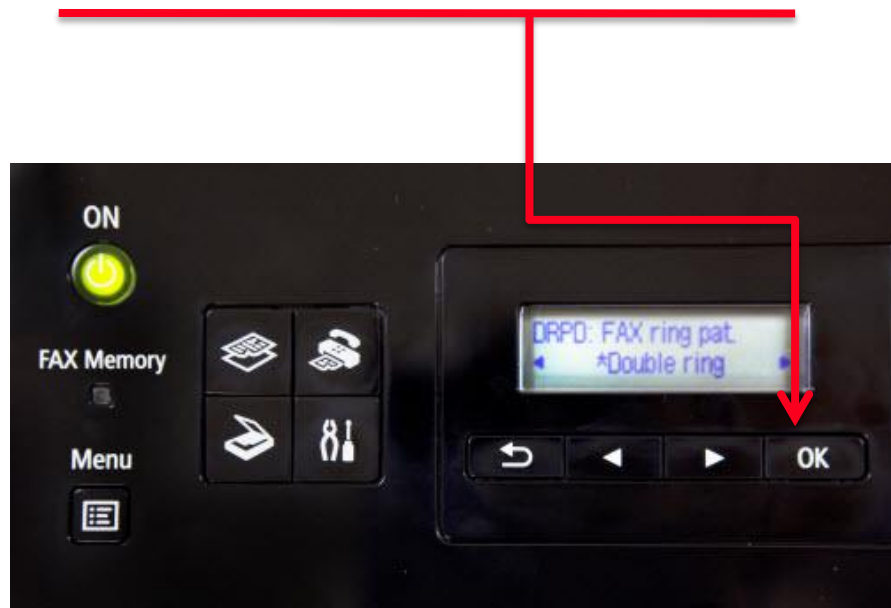
Step 14

Use the **LEFT** or **RIGHT** button to select the ring pattern assigned to your fax number. Your phone service provider assigns this pattern.



Step 15

Press the **OK** button.



Step 16

Press the **FAX** button to return to standby mode.



Step 17

Fax mode and the ink level status will flash across the screen.



Step 18

You will return to the “Fax standby screen” and the receive mode will appear on the screen.



Note: The above screen shows **TEL priority** as the receive mode.

Receiving A Fax

When a person dials your DRPD number the MX432 will recognize the distinctive ring pattern and will answer the call.

It will begin receiving the fax automatically.

You do not need to be home or interact with the MX432 in order to receive a fax.

