



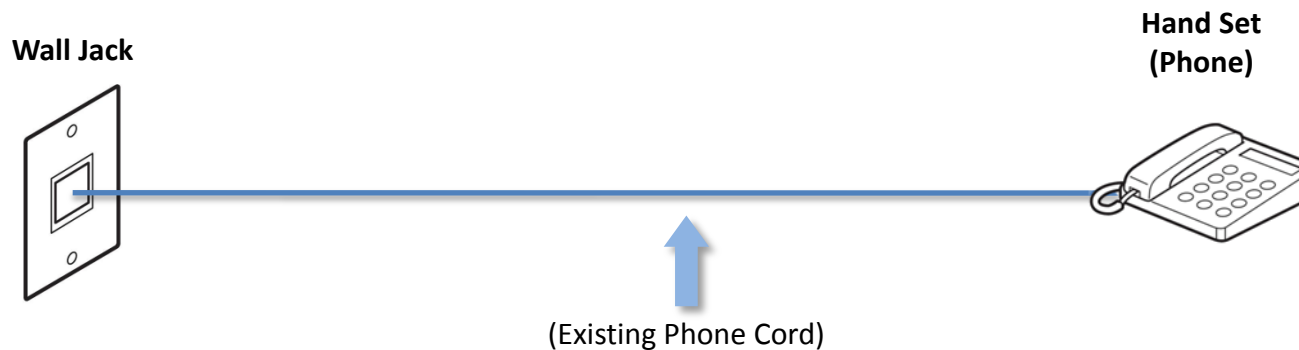
Distinctive Ring Pattern Detection (DRPD) Fax Line Setup Guide

MX350

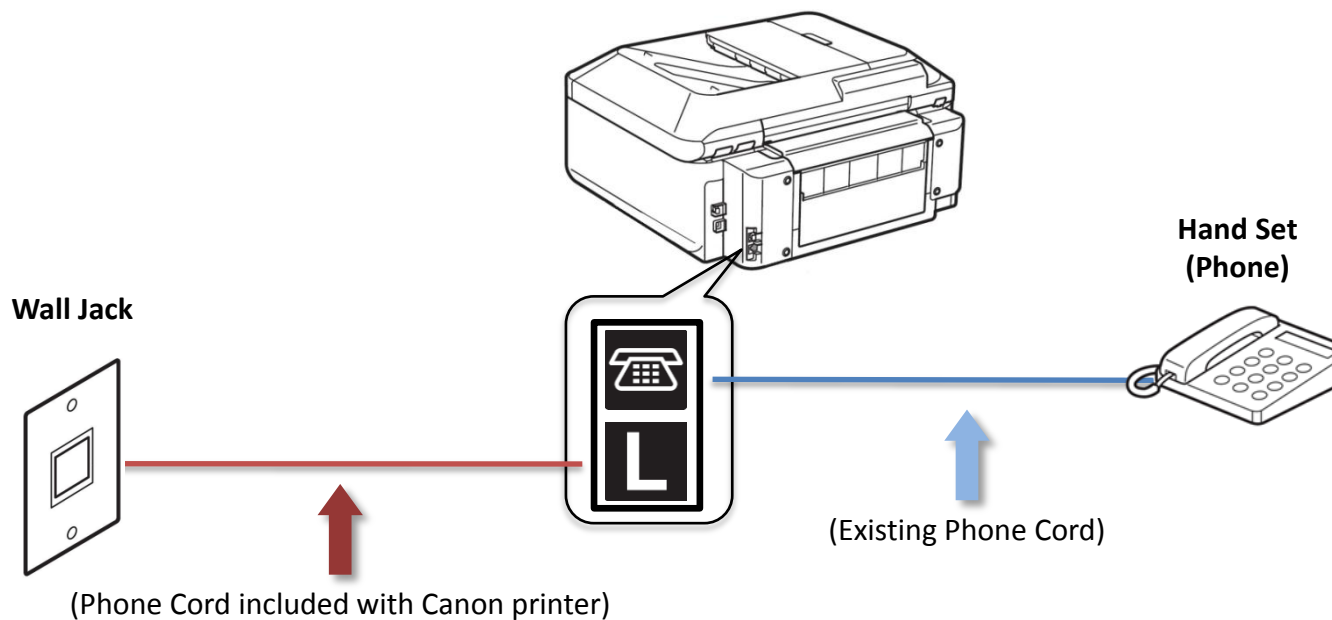
Connecting The Phone Lines

Fax to Phone Line Connection

Before

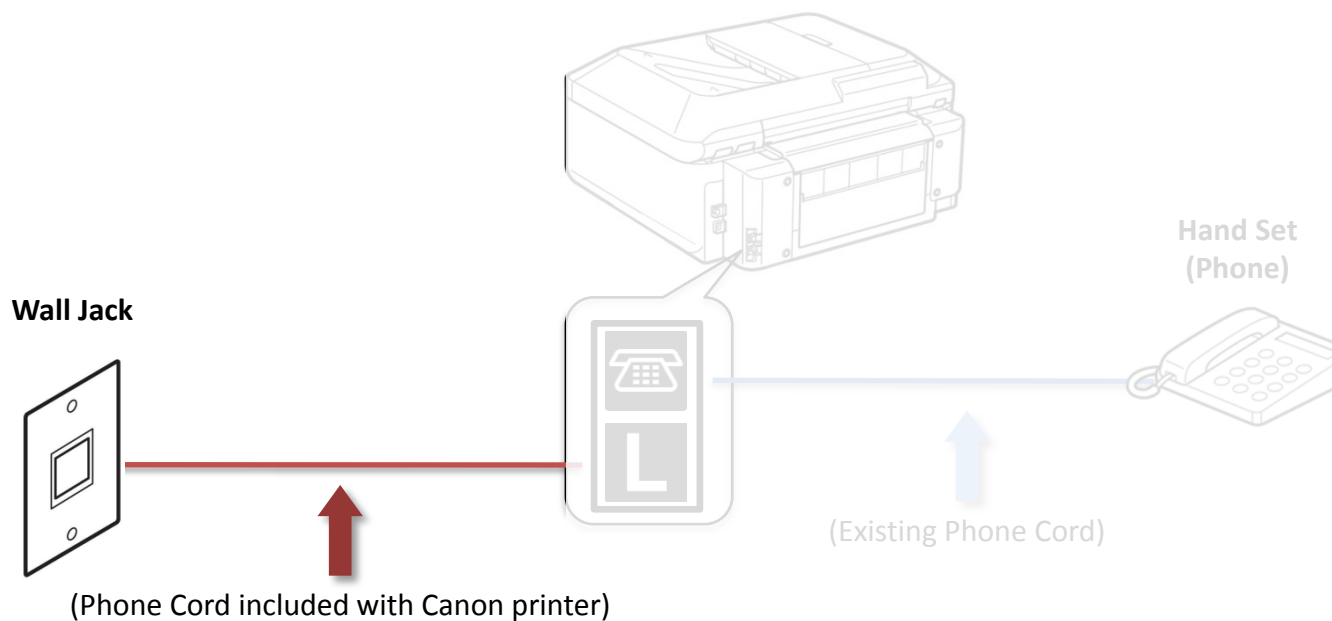


After



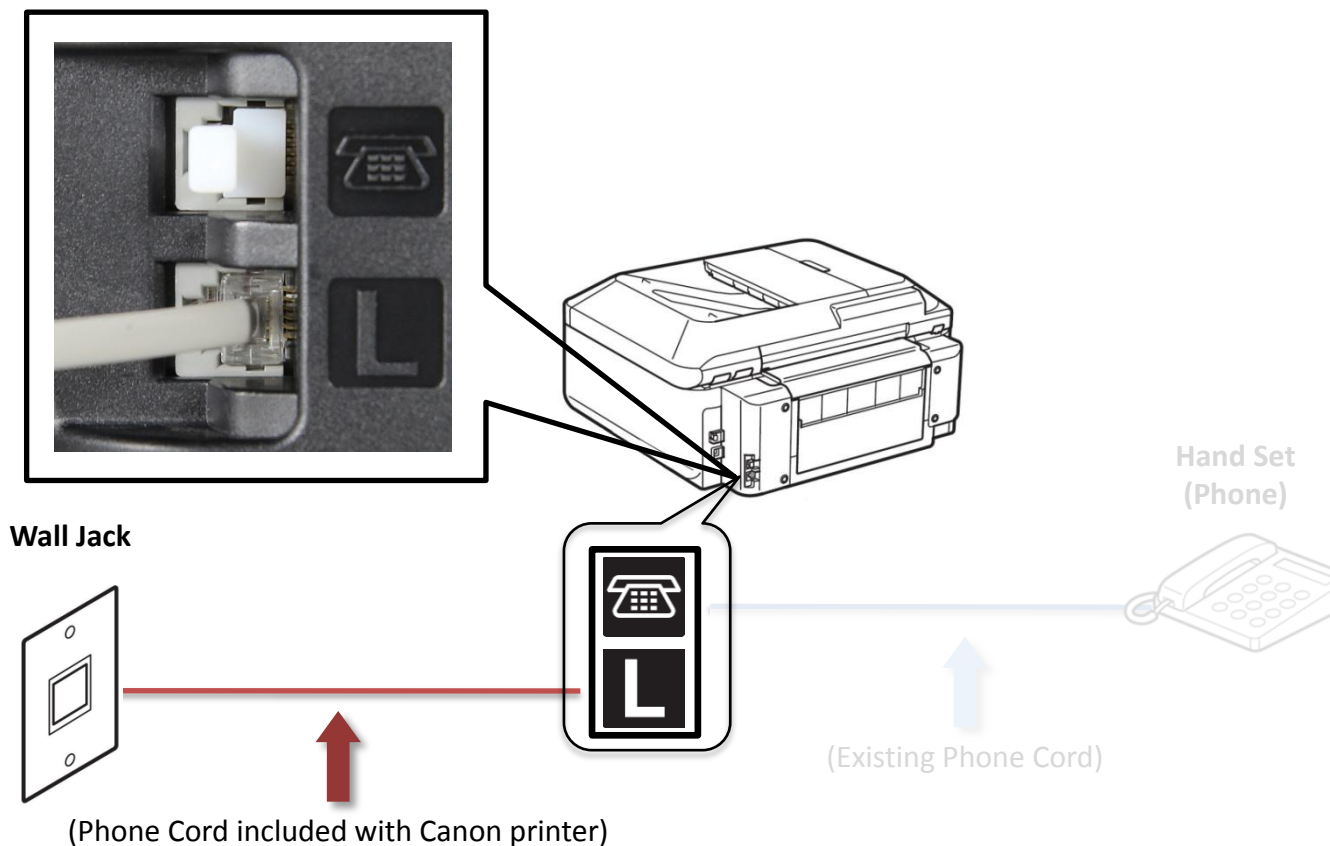
Fax to Phone Line Connection

- Plug the phone cord into the wall jack



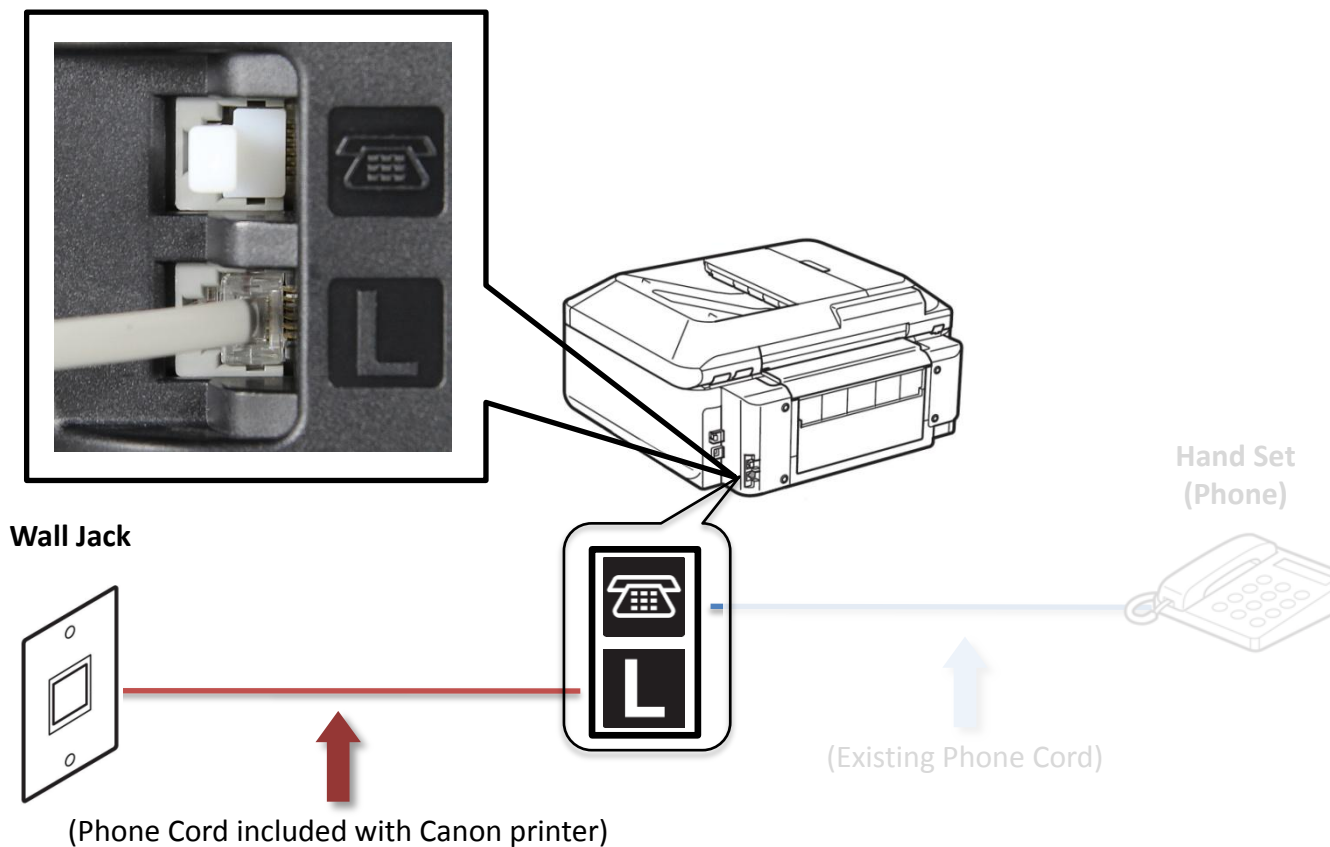
Fax to Phone Line Connection

- Plug the provided phone cord into the “L” jack in the rear of the multifunction



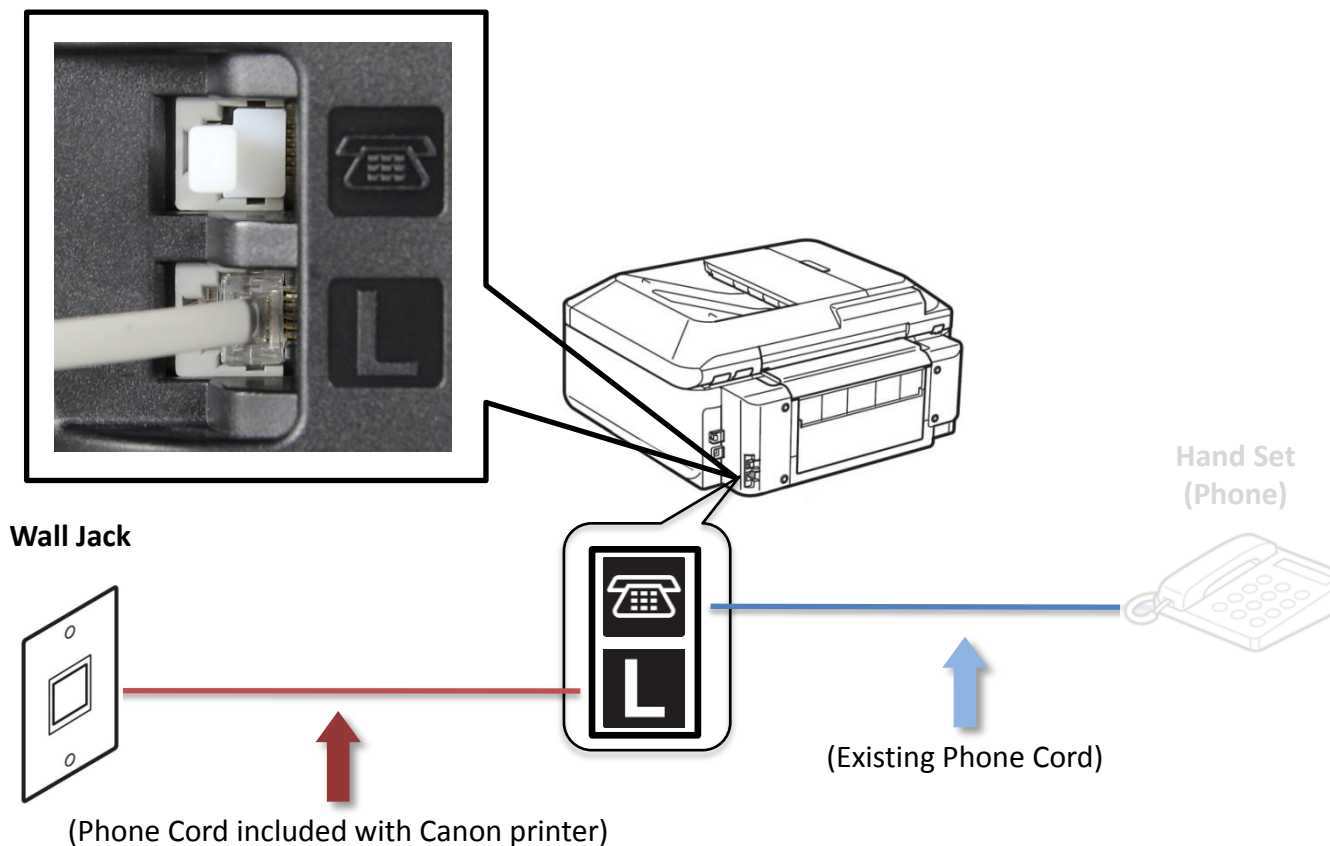
Fax to Phone Line Connection

- Remove the white plug from the upper jack.



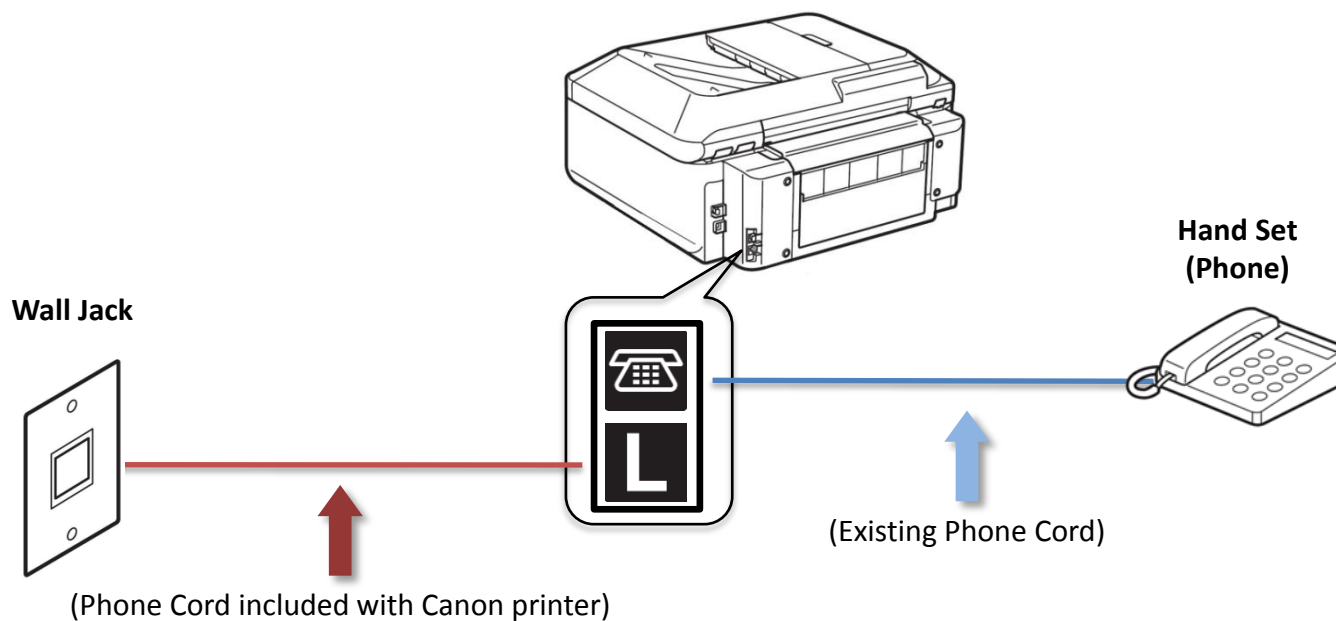
Fax to Phone Line Connection

- Plug the second phone cord into the jack marked with an image of a “telephone” located on the rear of the multifunction.



Fax to Phone Line Connection

- Plug the second phone cord into the phone



Setting Up The Receive Mode

Step 1

Turn on the MX350 by pressing the **ON** button.



Step 2

Press the **FAX** button.



Step 3

The fax standby screen will appear.



Step 4

Press the center **FUNCTION** button.



Step 5

The Receive mode settings screen will appear.



Step 6

Use the **UP** or **DOWN** button to select "DRPD".



Step 7

Ensure that “DRPD” is highlighted.



Step 8

Press the **OK** button.



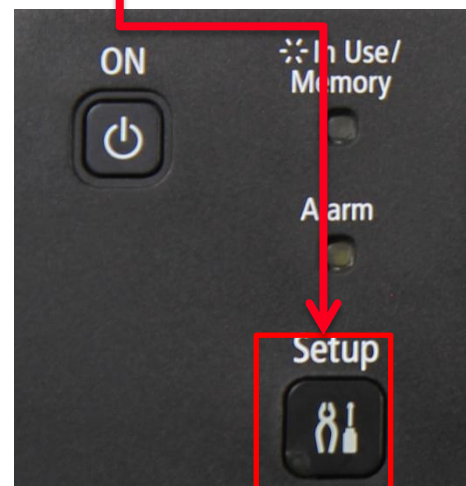
Step 9

Your MX350 will return to the fax standby screen. You now need to set the ring pattern for fax calls.



Step 10

Press the **Setup** button.



Step 11

The green LED on the Setup button will glow when the Setup button has been pressed.



Step 12

Use the **Left** or **Right** button to select "Device Settings".



Step 13

Ensure “Device settings” is selected



Step 14

Press the **OK** button.



Step 15

The “Device settings” screen will appear. Use the **Up** or **Down** button to select “FAX settings”.



Step 16

Press the **OK** button.



Step 17

The “FAX settings” screen will appear. Use the **Up** or **Down** button to select “Reception settings”.



Step 18

Press the **OK** button.



Step 19

The “Reception settings” screen will appear. Use the **Up** or **Down** button to select “DRPD: FAX ring pattern”.



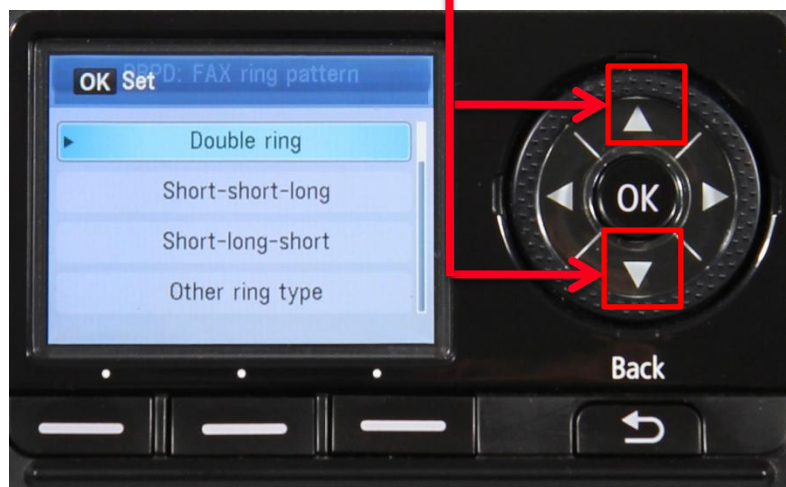
Step 20

Press the **OK** button.



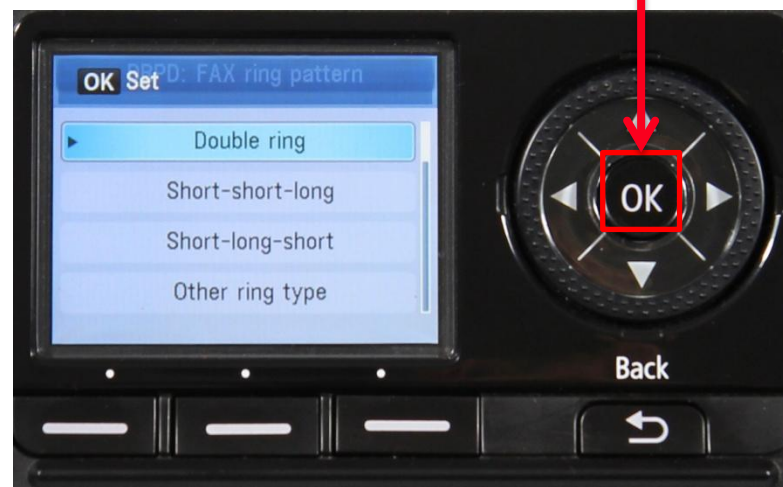
Step 21

The “DRPD: FAX ring pattern” screen will appear. Use the **UP** or **DOWN** button to select the ring pattern assigned to your fax number. Your phone service provider assigns this pattern.



Step 22

Press the **OK** button.



Step 23

A confirmation screen will appear briefly. The “DRPD: FAX ring pattern” screen will reappear.



Step 24

Press the **Fax** button.



Step 19

The screen will return to the FAX standby screen and DRPD will be the selected mode. Your MX350 is now set to DRPD mode.



Receiving A Fax

When a person dials your DRPD number the MX350 will recognize the distinctive ring pattern and will answer the call.

It will begin receiving the fax automatically.

You do not need to be home or interact with the MX350 in order to receive a fax.

