



imagePROGRAF

Media Configuration Tool Guide

For Macintosh

Contents

Before You Begin	ii
■ Compatible Printers	ii
■ Drivers Applicable with Media Configuration Tool	ii
How to Use This Guide	ii
■ Conventions.....	ii
■ Button Notations.....	ii
■ Trademarks	ii
■ Request to Our Customers.....	iii
Chapter 1 Installing and Starting the Media Configuration Tool.....	1-1
Operating Environment.....	1-1
Installation Procedures	1-1
Procedures for Uninstalling.....	1-3
Starting the Media Configuration Tool	1-5
Chapter 2 Functions of the Media Configuration Tool.....	2-1
The Functions of the Media Configuration Tool.....	2-1
■ Replacing all of the printer and printer driver media information at once	2-1
■ Adding user defined media types to the printer and printer driver media menus	2-1
■ Detailed Settings of Media Properties	2-2
■ Customizing the printer and printer driver media type menu	2-2
Outline of the Media Configuration Tool Functions.....	2-2
■ The Media Configuration Tool Main Screen	2-2
■ Wizard Screen Content	2-4
Chapter 3 Updating Media Information File	3-1
Select the Media Information File	3-1
Select Printer to Update.....	3-3
Check What Is to be Updated.....	3-4
Chapter 4 Adding Media Types.....	4-1
Select Printer to be Added.....	4-1
Input Media Name	4-3
Input Media Properties.....	4-4
Check Addition.....	4-9
Chapter 5 Editing Media Types.....	5-1
Select Printer to be Edited	5-1
Edit Media Type.....	5-2
Index	Index-1



Before You Begin

imagePROGRAF Media Configuration Tool (known below as the Media Configuration Tool) is software to store media information when media (media types) supported by the printer have been added. It offers functions for users familiar with media and printers.

This document contains an outline and information on settings for the Media Configuration Tool version used in Macintosh.

This document also explains how to use Media Configuration Tool in Mac OS. Refer to “imagePROGRAF Media Configuration Tool Guide For Windows”, for information on how to use Media Configuration Tool in a Windows environment.

The printer types and range represented for this driver are as follows.

■ Compatible Printers

Canon Large Format Printer W6400

Canon Large Format Printer W8400

■ Drivers Applicable with Media Configuration Tool

Canon imagePROGRAF Printer Driver 2005 (Mac OS 8.6/9.x/X 10.2 or Later)

imagePROGRAF Print Plug-In for Photoshop (Mac OS 8.6/9.x/X 10.2 or Later)

How to Use This Guide

■ Conventions

The following marks are used to alert you about safety, handling precautions and limitations, cautions, and other important information.



Important

Describes important points and limitations you should follow during operation. Read and obey this information to avoid problems caused by incorrect procedures.



Note

Provides helpful hints and tips for reference during operation. We recommend that you read and obey this information.

■ Button Notations

The following names are used for buttons in this guide.

- Buttons on the computer screen appear in **bold** text.

Example: Click **OK**.

Click the **Set** button.

■ Trademarks

Canon, the Canon logo, and imagePROGRAF are trademarks or registered trademarks of CANON INC.

Apple, Macintosh and Mac OS are registered trademarks or trademarks of Apple Computer, Inc.

Microsoft® and Windows® are registered trademarks of the Microsoft Corporation in United States and other countries.

Any other company name and product name are company trademarks or registered trademarks.



■ **Request to Our Customers**

- Unauthorized transfer or duplication of all or any part of this document is prohibited.
- The content of this document is subject to change without notice.
- Every effort has been made to ensure that the information contained in this guide is correct. If any error or omission is found, contact us directly or an authorized Canon representative.
- Canon is not responsible for any damages, direct or indirect, arising from or related to the use of this software.

Copyright© 2005 CANON INC. ALL RIGHTS RESERVED.



Chapter 1 Installing and Starting the Media Configuration Tool

The explanation below is on the operating environment and installation procedures for the Media Configuration Tool.

Operating Environment

You can use the Media Configuration Tool in the following environments.

Compatible Operating System	<ul style="list-style-type: none"> • Mac OS 8.6/9.x • Mac OS X (10.2 or later)
Software that requires installation	<ul style="list-style-type: none"> • Canon imagePROGRAF Printer Driver 2005 (known below as imagePROGRAF Printer Driver) • GARO Printmonitor



GARO Printmonitor is stored on the User Software CD-ROM and is installed automatically together with the imagePROGRAF Printer Driver.

Installation Procedures

Start the User Software CD-ROM included with the printer, and follow procedures below to install the Media Configuration Tool.



Install the imagePROGRAF Printer Driver before installing the Media Configuration Tool.

1. Insert the User Software CD-ROM in the CD-ROM drive.
2. Open the **GARO Installer for X** icon in the User Software CD-ROM.



GARO Installer for X



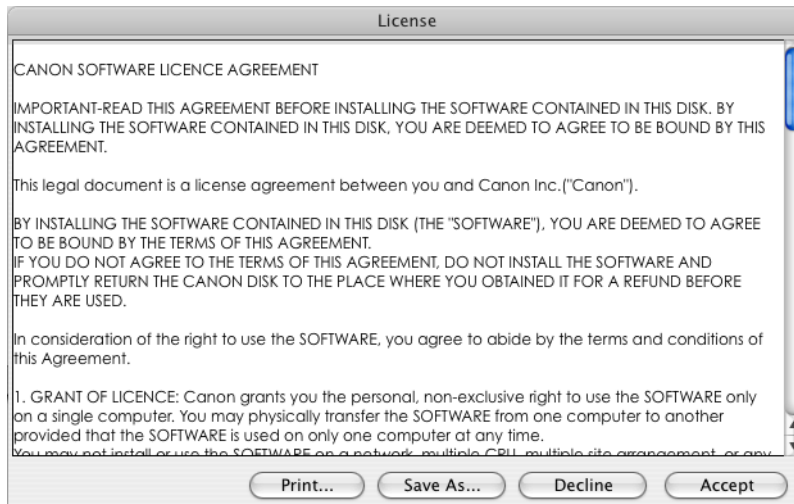
The "X" icon is the OS version you are using. Select the icon of the relevant version.

3. With the Mac OS X input the administrator name and password, and click **OK**.

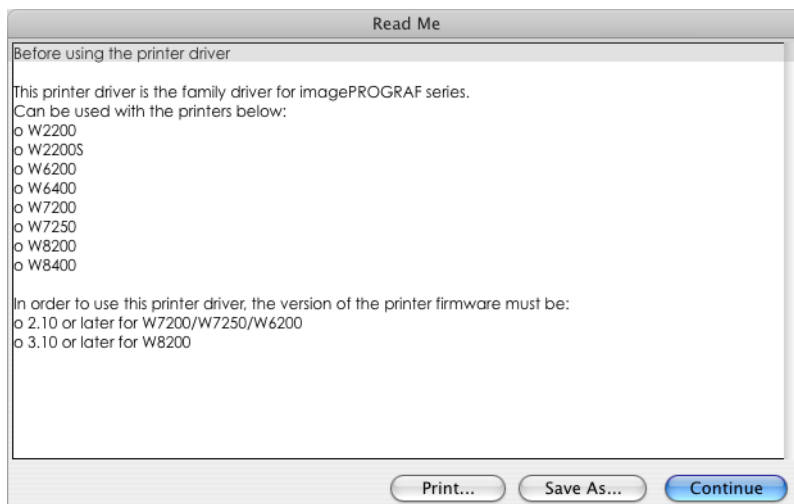


With Mac OS 9.x go to step 4.

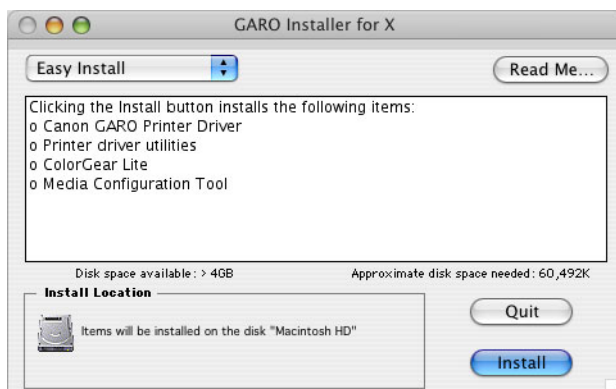
4. After you have read the software User's Licensing Agreement, click the **Accept** button.



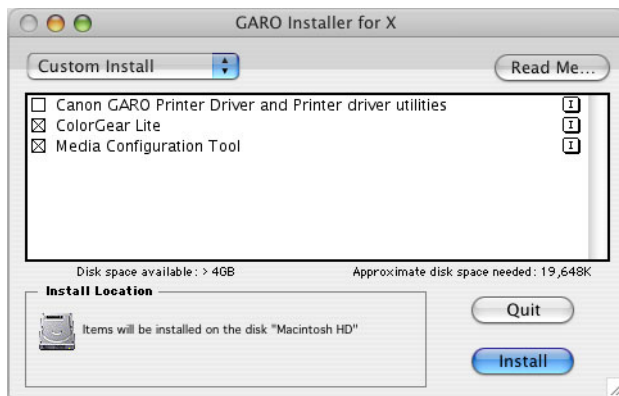
5. Click the **Continue** button.



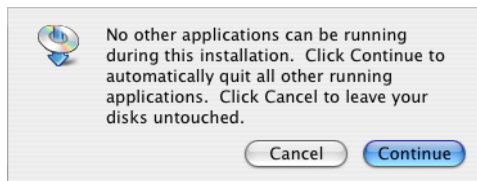
6. Select **Easy Install**.

**Note**

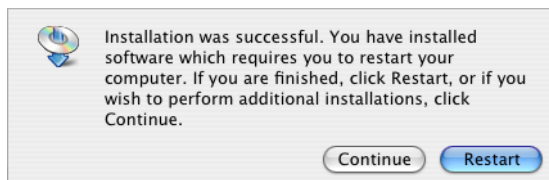
You can install by selecting **Custom Install**, and selecting only the item you wish to install.



7. Click the **Install** button.
8. Press the **Continue** button to quit another application.



9. When the following message is displayed, click the **Restart** button.



The installation of the Media Configuration Tool is complete.



Note

When the installation is completed properly, the **Media Configuration Tool** folder is saved in the following folder.

Application: Canon Utilities: imagePROGRAF: Media Configuration Tool

10. Remove the User Software CD-ROM from the CD-ROM drive.

Procedures for Uninstalling

When uninstalling Media Configuration Tool, use the User Software CD-ROM.

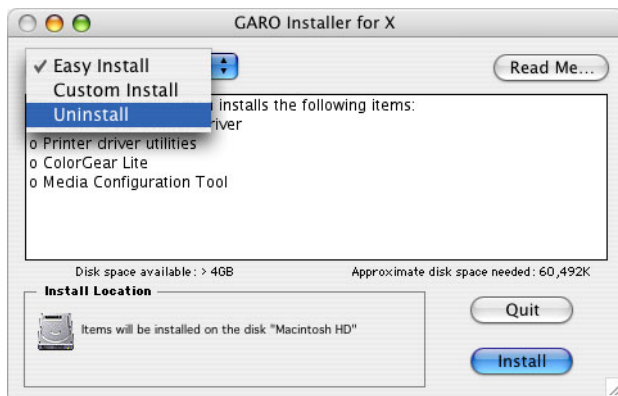


Note

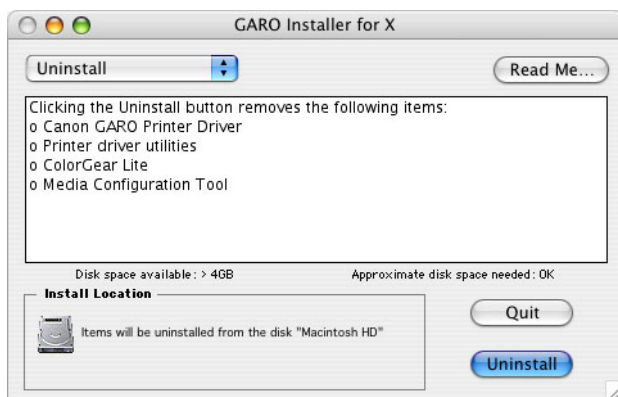
When you run the uninstaller, the printer driver is also uninstalled. When there are items that you wish to install, after performing the operation below, go through the installation procedures again and select the desired items in **Custom Install** and install them.

1. Perform the installation procedures 1 through 5.

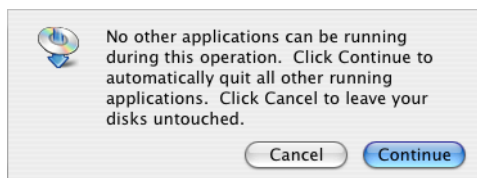
2. Select **Uninstall**.



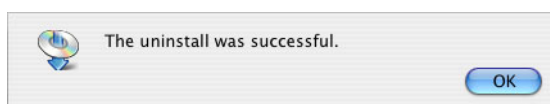
3. Click the **Uninstall** button.



4. Press the **Continue** button when another application is running.



5. When the following message is displayed, click the **OK** button.



Media Configuration Tool and other items have been uninstalled.

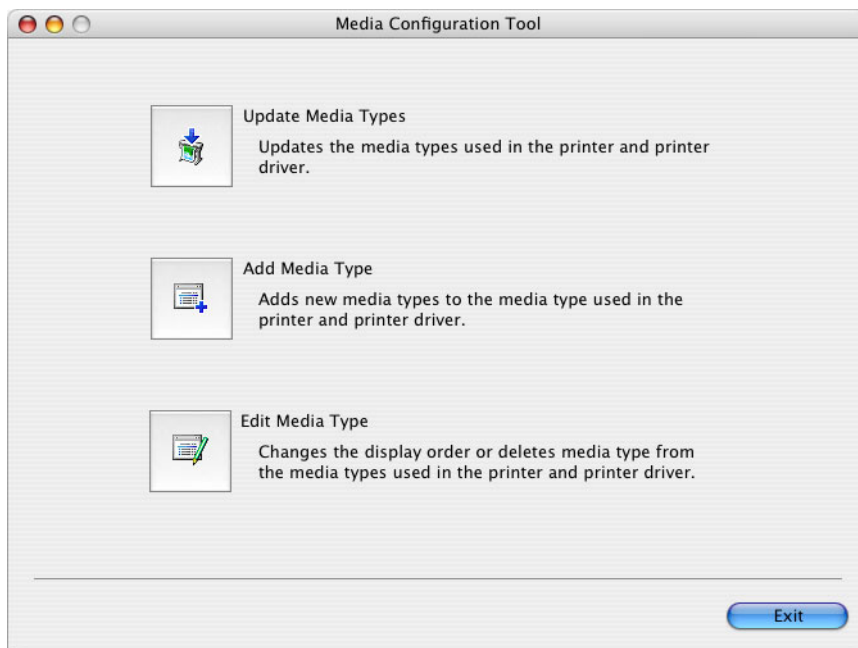
6. Remove User Software CD-ROM from the CD-ROM drive.



Starting the Media Configuration Tool

When the installation completes properly, the Media Configuration Tool is added to **Application** menu.

From the **Application** menu go to **Canon Utilities** -> **imagePROGRAF** and select **Media Configuration Tool** to open the Media Configuration Tool main screen.



Important

If a compatible printer driver is not installed, the Media Configuration Tool will not start. If you attempt to start the Media Configuration Tool when a printer driver is not installed, the warning message below is displayed.



Chapter 2 Functions of the Media Configuration Tool

The Media Configuration Tool is software to store media information when media (media types) supported by the printer have been added. It offers functions for users familiar with media and printers.

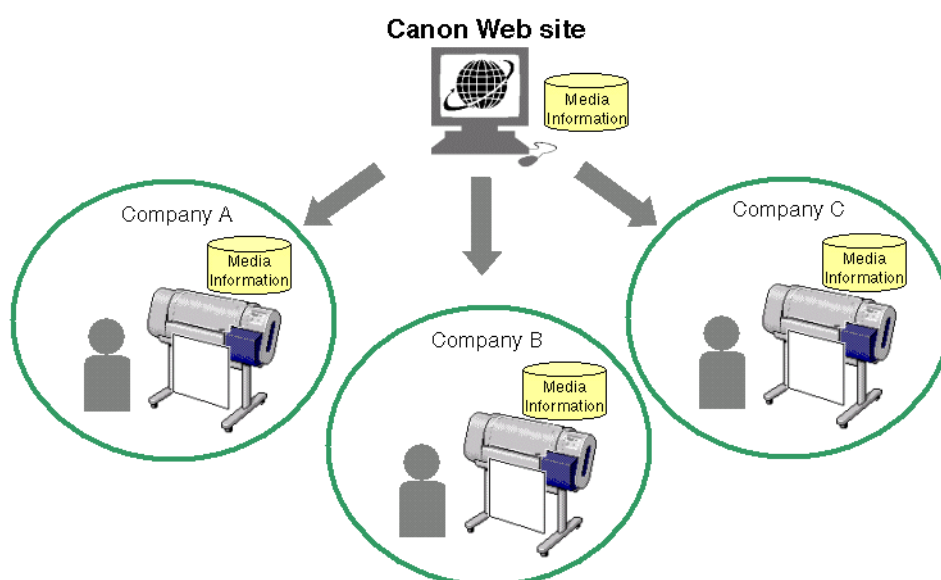
The explanation below outlines the functions and operations of the Media Configuration Tool.

The Functions of the Media Configuration Tool

The Media Configuration Tool can be used for the following objectives.

■ Replacing all of the printer and printer driver media information at once

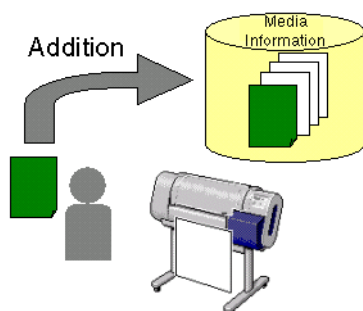
If any of the newly added media types or special media are deleted after the printer has been sold, you can replace the printer driver media information by downloading the latest media information files from the Canon Web site. This function allows you to replace printer or printer driver media information files.



Refer to Chapter 3 “Updating Media Information File” (p.3-1) for more information on this function.

■ Adding user defined media types to the printer and printer driver media menus

You can add your customer defined media types to the printer and printer driver media menus. Additionally, you can set the media name of your choice to the printer operating panel and the printer driver.



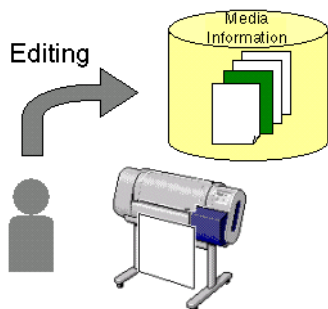
Refer to Chapter 4 “Adding Media Types” (p.4-1) for more information on this function.

■ Detailed Settings of Media Properties

When adding media types you can perform detailed settings to match media type properties such as **Media Thickness**, **Vacuum Strength**, and **Cut Speed**. For instance, when adding media that does not dry quickly, you can increase the value for **Drying Time**. Refer to “Input Media Properties” in Chapter 4 “Adding Media Types” (p.4-4) for an explanation.

■ Customizing the printer and printer driver media type menu

You can change the display order of the media types on the printer operating panel and printer driver, you can change the name of the media, and you can erase the user-defined media.



Note

You cannot change or delete the names for standard media (Canon media).

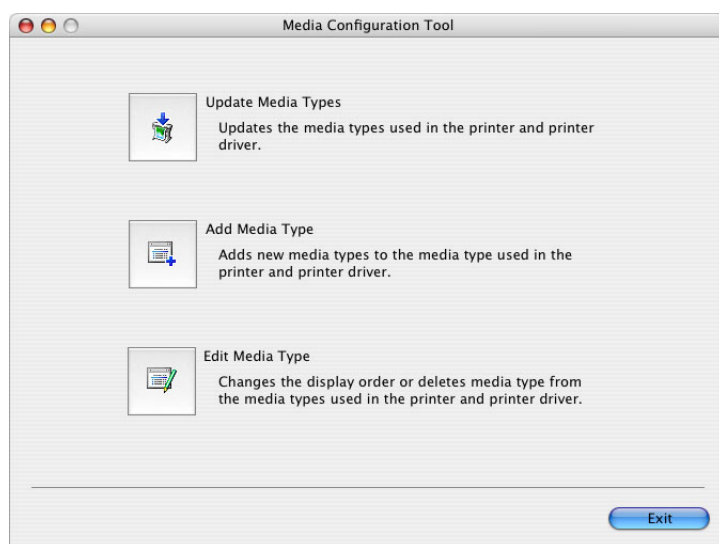
Refer to Chapter 5 “Editing Media Types” (p.5-1) for more information on this function.

Outline of the Media Configuration Tool Functions

The explanation below is an outline of the Media Configuration Tool.

■ The Media Configuration Tool Main Screen

You can perform settings for the Media Configuration Tool in the Media Configuration Tool main screen.



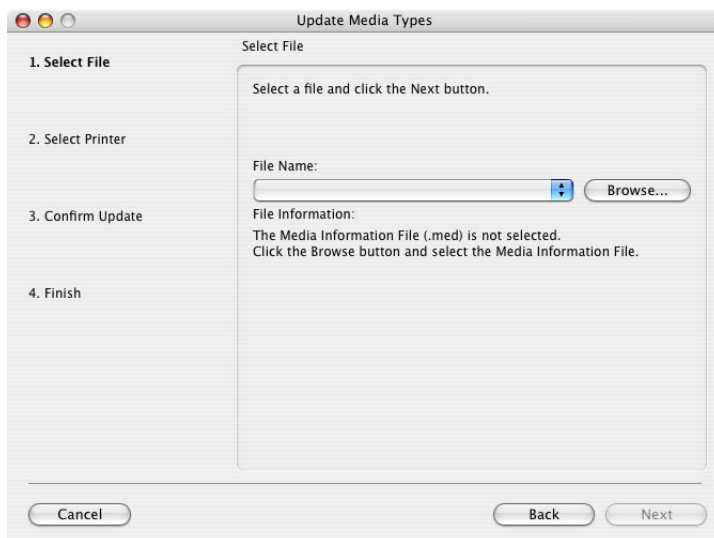
Note

Refer to “Starting the Media Configuration Tool” (p.1-5) for information on how to start the Media Configuration Tool.

Three buttons display on the main screen of the Media Configuration Tool: **Update Media Types**, **Add Media Type**, and **Edit Media Type**. The following are explanations for each button.

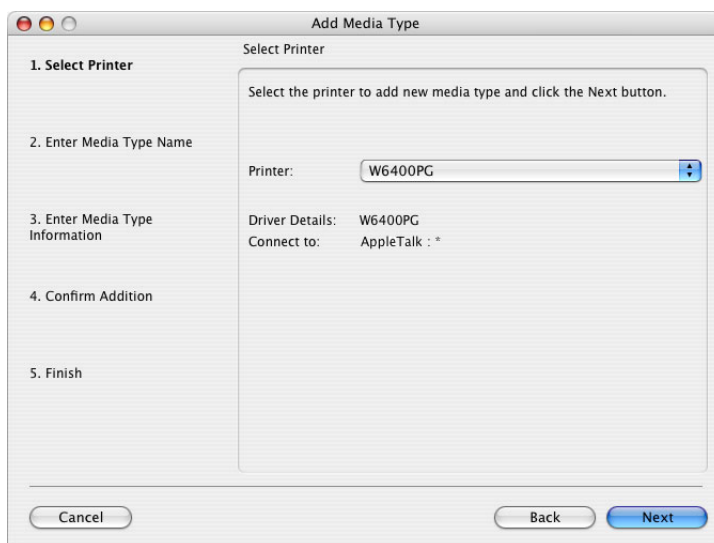
- The **Update Media Types** Button

When you click this button, the **Update Media Types** wizard starts. The wizard is used to replace printer and printer driver media information files with media information files that you have downloaded from the Canon Web site or another company's Web site.



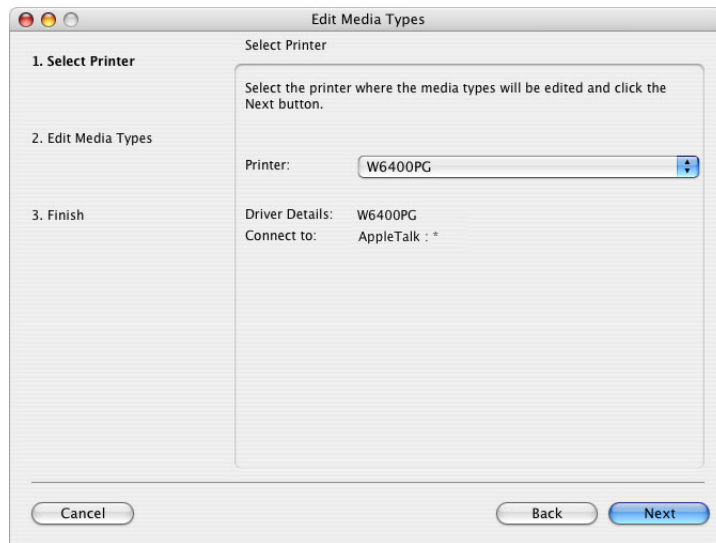
- The **Add Media Type** Button

When you click this button, the **Add Media Type** wizard starts. This wizard is used to add new media types to the media type information.



- The **Edit Media Type** Button

When you click this button, the **Edit Media Types** wizard starts. This wizard is used to change the display order of the media type on the printer operating panel and printer driver and to delete user-defined media.

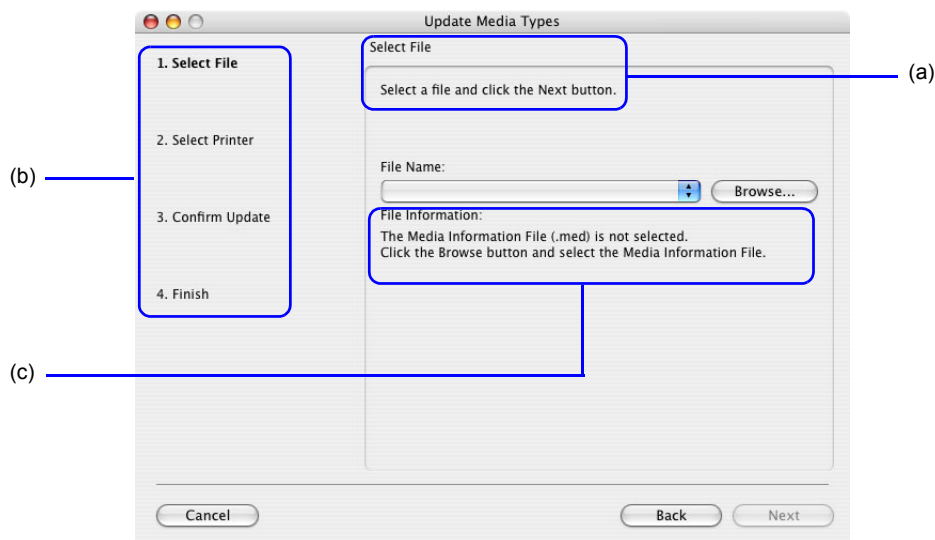


What follows is an explanation on the wizard screen content.

■ Wizard Screen Content

When you click a button on the main screen of the Media Configuration Tool, the wizard associated with that button starts. An operation guide for each wizard displays. Perform settings for the Media Configuration Tool following the wizard operation guide display. Additionally, the operation steps display on the left side of every wizard. When one setting is complete, the wizard moves to display the next step.

The wizard screen content is explained below using the **Update Media Types** wizard as an example.



Content	Description
(a) Operation Guide	Explains the operation details.
(b) Operation Steps	Displays the operation steps to be carried out in the wizard. The current step is indicated in bold.
(c) Information	Displays detailed information about the setting.

Chapter 3 Updating Media Information File

When you click the **Update Media Types** button on the main screen of the Media Configuration Tool the **Update Media Types** wizard starts. Using this wizard you can replace printer and printer driver **Media Information File** with **Media Information File** you have downloaded from the Canon Web site or another company's Web site.

The explanation below is on the update method for the **Media Information File**.

The procedures for updating the media type information with the **Update Media Types** wizard are as follows.

1. **Select the file** "Select the Media Information File" (p.3-1)
↓
2. **Select printer** "Select Printer to Update" (p.3-3)
↓
3. **Check what is to be updated** "Check What Is to be Updated" (p.3-4)



Important

It is required that you download the **Media Information File** from the Canon Web site or any other company's Web site before performing the update procedures here. Access the Canon Web site or the relevant company's Web site for more information on how to download the **Media Information File**.

Select the Media Information File

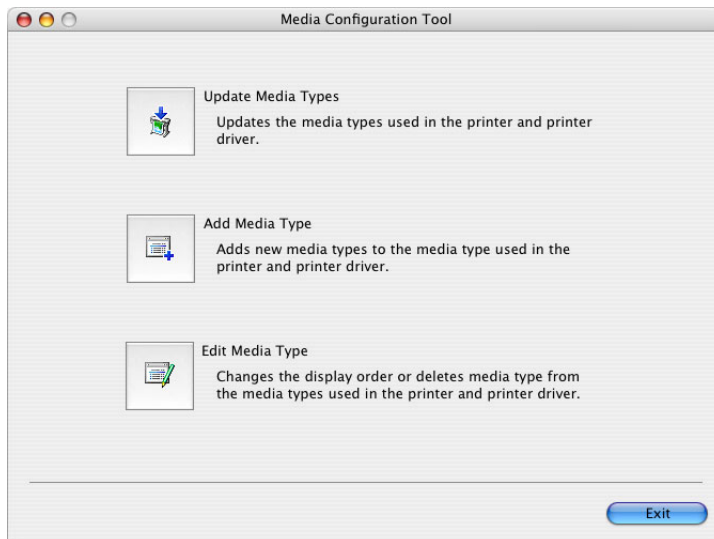
To update the media information file you must specify the **Media Information File** you have downloaded from the Canon Web site in the **Update Media Types** wizard.

1. Starting the Media Configuration Tool.

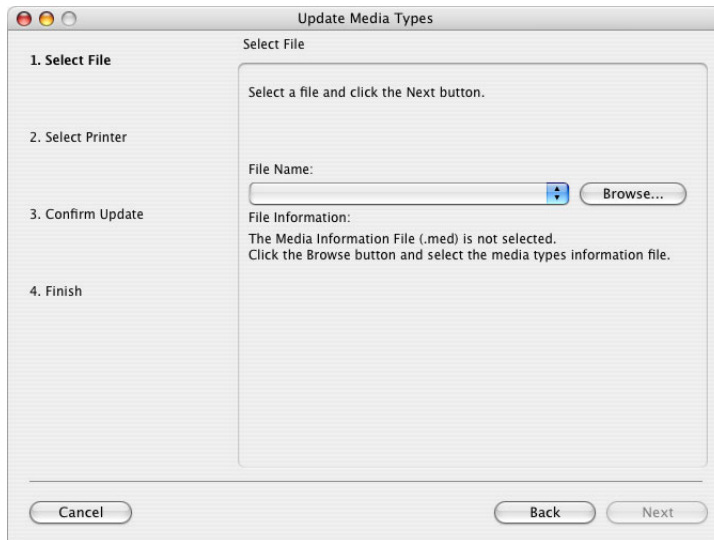


Note

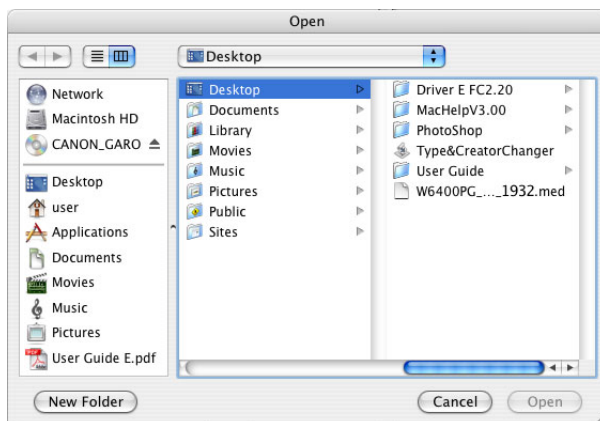
Refer to "Starting the Media Configuration Tool" (p.1-5) for more information on how to start the Media Configuration Tool.



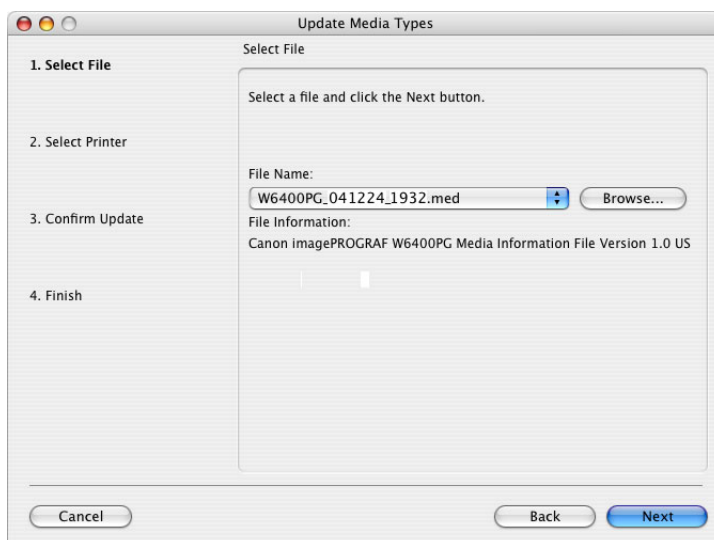
2. Click the **Update Media Types** button.
The **Update Media Types** wizard starts.



3. Click the **Browse** button to open the **Open** dialog box.
4. Move the file to a directory containing Media Information File (*.med).

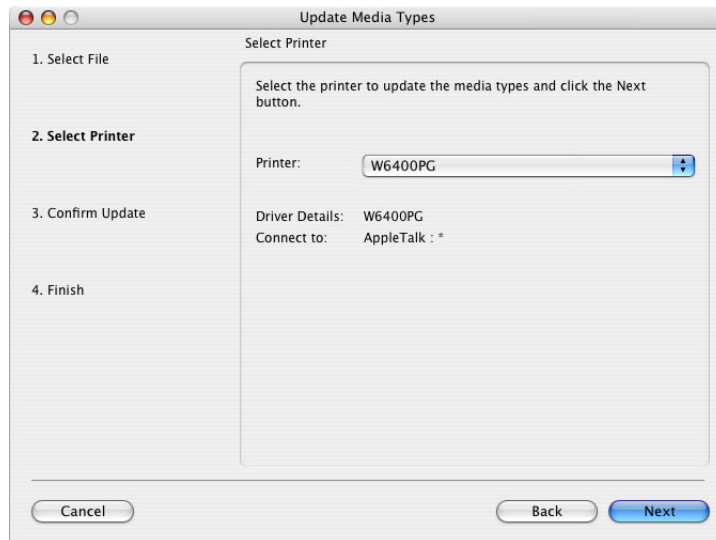


5. Select the **Media Information File** and click the **Open** button.
The name of the Media Information File you have selected in the **Open** dialog box is displayed in **File Name** in the **Update Media Types** wizard.



6. Click the **Next** button.

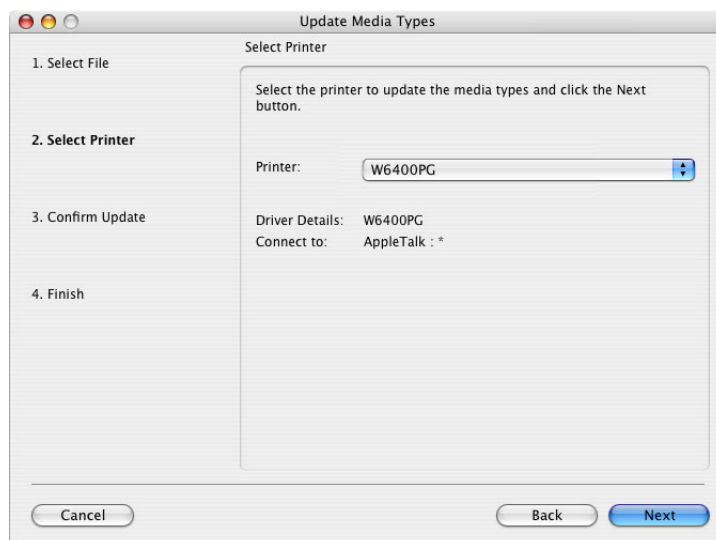
The **Update Media Type** wizard moves to display **Select Printer**.



Select Printer to Update

After selecting the **Media Information File**, select the printer driver where the media information files will be updated.

1. Confirm the printer, where media type information is to be updated, to be displayed in **Printer** in the **Update Media Type** wizard.

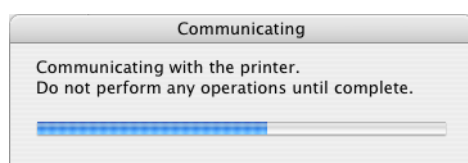


Note

When you do not save the printer driver to be updated, the message **Cannot find the printer driver to be updated.** is displayed. Click the **Cancel** button to cancel updating the media information.

2. Click the **Next** button.

Communication with the printer starts and the following dialog box is displayed.



Important

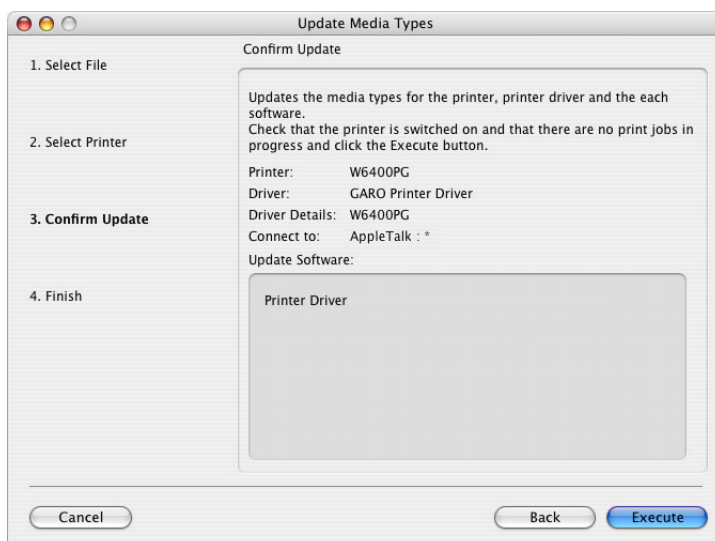
Do not attempt to print or turn the off while the program is communicating with the printer.

Note

- When the program cannot communicate with the printer, the following warning message is displayed. Read the message and click the **Next** button.



When the program has finished communicating with the printer, the **Update Media Types** wizard display moves to display **Confirm Update**.



Check What Is to be Updated

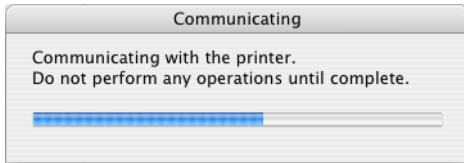
Select the printer to be updated. When the program has finished communicating with the printer, information acquired from the printer such as the printer name, the driver details, and the connection point is displayed in the **Update Media Types** wizard. You can make the final check of what is to be updated in this window.

1. Confirm the information acquired from the printer in the **Update Media Types** wizard.

Important

- When there is data set to the printer that is older than the data to be updated, the printer, printer driver and software media types are updated.
- When there is data set to the printer that is newer than the data to be updated, the media information files selected are updated. When you would like to let the data that is set to the printer remain, click the **Cancel** button.
- When the data set to the printer is the same as the data to be updated, only the software media types are updated.

- To update click the **Execute** button.
Communication with the printer starts and the following dialog box is displayed.

**Important**

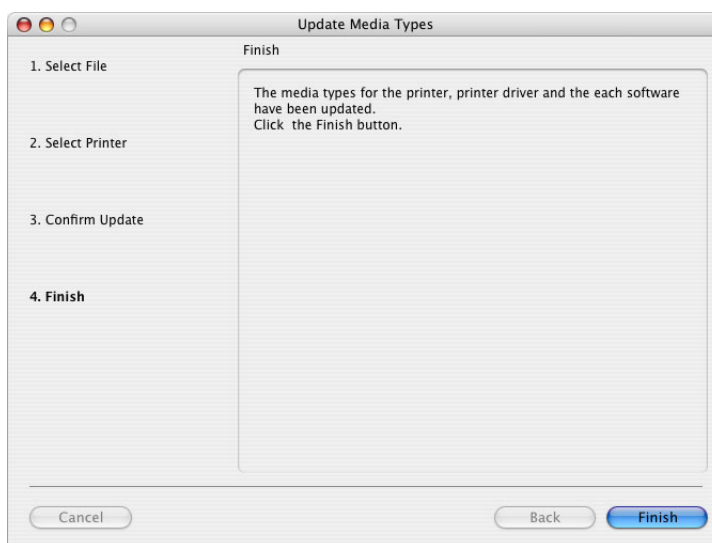
Do not attempt to print or turn the off while the program is communicating with the printer.

**Note**

- When the program cannot communicate with the printer, the following warning message is displayed. Read the message and click the **Execute** button again.



- When the media information files are properly updated, the screen below appears. Click the **Finish** button to close the **Update Media Types** wizard.

**Note**

- When the update of the **Media Information File** is completed, new media information files are created in the following folder.
OSX.3 (with Mac OS X): Users: Login name: Desktop
- As demonstrated below, the file name consists of the printer name, the date created (6 digits: yymmdd), the time created (4 digits: hhmm) followed by an underbar "_" and the suffix, "med".
W6400PG_041224_1932.med (with the W6400PG)

Chapter 4 Adding Media Types

When you click the **Add Media Type** button in the Media Configuration Tool main screen, the **Add Media Type** wizard starts. Using this wizard you can add media types to the printer and printer drive Media menu.

The explanation below is on how to add media types.

The procedures to add media types with the **Add Media Type** wizard are as follows.

1. **Select Printer** “Select Printer to be Added” (p.4-1)
↓
2. **Input Media Type Name** “Input Media Name” (p.4-3)
↓
3. **Input Detailed Information on Media Type** “Input Media Properties” (p.4-4)
↓
4. **Check Addition** “Check Addition” (p.4-9)

Select Printer to be Added

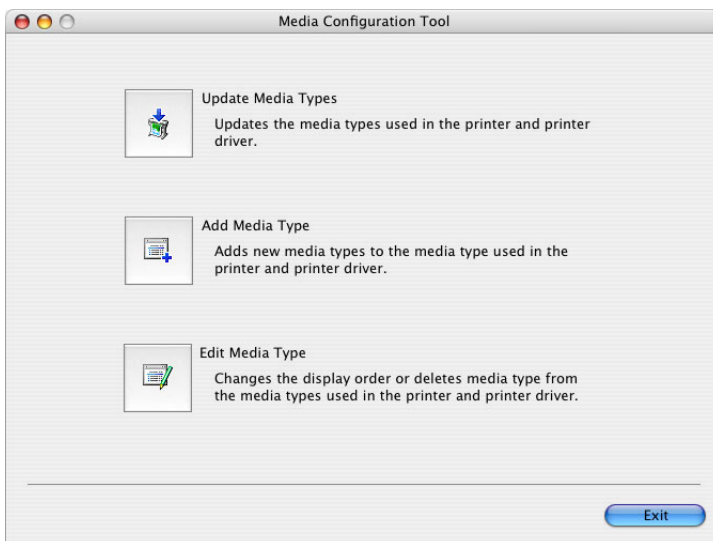
To select the media type, you must specify in the **Add Media Type** wizard, the printer where the media type will be added.

1. Start the Media Configuration Tool.

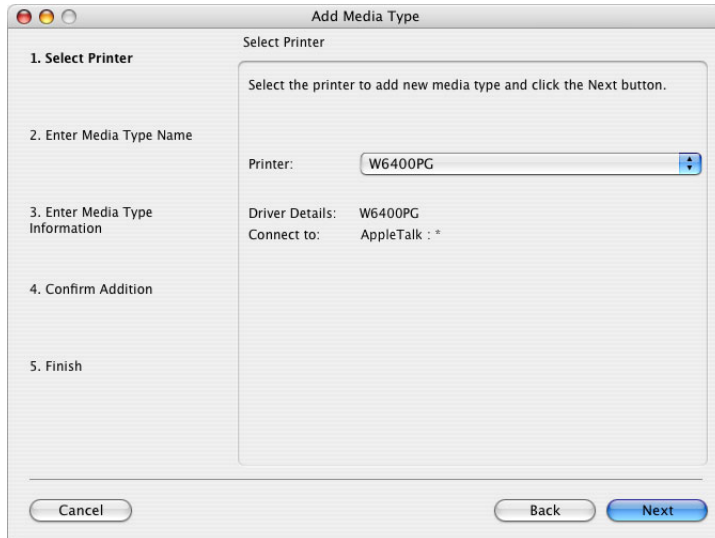


Note

Refer to “Starting the Media Configuration Tool” (p.1-5) on how to start the Media Configuration Tool.



- Click the **Add Media Type** button.
The **Add Media Type** wizard starts.



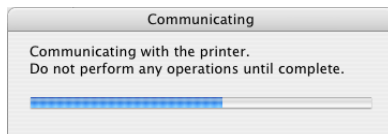
- Select from the **Printer** list the printer where you will add the media type.



Note

When you do not save the printer driver where the media is to be added, the message **Cannot find the printer driver to add to.** is displayed. Click the **Cancel** button to cancel adding the media type.

- Click the **Next** button.
Communication with the printer starts and the following dialog box is displayed.



Important

Do not attempt to print or turn the off while the program is communicating with the printer.

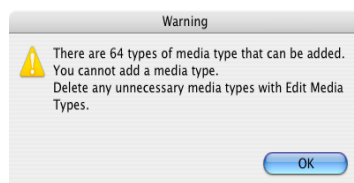


Note

- When the program cannot communicate with the printer, the following warning message is displayed. Read the message and click the **OK** button.



- When there are already over 64 media types saved in the printer driver, the following warning message is displayed. You can add more media types after you have deleted unnecessary media using the **Edit Media Type** wizard. Refer to Chapter 5 “Editing Media Types” (p.5-1) for more information on how to edit media types.



When the program is done communicating with the printer, the screen moves to display **Add Media Type: Enter Media Type Name**.

Input Media Name

You can input the name of the media you have added here. The names you enter here display on the **Printer driver**, the **Printer operating panel** and the **Remote UI**.

Indicated below are the conditions for inputting media names.

Media Name	Conditions
Name of Media Type Displayed on Printer Driver	You can input up to 32 characters.
Name of Media Type Displayed on Printer Operating Panel	You can input up to 15 alphabet or numerical characters.
Name of Media Type Displayed on Remote UI	You can input up to 31 alphabet or numerical characters.

Important

- You cannot input “\” (back slash).
- You cannot use “-” (hyphen) at the front of the media name.
- Only spaces are prohibited from entry into names.
- A warning message will be displayed in any of the following cases:
 - a. When the media name is not input
 - b. When the number of characters input exceeds the limit
 - c. When a media type of the same name is already saved
 - d. When characters input are not correct

1. Input the name of your choice into **Name of Media Type Displayed on Printer Driver**.
2. Input the name of your choice into **Name of Media Type Displayed on Printer Operating Panel**.
3. Input the name of your choice into **Name of Media Type Displayed on Remote UI**.

4. Click the **Next** button.

The screen moves to display **Add Media Type: Enter Media Type Information**.

The screenshot shows the 'Add Media Type' dialog box with the 'Enter Media Type Information' step selected. The 'Media Type' dropdown is set to 'Plain Paper'. Below it is a table titled 'Media Type Detailed Settings List' with the following data:

Item	Settings
Drying Time	
Between Pages	No
Between Scans	No
Roll Paper Margin for Safety	
Near End Margin	5mm
Far End Margin	5mm
Printhead Hght Adj. Lever Setting	Middle(Standard)
Media Thickness	Thin

Buttons at the bottom include 'Cancel', 'Back', and 'Next'.

Input Media Properties

You can set the properties of the media that is to be added.

Select the item that has similar properties from standard media, and then set properties of the new media based on those setting values.

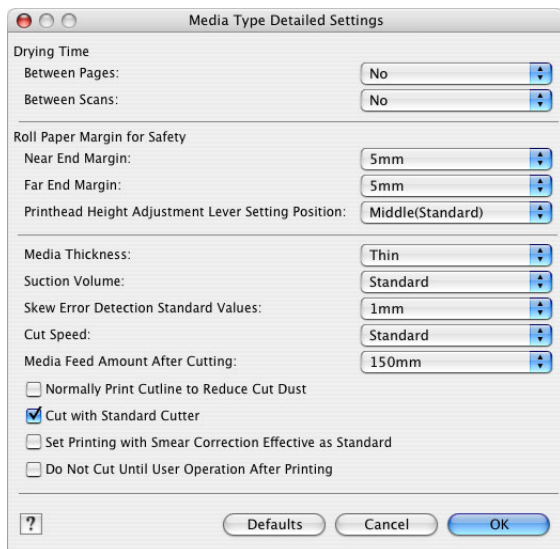
1. From the **Media Type** list in the **Add Media Type: Enter Media Type Information** select the media type that is to be the base for the media type to be added.
A detailed settings list of the media type select in **Media Type Detailed Settings List**.

This screenshot is identical to the one above, showing the 'Add Media Type' dialog box with the 'Enter Media Type Information' step selected. The 'Media Type' dropdown is set to 'Plain Paper'. Below it is a table titled 'Media Type Detailed Settings List' with the following data:

Item	Settings
Drying Time	
Between Pages	No
Between Scans	No
Roll Paper Margin for Safety	
Near End Margin	5mm
Far End Margin	5mm
Printhead Hght Adj. Lever Setting	Middle(Standard)
Media Thickness	Thin

Buttons at the bottom include 'Cancel', 'Back', and 'Next'.

2. Click the **Media Type Detailed Settings** button to open the **Media Type Detailed Settings** dialog box.



3. Set the **Drying Time** for the media type to be added.
 - a. Set the between pages (Drying Time) in **Between Pages** in **Drying Time**.

The following settings are available for drying time in **Between Pages**.

Between Pages	Setting
No	This eliminates the wait time for the ink to dry.
30 sec., 1 min., 3 min., 5 min., 10 min., 30 min., 60 min.	The sheet is ejected when the specified time after printing has elapsed. Increase the value for this setting with media that does not dry quickly.

- b. Set the between scan drying time from the **Between Scans** list in **Drying Time**.
The following settings are available for drying time in **Between Scans**.

Between Scans	Setting
No, 1 sec., 3 sec., 5 sec., 7 sec., 9 sec.	For media that has problems, such as ink smears on the page or colors that seem uneven during borderless printing etc., increase the value for this setting.

4. Set the **Roll Paper Margin for Safety** of the media type to be added.
 - a. Set the length of the near end margin for the roll paper from the **Near End Margin** list in **Roll Paper Margin for Safety**.

The following settings are available for **Near End Margin**.

Near End Margin	Setting
5 mm	For media that has no problem when printing with a standard size margin.
20 mm	For media that has a strong tendency to curl, causing the printhead to scratch the surface.

- b. Set the length of the far end margin for the roll paper from the **Far End Margin** list in **Roll Paper Margin for Safety**.

The following settings are available for **Far End Margin**.

Far End Margin	Setting
5 mm	For media that has no problem when printing with a standard size margin.
10 mm	When printing an image at the very end of the end margin, the cutter touches the page before the ink has dried and dirties the printed image. This setting sets the margin about 5 mm (in the feed direction) longer than the standard margin for the media size.



Important

When you set the margin smaller, the printed image may not print properly or, with some media, the printhead may scratch the surface.

- c. From the **Printhead Height Adjustment Lever Setting Position** list in **Roll Paper Margin for Safety** set the position of the printhead height adjustment lever set with the printer to match the media.

The following settings are available for **Printhead Height Adjustment Lever Setting Position**.

Printhead Height Adjustment Lever Setting Position	Setting
Upper	For media that has a strong tendency to curl, causing the printhead to scratch the surface. Before you start a print job, check the setting of the printhead height adjustment lever.
Middle (Standard)	For standard media.
Lower	Select this setting to print fine, delicate lines of the highest precision as in a CAD design or drawing. However, the ink absorption characteristics of some media may cause the printing surface to ripple when the ink is absorbed, causing the printhead to scratch the surface of the printout. You should become familiar with the properties of the media and do the setting and limit such printing to media that will not cause rippling. Example: Film, etc. Before you start a print job, check the setting of the printhead height adjustment lever.

5. Set the thickness of the media to be added from the **Media Thickness** list. The following settings are available for **Media Thickness**.

Media Thickness	Setting
Thick	Select this when the media set is thick, or when the printhead scratches the surface.

Media Thickness	Setting
Standard	For media that is a standard thickness and has no problem printing.
Thin	Select this when the media set is thin, or when the image is adversely affected.

6. From the **Vacuum Strength** list set the Vacuum Strength when printing a media type to be added.

The following settings are available for **Vacuum Strength**.

Vacuum Strength	Setting
Strongest	For media that does not settle even when set to Strong .
Strong	For media that does not settle properly because it curls.
Standard	For media that has no problems when printed.
Weak	For thin media, or when the image on the media is adversely affected.

7. From the **Skew Error Detection Standard Values** list set the standard which will cause a media slant detection error in the printer.

The following settings are available for **Skew Error Detection Standard Values**.

Skew Error Detection Standard Values	Setting
1 mm, 2 mm, 3 mm, 4 mm, 5 mm	Reduce the value for media used for documents where the precision rate is important and for media where strict detection of slants is required. Increase the value for media that does not slant much and for media that is used for documents that allow for a degree of slant.

8. Set the auto cut speed for media to be added from the **Cut Speed** list.

The following settings are available for **Cut Speed**.

Cut Speed	Setting
Standard	For media that has no problem with cutting.
Fast	For media that has problems, such as inaccurate cutting with the Standard setting.

9. Set the amount of media to purge after cutting the media type to be added in the **Media Feed Amount After Cutting** list.

The following setting are available for **Media Feed Amount After Cutting**.

Media Feed Amount After Cutting	Setting
No	Does not purge media after cutting.

Media Feed Amount After Cutting	Setting
150 mm, 390 mm	Sets the media purge amount for media that does not easily fall into place after being auto cut. The purged media is returned to the original position during cutting and continues to print with no change in print starting position.

Important

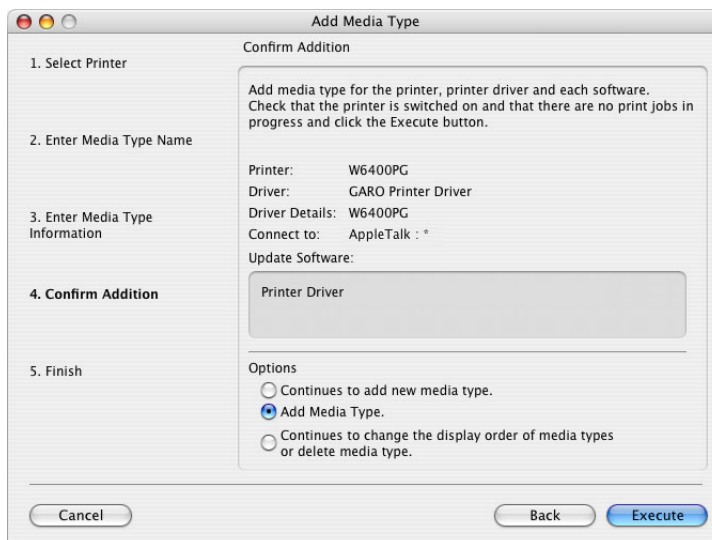
- Place a checkmark in **Normally Print Outline to Reduce Cut Dust** for media that easily produces cut waste, such as backlight film. These settings can protect against a reduction in print quality and printhead malfunction. However, do not set this for media that curls easily, such as plain paper and thin media. The media will not be properly cut, and the media may become jammed.
- Place a checkmark in **Cut with Standard Cutter** to use the standard cutter for auto cut. Remove the checkmark with media that cannot be cut using the standard cutter.
- When you place a checkmark in **Set Printing with Smear Correction Effective as Standard** for media with unwanted yellow portions in images, or lines in the printing and changes in the image color balance, the lines may be improved.
- When you place a checkmark in **Do Not Cut Until User Operation After Printing** for media that you do not want to drop in the basket after printing, the media will not be auto cut after purging. Once the ink has dried, follow the printer operating panel to cut the media.

10. Click the **OK** button to close the **Media Type Detailed Settings** dialog box.

The **Add Media Type** wizard displays.

11. Click the **Next** button.

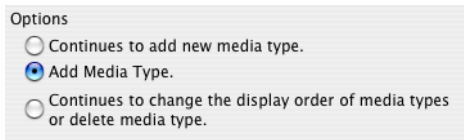
The **Add Media Type** moves to display **Confirm Addition**.



Check Addition

When you input the detailed information on media types with the **Add Media Type: Confirm Addition** and click the **Next** button, the **Printer, Driver Details**, and the **Update Software** are displayed. You can make the final check of what is to be added in this window.

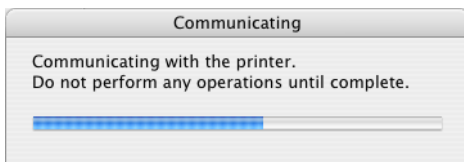
1. Check the items to be added that are displayed in the **Add Media Type** wizard.
2. Select **Add Media Type** from **Options**.



Note

- When adding new media types, select **Continues to add new media type** from **Options**.
- When editing the media type, select **Continues to change the display order of media types or delete media type** from **Options**.

3. Click the **Execute** button.
Communication with the printer starts and the following dialog box is displayed.



Important

Do not attempt to print or turn the off while the program is communicating with the printer.



Note

- When the program cannot communicate with the printer, the following warning message is displayed. Read the message and click the **OK** button again.

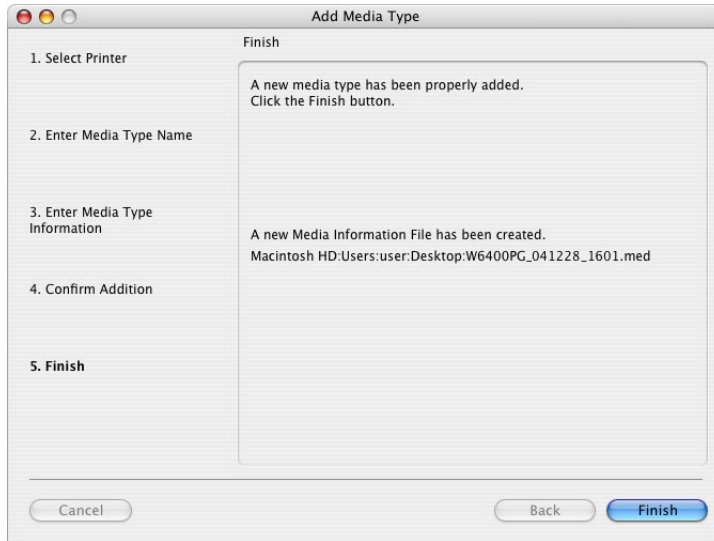


- The following error message may be displayed with some data to be updated.
When the printer media type has been changed by another user:





- When the media types have been properly added, the screen below appears. Click the **Finish** button to close the **Add Media Type** wizard.



Note

- When the installation completes properly, the new media information file is saved in the folder below.
OSX.3 (with Mac OS X): Users: Login name: Desktop
- As demonstrated below, the file name consists of the file name, the date created (6 digits: yymmdd), the time created (4 digits: hhmm) followed by an under bar “-” and the suffix, “med”.
W6400PG_041228_1601.med (with the W6400PG)

Chapter 5 Editing Media Types

When you click the **Edit Media Type** button in the Media Configuration Tool main screen, the **Edit Media Types** wizard starts. Using this wizard you can change the display order or delete media type from the media type used in the printer and printer driver. The explanation below is on how to edit media types.

The procedures to edit the media type in the Edit Media Type wizard are as follows.

1. **Select Printer Select** “Select Printer to be Edited” (p.5-1)
↓
2. **Edit Media Type** “Edit Media Type” (p.5-2)

Select Printer to be Edited

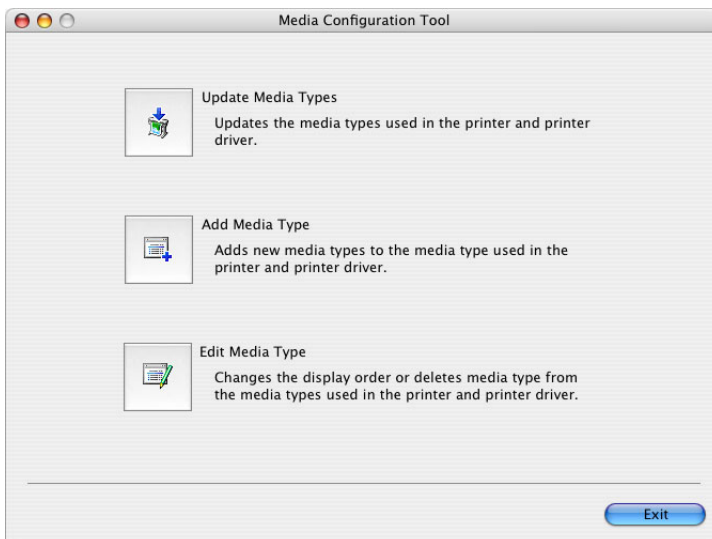
To edit the media type, specify the printer where the media type is to be edited with the **Edit Media Type** wizard.

1. Start the Media Configuration Tool.

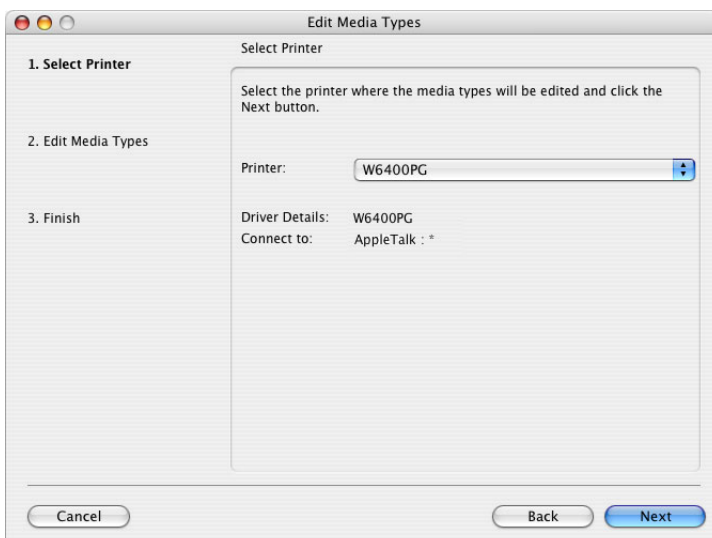


Note

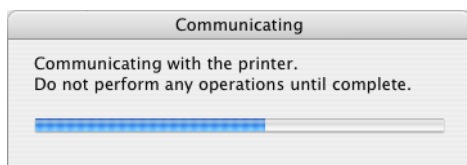
Refer to “Starting the Media Configuration Tool” (p.1-5) for information on how to start the Media Configuration Tool.



2. Click the **Edit Media Type** button.
The **Edit Media Types: Select Printer** is displayed.



- Select the printer where the media type is to be edited from the **Printer** list.
- Click the **Next** button.
Communication with the printer starts and the following dialog box is displayed.

**Important**

Do not attempt to print or turn the off while the program is communicating with the printer.

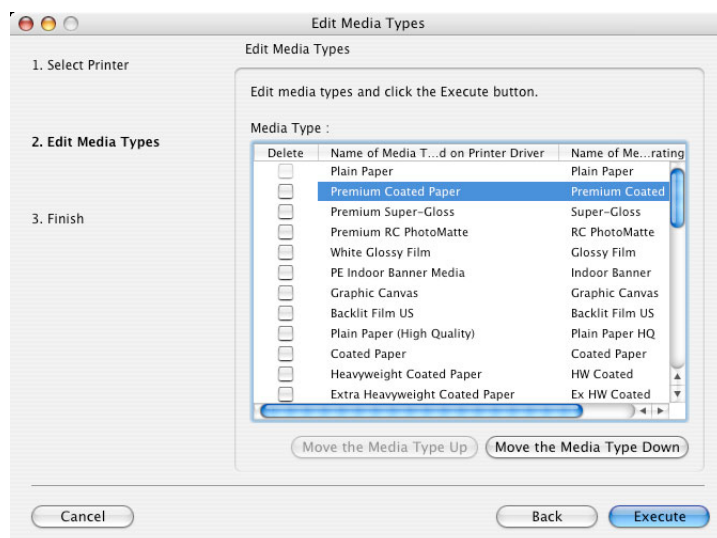
**Note**

- When the program cannot communicate with the printer, the following warning message is displayed. Read the message and click the **OK** button.



- When you do not save the printer driver to be edited, the message **Cannot find the printer driver to be edited.** is displayed. Press the **Cancel** button to cancel editing the media type.

When the program is done communicating with the printer, the **Edit Media Types** wizard moves to display **Edit Media Types**.



Edit Media Type

After you have selected the printer where the media type is to be edited, you can edit the media types displayed on the printer and the printer driver.

**Important**

When you edit the media type, the information about the media type overwrites the media type information file. It follows then that the information added for the media is lost. To add and register media, select **Add Media Type**, confirm the information in the media type details list, then make a memo.

1. Edit the media information in the **Edit Media Type** wizard.

Changing the Display Order of Media Types

- a. From the **Media Type** list select the media that you would like to change the display order of, and click the **Move the Media Type Up** button and **Move the Media Type Down** button.

**Note**

- When you want to move the selected item up, click the **Move the Media Type Up** button. Each time you press the **Move the Media Type Up** button the selected item moves one slot up.
- When you want to move the selected item down, click the **Move the Media Type Down** button. Each time you press the **Move the Media Type Down** button the selected item moves one slot down.
- You can also **Change Display Order** by dragging and dropping items on the list.
- You cannot change the display position of **Plain Paper**.

Changing the Name of the Media Types

- a. From the **Media Types** list select the media that you would like to change the name of, and double click.

The **Enter Media Type Name** dialog box is displayed.

- b. Input the **Name of Media Type Displayed on Printer Driver**.
- c. Input the **Name of Media Type Displayed on Printer Operation Panel**.

Indicated below are the conditions for inputting media names.

Name of Media Type	Conditions
Input the Name of Media Type Displayed on Printer Driver	You can input up to 32 characters. *You cannot change the standard media (Canon media).
Input the Name of Media Type Displayed on Printer Operation Panel	You can input up to 15 alphabet or numerical characters. *You cannot change the standard media (Canon media).

 **Important**

- You cannot input “\” (back slash).
- You cannot use “-” (hyphen) at the front of the media name.
- Only spaces are prohibited from entry into names.
- A warning message will be displayed in any of the following cases:
 - a. When the media selected is the standard media (Canon media)
 - b. When the media name is not input
 - c. When the number of character input exceeds the limit
 - d. When a media type of the same name is already saved
 - e. When characters input are not correct

Deleting a Media Type

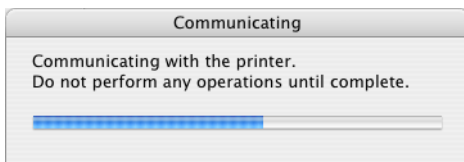
- a. Place a checkmark in the checkbox of the media you wish to delete in the **Media Type** list.

 **Important**

- When you place a checkmark in standard media (Canon media), the media name will not be deleted just by turning gray. However, the media name will stop being displayed on the printer driver list.
- You cannot delete **Plain Paper** from **Media Type**.

2. Press the **Execute** button.

Communication with the printer starts and the following dialog box is displayed.


 **Important**

Do not attempt to print or turn the off while the program is communicating with the printer.

 **Note**

- When the program cannot communicate with the printer, the following warning message is displayed. Read the message and click the **OK** button again.

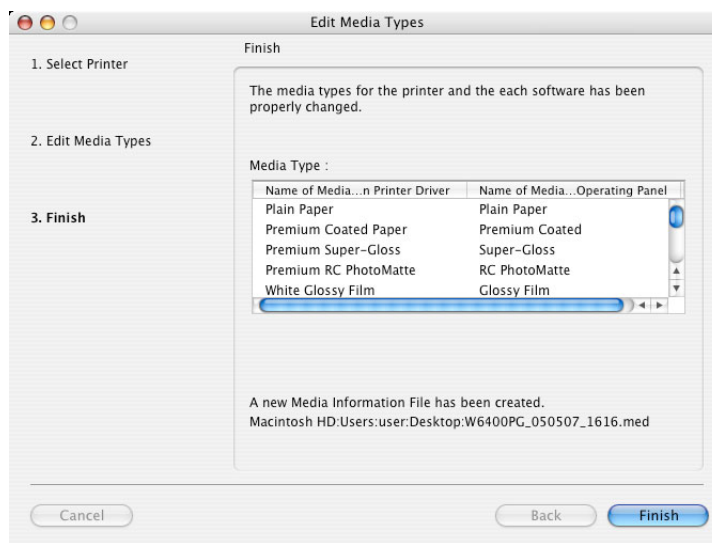


- The following error message may be displayed with some data to be changed.

When the printer media type has been changed by another user:



- When the printer and software media types have been properly updated, the screen moves to display **Edit Media Types: Finish**. Click the **Finish** button to close the **Edit Media Types** wizard.

**Note**

- When the media type edition is completed, new media information files are created in the following folder.
OSX.3 (with Mac OS X): Users: Login name: Desktop
- As demonstrated below, the file name consists of the file name, the date created (6 digits: yymmdd), the time created (4 digits: hhmm) followed by an under bar “_” and the suffix, “med.”
W6400PG_050507_1616.med (with the W6400)

Index

A

Add Media Type, 2-2, 4-9
Add Media Type Button, 2-3
Adding Media Types, 4-1

B

backlight film, 4-8
Between Pages, 4-5
Between Scans, 4-5

C

Cancel, 3-4
Canon media, 2-2, 5-4
CD-ROM drive, 1-1
Confirm Addition, 4-8
Confirm Update, 3-4
Continues to add new media type, 4-9
Continues to change the display order of media types or delete media type, 4-9
customer defined media, 2-1
Cut Speed, 2-2, 4-7
Cut with Standard Cutter, 4-8

D

Do Not Cut Until User Operation After Printing, 4-8
download, 3-1
Driver Details, 3-4, 4-9
Drying Time, 2-2, 4-5

E

Edit Media Type, 2-2, 5-2
Edit Media Type button, 2-4, 5-1
Edit Media Type wizard, 2-4, 4-2, 5-1
Editing Media Types, 5-1
Enter Media Type Information, 4-4
Enter Media Type Name, 4-3
Execute button, 3-5, 4-9, 5-4

F

Far End Margin, 4-6
Finish button, 3-5, 5-5
Functions of the Media Configuration Tool, 2-1

G

GARO Printmonitor, 1-1

I

Input Media Name, 4-3
Installation Procedures, 1-1

M

media, 2-1
Media Configuration Tool, 1-1, 2-2
Media Configuration Tool main screen, 1-5, 2-2, 4-1, 5-1
Media Feed Amount After Cutting, 4-7

media information, 2-1
Media Information File, 2-1, 2-3, 3-1
Media Properties, 2-2, 4-4
Media Thickness, 2-2, 4-6
Media Type, 4-4
Media Type Detailed, 4-8
Media Type Detailed dialog box, 4-5
Media Type Detailed Settings button, 4-5
Media Type Detailed Settings List, 4-4
media types, 2-2

N

Name of Media Type Displayed on Printer Driver, 4-3, 5-3
Name of Media Type Displayed on Printer Operating Panel, 4-3
Name of Media Type Displayed on Printer Operation Panel, 5-3
Name of Media Type Displayed on Remote UI, 4-3
name of the media, 2-2
Near End Margin, 4-5
Normally Print Outline to Reduce Cut Dust, 4-8

O

Open dialog box, 3-2
operating environment, 1-1
operating panel, 2-1
Options, 4-9

P

Printer, 4-9
Printer driver, 1-5, 2-1, 4-3
printer name, 3-4, 3-5
Printer operating panel, 4-3
Printhead Height Adjustment Lever Setting Position, 4-6

R

Remote UI, 4-3
Roll Paper Margin for Safety, 4-5

S

Select Printer to be Edited, 5-1
Select Printer to Update, 3-3
Select the Media Information File, 3-1
Set Printing with Smear Correction Effective as Standard, 4-8
setting values, 4-4
Skew Error Detection Standard Values, 4-7
software, 2-1
standard cutter, 4-8
standard media, 2-2, 4-4, 5-4
Starting the Media Configuration Tool, 1-5

U

Update Media Types, 2-2, 3-1, 3-3



Update Media Types Button, 2-3
Update Media Types wizard, 2-3, 2-4, 3-1,
3-2, 3-4
Updating Media Information Files, 3-1
User Software CD-ROM, 1-1

V

Vacuum Strength, 2-2

W

warning message, 1-5, 3-4, 3-5, 4-2, 4-9,
5-2, 5-4
Web site, 2-1, 2-3
Wizard Screen Content, 2-4