



imagePROGRAF

HDI Driver Guide

Contents

Before You Begin	ii
■ Compatible Printers	ii
■ Applicable AutoCAD Versions	ii
How to Use This Guide	ii
■ Conventions	ii
■ Button Notations	ii
■ Trademarks	ii
■ A Request to Our Customers	ii
Chapter 1 HDI Driver Installation	1-1
Operating Environment	1-1
Installation Procedure	1-1
■ Installing with the Canon Installer	1-1
■ Installing with the Add-A-Plotter Wizard	1-6
Chapter 2 Printing	2-1
Printing Procedure	2-1
Chapter 3 Setting Up a Print Job	3-1
Opening the Plotter Configuration Editor Dialog Box	3-1
■ Opening from the AutoCAD File Menu	3-1
■ Opening from the Start Menu	3-1
Plotter Configuration Editor Dialog Box Functions	3-2
■ Device and Document Settings Sheet	3-2
Opening the Custom Properties Dialog Box	3-5
Custom Properties Dialog Box Functions	3-5
■ Selecting the Media Type and Ink Type	3-6
■ Color Matching and Brightness Settings	3-6
■ Media Detailed Settings	3-7
Index	Index-1



Before You Begin

The Canon imagePROGRAF HDI Driver (hereafter referred to together as “HDI Driver”) is a special HDI (Heidi Device Interface) compatible printer driver for the Autodesk, Inc. software applications for AutoCAD and AutoCAD LT architecture (hereafter referred to together as “AutoCAD”). When you use the HDI driver you can set up the print job with the most appropriate settings for the media and print clear, sharp printouts of plans and diagrams created with AutoCAD.

■ Compatible Printers

Canon Large Format Printer W6400
Canon Large Format Printer W8400

■ Applicable AutoCAD Versions

AutoCAD 2000 / LT2000
AutoCAD 2000i / LT2000i
AutoCAD 2002 / LT2002
AutoCAD 2004 / LT2004
AutoCAD 2005 / LT2005

How to Use This Guide

■ Conventions

The following marks are used to alert you about safety, handling precautions and limitations, cautions, and other important information.



Important

Describes important points and limitations you should follow during operation. Read and obey this information to avoid problems caused by incorrect procedures.



Note

Provides helpful hints and tips for reference during operation. We recommend that you read and obey this information.

■ Button Notations

The following names are used for buttons in this guide.

- Buttons on the computer screen also appear in **bold** text.

Example: Click **OK**.
Click the **Set** button.

■ Trademarks

Canon, the Canon logo, and imagePROGRAF are trademarks or registered trademarks of CANON INC.

Microsoft® and Windows® are registered trademarks of the Microsoft Corporation in the United States and other countries.

Autodesk, AutoCAD, AutoCAD LT, and other Autodesk products are trademarks or registered trademarks of Autodesk, Inc. in the United States and other countries.

Any other company name and product name are company trademarks or registered trademarks.

■ A Request to Our Customers...

- Unauthorized transfer or duplication of all or any part of this document is prohibited.
- The content of this document is subject to change without notice.
- Every effort has been made to ensure that the information contained in this guide is correct. If any error or omission is found, contact us directly or an authorized Canon representative.
- Canon is not responsible for any damages, direct or indirect, arising from or related to the use of this software.

Copyright © 2005 CANON INC. ALL RIGHTS RESERVED.

Chapter 1 HDI Driver Installation

This section describes the operating environment and installation procedure of the HDI driver.

Operating Environment

The operating system where the HDI driver operates is different, depending on the AutoCAD version. Please read the table below.

AutoCAD Version	Operating System				
	Windows XP	Windows 2000	Windows Me	Windows 98	Windows NT4
AutoCAD 2000 AutoCAD LT2000	×	○	×	○	○
AutoCAD 2000i AutoCAD LT2000i	×	○	×	○	○
AutoCAD 2002 AutoCAD LT2002	○	○	○	○	○
AutoCAD 2004 AutoCAD LT2004	○	○	×	×	○
AutoCAD 2005 AutoCAD LT2005	○	○	×	×	×

Installation Procedure

There are two ways to install the HDI driver.

Installing with the Canon installer

Installing with the **Add-A-Plotter Wizard**



Important

If you are using AutoCAD 2000, you cannot install the HDI driver with the **Add-A-Plotter Wizard**.

■ Installing with the Canon Installer

The Canon installer opens and displays as soon as you start the User Software CD-ROM provided with the printer. Follow the procedure below to perform the installation from this screen.

1. Mount the User Software CD-ROM in the CD-ROM drive and start the Canon installer.

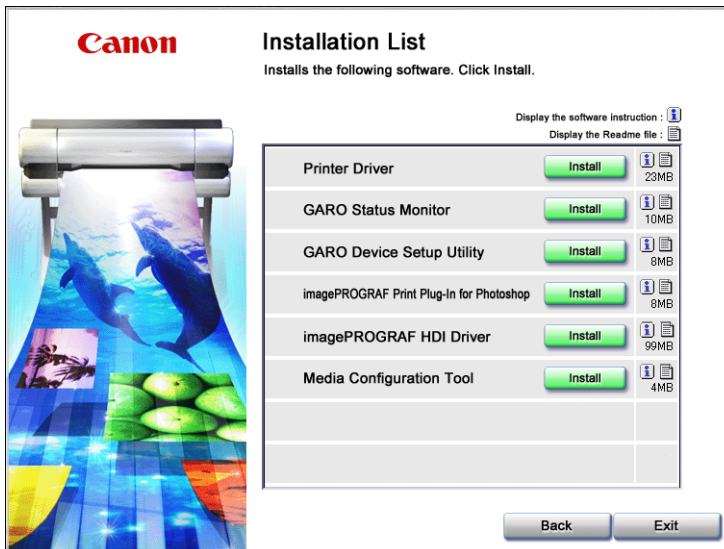




Note

If the Canon installer screen does not appear, click the **My Computer** icon on the desktop, open the **CD-ROM** icon, and then double-click **Setup.exe** to open the icon.

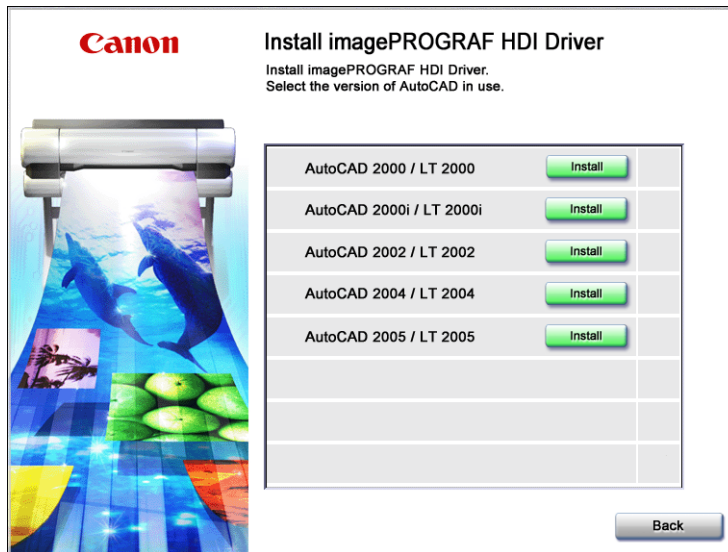
2. Select **Install Individual Software** in the Canon installer **Setup Menu**. The **Installation List** appears.



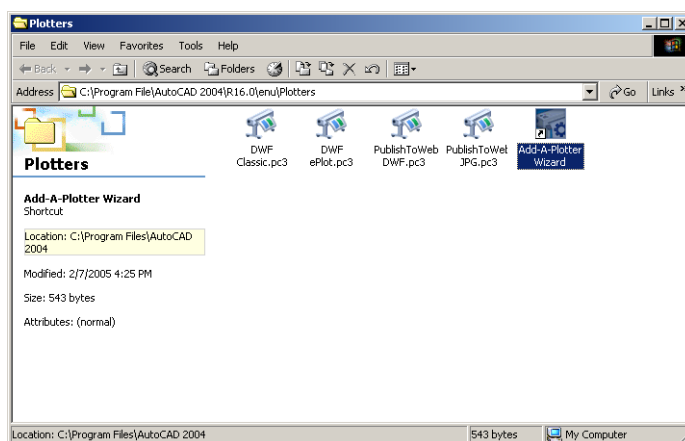
3. Click the **Install** button of the **imagePROGRAF HDI Driver** in the **Installation List**. The **License Agreement** screen appears.



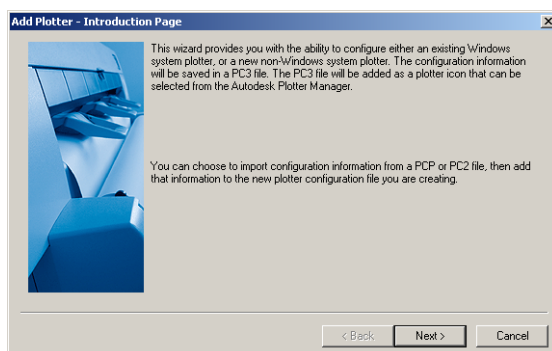
- Select **I accept the terms in the license agreement** then click the **Next** button.
The **Install imagePROGRAF HDI Driver** screen appears.



- Select the version number of your AutoCAD and click the **Install** button.
The HDI driver files are copied to the **Drv** folder where the AutoCAD program files are stored.
- After AutoCAD starts, select **Plotter Manager** from the **File** menu.
The **Plotters** window opens.



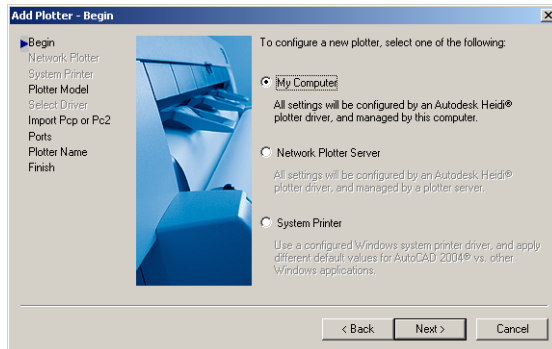
- Click the **Add-A-Plotter Wizard** icon.
The **Add Plotter - Introduction Page** screen opens.



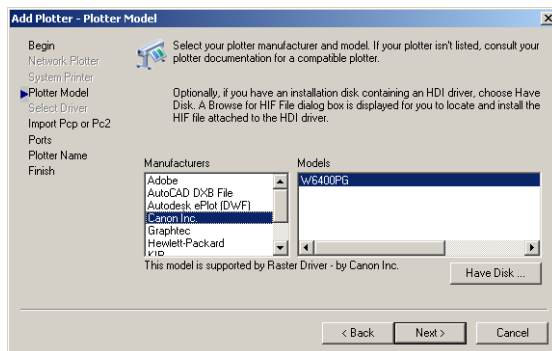
Note

To open the **Add-A-Plotter Wizard** you can also click **Start > Settings > Control Panel > Autodesk Plotter Manager >** and then double-click the **Add-A-Plotter Wizard** icon in the **Plotters** window.

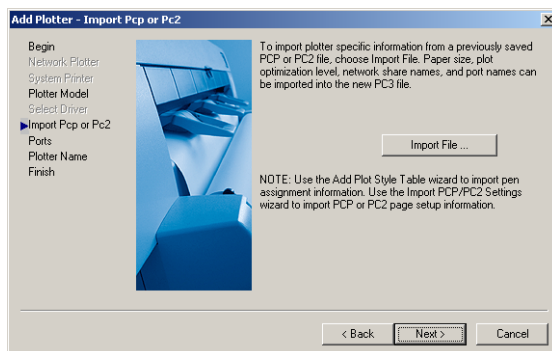
8. Check the displayed screen and then click the **Next** button.
The **Add Plotter - Begin** screen opens.



9. Select **My Computer** then click the **Next** button.
The **Add Plotter - Plotter Model** screen opens.



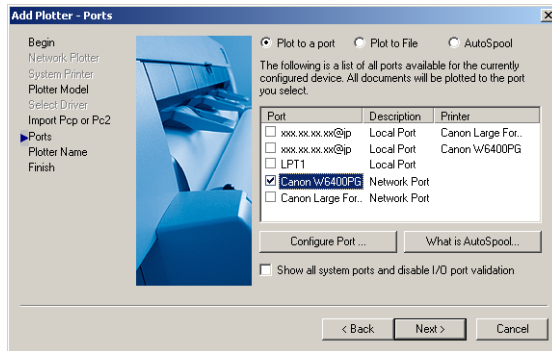
10. Make sure that **Canon, Inc.** is selected in the list of **Manufacturers**, and for the **Model** select the name of the printer that you want to install then click the **Next** button.
The **Add Plotter - Import Pcp or Pc2** screen opens.



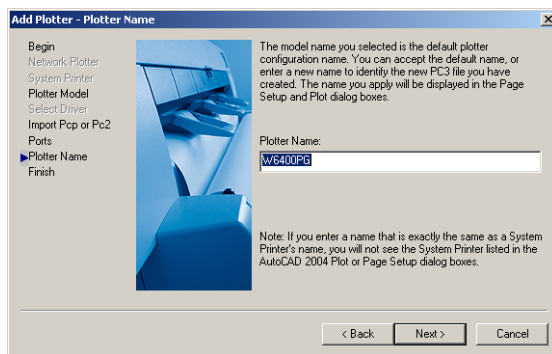
Note

If you want the installer to read plotter information from previously stored PCP or PC2 files, click the **Import File** button. If you do not want to read these files, just go to Step 11.

11. Click the **Next** button.
The **Add Plotter - Ports** screen opens.



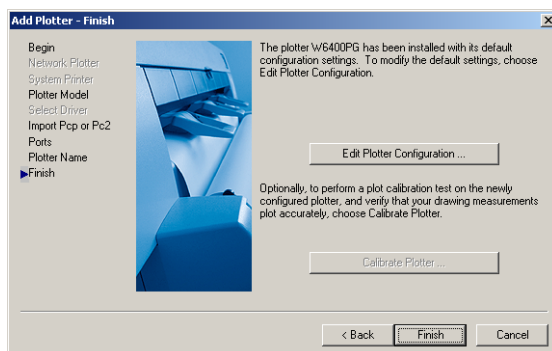
12. Make sure that **Plot to a port** is selected, select the port that you want to use for the plotter, then click the **Next** button.
The **Add Plotter - Plotter Name** screen opens.



Note

You can change the **Plotter Name** setting here, but you will normally leave it as it is and go to Step 13.

13. Click the **Next** button.
The **Add Plotter - Finish** screen opens.

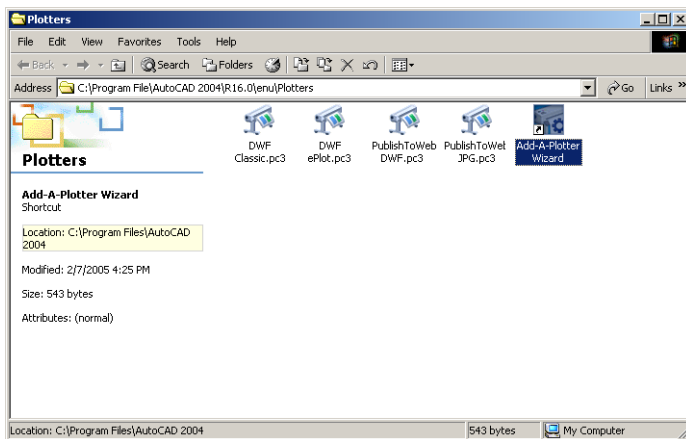


14. Click the **Finish** button.
This completes the installation of the HDI driver.
15. Clicking the **Finish** button closes the **Installation List** and **Setup Menu** and ejects the User Software CD-ROM from the CD-ROM drive.

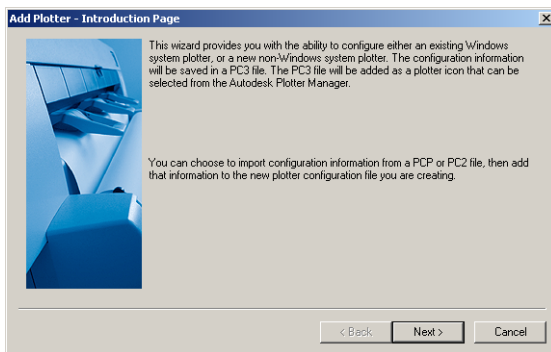
■ Installing with the Add-A-Plotter Wizard

Follow the procedure below to use the **Add-A-Plotter Wizard** to install the HDI driver without the Canon installer.

1. After AutoCAD starts, select **Plotter Manager** from the **File** menu.
The **Plotters** window opens.



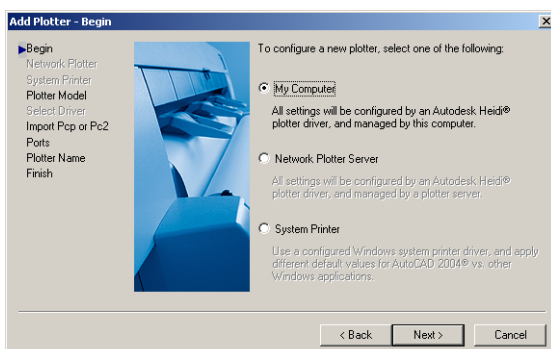
2. Click the **Add-A-Plotter Wizard** icon.
The **Add Plotter - Introduction Page** screen opens.



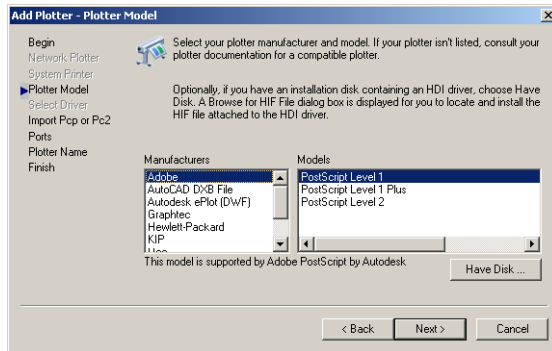
Note

To open the **Add-A-Plotter Wizard** you can also click **Start > Settings > Control Panel > Autodesk Plotter Manager >** and then click the **Add-A-Plotter Wizard** icon in the **Plotters** window.

3. Check the displayed screen and then click the **Next** button.
The **Add Plotter - Begin** screen opens.



4. Select **My Computer** then click the **Next** button.
The **Add Plotter - Plotter Model** screen opens.



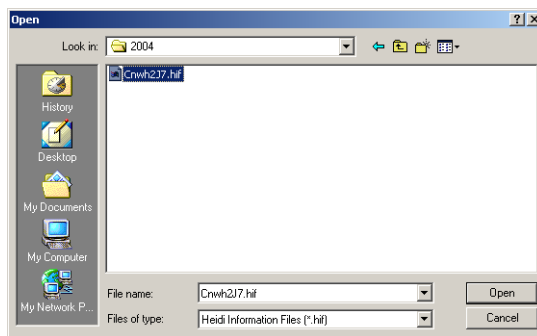
5. Mount the User Software CD-ROM in the CD-ROM drive.
6. On the **Add Plotter - Plotter Model** screen, click the **Have Disk** button.
The **Open** dialog box opens.
7. From the **Look in** box, select the CD-ROM drive, and then browse to the folder that holds the **hif** file.



Note

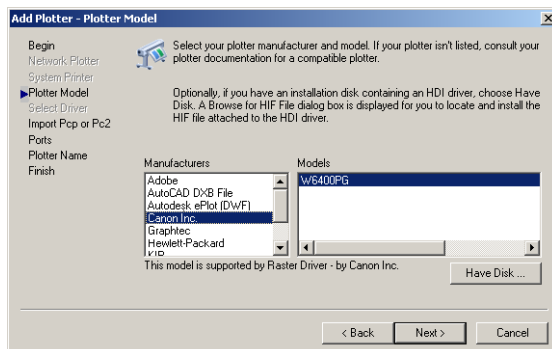
The **hif** format file is contained in the following folder.
 \English\HDI\2004 (AutoCAD Version 2004)

8. Select the **hif** file then click the **Open** button.

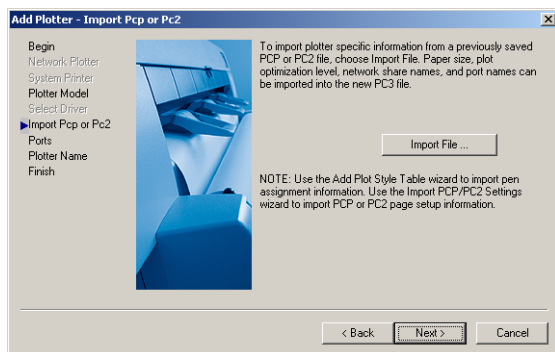


The display returns to the **Add Plotter - Plotter Model** screen.

9. Select **Canon Inc.** from the list of **Manufacturers**, select the name of the printer for **Model**, and then click the **Next** button.



The **Add Plotter - Import Pcp or Pc2** screen opens.

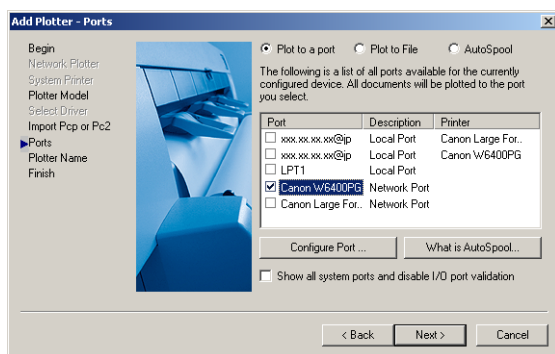


Note

If you want the installer to read plotter information from previously stored PCP or PC2 files, click the **Import File** button. If you do not want to read these files, just go to Step 10.

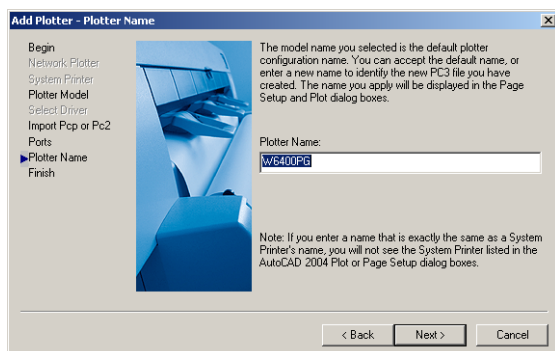
10. Click the **Next** button.

The **Add Plotter - Ports** screen opens.



11. Make sure that **Plot to a port** is selected, select the port that you want to use for the plotter, then click the **Next** button.

The **Add Plotter - Plotter Name** screen opens.



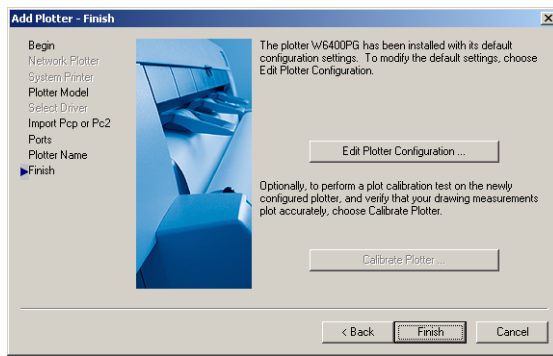
Note

You can change the **Plotter Name** setting here, but you will normally leave it as it is and go to Step 12.



12. Click the **Next** button.

The HDI driver files are copied to the **Drv** folder where the AutoCAD program files are stored, then the **Add Plotter - Finish** screen opens.



13. Click the **Finish** button.

This completes the installation of the HDI driver.

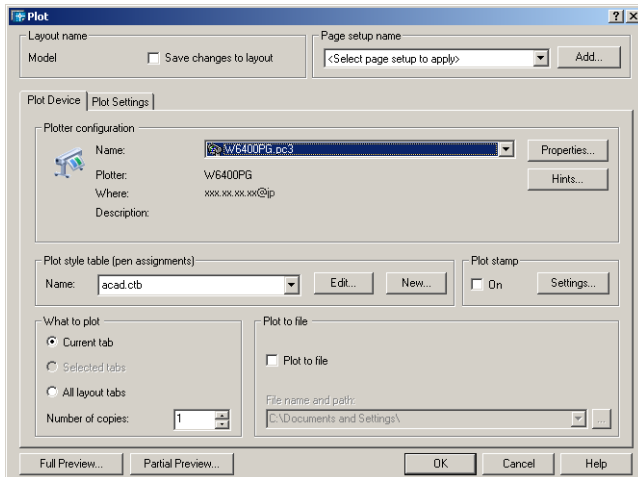
14. Remove the User Software CD-ROM from the CD-ROM drive.

Chapter 2 Printing

This section describes how to execute a print job with the HDI driver. The description below uses printing with the AutoCAD 2004 as an example.

Printing Procedure

1. Start AutoCAD and open the image file.
2. Select **Plot** from the **File** menu.
The **Plot** dialog box opens.



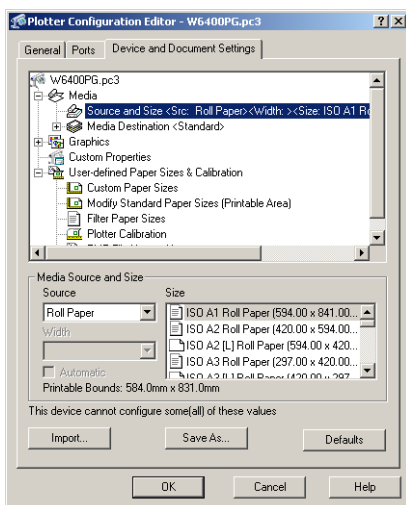
3. On the **Plot Device** sheet check the **Name** setting under **Plotter configuration** and confirm that **W6400PG** (the name of the printer you use) is displayed.



Note

- If any other printer name is selected, select the name of the printer that you want to use from the **Name** list.
- The names of the printers installed when the HDI driver was installed are in the **Name** list.

4. Click the **Properties** button.
The **Plotter Configuration Editor** dialog box opens.



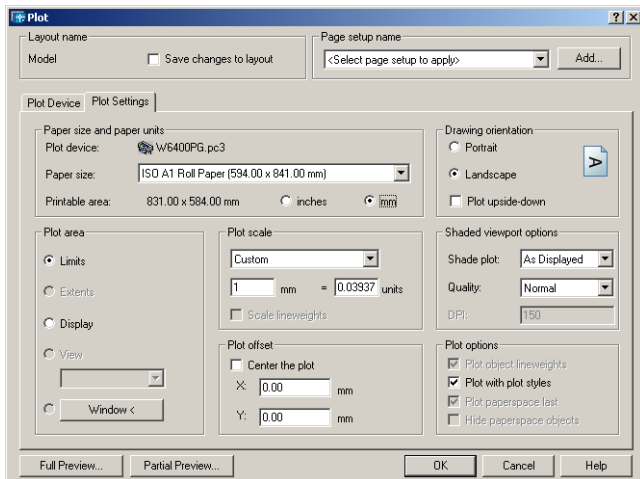
5. Perform the settings that you need for the print job.



Note

For more details about how to perform the settings in the **Plotter Configuration Editor** dialog box, please refer to Chapter 3, “Setting Up a Print Job” (p.3-1).

6. Click the **OK** button to close the **Plotter Configuration Editor** dialog box. The **Plot** dialog box opens.



Note

- The content of the settings done in the **Plotter Configuration Editor** dialog box are reflected in the **Paper size and paper units** settings on the **Plot Settings** sheet of the **Plot** dialog box.
- For more details about the **Plot** dialog box, please refer to the AutoCAD manual.

7. Perform the settings that you need on the **Plot Settings** and **Plot Device** sheets, then click the **OK** button. The print job begins.



Note

- If the output exceeds the number of pixels prescribed for the media, in order to prevent AutoCAD from hanging up during the print job a warning dialog box opens and asks if you want to lower the resolution or reduce the number of colors. If this occurs, click the **OK** button to cancel the print job and then lower the resolution or reduce the number of colors.
- Some media may not allow printing with certain resolution settings. If you have selected a resolution setting that cannot be used for printing, then a dialog box will open and prompt you to change the resolution. If this occurs, click the **OK** button to cancel the print job and then lower the resolution.
- A message from AutoCAD is displayed when printing starts. Press the **OK** button to execute the print job. This message display can be disabled with the **Options** setting in the AutoCAD **Tools** menu. For more details, please refer to the AutoCAD manual.

Chapter 3 Setting Up a Print Job

This section describes the HDI driver settings.

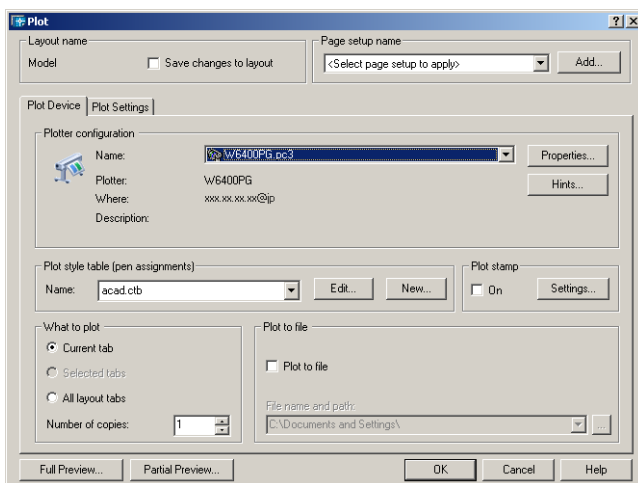
The HDI driver settings are done in the **Plotter Configuration Editor** dialog box.

Opening the Plotter Configuration Editor Dialog Box

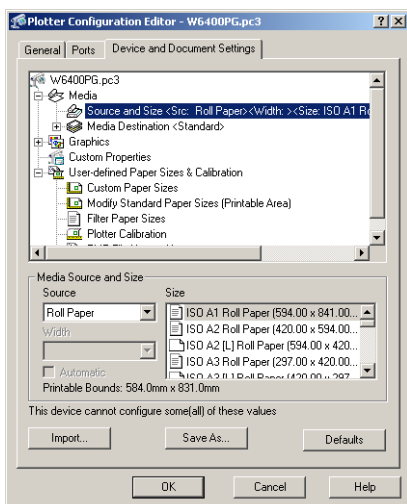
You can open the **Plotter Configuration Editor** dialog box from either the AutoCAD **File** menu or with the Windows **Start** menu.

■ Opening from the AutoCAD File Menu

1. Select **Plot** from the AutoCAD **File** menu.
The **Plot** dialog box opens.



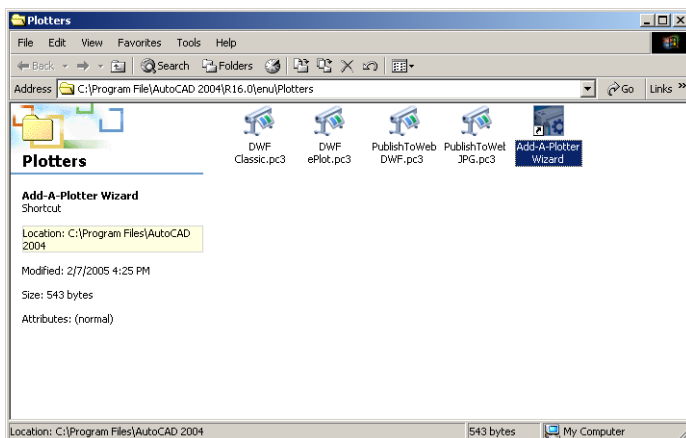
2. Check the **Name** setting under **Plotter configuration** and confirm that **W6400PG** (the name of the printer you use) is displayed for the name of the printer to be used.
3. Click the **Properties** button.
The **Plotter Configuration Editor** dialog box opens.



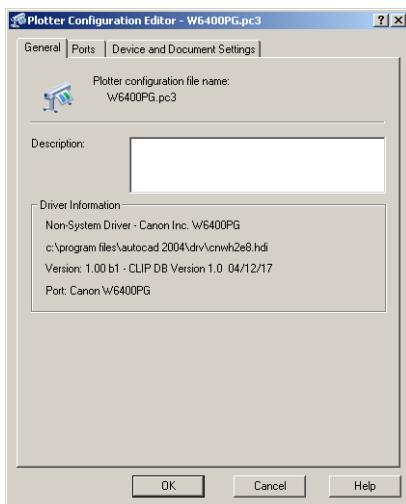
■ Opening from the Start Menu

1. Click the **Start** button then select **Settings > Control Panel**.
The **Control Panel** window opens.

2. Double-click the **Autodesk Plotter Manager** icon.
The **Plotters** window opens.



3. Double-click the **W6400PG** icon (the icon name is the name of the printer you use) to open.
The **Plotter Configuration Editor** dialog box opens.



Plotter Configuration Editor Dialog Box Functions

The **Plotter Configuration Editor** dialog box has three sheets. The **Plotter Configuration Editor** dialog box display can be manipulated by selecting the items on these sheets or in the Explorer tree.

This section describes how to perform the settings in the **Plotter Configuration Editor** dialog box.



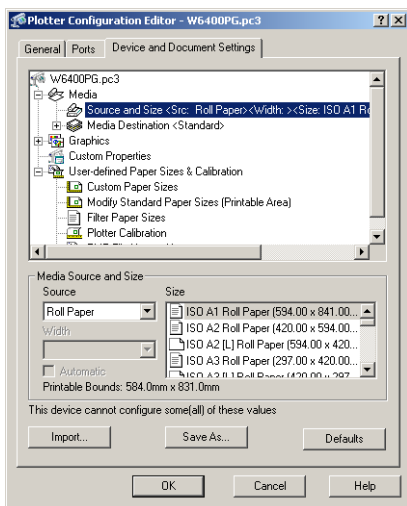
Note

For more details about the **General** sheet and the **Ports** sheet, please refer to the AutoCAD manual.

■ Device and Document Settings Sheet

Use this sheet to perform the main printing settings.

The settings for each item are shown in a tree structure on this sheet. When you select an item the screen display changes so you make changes for the **Resolution** and other graphic settings, the **Media Type**, **Color Matching** and **Custom Properties** settings, the **Drying Time** and **Roll Paper Margin for Safety** and other detailed media settings.



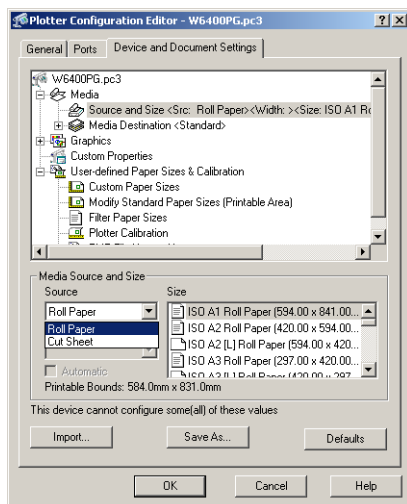
The procedures for setting each item are described below.

Media Source and Media Size Settings

Follow this procedure to select the media source (**Cut Sheet** or **Roll Paper**) and the media size.

1. Press the **Source and Size** button below **Media**.

The **Device and Document Settings** sheet opens and switches to the display that presents the media source and size settings.



2. From the **Source** list, select the media source.
3. From the **Size** list, select the media size.



Note

When you change the **Source** setting, the **Size** setting returns automatically to its default settings. Every time you adjust the **Source** setting, you should also re-adjust the **Size** setting.

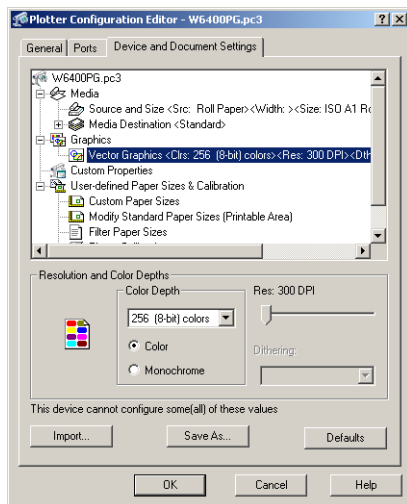
4. Click the **OK** button.

Graphics Settings

Use these settings to adjust the print mode and resolution.

1. Click the **Vector Graphics** below **Graphics**.

The Device and Document Settings sheet opens and switches to the display that presents the graphics settings.



2. Select either **Color** or **Monochrome**.
3. Select a setting for **Color Depth** from the list.

Color Depth presents the following items for selection.

Mode	Setting Details
Color	16777216 (24-bit) colors
	256 (8-bit) colors
Monochrome	2-Level grayscale
	256-Level grayscale
	16777216-Level grayscale

4. Move the **Res.** slider to adjust the settings.

Res. presents the following items for selection.

Resolution	Setting Details
300 dpi	Print speed is faster due to the lower resolution setting. Printing time is shorter and not as much computer memory is required.
600 dpi	Print speed is slower due to the higher resolution setting. Achieves the best printing results, but printing time is longer and a large amount of computer memory is required.

5. Click the **OK** button.

Custom Properties Settings

Use the **Custom Properties** settings to perform special settings for the HDI driver.

For more details, please refer to “Opening the Custom Properties Dialog Box” (p.3-5) and “Custom Properties Dialog Box Functions” (p.3-5).

Opening the Custom Properties Dialog Box

In the **Custom Properties** dialog box you can perform the settings for the **Media Type**, **Color Matching**, **Brightness**, and other settings.

Follow the procedure below to open the Custom Properties dialog box.

1. In the **Plotter Configuration Editor** dialog box, select and open the **Device and Document Settings** sheet.

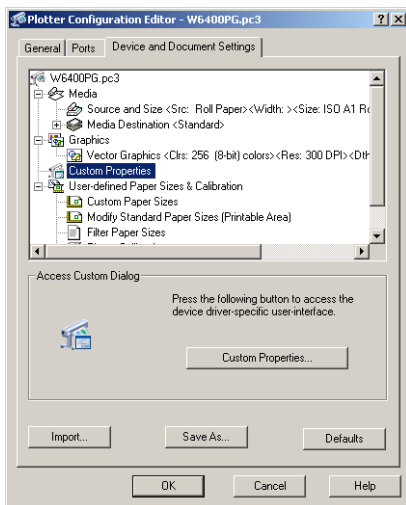


Note

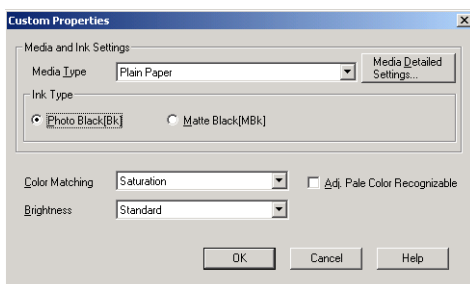
For more details about how to open the **Plotter Configuration Editor** dialog box, please refer to Chapter 3, “Opening the Plotter Configuration Editor Dialog Box” (p.3-1).

2. Click **Custom Properties**.

The **Device and Document Settings** sheet opens and switches to the display that presents the custom properties settings.

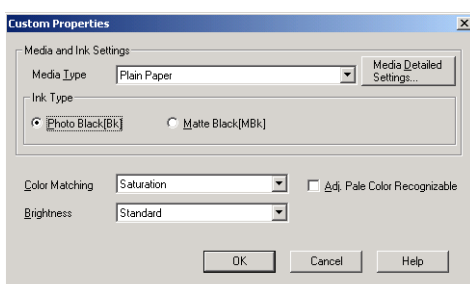


3. Click the **Custom Properties** button.
The **Custom Properties** dialog box opens.



Custom Properties Dialog Box Functions

This section describes how to perform the settings in the **Custom Properties** dialog box.



■ Selecting the Media Type and Ink Type

Use these settings to set the media and ink type.

1. Select the media type from the **Media Type** list under **Media and Ink Settings**.



Note

- Here is a list of the types of media that can be selected. Plain Paper, Fine Art, Coated Paper, Glossy Photo Paper, Synthetic Paper, and others
- The type of media that you can use for printing depends on the type of black ink in use.
- For the **Media Type** you must select the setting for the media actually loaded in the printer. If the **Media Type** selection is not the same as the media actually loaded in the printer, the print results will not be correct.
- Click the **Media Detailed Settings** button to open the **Media Detailed Settings** dialog box. In this box you can perform the settings for the ink drying time and other items. For more details, please refer to “Media Detailed Settings” (p.3-7).

2. Use this setting to set the **Ink Type**.
Ink Type presents the following items for selection.

Ink Type	Setting Details
Photo Black (Bk)	This selection is best suited for printing photographs due to its superior color reproduction capabilities.
Matte Black (MBk)	Due to its high density, this ink is ideal for printing line drawings, or any type of document created with a CAD system.



Important

- The type of media that can be selected for printing depends on the ink type specification.
- If the black ink selected for **Ink Type** does not match the ink type of the tank actually loaded in the printer, the printer will issue an alert on the printer operation panel. You must then decide whether to execute or stop the print job.
- To achieve the best possible results in printing, stop the print job when the message appears on the operation panel, and then perform the settings so the **Ink Type** selection and type of black ink tank in the printer are the same.

3. Click the **OK** button.

■ Color Matching and Brightness Settings

Adjust **Color Matching** and **Brightness** to achieve the best color tones in printed drawings.

1. From the **Color Matching** list select the color matching method.
Color Matching presents these following items for selection.

Color Matching	Setting Details
Saturation	This item does color matching with priority on saturation.
Perceptual (Photographic)	This item does color matching with priority on color tones to reproduce the best results in printing photographic images.
Colorimetric	This item places priority on reducing the differences between the color tones you seen on the computer screen and those you see in the printout, so the printout more closely resemble the colors of the original (a color logo, for example).

- Select a setting from the **Brightness** list.
Brightness presents the following items for selection.

Brightness	Setting Details
Dark	Prints a printout much darker than normal.
Slightly Dark	Prints a printout slightly darker than normal.
Standard	Prints the printout with normal brightness.
Slightly Bright	Prints a printout slightly brighter than normal.
Light	Prints a printout much brighter than normal.

- Select **Adj. Pale Color Recognizable** as needed.



Note

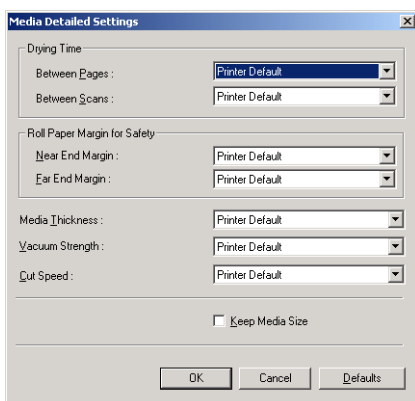
When **Adj. Pale Color Recognizable** is selected, yellow or cyan lines or other portions of images that are difficult to see when printed in white space can become easier to see.

- Click the **OK** button.

■ Media Detailed Settings

You can use the printer operation panel to perform suitable settings for ink drying time of each media and other features. You can also so some of these settings in the **Media Detailed Settings** dialog box. If the appearance of your printouts is not satisfactory, perform the settings on this screen to make adjustments and improve the printing results.

To open the **Media Detailed Settings** dialog box, in the **Custom Properties** dialog box click the **Media Detailed Settings** button.



Note

The settings in the **Media Detailed Settings** dialog box are temporary; after the print job finishes the settings of the printer operation panel are restored.

The procedures for performing the settings for each item in the **Media Detailed Settings** dialog box are described below.

Drying Time

You can set the time that the printer waits before it ejects another sheet (time between pages), or the time between the printer waits each time it prints a line (time between scans) for each type of media.

- If the ink on the media is difficult to dry, in the **Media Detailed Settings** dialog box select a time for from the **Between Pages** list under **Drying Time** to set the drying time between pages.

Between Pages presents the following items for selection.

Between Pages	Setting Details
Printer Default	This item resets the value to the printer default settings.
None	Cancels the ink drying time.
30 sec., 1 min., 3 min., 5 min., 10 min., 30 min., 60 min.	After the print job finishes, the printer waits for this time to elapse and then ejects the printed sheet. If the ink on the printed media is difficult to dry, increase the time with a higher setting.

- If the ink is running or smearing on the printed output, from the **Between Scans** list under **Drying Time** select a time for the ink to dry between scans during printing.

Between Scans presents the following items for selection.

Between Scans	Setting Details
Printer Default	This item resets the value to the printer default settings.
None	Cancels the ink drying time.
1 sec., 3 sec., 5 sec., 7 sec., 9 sec.	Increase this setting if you see stains on the printed sheets or blurred colors in printouts done with borderless printing.

- Click the **OK** button.

Roll Paper Margin for Safety

If the printed image appears rough or scratched by the printhead, adjust the settings for **Near End Margin** and **Far End Margin**.

- In the **Media Detailed Settings** dialog box select a setting from the **Near End Margin** list under **Roll Paper Margin for Safety**.

Near End Margin presents the following items for selection.

Near End Margin	Setting Details
Printer Default	This item resets the value to the printer default settings.
5 mm	Select this setting when you are not experiencing problems. Prints a standard size margin.
20 mm	Select this setting if the media has a strong tendency to curl, causing the printhead to scratch its surface. This setting sets the margin about 15 mm (in the feed direction) longer than the standard margin for the media size.

- In the **Media Detailed Settings** dialog box, select a setting from the **Far End Margin** list under **Roll Paper Margin for Safety**.

Far End Margin presents the following items for selection.

Far End Margin	Setting Details
Printer Default	This item resets the value to the printer default settings.
5 mm	Select this setting when you are not experiencing problems. Prints a standard size margin.
10 mm	Select this item when the cutter is fouling the printout as a result of dry ink that adheres to the cutter after it has cut sheets where printing was done as far as the trailing edge. This setting sets the margin about 5 mm (in the feed direction) longer than the standard margin for the media size.



3. Click the **OK** button.

**Important**

If you make the margin (white space) too small, this could disturb the print image or cause the printhead to scour the surface of some types of media. If the printhead scours the surface of the media, adjust the height of the printhead.

Media Thickness

Use these settings to adjust **Media Thickness** for the type of media and whether it is thin or thick.

1. Select a thickness setting from the **Media Thickness** list in the **Media Detailed Settings** dialog box.

Media Thickness presents the following items for selection.

Media Thickness	Setting Details
Printer Default	This item resets the value to the printer default settings.
Thick	Select this item when thick paper is loaded in the printer, or when the printhead is scouring the surface of the media.
Standard	Select this item when printing on media or paper of normal thickness without any problem.
Thin	Select this item when printing on thin paper, or the printout is not clear and distinct.

2. Click the **OK** button.

Vacuum Strength

Select a setting for the amount of suction applied to the media.

1. Select a setting from the **Vacuum Strength** list in the **Vacuum Strength** dialog box.

Vacuum Strength presents the following items for selection.

Vacuum Strength	Setting Details
Printer Default	This item resets the value to the printer default settings.
Strongest	Select this setting if the paper is floating off the path with the "Strong" setting selected.
Strong	Select this setting when curl in the media is causing it to float off the path.
Standard	Select this setting when you are not experiencing problems.
Weak	Select this setting when printing on thin paper and the quality at the corners of the sheet is poor.

2. Click the **OK** button.

**Cut Speed**

Select a setting for the automatic cutting speed. Adjust this setting when auto cutting is not cutting cleanly.

1. Select a setting from the **Cut Speed** list in the **Media Detailed Settings** dialog box.

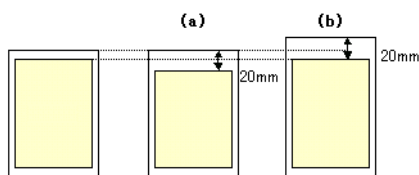
Cut Speed presents the following items for selection.

Cut Speed	Setting Details
Printer Default	This item resets the value to the printer default settings.
Standard	Select this setting when you are not experiencing problems.
Fast	Select this setting if cutting with the "Standard" setting is not clean.

2. Click the **OK** button.

Keep Media Size

The margin selected with this checkbox with **Roll Paper for Margin Safety**, sets whether the setting is done inside or outside the margin setting of the printer driver.



Keep Media Size	Setting Details
(a) On	The margins settings are taken from inside the specified media. The external size of the media is preserved and the printing area becomes smaller so part of the image may be cut off at the bottom. To select this setting, click the box to mark it with a checkmark.
(b) Off	The margins settings are taken from outside the specified media. The print area is preserved and the margins and external dimensions become larger. To select this setting, click the box to remove the checkmark.



Index

A

Add Plotter - Begin, 1-4, 1-6
Add Plotter - Finish, 1-5, 1-9
Add Plotter - Import Pcp or Pc2, 1-4, 1-8
Add Plotter - Introduction Page, 1-3, 1-6
Add Plotter - Plotter Model, 1-4, 1-7
Add Plotter - Plotter Name, 1-5, 1-8
Add Plotter - Ports, 1-5, 1-8
Add-A-Plotter Wizard, 1-3, 1-6
Autodesk Plotter Manager, 1-3, 1-6

B

Between Pages, 3-7
Between Scans, 3-8
Brightness, 3-6

C

Canon installer, 1-1
Color, 3-4
Color Depth, 3-4
Color Matching, 3-6
Colorimetric, 3-6
Custom Properties dialog box, 3-5
Cut Speed, 3-10

D

Device and Document Settings Sheet, 3-2, 3-5
Drv folder, 1-3
Drying Time, 3-7

G

General sheet, 3-2
Graphics, 3-4

H

hanging up, 2-2
HDI Driver Installation, 1-1
hif file, 1-7

I

ink type, 3-6
Installation Procedure, 1-1

M

Manufacturers, 1-4, 1-7
Matte Black (MBk), 3-6
Media Detailed Settings, 3-7
Media Detailed Settings dialog box, 3-7, 3-9
Media Thickness, 3-9
Media Type, 3-6
Model, 1-4, 1-7
Monochrome, 3-4

N

number of colors, 2-2

O

Operating Environment, 1-1

P

Paper size and Paper units, 2-2
Perceptual, 3-6
Photo Black (Bk), 3-6
Plot, 2-1
Plot Device sheets, 2-2
Plot Settings sheet, 2-2
Plotter configuration, 2-1, 3-1
Plotter Configuration Editor dialog box, 2-1, 3-1, 3-2, 3-5
Plotter Manager, 1-3, 1-6, 3-2
Plotter Name, 1-5, 1-8
Plotters window, 1-3, 1-6, 3-2
Ports sheet, 3-2
Properties, 2-1

S

Saturation, 3-6
Size, 3-3
Source, 3-3
Source and Size, 3-3

T

the number of pixels, 2-2

V

Vacuum Strength, 3-9
Vector Graphics, 3-4