

Canon



HR10

DVD Camcorder

Item Code: 2075B001
Available in August 2007

The Beauty of High Definition, the Convenience of DVD

The name Canon has always meant photographic and broadcast television cameras with optical excellence, advanced image processing, superb performance, and the latest in technological advancements. Canon's new High Definition video camcorders are no exception.

The compact Canon HR10 delivers high definition technology with the convenience of DVD, incorporating the latest AVCHD (Advanced Video Codec High Definition) format. A host of advanced features are joined with superb image reproduction in the world's smallest AVCHD camcorder,* allowing you to create stunning HD to complete your high definition home theater experience.

Canon's own Full HD CMOS sensor, advanced DIGIC DV II image processor, Genuine Canon 10x HD video zoom lens and new 2.7" Widescreen Multi-Angle Vivid LCD are but a few of the tools at your fingertips in the HR10, along with many other easy-to-use features which will make the HR10 the choice of the sophisticated shooter.

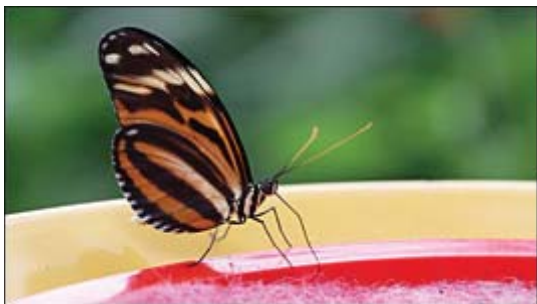
*As of May 7, 2007

Canon HR10 can capture both standard definition and high definition footage. High definition footage in the AVCHD format can be finalized in camera or copied onto DVD media with included software. However, DVD media containing AVCHD footage should only be used in AVCHD compatible players otherwise the DVD player may fail to eject the media and may erase its contents without warning.

"AVCHD" and the "AVCHD" logo are trademarks of Matsushita Electric Industrial Co., Ltd. and Sony Corporation.

Features

AVCHD DVD in a Compact Size



AVCHD™

The HR10 is Canon's first AVCHD (Advanced Video Codec High Definition) DVD camcorder. AVCHD uses an MPEG-4 AVC (H.264) video codec, recording true 1080 High Definition resolution video. An advantage of the AVCHD format is that it captures twice as much video using less storage onto DVDs which play in AVCHD compatible Blu-ray disc players. Making this new technology even more convenient to use is the HR10's compact size. Measuring only 2.6" wide, 3.7" high and 5.2" deep, it's the world smallest AVCHD Format DVD Camcorder*.

Added to the HR10's handy size is the convenience of shooting high definition on DVD. No more fear of taping over precious moments by accident, since you can only record onto a blank section of the DVD. True random access on a DVD means you can review your footage quickly and easily, without waiting for tape rewinding or fast forwarding.

The ease of DVD and the stunning images of Canon High Definition are yours in the HR10.

* As of May 7, 2007

Canon HR10 can capture both standard definition and high definition footage. High definition footage in the AVCHD format can be finalized in camera or copied onto DVD media with included software. However, DVD media containing AVCHD footage should only be used in AVCHD compatible players otherwise the DVD player may fail to eject the media and may erase its contents without warning.

"AVCHD" and the "AVCHD" logo are trademarks of Matsushita Electric Industrial Co., Ltd. and Sony Corporation.



Full HD CMOS Sensor (1920x1080)



The HR10 captures 1920x1080 High Definition video through its Canon designed and manufactured CMOS image sensor, similar to the CMOS image sensors in Canon's EOS Series Digital SLR cameras.

Compared to a CCD, the HR10's CMOS's high color resolution and advanced color reproduction gives brilliant results. It is also unique in featuring Canon's proprietary noise reduction technologies for crisp, sharp images. Low noise technology also means that even in dimly lit scenes, the signal from each pixel is as pure as possible, with minimal noise or other aberrations. It's the ideal sensor for HD.



The HR10 uses an RGB Primary Color Filter with Bayer Placement Pattern that separates light into red, green and blue color components. This results in vibrant images with deep, rich, accurate color and natural-looking tones similar to what you'd obtain from 3CCD camcorders. In addition, the Bayer Placement Pattern delivers sharp high definition images with true-to-life color reproduction. As an added benefit, the CMOS sensor provides outstanding image capture in low light conditions.



Canon 10x HD Video Zoom Lens



10x/200x
OPTICAL ZOOM / DIGITAL ZOOM

 **HD Video Lens**

Since 1934, Canon has been producing exceptional photographic lenses that are synonymous with unsurpassed optical performance. Because of Genuine Canon Optics, every Canon broadcast lens, 35mm film camera, digital camera and camcorder assures brilliant optical quality -- and the HR10 is no exception.

The HR10 comes with an outstanding High Definition video lens -- a 10x HD Genuine Canon zoom. It's the lens you need to record long shots of your child on the soccer field, wide shots of beautiful landscapes, and everything in-between. And because it comes with three pre-set zoom speeds, you always get smooth, steady, professional looking zoom shots.



Super Spectra Coating technology results in images with minimal flare and ghosting. Plus, the new lens' aspheric design reduces aberration and increases resolution, ensuring crisp, sharp video and enhancing the HD image quality. Not only that, but a new gradation neutral density (ND) system gives you better exposures in bright shooting situations.

In addition, for those times when you need to get a particular shot from a very long distance, this flexible lens also has a 200x digital zoom.

DIGIC DV II



DIGIC DV II is the next generation of Canon's exclusive DIGIC DV signal processing technology. Designed specifically for HD, DIGIC DV II ensures optimal image quality. It also ensures optimal image quality for still images, even though video and still images have different color requirements. DIGIC DV II is just another one of Canon's advanced technologies that make the HR10 an exceptional performer.

Thanks to DIGIC DV II image processing, the HR10 produces video with improved color reproduction -- especially in skin tones, and dark and light scenes. It also uses a hybrid noise reduction system that employs two types of noise reduction -- for high definition images that are crystal clear.



Plus, DIGIC DV II features improved continuous shooting of digital photographs with the HR10. You can shoot five (3.1 Megapixel) still images per second, and enjoy faster processing of your images to your memory card (1.4x normal card; 2.5x Hi Speed card). It also helps lower power consumption for longer battery life.

SuperRange Optical Image Stabilization



The high-resolution images of High Definition video demand a steady hand. It's easier to get those clear, steady images with the HR10, thanks to Canon's innovative SuperRange Optical Image Stabilization. It combines gyro- and image-sensors to give image stabilization through a wider range of camera motions. Some image stabilization systems correct one type of camera motion or vibration better than another. But Canon's SuperRange OIS corrects for a wide range of camcorder motion: the fast vibration you'd experience while recording from a moving car; the medium-speed motion of hand-held recording; and the slower motion of body sway. No matter what you're recording and how you're recording it, the HR10's stabilization design corrects camcorder shake instantly. SuperRange OIS also delivers steady images when shooting at long focal lengths.

In addition, optical stabilization keeps your shot steady without a loss in image quality -- something that can't be said for electronic image stabilization. And image stabilization isn't just for video; you can even use it for taking sharper, clearer digital photographs with your HR10. Thanks to Canon's expertise, it's easy to eliminate one of the telltale signs of amateur video and photography.



Instant AF (Auto Focus)



Another critical objective when shooting in High Definition is achieving a very sharp focus. The HR10 camcorder features Canon's revolutionary Instant AF focusing system which offers a dramatic improvement in auto focus speed and accuracy (compared to traditional auto focus systems). The Instant AF feature uses an external sensor, in combination with Canon's auto focus system, to help significantly decrease the time it takes to find focus, even in low light conditions. This system achieves focus instantaneously, reducing focus "hunting." The benefits of Instant AF are especially seen in high brightness and night shooting situations. With Instant AF, it's possible to capture fast, accurate focusing, even when following a moving subject.

Superb Shooting Control

2.7" Multi-Angle Vivid Widescreen LCD



The 2.7" Multi-Angle Vivid Widescreen LCD on the HR10 lets you see more of what your camcorder is recording. Using a hard coat AR surface and improved color reproduction, the scene in the viewfinder is more accurate to what you're capturing in the camcorder. An added benefit is the wider range of viewing angle possible with this new LCD screen. With less glare and deeper contrasts, groups of people can gather around it and see the image displayed more clearly than ever before.



Standard LCD Display



HR10 Multi-Angle Vivid LCD

Variable Zoom Speed Control

Another sure sign of amateur video is the unsteady zoom shot. But with the HR10's zoom control, you simply select one of three pre-set zoom speeds for smooth, steady, professional looking zooms.

Level and Grid Markers

With the Level Marker feature, it's easy to keep your camera level for more professional looking video. Line up any horizontal lines in your shot -- such as the horizon -- to the marker and you can be sure your camcorder is level.

The HR10's Grid Marker feature lets you compose your shot accurately, according to the grid in your viewfinder. You can even choose from two different colors for the grid. This ensures that you see the grid, no matter what the background color of your shot is.



Program AE Mode



For the best exposure for various situations, the HR10's Program AE mode will automatically adjust the settings to compensate for the conditions and subject. Choose from Portrait, Sports, Night, Snow, Beach, Sunset, Spotlight and Fireworks. You won't have to guess if you're capturing all the action just the way you want it, the HR10 will do it for you.

Quick Start

Never miss a quickly unfolding shot again. Push the Quick Start button between shots -it places the HR10 in standby mode. When the action starts, push the Quick Start button again to begin recording in less than one second. You'll also help extend your battery life over leaving the camcorder in regular recording mode.



Low Light Performance



Some of the most magical shots are taken at the end of the day or long after the sun has set. You won't miss any of them, thanks to the HR10's bright built-in Ultra Video Light. The light lets you shoot subjects in color in low light up to 4.9 feet away. So, whether it's a shot of a sleeping baby, or a dramatic skyline at night, the HR10 captures all the moments you want to record.

24p Cinema Mode



Normal Recording



24p Cinema Mode

24p Cinema Mode enables all aspiring moviemakers to achieve a professional "film-look." You can change the camcorder's frame rate to 24p, which provides the same frame rate as movie film. In addition, you can use the HR10's CINE setting, which changes the color and tonal characteristics, evoking the look and feel of a movie shown in a theater. For added flexibility, these settings can be used together or independently.



Stunning Digital Photography

The HR10 has many advanced photo features which make it a camera that rivals other state-of-the-art digital cameras. You get the best of both video and photos.

3.1 Megapixel Photos



**3.1 MEGA
PIXELS**
STILL IMAGE RECORDING

The same Canon CMOS image sensor that ensures sharp, vivid HD video also gives you brilliant digital photographs. Like the CMOS image sensors in Canon's EOS Series digital SLR cameras, the HR10's image sensor results in outstanding digital photographs. It gives an impressive resolution of 1920 x 1440 for sharp, crisp still images.

DIGIC DV II



DIGIC DV II features improved continuous shooting of digital photographs with the HR10. You can shoot 5 (3.1 Megapixel) still images per second, and enjoy faster processing of your images to your memory card (1.4x normal card; 2.5x Hi Speed card).

Focus Features

Auto Intelligent Auto Focus (AiAF) ensures sharp images and gives creative flexibility. Even when your subject isn't in the center of the frame, the HR10's 9 Point AiAF will automatically select from 9 metering frames on the screen to help bring images into sharp focus.



Instant
AF

Since it is critical to achieve very sharp focus when shooting in High Definition, the HR10 camcorder features Canon's revolutionary Instant AF focusing system. It offers a dramatic improvement in auto focus speed and accuracy (compared to traditional auto focus systems). The Instant AF feature uses an external sensor, in combination with Canon's auto focus system, to help significantly decrease the time it takes to find focus, even in low light conditions. This new system achieves focus instantaneously, reducing focus "hunting." The benefits of Instant AF are especially seen in high brightness, and night shooting situations. It's even possible to capture fast, accurate focusing, even when following a moving subject.

And because a properly focused subject is more critical than ever with HD, the HR10 also features Focus Assist. This helps in capturing your subject in razor sharp focus. (When you start recording, this assistance is automatically cancelled.)

Auto Exposure Modes

Like any good digital still camera, the HR10 lets you choose from a range of exposure modes. Auto mode automatically sets the exposure, letting you concentrate on your subject. AV (aperture priority) mode lets you control depth of field by letting you choose the aperture. TV (shutter priority) mode lets you select the shutter speed for sharp, action shots. In P (program) mode, the camcorder adjusts camera settings automatically.



Program AE Mode



Your life happens everywhere, so the HR10 gives you settings that automatically result in the best exposure settings for different conditions and different subjects.

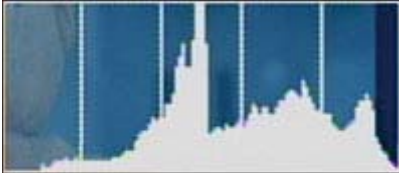
Portrait mode ensures shallow depth of field for a pleasing background to your shots of friends and family. Sports mode stops the action with faster shutter speeds. Night mode is designed to give you great shots after the sun goes down. Snow and Beach modes compensate for bright surroundings and give you the proper exposure on your subject. Sunset mode results in vibrant, well-exposed colors for one of the toughest subjects to capture. Use Spotlight mode when your child is on stage and in the spotlight -- literally -- and you want to make sure the exposure is right for them. And, Fireworks mode records brilliant images of another tough subject: the holiday fireworks display.

Simultaneous Photo Recording

With the HR10, you can record HD video and capture a 2 Megapixel photo to a memory card -- simultaneously. Simply press the photo button and you've got an e-mail ready digital photo to share with friends and family.



Histogram Display



For the advanced digital photographer, the HR10 comes with a Histogram Display -- a feature found in Canon's line of digital SLR cameras. The display allows you to see the brightness information of your still images, so you can adjust your exposures as you shoot.

Level and Grid Markers

With the Level Marker feature, it's easy to keep your camera level for more professional looking photographs. Line up any horizontal lines in your shot -- such as the horizon -- to the marker and you can be sure your camcorder is level.

The HR10's Grid Marker feature lets you compose your shot accurately, according to the grid in your viewfinder. You can even choose from two different colors for the grid. This ensures that you see the grid, no matter what the background color of your shot is.



Still Capture from Disc

The versatile HR10 even lets you capture a still image from an already recorded movie. While playing the movie in your camcorder, simply press the photo button to capture a 2.07 Megapixel 16:9 still frame on a miniSD™ card. It's another way the HR10 lets you enjoy and share your precious memories.

Built-in Flash



BUILT-IN 
FLASH

Your HR10's built-in flash lets you capture superb photos indoors and in low light conditions. The HR10 also features red eye reduction.

HDMI Terminal



HDMI™
HIGH DEFINITION MULTIMEDIA INTERFACE

With the HR10, sharing your High Definition video on your HD television is easier than ever. From the HDMI (High-Definition Multimedia Interface) terminal, only a single cable connects your camcorder to your TV for the highest quality playback (video and audio) of your video from a pure digital signal.

Share Your Photos

Your HR10 comes with features that make it simple to share your still photos.

Print/Share



Print/Share turns your HR10 into a photo lab in the palm of your hand. Simply connect your camcorder directly to select Canon printers or any PictBridge-compatible printer with the supplied USB cable. Then, with a simple touch of the Print/Share button, print directly from your HR10 without going through a computer.

Print/Share also makes it easy to transfer your still images to your computer. Simply connect your HR10 and your computer, press the Print/Share button and your photos are downloaded to your computer.

miniSD™ Memory Card Compatible

The HR10 makes it easy to store digital photos on an optional miniSD Memory Card. Popularly used in today's newest cell phones and half the size of a standard SD card, the miniSD Card offers the benefit of high-capacity storage in a very small size.

Bundled Software

The Canon HR10 High Definition Camcorder is bundled with a powerful software suite from Corel. You can easily perform a variety of functions, including AVCHD Editing in which you can trim, reorder, and combine scenes, as well as add music, titles, and transitions. When finished you can burn your edited video onto either a full size AVCHD DVD or Standard Definition DVD. This software also allows you to play your AVCHD DVD movies on your computer and also will let you share copies of your movie with friends and family through HD Disc to HD Disc Copying. Transfer and store your movie onto your computer's hard drive with the software and easily convert your High Definition video to Standard Definition video as well.

*The bundled application is compatible with Windows XP and Windows Vista

Additional Features

- **Built-in Electronic Lens Cover** means you never have to go looking for your lens cover again. Turn your camcorder on and the lens cover automatically opens. Turn it off, and the cover closes.
- **USB 2.0 Hi-Speed Terminal** for ultra-fast transfer of movies and photos.
- **Wireless Remote Control** lets you operate your HR10 from a distance, so you don't have to be left out of the picture..
- **1 Year Parts And Labor Limited Warranty** provides protection long after other manufacturers' warranties expire.

Specifications

Digital Video

Power Consumption	Approx. 3.6W-6.4W
Image Sensor	1/2.7" CMOS Sensor, RGB Primary Color Filter
Total Pixels	Approx. 2.96 Megapixels
Effective Pixels	HD/SD (wide) mode: Approx 2.07 Megapixels (1920 x 1080) SD (normal) mode: Approx 1.55 Megapixels (1440 x 1080)
Maximum Recording Time	HD Mode: XP+ = 12Mbps / SL Disc 15 min. / DL Disc 27 min. XP = 9Mbps / SL Disc 20 min. / DL Disc 36 min. SP = 7Mbps / SL Disc 25 min. / DL Disc 45 min. LP = 5Mbps / SL Disc 33 min. / DL Disc 60 min.
Lens	Zoom Ratio 10x Optical/200x Digital Focal Length 6.1-61mm Zoom Speed Variable/3 Fixed Zoom Speeds Max. F/Stop f/1.8-3.0mm (when DVDs are used) Filter Size 37 mm
Focusing System	Instant AF, through the lens Manual focusing possible Manual Focus Assist Functions Magnifying, Peaking
Manual Exposure	Yes
Programmed AE	Auto, Program, Av, Tv, Portrait, Sports, Night, Snow, Beach, Sunset, Spotlight, Fireworks
Supported Playback Modes	1080/60i, 1080/24F
Max Shutter Speed	1/2000 1/500 (card)
Auto Date/Time	Yes
Record Search/Review	Yes
Minimum Focusing Distance	10 mm (wide)/ 1m (tele)
White Balance	Daylight, Shade, Cloudy, Tungsten, Fluorescent, Fluorescent H
Image Stabilization	SuperRange Optical (lens shift)
Viewfinder	Widescreen 0.27" Color Viewfinder/ (Approx 123,000 pixels)
LCD Screen	2.7" Multi-Angle Vivid Widescreen LCD (Approx. 211,000 pixels)
Recording Media	DVD-R/-RW/-R DL discs

Audio	HD/SD: Dolby Digital 2ch (AC-3 2ch)
Dimensions	(WxHxD) 2.6 x 3.7 x 5.2in.
Weight (not including lens and battery pack)	1.2 lbs

Memory Card

Number of Recording Pixels	Approx. 2.96 Megapixels 16:9 mode: Approx. 2.07 Megapixels (1920 x 1080)
-----------------------------------	---

Canon HR10 can capture both standard definition and high definition footage. High definition footage in the AVCHD format can be finalized in camera or copied onto DVD media with included software. However, DVD media containing AVCHD footage should only be used in AVCHD compatible players otherwise the DVD player may fail to eject the media and may erase its contents without warning.

Supplies & Accessories



CA-570 Compact Power Adapter

This compact adapter powers your camera from an AC power supply and charges your batteries on the camera. This allows for uninterrupted recording of your special events and keeps your batteries ready to go.



Component Cable CTC-100 Cable

Battery Pack BP-208



Battery Charger CG-300



Tele Converter TL-H37

For those times when you're far from the action, but want to capture everything like you're right there, the TL-H37 Tele Converter increases the focal length of your lens by 1.5X.

Wide-Converter WD-H37

A 0.7x wider perspective is achieved



SC-2000 Soft Carrying Case

Protect your camcorder with the professional-quality SC-2000 Soft Carrying Case, featuring secure compartments for filters and extra battery packs.



Interface Cable IFC-400PCU



Wide Converter WD-H37C

A 0.7x wider perspective is achieved

Canon FS-H37U 37MM Filter Set

**Can't find the part or accessory you're looking for? Customer Support can help.
Call 1-800-828-4040 for assistance.**

What's in the Box

HR10 Kit Contents:

1. HR10 Camcorder
2. BP-214 Battery Pack (with Terminal Cover)
3. CA-570 Compact Power Adapter
4. STV-100 N Stereo Video Cable
5. WL-D86 Wireless Controller
6. IFC-300PCU USB Cable
7. CTC-100 S Component Cable
8. DVD-R Disc
9. Digital Video Solution Disc for Windows and Macintosh
10. Corel Application Disc

