

Important Notice

The following drivers are included in the CD-ROM.

- Canon PCL5e printer driver v5.00
- Canon PCL6 printer driver v3.00
- Canon PS printer driver v1.20
- Canon Fax driver v1.50

Before installing any of the drivers listed above, please check the version of the drivers you are currently using. If the version you have installed is older than the one listed above, or if you know that you have installed any older versions, please follow the 'Upgrade Procedure' described below to upgrade the existing drivers depending on the following 4 cases.

Case1: The Canon PCL5e printer driver v4.90 or older versions had been installed on your PC.
→ Please follow the 'Upgrade Procedure' against the existing Canon PCL5e printer drivers.

Case2: The Canon PCL6 printer driver v2.60 or older versions had been installed on your PC.
→ Please follow the 'Upgrade Procedure' against the existing Canon PCL6 printer drivers.

Case3: The Canon PS printer driver v1.11 has been installed on your PC.
→ Please follow the 'Upgrade Procedure' against the existing Canon PS printer drivers.

Case4: The Canon Fax driver v1.40 or older versions had been installed on your PC.
→ Please follow the 'Upgrade Procedure' against the existing Canon Fax drivers.

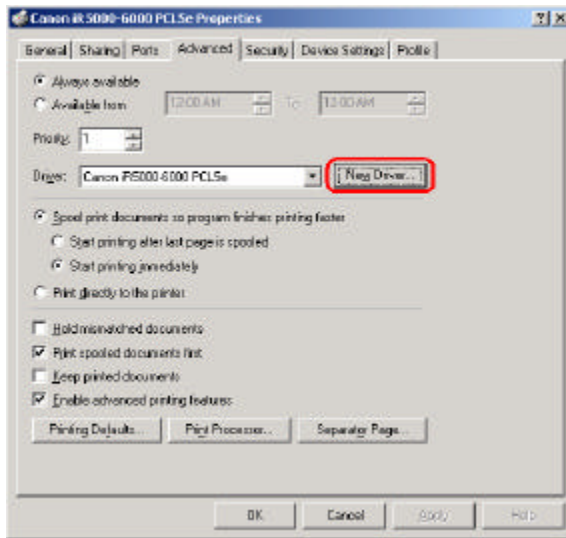
* To check the version of existing drivers, open the driver's Properties and click the 'About' button on the 'Device Settings' Tab (Windows NT4.0/2000) or on the 'Quality' Tab (Windows 9x/Me) **before** installing the drivers listed above.

* If you want to just upgrade the existing drivers to the drivers listed above without installing any new drivers, you can also upgrade them by following the upgrade procedure.

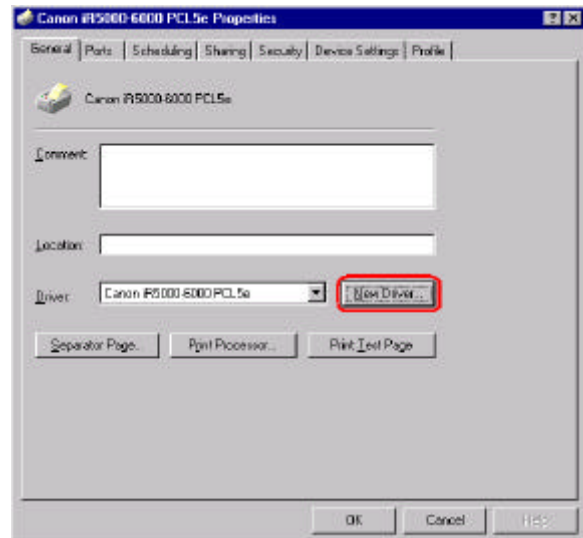
Upgrade Procedure

Note: If the drivers are shared from NT4.0 to NT4.0, or from Win2000 to Win2000, please follow the steps on the server side PC.

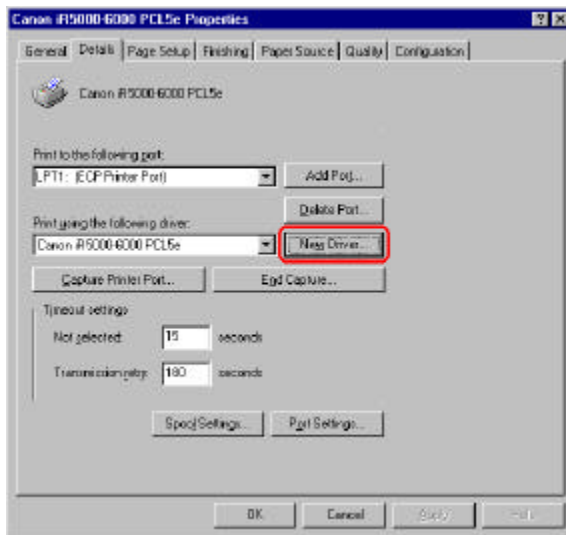
1. Choose the driver to be updated and remember the printer name.
2. Open the Properties of the driver and click the 'New Driver' button.



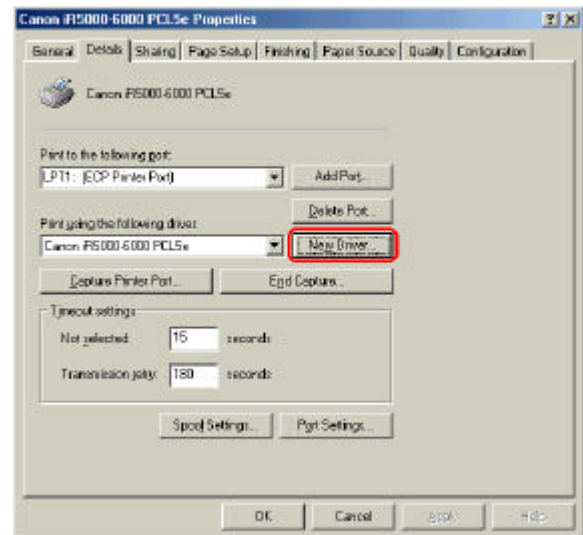
Windows 2000



Windows NT4.0



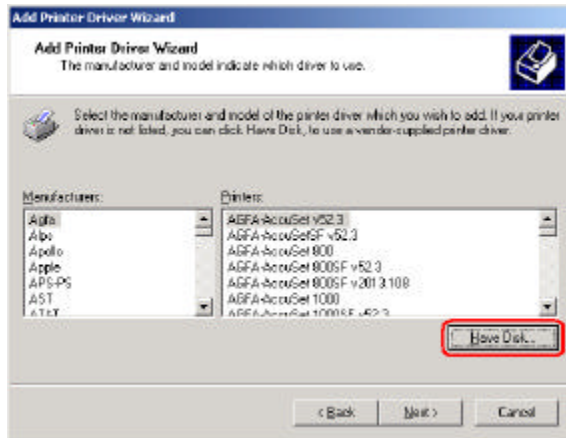
Windows 9x



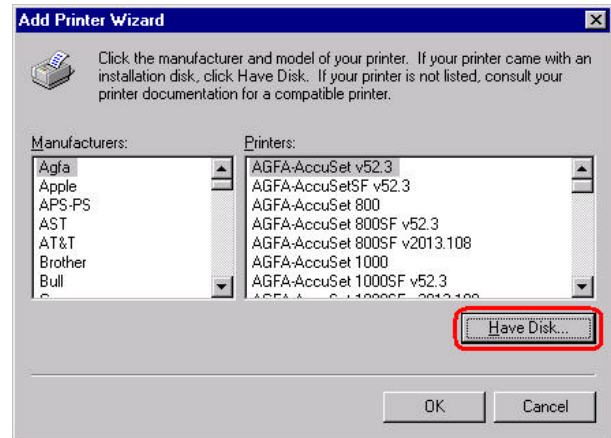
Windows Me

Canon

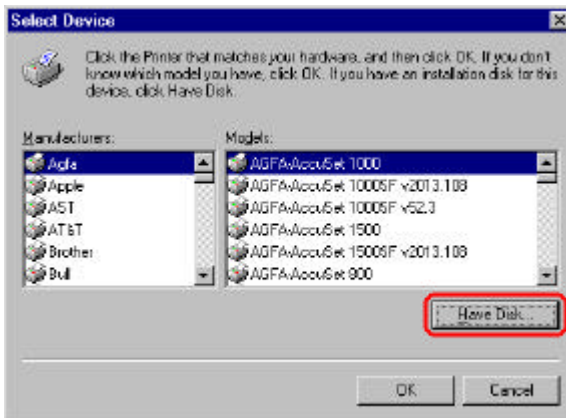
- When a message asking to choose driver to be used, click the 'Have Disk' button and specify the path of driver file set in the CD.



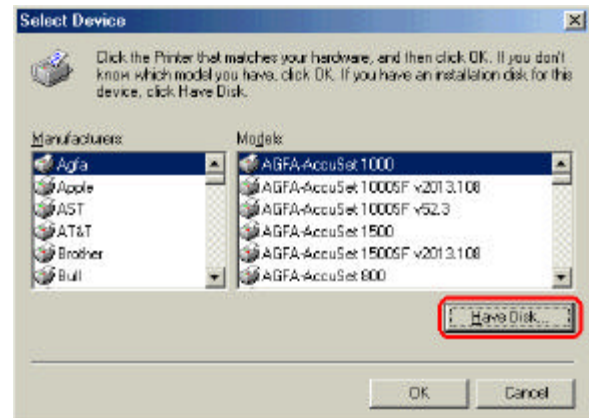
Windows 2000



Windows NT4.0

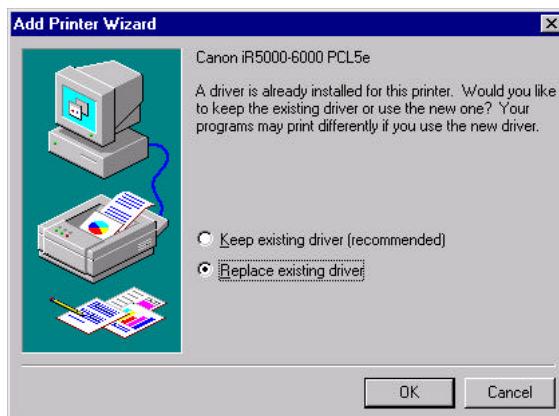


Windows 9x



Windows Me

- When message asking if you want to replace the existing driver is displayed, select the "Replace existing driver". (Windows NT4.0)



Canon

5. Check if the printer name has changed. If it has, rename it to original printer name you remembered at the step1. (Windows NT4.0)

For example, you may see that the printer name is changed automatically as follows.

From "Canon iR5000-6000 PCL5e" to "Canon iR5000-6000 PCL5e (Copy2)".

At this case you need rename the printer name to "Canon iR5000-6000 PCL5e".

6. Repeat step1 to 5 for other existing drivers.
 - If you installed or upgraded the Canon PCL5e Printer Driver, you need to repeat the steps for all existing Canon PCL5e Printer Drivers.
 - If you installed or upgraded the Canon PCL6 Printer Driver, you need to repeat the steps for all existing Canon PCL6 Printer Drivers.
 - If you installed or upgraded the Canon Fax Driver, you need to repeat the steps for all existing Canon Fax Drivers.
 - If you installed or upgraded the Canon PS Printer Driver, you need to repeat the steps for all existing Canon PS Printer Drivers.
7. Reboot the PC.

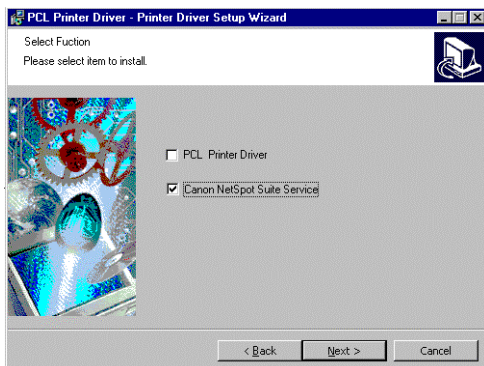
Note: After rebooting, the kernel of the existed driver will be replaced with the new one that you just installed. Thus the upgrading will not be completed without rebooting the PC.
8. Please check the device settings of all existing drivers after installing or upgrading a new driver, the settings may be changed. If they have changed please reconfigure them again.
9. If you want to use Job Accounting or set up the printer configuration automatically (Get Device Status), please follow the procedure 'Installing Canon NetSpot Suite Service' mentioned below as well.
 - image RUNNER 2200/2800/3300
 - imageRUNNER 5000/6000
 - imageRUNNER 8500
 - imageRUNNER 8500-M1
 - iR 3250

Installing Canon NetSpot Suite Service

1. Prepare the CD labeled "Canon iR Series Driver Software Disk1".
2. Double-click the Setup Installer for drivers at the following path in the CD.

Drive Letter of CD-ROM:\PCL(or PS)\Drivers\USEng\PrnSetup\PrinterDriver Installer.msi

If it was not launched or a window "Open With" appeared, launch the following path at first.
Drive Letter of CD-ROM:\PCL(or PS)\Drivers\USEng\PrnSetup\setup.exe
3. When a message asking to choose 'PCL Printer Driver' or 'Canon NetSpot Suite Service', click the 'Canon NetSpot Suite Service'.



Canon

4. After the installation reboot the PC.