

---

# Introduction

---

Thank you for purchasing the Microfilm Scanner 800II.

These Instructions describe how to use the ISIS/TWAIN driver software that makes it possible for you to use ISIS-compatible or TWAIN-compatible Windows applications with your Microfilm Scanner 800II. To ensure that you fully understand the functions provided by this driver and make the best possible use of those functions, read these Instructions in conjunction with the Microfilm Scanner 800II Instructions. The "Scanning Utility 800" scanning utility supplied with this package uses its own dedicated scanner driver and does not require the ISIS/TWAIN driver.

# Conventions

---

This manual uses the following symbols and icons.



Indicates important information on items that must be observed or that are prohibited as part of scanner operation. Read this information to prevent scanner faults or damage.



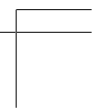
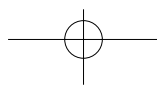
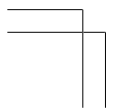
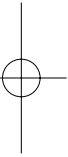
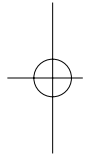
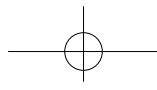
*Indicates additional information that is useful in operating the scanner. You are strongly advised to read these notes.*

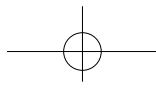
(→P.XX) Indicates a reference page. The number in the parentheses indicates a page where you can find more information about the preceding sentence or paragraph.

**Scanner** In these Instructions, the Microfilm Scanner 800II is referred to simply as the “scanner”.

# Contents

Introduction .....	1
Conventions .....	2
<b>Chapter 1 Installing the ISIS/TWAIN Driver .....</b>	<b>5</b>
Installing the ISIS/TWAIN Driver .....	6
To use the ISIS/TWAIN driver .....	6
Installing the ISIS/TWAIN driver .....	7
<b>Chapter 2 Using the ISIS driver .....</b>	<b>9</b>
Selecting the ISIS Driver .....	10
Scanner Settings .....	12
Dialog Boxes .....	13
Scanner Settings .....	14
Scanning Area Settings .....	18
Detailed Settings .....	21
Addon Settings .....	25
Gamma Curve Settings .....	30
Assigning Function Keys .....	32
Image Address Settings .....	35
<b>Chapter 3 Using the TWAIN driver .....</b>	<b>37</b>
TWAIN Driver Settings .....	38
Selecting the TWAIN Driver .....	38
TWAIN Driver Default Settings .....	39
Scanner Settings .....	40
Dialog Boxes .....	41
Scanner Settings .....	42
Detail Settings .....	46
Scanning .....	50
Preview Scan .....	50
Main Scan .....	51





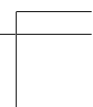
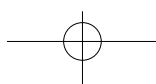
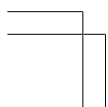
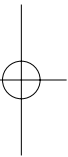
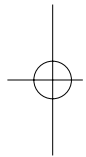
# Chapter 1

## Installing the ISIS/TWAIN Driver

---

This section describes how to install the ISIS/TWAIN driver.

Installing the ISIS/TWAIN Driver .....	6
To use the ISIS/TWAIN driver .....	6
Installing the ISIS/TWAIN driver .....	7



## Installing the ISIS/TWAIN Driver

This section describes the preparations for installing the ISIS/TWAIN driver on your PC and the installation procedure.

### To use the ISIS/TWAIN driver

- This ISIS/TWAIN driver uses the “wnaspi32.dll” file to control the scanner. Note that the scanner will not operate unless the “wnaspi32.dll” file is correctly installed. If “WINASPI32.DLL” is not installed, run “ASPIEX.EXE” located in the “ASPI” folder on the setup disk. For details, refer to README.TXT.
- This ISIS/TWAIN driver is not necessarily compatible with all ISIS/TWAIN-compatible applications.
- The ISIS/TWAIN-compatible application dialog boxes and menus shown in the explanations in these Instructions are only provided as examples. The actual screens may differ depending on the application you are using. Also, some applications may not support all the functions described here. Contact your application software supplier for details.
- Note that some scanner functions may not run correctly if they are not supported by the application software.
- This ISIS/TWAIN driver supports multiple languages (Japanese, English, French, German, Spanish and Italian). The driver language is selected automatically in accordance with the “Region” setting in Windows.

If the driver language differs from the language used by your application software, the dialog boxes in the driver software may not be displayed correctly. If this occurs, ensure that the driver language matches that of the application.

To change the driver language, change the “Region” setting in the Control Panel.

You can also change the driver language without changing the “Region” setting.

To do this, set the driver language by overwriting the following 2 lines in the “Setscan.ini” file in the Windows folder.

#### [Options]

Language=xxxx (xxxx specifies the language)

Definitions for xxxx

1031: German

1033: English

1034: Spanish

1036: French

1040: Italian

1041: Japanese

If changing the “Region” setting in the Control Panel and modifying the Setscan.ini file fails to change the specified language, your application software may restrict language switching. If so, the language cannot be changed.

## Installing the ISIS/TWAIN driver

1

Installing the ISIS/TWAIN Driver

This section describes how to install the ISIS/TWAIN driver on your PC.

### 1 Login to Windows.



IMPORTANT

If you are using Windows 2000 Professional, or Windows XP, be sure to log on as a user with administrator privileges.

### 2 If you are already using another ISIS-compatible driver, make backup copies of the following files:

\windows\system\pix\*.dll  
 \windows\pixtran\\*.\*



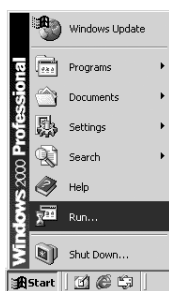
IMPORTANT

When you install the ISIS/TWAIN Driver, the above files may be modified. Always back up these files before you install the driver.

### 3 Load the setup disk into the CD-ROM drive.

### 4 Select [Start]-[Run].

The screen that appears varies depending on your version of Windows.



[Windows 2000]



**5** Type “D:\pixtran\setup.exe” in the “Open” field and click [OK].

In this description, the CD-ROM drive is drive D:.

⇒ The installation startup screen for the driver appears.



**6** Click [Next] to begin the installation.

⇒ The installation completed screen appears.



**7** Click [Finish] to complete the installation.





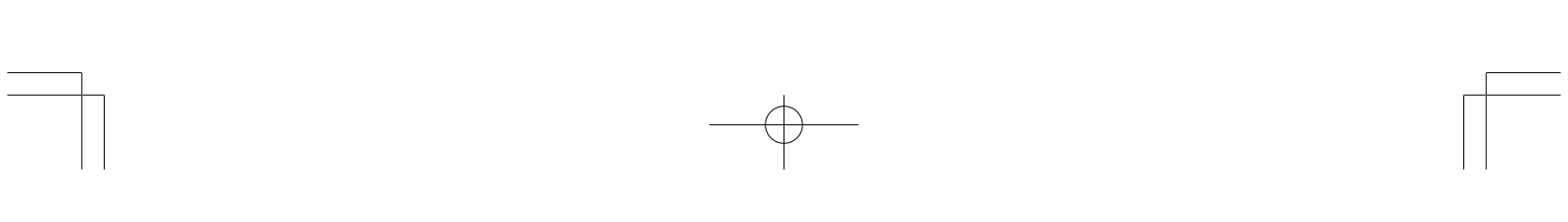
# Chapter 2

## Using the ISIS driver

---

This chapter describes how to use the ISIS driver.

Selecting the ISIS Driver .....	10
Scanner Settings .....	12
Dialog Boxes .....	13
Scanner Settings .....	14
Scanning Area Settings .....	18
Detailed Settings .....	21
Addon Settings .....	25
Gamma Curve Settings .....	30
Assigning Function Keys .....	32
Image Address Settings .....	35



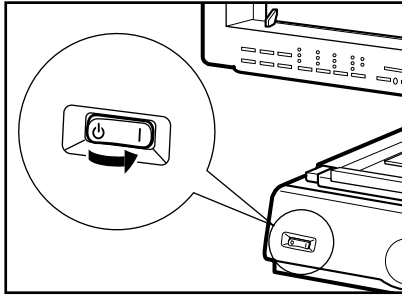
## Selecting the ISIS Driver

Before using the ISIS driver, you must first select the ISIS driver to be used by the Microfilm Scanner 800II. You do this only once after you install the ISIS/TWAIN driver. You do not have to repeat this procedure unless you connect a scanner other than the Microfilm Scanner 800II.



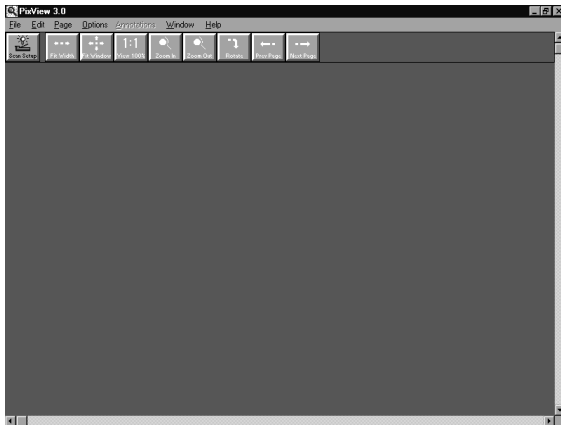
*In this explanation, “PixView” is used as an example of an ISIS-compatible application. Depending on the application program you use, the actual dialog boxes and menus on your screen may differ from those shown in this explanation. Refer to the manual for your application software for details.*

### 1 Turn on the scanner.



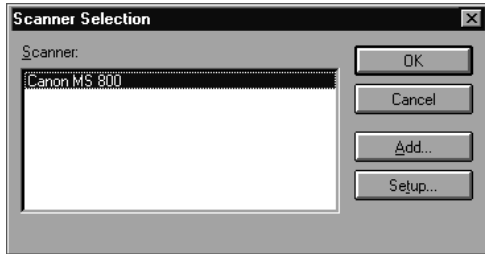
### 2 Turn on your PC and launch “PixView”.

➔ PixView starts up.



### 3 Select [File]-[Select Scanner].

➔ The “Select Scanner” dialog box appears.

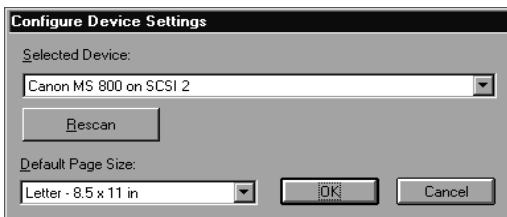


IMPORTANT

If “Canon MS800” is not included in the list of scanners, the ISIS driver is not installed correctly. Re-install the ISIS/TWAIN driver.

### 4 Select [Canon MS800] and click [Setup].

➔ The “Set Scanner” dialog box opens.



IMPORTANT

“Canon MS800 on SCSI X” (where X is the MS800II SCSI ID) appears in the [Device Address Selection:] field. If the “No Devices Found” message appears or nothing is displayed, the scanner is not connected correctly. Turn off the computer and check the scanner connections.

### 5 Set the default page size.

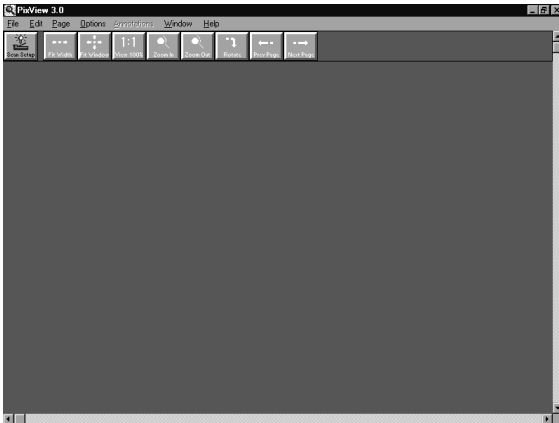
➔ The default page size selected here becomes the default setting.

### 6 Click [OK] to complete ISIS driver selection.

# Scanner Settings

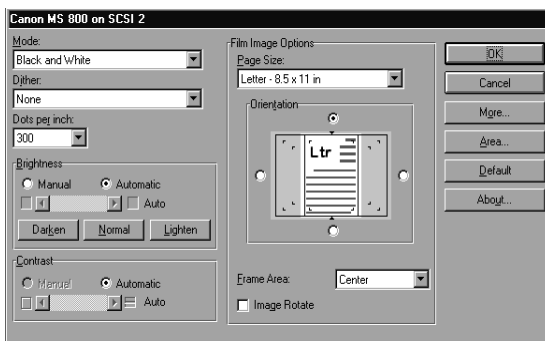
Before using the scanner, open the “Canon MS800 on SCSI X” dialog box and specify the scanner settings.

## 1 Return to the “PixView” main window.



## 2 Select [Options]-[Scanner Settings].

➔ The “Canon MS800 on SCSI X” dialog box opens.



NOTE

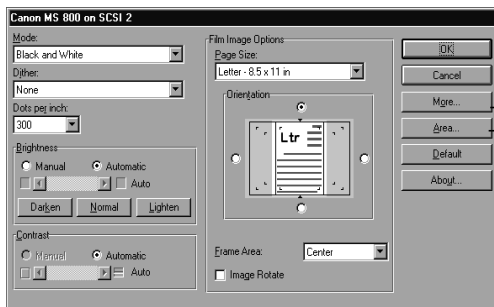
*In this explanation, “PixView” is used as an example of an ISIS-compatible application. Depending on the application program you use, the actual dialog boxes and menus on your screen may differ from those shown in this explanation. Refer to the manual for your application software for details.*

## 3 Open the dialog boxes for the settings you intend to use and specify the appropriate settings. (→ P.13 “Dialog Boxes”)

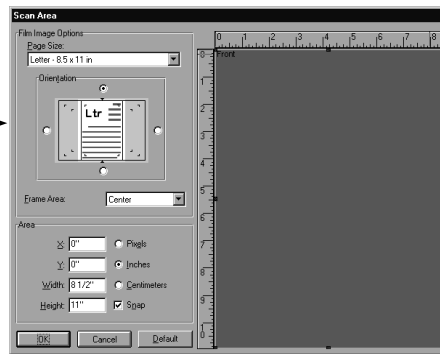
## Dialog Boxes

The dialog boxes for specifying the scanner settings are arranged in the hierarchy shown below. Some of the settings and buttons in the dialog box are only valid when the FS Controller III is connected. For details, refer to the relevant pages for the respective setting or button. Open the dialog boxes for the settings you intend to use and specify the appropriate settings.

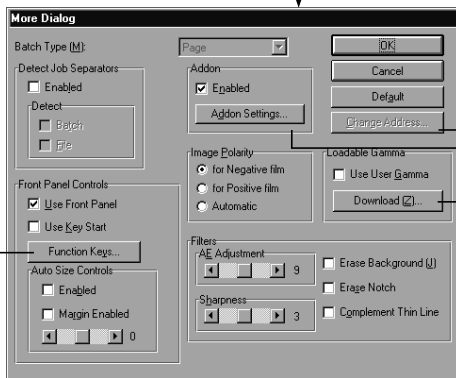
2  
Using the ISIS driver



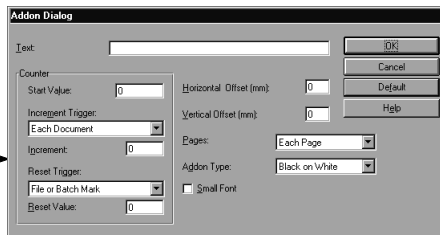
“Scanner Settings” dialog box (→ P.14 “Scanner Settings”)



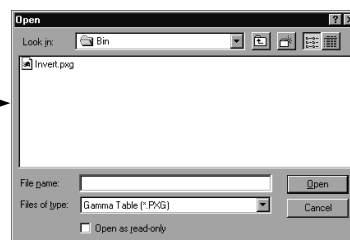
“Scan Area” dialog box (→ P.18 “Scanning Area Settings”)



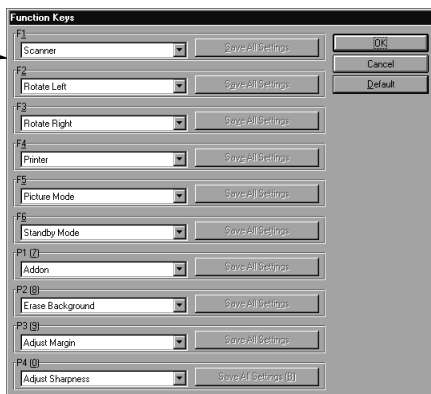
“Detailed Settings” dialog box (→ P.21 “Detailed Settings”)



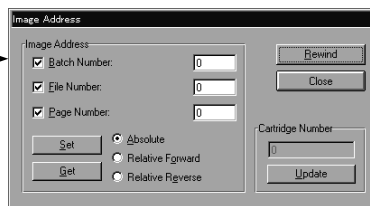
“Addon Dialog” dialog box (→ P.25 “Addon Settings”)



“Download” dialog box (→ P.30 “Gamma Curve Settings”)



“Function Keys” dialog box (→ P.32 “Assigning Function Keys”)

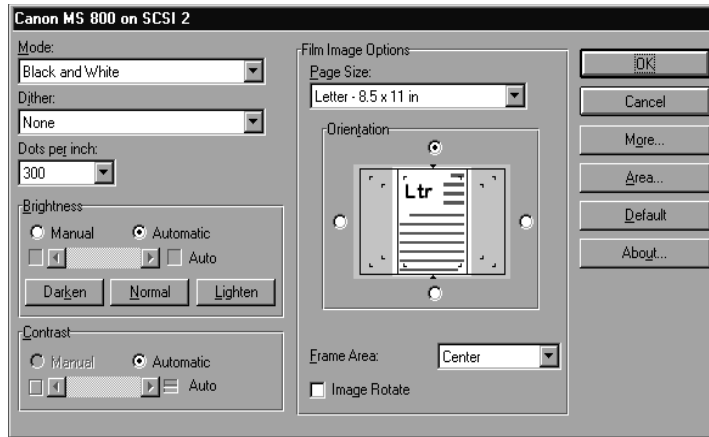


“Image Address” dialog box (→ P.35 “Image Address Settings”)

## Scanner Settings

Use this dialog box to specify the scanning parameters.

The basic settings are specified from the “Canon MS800 on SCSI X” dialog box.



### <Scanner Settings>

#### Mode

Selects the scanning mode.

##### **[Black and White]**

Scans film with content such as text and line drawings in black and white.

##### **[16 / 256 - level Gray]**

Imports the scanned image using multiple values. Used for situations where multi-value data is required, such as where image processing of the scanned image is performed on a PC.



To scan an image in grayscale, additional memory must be installed in the scanner. Contact an authorized Canon service representative for details.

#### Dither

Selects the binary conversion method.

##### **[None]**

Scans the image as simple binary data. Select this option to scan film with content such as text and line drawings in black and white.

##### **[Fine]**

Scans film with content that has minimal variations in density so that the level of contrast is enhanced.

##### **[Picture]**

Best for photos and images that contain halftones. Error diffusion is used to simulate and reproduce halftones.

**Dots per Inch (Resolution)**

Sets the resolution used (in dots per inch (dpi)) when the document is scanned. Resolutions of 200, 300 or 600 can be selected.

**Brightness**

Automatically or manually sets the brightness of the image scanned. If the automatic setting is selected, the brightness is set automatically. When manual setting is selected, a value from 1 to 255 can be specified. Higher settings increase the amount of exposure to give a brighter image and lower values decrease the amount of exposure to give a darker image.

**[Darken] button**

Darkens the entire image. Sets a value of 64.

**[Normal] button**

Sets the standard level of brightness. Sets a value of 128.

**[Lighten] button**

Lightens the entire image. Sets a value of 192.

**Contrast**

If the [Brightness] setting is selected manually, the [Contrast] setting is also set manually. This setting specifies a value from 1 to 255 as the contrast adjustment. If the [Brightness] setting is selected automatically, the [Contrast] setting is also set automatically and the image contrast cannot be adjusted here.

**<Film Image Options>****Page Size**

Selects one of the following as the size of the document to be scanned.

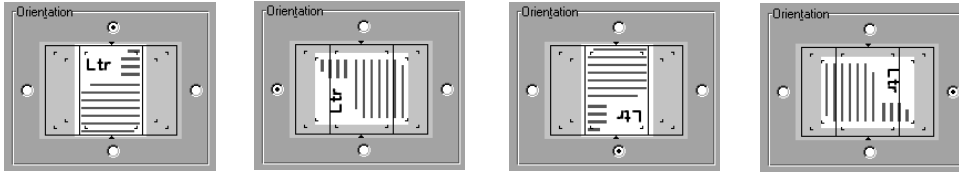
A3 - 297 x 420 mm  
 A4 - 210 x 297 mm  
 A5 - 148 x 210 mm  
 A6 - 105 x 148 mm  
 B4(ISO) - 250 x 353 mm  
 B4(JIS) - 257 x 364 mm  
 B5(ISO) - 176 x 250 mm  
 B5(JIS) - 182 x 257 mm  
 Ledger - 11 x 17 in  
 Legal - 8.5 x 14 in  
 Letter - 8.5 x 11 in  
 Statement - 8.5 x 5.5 in  
 Scanner's maximum size

If the document scanned is larger than the specified size, the outside edges of the document will be cropped. Conversely, if the scanned document is smaller than the specified size, a black margin will be shown around the scanned image.

If Auto Size Controls (→ P.22) is specified in the "More Dialog" dialog box, this setting is ignored.

**Orientation**

Sets the orientation (top, bottom, left and right) for the selected page size.



*If the page size is larger than A4, the top and bottom orientations cannot be selected.  
Also, if the scanner's maximum size is selected, the left and right rotation settings cannot be selected.*

**Frame Area**

Selects the reference position for scanning relative to the screen.

**[Center]**

Scans the specified page size using the center of the screen as the reference position. (→ “Setting the Scanning Position” on P.35 of the Microfilm Scanner 800II Instructions)

**[Left]**

Scans the specified page size using the left edge of the screen as the reference position. (→ “Setting the Scanning Position” on P.35 of the Microfilm Scanner 800II Instructions)

**[Separate]**

Scans the image as 2 separate pages using the center of the image as the divide. (→ “Setting the Scanning Position” on P.35 of the Microfilm Scanner 800II Instructions)

**[Overlay]**

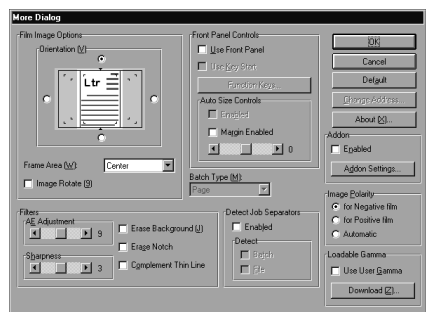
Selects overlay (multiple image) scanning. (→ “Function Keys” on P.38 of the Microfilm Scanner 800II Instructions)

**[Image Rotate] checkbox**

Rotates the scanned image 90° to the right (clockwise) for printing.



*In some application programs, the “Film Image Options” are incorporated into the “More Dialog” dialog box in the application.*





## <Buttons>

---

### **OK**

Applies the selected settings and closes the dialog box.

### **Cancel**

Closes the dialog box without applying the selected settings.

### **More**

Opens the “More Dialog” dialog box.

### **Area**

Opens the “Scan Area” dialog box.

### **Default**

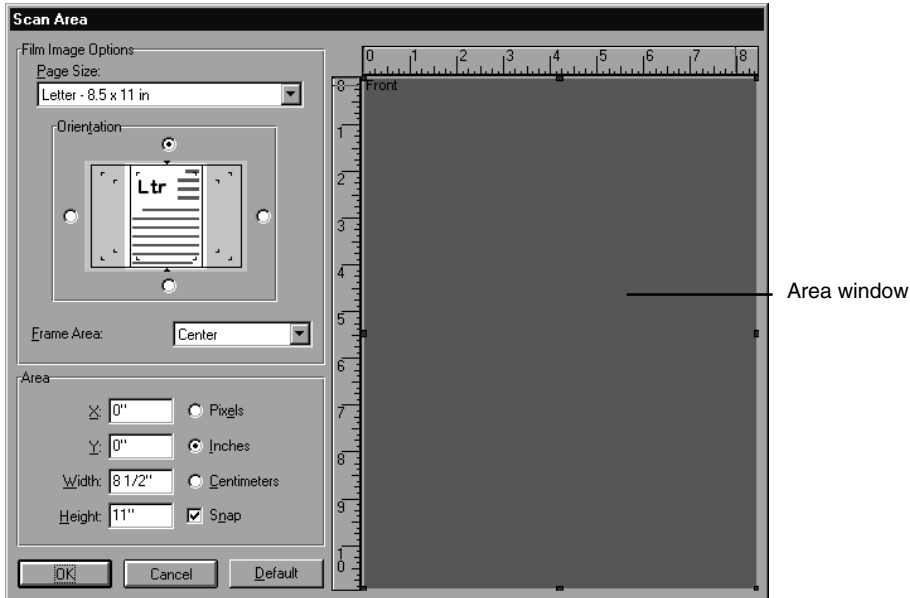
Restores the initial default settings.

### **About**

Displays the software version information.

## Scanning Area Settings

Use this setting when you want to specify that only a specific area of the document be scanned. Use the “Scan Area” dialog box to specify this setting.



NOTE

*If Auto Size Controls (→ P.22) is selected in the “More Dialog” dialog box, the area setting specified here is ignored.*

### <Film Image Options>

→ See “Film Image Options” on P.15.

### <Area>

#### Coordinate locations

##### [X]

In this field, enter the X coordinate from the top-left corner of the scanning area.

##### [Y]

In this field, enter the Y coordinate from the top-left corner of the scanning area.

##### [Width]

In this field, enter width of the scanning area.

##### [Height]

In this field, enter height of the scanning area.

## Units

### [Pixels]

Shows the coordinate locations in pixels. When the [Snap] checkbox is ticked, locations are shown in multiples of 32 pixels.

### [Inches]

Shows the coordinate locations in inches. When the [Snap] checkbox is ticked, locations are shown in multiples of 1/8 of an inch.

### [Centimeters]

Shows the coordinate locations in centimeters. When the [Snap] checkbox is ticked, locations are shown in multiples of 0.1 cm.

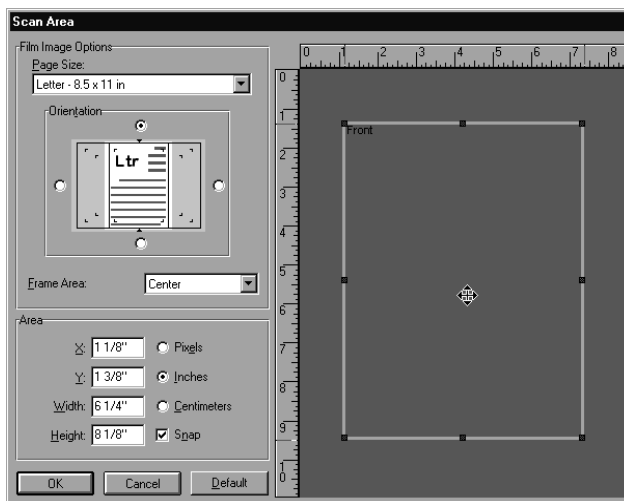
### [Snap] checkbox

Automatically adjusts the coordinate locations for the scanning area to the nearest rounded value.

## <Area Window>

The scanning area for the specified page size is shown in the Area window. The size of the Area window changes depending on the page size.

The size of the scanning area can be adjusted by dragging the black squares ■ around the edges of the area. Also, when you move the cursor into the adjusted area, the cursor changes to a cross shape (⊕) and the entire scanning area can then be moved around by dragging the cross-shaped cursor.



IMPORTANT

If you are using an SVGA display (800 x 600 pixels), note that the dialog box will not all fit on the screen when you select “Statement” or “Scanner’s maximum” as the page size.

### <Buttons>

---

#### **OK**

Applies the selected settings and closes the dialog box.

#### **Cancel**

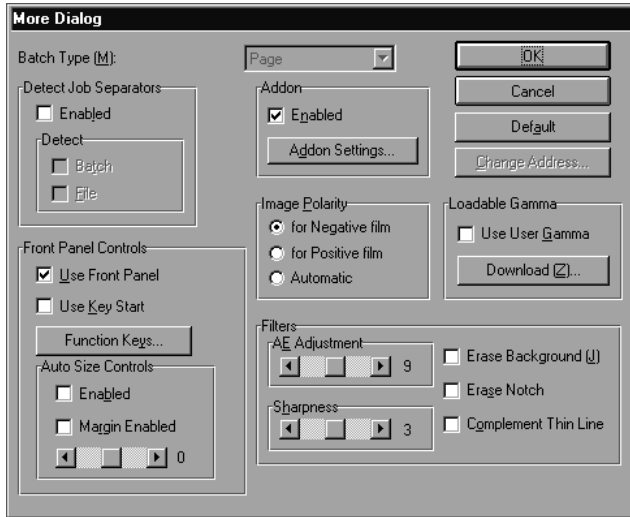
Closes the dialog box without applying the selected settings.

#### **Default**

Restores the initial default settings.

## Detailed Settings

Use the More Dialog dialog box to specify the detailed scanning parameters.



NOTE

*The Batch Scanning Mode function, Detect function and “Change Address” button are only valid when the FS Controller III is used.*

### <Batch Type>

Batch Type permits consecutive scanning and can be selected when the FS Controller III is used. Refer to the FS Controller III Instructions for details.

#### [Page]

Specifies consecutive scanning one page at a time.

#### [File]

Specifies consecutive scanning one file at a time.

#### [Batch]

Specifies consecutive scanning one batch at a time.



IMPORTANT

When you select Batch mode, always ensure that OFF is selected in the Key Start setting (→ P.22, “Front Panel Controls”). Selecting ON as the Key Start setting disables the Batch mode setting. If you want to use Batch mode when the Key Start setting is ON or if you want to use Batch mode from FS Controller I, select Batch mode from the keyboard supplied with the FS Controller. Refer to your FS Controller Instructions for details.

## <Detect Job Separators>

---

### **[Enabled] checkbox**

Ticking this checkbox validates file separators during continuous scanning and enables the “New File” function assigned to the function key (→ P.32, “Assigning Function Keys”).

### **Detect**

Either of the following job separators can be selected when the FS Controller III is used.

### **[Batch] checkbox**

The batch marks on the film are used to separate jobs.

### **[File] checkbox**

The file marks on the film are used to separate jobs.



*If you tick both the [Batch] and the [File] checkbox, both file and batch separators on the film separate jobs.*

## <Front Panel Controls>

---

These options enable various operations and setting modifications performed from the scanner’s front panel.

### **[Use Front Panel] checkbox**

Enables operations performed from the scanner’s front panel.

### **[Use Key Start] checkbox**

When this option is selected, the Start key on the scanner’s front panel turns green when the command to begin scanning is issued and the scanner waits for the Start key to be pressed. This allows you to check the image to be scanned before pressing the Start key to perform the scan.

### **[Function Keys] button**

Opens the “Function Keys” dialog box used to set the functions assigned to function keys. (→ P.32 “Assigning Function Keys”)

### **Auto Size Controls**

When you enable the Auto Size Controls option, the “Scan Size” and “Trimming/Border” settings on the scanner are also enabled and the “Page Size” setting is ignored.

(→ “Selecting the Scan Size” on P.35 and “Trimming/Border settings” on P.36 of the Microfilm Scanner 800II Instructions)

### **[Enabled] checkbox**

Enables the Auto Size Controls option.

**[Margin Enabled] checkbox**

“Read Margins” sets the top, bottom, left and right margins for the specified scan size. The margin size can be set to a value between -10 (scans an area 10 mm smaller) and 10 (scans an extra 10 mm).

For example, you can enter a positive value when you want to enlarge the scanning area slightly to ensure that the edges of the document are not cropped. Conversely, you can enter a negative value when you want to reduce the scanning area slightly to avoid a black border around the resulting scanned image.

The margin setting specified here is also applied in the Auto Size Controls option.

**<Addon>****[Enabled] checkbox**

Tick this checkbox to imprint the information specified in the Addon setting (→ P.25) on the scanned image.

**[Addon Setting] button**

Opens the “Addon Setting” to specify the settings for the Addon function that adds text to a scanned image. (→ P.25 “Addon Settings”)

**<Image Polarity>**

Selects the film polarity.

**[for Negative film]**

Reverses black and white in a negative film image and displays a positive image.

**[for Positive film]**

Displays positive film as a positive image.

**[Automatic]**

Automatically detects whether the film is negative or positive and displays a positive image.

**<Loadable Gamma>****[Use User Gamma] checkbox**

Check this option to use the downloaded gamma curve data. When gamma curve data is used, the image polarity setting is ignored.

**[Download] button**

Selects and downloads the gamma curve data. The downloaded gamma curve data is valid when the [Use loaded GRC] checkbox is ticked. (→ P.30, “Gamma Curve Settings”)

## <Filters>

---

These settings specify the image processing filters used.

### **AE Adjustment**

This option specifies fine adjustment for the automatic brightness adjustment and is enabled when [Black and White] is selected in the Mode setting. AE fine adjustment is valid when the "Automatic" option is selected for [Brightness] in the "Canon MS 800 on SCSI X" dialog box and can be set to any value between 1 and 17.

### **Sharpness**

This setting sets the levels for text outline enhancement and for the softening of image gradations in photographs, etc. This setting is valid when the Mode setting is [Black and White] and can be set to a value between 1 and 5.

### **[Erase Background] checkbox**

This option automatically erases speckling in the background of text, line drawings, etc., and is valid when the Mode is set to [Black and White] and the Dither setting is [None] or [Fine].

### **[Erase Notch] checkbox**

The "Erase Notch" option automatically erases portions of the image (notches) that overlap the outline and is valid when the Mode is set to [Black and White] and the Dither setting is [None] or [Fine].

### **[Complement Thin Line] checkbox**

The [Complement Thin Line] option reduces the incidence of fading and gaps in faint or broken lines when thin lines or faint documents are scanned. This option is valid when the Mode is set to [Black and White] and the Dither setting is [None] or [Fine].

## <Buttons>

---

### **OK**

Applies the selected settings and closes the dialog box.

### **Cancel**

Closes the dialog box without applying the selected settings.

### **Default**

Restores the settings specified at shipment.

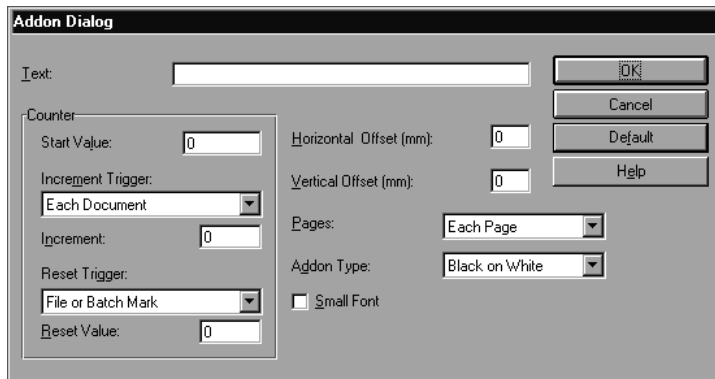
### **Change Address**

This button opens the "Image Address" dialog box (→ P.35) so that the film address to be scanned can be changed and is enabled when the FS Controller III is used. Refer to the FS Controller III Instructions for details.



## Addon Settings

The Addon function can be used to add (imprint) any text or see before in a scanned image. Use the “Addon Dialog” dialog box to specify the text to be added by the Add on function along with the related settings.



2

Using the ISIS driver

### Text

Enter the information to be imprinted.

Any of the following letters and symbols can be specified up to a maximum of 63 characters.



IMPORTANT

The maximum number of characters that can be entered is 63. If you enter more than 64 characters and specify imprinting, a parameter error is displayed when scanning begins. In this event, open the “Add on Dialog” dialog box and reduce the number of entered characters to 63 or less.

- Numbers (0 to 9)
- Letters (uppercase or lowercase)
- Spaces
- Symbols: !"#\$%&'()\*+,-./:;<=>?@\]^\_`{|}~'

In addition to these, counters, times, dates, arrows and film addresses can be specified as special character strings.

### <Counter>

To add on a counter, specify a number in the format shown below.

The size of the timer increment and the timing of incrementing is set in the “Counter” settings described below.

<C>: Adds a 9-digit counter

<C#> (# is a number from 1 to 9): Adds a counter with the specified number of digits.

**<Time>**

To add the time at which the document was scanned, type <TIME>.

The time is added as an 8-digit number in the 24-hour clock format, as shown in the examples below.

(For 4.28.30 pm)

(Input)	(Add on result)
<TIME>	16:28:30

**<Date>**

To add the date on which the document was scanned, type a combination of Y (year), M (month) and D (day) to give <MDY>, <DMY> or <YMD>.

The date is added as a 10-digit number as shown in the example below. Forward slashes are used as separators between the year, month and day.

(For March 10, 2000)

(Input)	(Add on result)
<YMD>	2000/3/10

**<Arrows>**

To add an arrow, type one of the following:

(Input)	(Add on result)
<U>	↑
<D>	↓
<L>	←
<R>	→

**<Film Address>**

When the FS Controller III is used as the carrier, this option adds the roll film address recognized by the FS Controller III.

To add the film address (batch, file and page), type <A>.

The added address is enclosed in brackets ( ), with the batch, file and page addresses added sequentially and separated by periods (.). Because batch, file and page addresses can each contain up to 9 digits, the added address consists of up to 31 characters including the enclosing brackets and the separating periods.

(Input)	(Add on result)
<A>	[123456.789012.345]
	Batch File Page

**<Counter>**

When a counter is set in a text string, use these settings to specify the size of the counter increment and the increment trigger.

**Start Value**

Sets the starting value for the counter.



NOTE

*The reset value described below (→P.28) is restricted to a value between 0 and 255. Consequently, if the start value is set to 256 or higher, the initial value following a reset will be smaller than the start value.*

2

Using the ISIS driver

**Increment Trigger**

Select one of the following as the trigger for incrementing the number on the counter.

**[New File]**

Increments the counter when a new file command is used to change to a new file.

**[File Mark]**

Increments the counter at each file mark on the film.

**[Batch Mark]**

Increments the counter at each batch mark on the film.

**[File or Batch Mark]**

Increments the counter at each file or batch mark on the film.

**[Each Document]**

Increments the counter at each scanned image.

**[Never]**

The counter is not incremented.



NOTE

The [File Mark], [Batch Mark] and [File or Batch Mark] settings are valid when the FS Controller III is used. Refer to the FS Controller III Instructions for details.

**Increment**

Sets a value between 0 and 255 as the amount by which the counter is incremented.

**Reset Trigger**

Select one of the following as the trigger for resetting the counter.

**[New File]**

Resets the counter when a new file command is used to change to a new file.

**[File Mark]**

Resets the counter at each file mark on the film.

**[Batch Mark]**

Resets the counter at each batch mark on the film.

**[File or Batch Mark]**

Resets the counter at each file or batch mark on the film.

**[Each Document]**

Resets the counter at each scanned image.

**[Never]**

The counter is not reset.



NOTE

The [File Mark], [Batch Mark] and [File or Batch Mark] settings are valid when the FS Controller III is used. Refer to the FS Controller III Instructions for details.

**Reset Value**

Sets a value between 0 and 255 as the starting value for the counter after a reset.

**Horizontal Offset (mm)**

Specifies a value between 0 and 500 as the horizontal (X direction) offset when the Add on function is used. This setting moves the position of the added text on the screen the specified distance to the right from the left edge of the image, using the top-left corner of the scanned area as the origin point.

**Vertical Offset (mm)**

Specifies a value between 0 and 300 as the vertical (Y direction) offset when the add on feature is used. This setting moves the position of the added text on the screen the specified distance downwards from the top edge of the image, using the top-left corner of the scanned area as the origin point.

**Pages**

Selects the page to which text is added.

**[Each Page]**

Adds the text to every page.

**[Separator]**

Adds the text to the next page after the file separator.

**Add on Type**

Selects the way in which addon text is imprinted onto the image.

**[Black on White]**

Adds black letters on a white background.

CANON ABC NICS II

**[White on Black]**

Adds white letters on a black background.

CANON ABC NICS II

**[Black on Image]**

Overlays black letters onto the image.

CANON ELECTRONICS II  
ABC

**[Small Font] checkbox**

Adds the text using a small font.

Note that the size of the characters added to an image varies depending on the scanning resolution.

Normal font    ABC

Small font    ABC

**<Buttons>**

**OK**

Applies the selected settings and closes the dialog box.

**Cancel**

Closes the dialog box without applying the selected settings.

**Default**

Restores the initial default settings.

**Help**

Displays the formats in which text can be entered.

## Gamma Curve Settings

These settings specify the gamma curve.



NOTE

*The gamma curve setting uses gamma curve data prepared by the user to adjust the output values (to the computer) relative to the input values for 256 levels of brightness in the scanned image.*

*The gamma curve settings specified here are only valid if the [Use User Gamma] option is checked in the "More Dialog" dialog box.*

- 1** Prepare gamma curve data matched to the gamma curve.  
(→P.31 "Preparing Gamma Curve Data")
- 2** Click the [Download] button and select the prepared gamma curve data.



NOTE

*The file extension for gamma curve data is "\*.pxg".*

- 4** Click [Open] to download the gamma curve data and return to the "More" dialog box.



NOTE

*The downloaded gamma curve data is stored in the scanner even when it is switched off and is not changed until another set of gamma curve data is downloaded.*

- 5** Tick the [Use User Gamma] checkbox to use the downloaded gamma curve data.



NOTE

*If the [Use User Gamma] checkbox is not ticked, the standard gamma curve is used.*

## ◆ Preparing Gamma Curve Data

Gamma curve data consists of a 258-line text file (\*.pxg) containing the output values for the 256 levels of input values.

Always enter a comment in line 1 of the gamma curve data and "256" in line 2 to indicate the number of data items.

Lines 3 onwards set the output values for each input value, starting with the output values for "0" in line 3, "1" in line 4 and so on through to the output value for input value "255" in line 258.

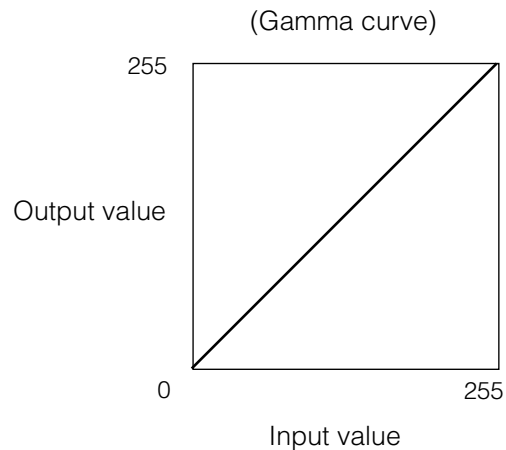
Smaller values in the gamma curve data give a darker image while larger values produce a lighter image.

## ◆ Example of Gamma Curve Data Preparation

Normally, the gamma curve rises from left to right. However, the falling gamma curve shown in the lower figure below inverts all the output values so that the resulting image is inverted.

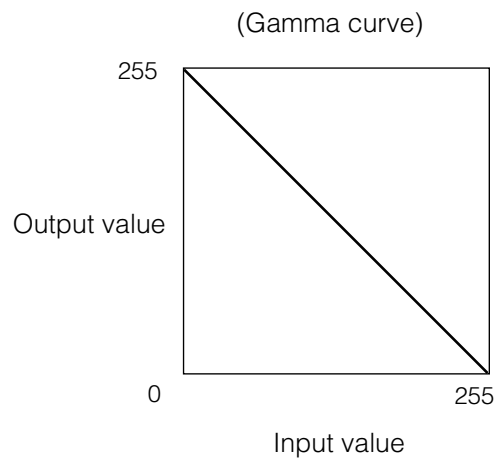
### Gamma curve data

```
Line 1 : gamma curve
Line 2 : 256
Line 3 : 0
Line 4 : 1
Line 5 : 2
:
Line 253 : 250
Line 254 : 251
Line 255 : 252
Line 256 : 253
Line 257 : 254
Line 258 : 255
```



### Gamma curve data (inverted)

```
Line 1 : Inverted linear gamma curve
Line 2 : 256
Line 3 : 255
Line 4 : 254
Line 5 : 253
:
Line 253 : 5
Line 254 : 4
Line 255 : 3
Line 256 : 2
Line 257 : 1
Line 258 : 0
```



## Assigning Function Keys

Specific functions can be stored in the function keys on the scanner. Use the “Function Keys” dialog box to set the function keys.



### 1 Select a function key.

When you select the function key to which a function is to be assigned from the pull-down menu, the assignment function displays the function stored in the selected key.



NOTE

*Functions stored in F1 to F6 in the key selections are assigned to the F1 to F6 keys on the operation panel. Functions stored in the P1 to P4 keys are assigned to the P1 to P4 keys on the optional keyboard (sold separately).*

### 2 Assign the function.

Any of the following 19 functions can be assigned to a function key. Refer to “Function Keys” on P.38 of the Microfilm Scanner 800II Instructions for more information on the respective functions.

#### [Scanner]

Pressing this key switches the scanner to Scanner mode.

#### [Rotate Left]

Rotates the image on the screen 90° to the left (counterclockwise).

#### [Rotate Right]

Rotates the image on the screen 90° to the right (clockwise).



**[Printer]**

Pressing this key switches the scanner to Printer mode.

**[Picture Mode]**

Pressing this key switches the scan mode to [Monochrome Photo].

**[Standby Mode]**

Puts the scanner into Standby mode. Screen projection is switched off and the standby display appears.

Press this key again or any other key to cancel Standby mode.

**[Addon]**

Specifies whether text, counters, or information such as the date or time are imprinted on the scanned image.

**[Erase Background]**

When the Mode is set to [Black and White] and the Dither setting is [None] or [Fine], pressing this key automatically erases speckling in the background of text, line drawings, etc.

**[Adjust Margin]**

This function adjusts the margin size during scanning. When you press this key, the display shows the margin size. The margin can be adjusted to a value between -10 mm and 10 mm either side of 0.

**[Adjust Sharpness]**

Selects the level of sharpness (edge enhancement) during scanning. When you press this key, the display shows the level of sharpness. Select any of 5 levels from 1 to 5.

**[New File]**

If you press this key when separators (→ P. 22) are enabled in Detail Settings, the scanned image is saved to a separate file (folder) after the key is pressed.

**[Lighten Screen]**

Lightens the screen

**[Darken Screen]**

Darkens the screen

**[Margin Scanning]**

Specifies whether margins are scanned when an image is scanned.

**[Skew Correction]**

Corrects skewed images during scanning so that images are scanned straight.

**[Auto Center Image]**

In Reader/Printer mode, this function prints the scanned image in the center of the page.

**[Overlay]**

When you press this key, the 2 images in the A and B positions on duplex film are scanned for output as a single image with one image positioned above the other.

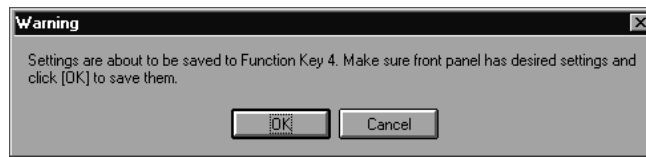
**[Save Settings]**

Stores the specified front panel status and scanning parameter settings in a function key.



NOTE

*When you select [Save Settings], the message shown below appears. Clicking [OK] enables the [Save Settings] button. Clicking [Cancel] returns all the settings to the values set before [Save Settings] was selected. Check the function key settings before clicking the button.*



*To assign the [Save Settings] function to a function key, set the scanning parameters and then open the "Function Keys" dialog box and select [Save Settings] for the key to which the scanner settings are to be assigned. If you have already assigned the [Save Settings] function, click the [Save Settings] button to store the settings.*

*Please note that if [Save Settings] has been registered in the function key from the ISIS/TWAIN driver, then the registration of [Allocation of all scanner settings] (Microfilm Scanner 800II Instructions, page 38, "Function Keys") in the function key by the scanner main unit will become ineffective.*

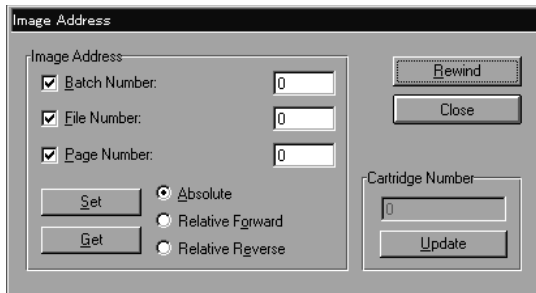
**[600 DPI]**

Toggles the scanning resolution between 300 and 600 dpi. When this key is set to ON, the resolution 600 dpi. When it is switched from ON to OFF, the resolution changes to 300 dpi.

**3** *Press the [OK] button to store the functions assigned to the function keys.*

## Image Address Settings

The “Image Address” dialog box sets the film address and is only valid when the FS Controller III is used.



### <Image Address>

#### [Batch Number]

Tick this checkbox and type in a search number as the batch number. If you do not tick the checkbox and enter a search number, “0” is set.

#### [File Number]

Tick this checkbox and type in a search number as the file number. If you do not tick the checkbox and enter a search number, “0” is set.

#### [Page Number]

Tick this checkbox and type in a search number as the page number. If you do not tick the checkbox and enter a search number, “0” is set.

#### [Absolute]

Specifies the final image address.

#### [Relative Forward]

Specifies the number of pages or files from the current image to the final image.

#### [Relative Reverse]

Specifies the number of pages or files from the current image to the first image.

#### [Set] button

Sets the selected address.

#### [Get] button

Retrieves the current film address.

### <Cartridge Number>

---

When you click the [Update] button, this function displays the number of the loaded film cartridge.

### <Buttons>

---

#### **Rewind**

Rewinds the film.

#### **Close**

When you have finished specifying the settings, click this button to close the dialog box.



# Chapter 3

---

## Using the TWAIN driver

This chapter describes how to use the TWAIN driver.

TWAIN Driver Settings .....	38
Selecting the TWAIN Driver .....	38
TWAIN Driver Default Settings .....	39
Scanner Settings .....	40
Dialog Boxes .....	41
Scanner Settings .....	42
Detailed Settings .....	46
Scanning .....	50
Preview Scan .....	50
Main Scan .....	51

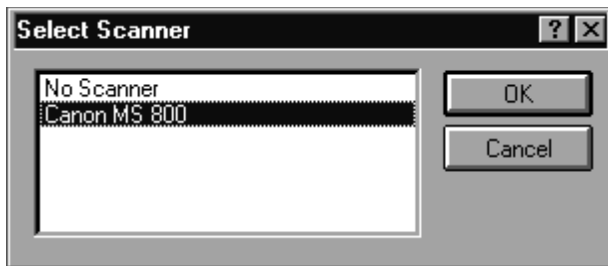
# TWAIN Driver Settings

Before using the TWAIN driver, use the procedure below to specify the TWAIN driver to be used by the Microfilm Scanner 800II.

## Selecting the TWAIN Driver

Use the following procedure to select the TWAIN driver used by the Microfilm Scanner 800II. This operation is required only once following ISIS/TWAIN driver installation and does not need to be repeated unless you connect a scanner other than the Microfilm Scanner 800II.

- 1** Launch the TWAIN-compatible application.
- 2** The “Scanner Settings” dialog box opens.



NOTE

The name of the “Scanner Settings” dialog box varies depending on the application software used. Refer to the manual for your application software for details.

- 3** Select “Canon MS800” and click [OK].



IMPORTANT

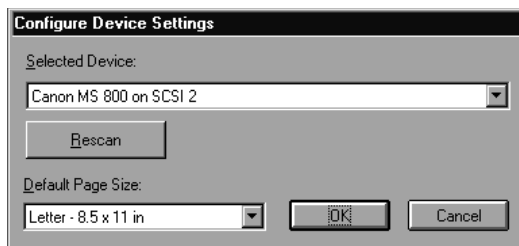
If “Canon MS800” is not listed in the dialog box, the TWAIN driver is not correctly installed. Install the ISIS/TWAIN driver again.

## TWAIN Driver Default Settings

The first time you launch the TWAIN driver following installation, the “Select Scanner” window appears. The paper size set here differs from the default TWAIN driver setting.

### 1 Launch the TWAIN driver.

➔ The “Select Scanner” window appears.



The TWAIN driver startup menu differs depending on the application software being used. Refer to the manual for your application software for details.



“Canon MS800 on SCSI X” (where X is the MS800II SCSI ID) appears in the [Selected Device:] field. If “No Devices Found” appears, the scanner is not connected correctly. Turn off the computer and check the scanner connections.

### 2 Set the default page size.

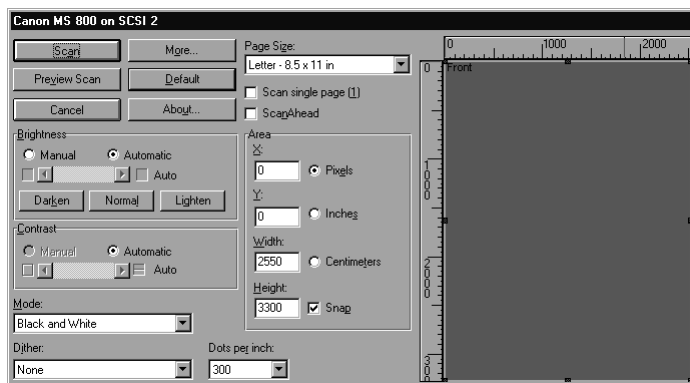
➔ The default page size selected here is set as the default setting.



The page size default setting cannot be changed later. Check the selected page size again before you click the “OK” button.

### 3 Click [OK] to complete the scanner selection.

➔ The “Scanner Settings” dialog box appears.

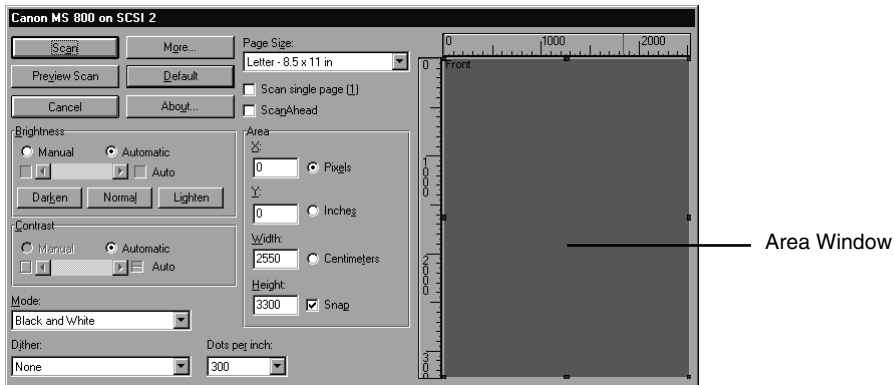


# Scanner Settings

Before you begin scanning, open the “Scanner Settings” dialog box and specify the scanner settings.

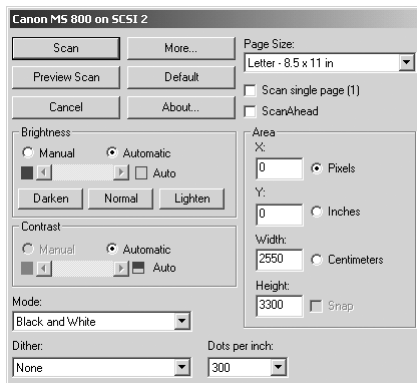
## 1 Launch the TWAIN driver.

➔ The “Scanner Settings” dialog box appears.



NOTE

- The TWAIN driver startup menu differs depending on the application software being used. Refer to the manual for your application software for details.
- When using the CapturePerfect 1.0 supplied with this package, “Area Window” does not appear.

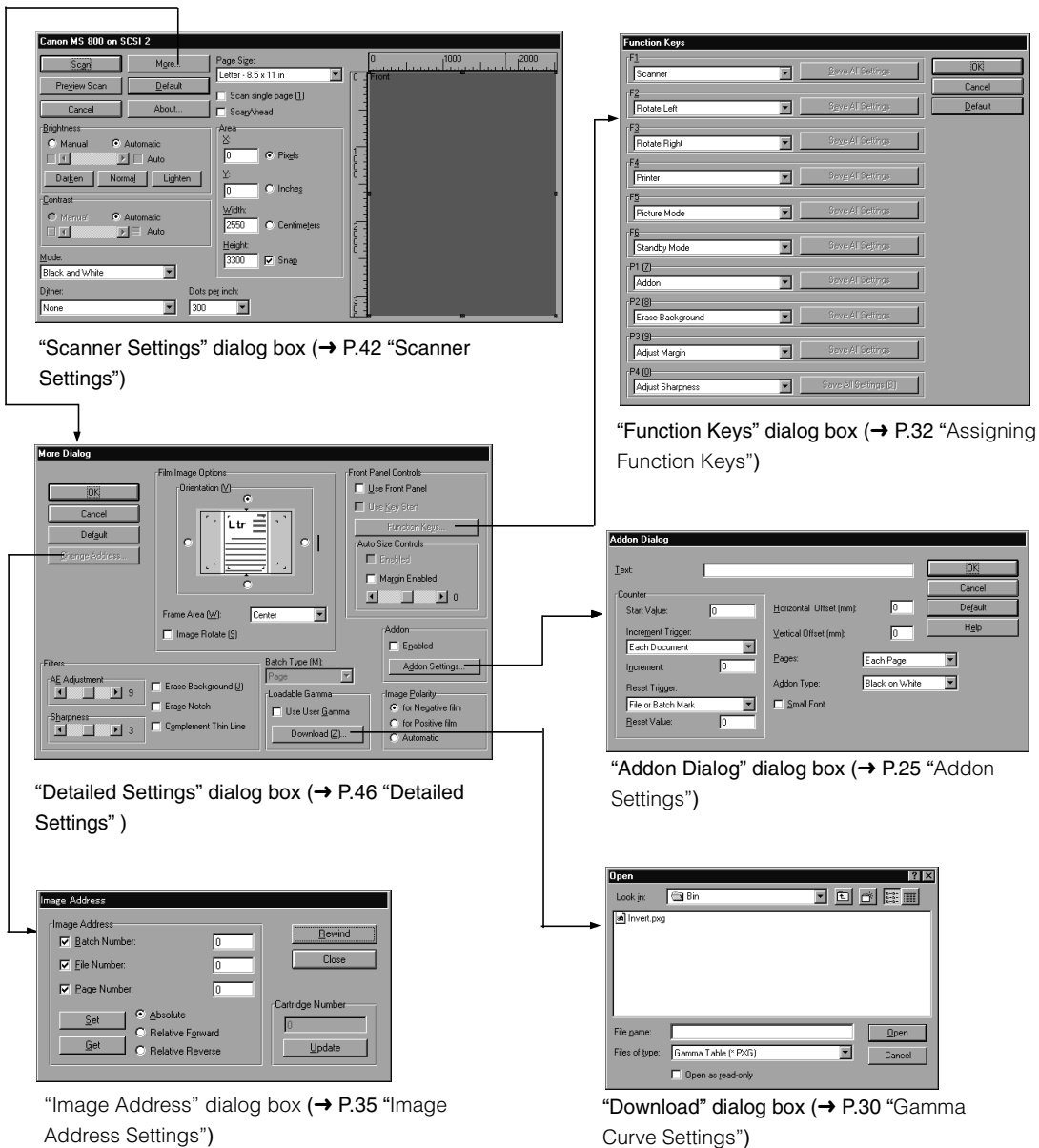


## 2 Open the dialog boxes and set the respective settings for the functions you are using. (→ P.41 “Dialog Boxes”)



## Dialog Boxes

The dialog boxes for specifying the scanner settings are arranged in the hierarchy shown below. Some of the settings and buttons in the dialog box are only displayed or valid when the FS Controller III is connected. For details, refer to the relevant pages for the respective setting or button. Open the dialog boxes for the settings you intend to use and specify the appropriate settings.

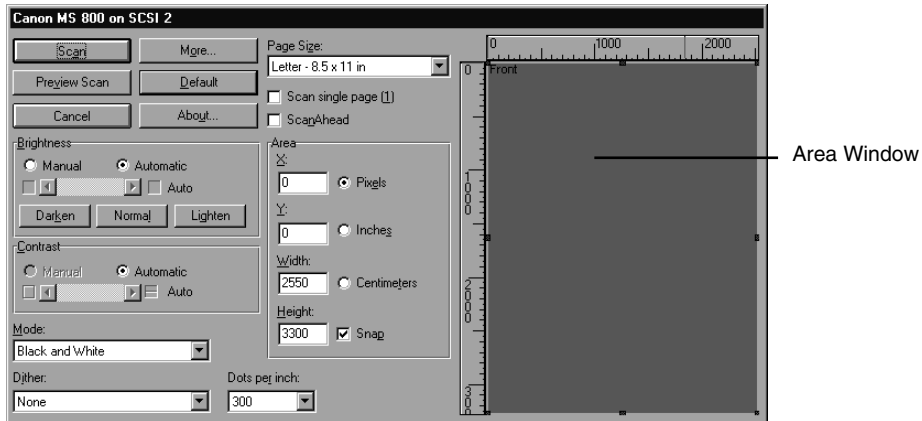


*For more information on assigning function keys and specifying the add-on, gamma curve and image address settings, see Chapter 2, “Using the ISIS Driver”.*

## Scanner Settings

Use this dialog box to specify the scanning parameters.

The basic settings are specified from the “Canon MS800 on SCSI X” dialog box.



*When using the CapturePerfect 1.0 supplied with this package, “Area Window” does not appear.*

### <Scan Page Settings>

#### Page Size

Selects one of the following as the size of the document to be scanned.

- A3 - 297 x 420 mm
- A4 - 210 x 297 mm
- A5 - 148 x 210 mm
- A6 - 105 x 148 mm
- B4(ISO) - 250 x 353 mm
- B4(JIS) - 257 x 364 mm
- B5(ISO) - 176 x 250 mm
- B5(JIS) - 182 x 257 mm
- Ledger - 11 x 17 in
- Legal - 8.5 x 14 in
- Letter - 8.5 x 11 in
- Statement - 8.5 x 5.5 in
- Scanner's maximum size

If the document scanned is larger than the specified size, the outside edges of the document will be cropped. Conversely, if the scanned document is smaller than the specified size, a black margin will be shown around the scanned image.

If Auto Size Controls (→ P.47) is specified in the “More Dialog” dialog box, this setting is ignored.

**[Scan single page] checkbox**

Tick this checkbox to scan single pages only. When this checkbox is ticked, the "Batch" checkbox is disabled.

**[ScanAhead] checkbox**

This checkbox is displayed when the FS Controller III is used. When this checkbox is ticked, continuous scanning is performed using the batch mode specified in the Detail Settings dialog box. Refer to the FS Controller III Instructions for details.

If a carrier other than the FS Controller III is used, this checkbox is displayed when "Use Key Start" (→ P.47) in the Detail Settings dialog box is enabled.

This checkbox is disabled when the "Page" checkbox is ticked.

**<Scan Parameter Settings>****Brightness**

Automatically or manually sets the brightness of the image scanned. If the automatic setting is selected, the brightness is set automatically. When manual setting is selected, a value from 1 to 255 can be specified. Higher settings increase the amount of exposure to give a brighter image and lower values decrease the amount of exposure to give a darker image.

**[Darken] button**

Darkens the entire image. Sets a value of 64.

**[Normal] button**

Sets the standard level of brightness. Sets a value of 128.

**[Lighten] button**

Lightens the entire image. Sets a value of 192.

**Contrast**

If the [Brightness] setting is selected manually, the [Contrast] setting is also set manually. This setting specifies a value from 1 to 255 as the contrast adjustment. If the [Brightness] setting is selected automatically, the [Contrast] setting is also set automatically and the image contrast cannot be adjusted here.

**Mode**

Selects the scanning mode.

**[Black and White]**

Scans film with content such as text and line drawings in black and white.

**[16 / 256 - level Gray]**

Imports the scanned image using multiple values. Used for situations where multi-value data is required, such as where image processing of the scanned image is performed on a PC.



- To scan an image in grayscale, additional memory must be installed in the scanner. Contact an authorized Canon service representative for details.
  - The CapturePerfect 1.0 supplied with this package does not support "16 - level Gray".
- When you perform scanning in grayscale, select "256 - level Gray".

**Dither**

Selects the binary conversion method.

**[None]**

Scans the image as simple binary data. Select this option to scan film with content such as text and line drawings in black and white.

**[Fine]**

Scans film with content that has minimal variations in density so that the level of contrast is enhanced.

**[Picture]**

Best for photos and images that contain halftones. Error diffusion is used to simulate and reproduce halftones.

**Dots per Inch (Resolution)**

Sets the resolution used (in dots per inch (dpi)) when the document is scanned. Resolutions of 200, 300 or 600 can be selected.

**<Area>**

---

**Coordinate locations**

**[X]**

In this field, enter the X coordinate from the top-left corner of the scanning area.

**[Y]**

In this field, enter the Y coordinate from the top-left corner of the scanning area.

**[Width]**

In this field, enter width of the scanning area.

**[Height]**

In this field, enter height of the scanning area.

**Units**

**[Pixels]**

Shows the coordinate locations in pixels. When the [Snap] checkbox is ticked, locations are shown in multiples of 32 pixels.

**[Inches]**

Shows the coordinate locations in inches. When the [Snap] checkbox is ticked, locations are shown in multiples of 1/8 of an inch.

**[Centimeters]**

Shows the coordinate locations in centimeters. When the [Snap] checkbox is ticked, locations are shown in multiples of 0.1 cm.

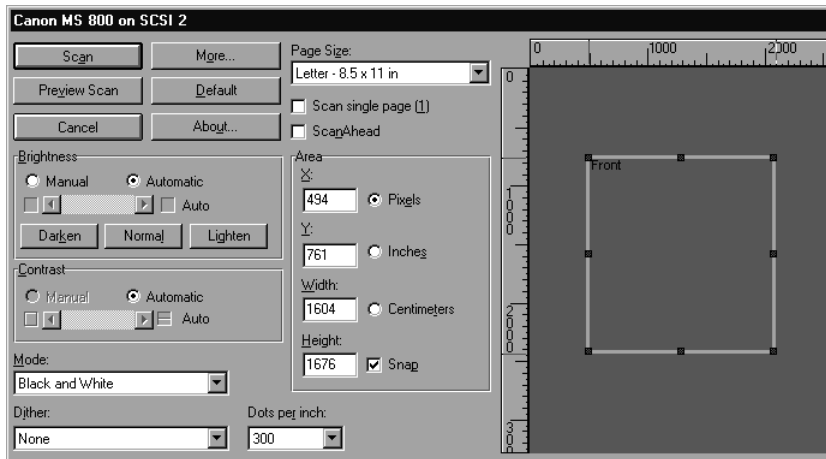
**[Snap] checkbox**

Automatically adjusts the coordinate locations for the scanning area to the nearest rounded value.

**<Area Window>**

The scanning area for the specified page size is shown in the Area window. The size of the Area window changes depending on the page size.

The size of the scanning area can be adjusted by dragging the black squares ■ around the edges of the area. Also, when you move the cursor into the adjusted area, the cursor changes to a cross shape (⊕) and the entire scanning area can then be moved around by dragging the cross-shaped cursor.



If you are using an SVGA display (800 x 600 pixels), note that the dialog box will not all fit on the screen when you select “Statement” or “Scanner’s maximum” as the page size.

3

Using the TWAIN driver

**<Buttons>****Scan**

Starts scanning based on the specified settings. (→ P.51 “Main Scan”)

**Preview Scan**

Performs a preview scan based on the specified settings. (→ P.50 “Preview Scan”)

**Cancel**

Stops scanning and closes the dialog box.

**More**

Opens the “More Dialog” dialog box.

**Default**

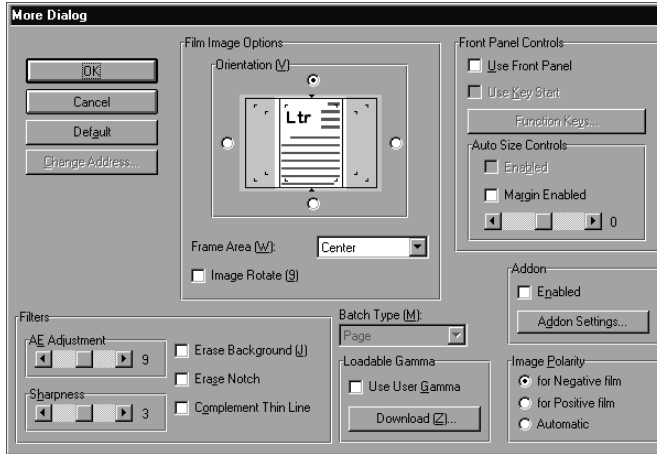
Restores the default settings.

**About**

Displays the software version information.

## Detail Settings

Use this procedure to set the detailed scanning parameters. Use the “Detailed Settings” dialog box to specify the settings.



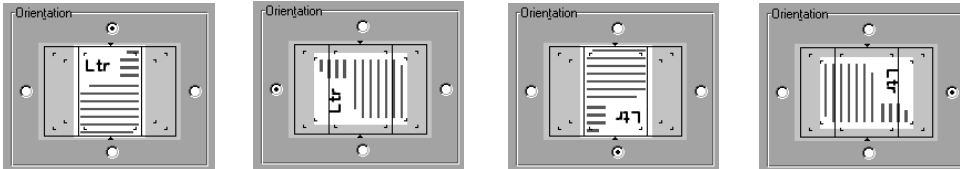
NOTE

*The Batch Scanning Mode function and “Change Address” button are only valid when the FS Controller III is used.*

### <Film Image Options>

#### Orientation

Sets the orientation (top, bottom, left and right) for the selected page size.



NOTE

*If the page size is larger than A4, the top and bottom orientations cannot be selected. Also, if the scanner’s maximum size is selected, the left and right rotation settings cannot be selected.*

#### Frame

Selects the reference position for scanning relative to the screen.

##### [Center]

Scans the specified page size using the center of the screen as the reference position. (→ “Setting the Scanning Position” on P.35 of the Microfilm Scanner 800II Instructions)

##### [Left]

Scans the specified page size using the left edge of the screen as the reference position. (→ “Setting the Scanning Position” on P.35 of the Microfilm Scanner 800II Instructions)

**[Separate]**

Scans the image as 2 separate pages using the center of the image as the divide.  
(→ “Setting the Scanning Position” on P.35 of the Microfilm Scanner 800II Instructions)

**[Overlay]**

Selects overlay (multiple image) scanning.  
(→ “Function Keys” on P.38 of the Microfilm Scanner 800II Instructions)

**[Image Rotate] checkbox**

Rotates the scanned image 90° to the right (clockwise) for printing.

**<Front Panel Controls>**

These options enable various operations and setting modifications performed from the scanner’s front panel.

**[Use Front Panel] checkbox**

Enables operations performed from the scanner’s front panel.

**[Use Key Start] checkbox**

When this option is selected, the Start key on the scanner’s front panel turns green when the command to begin scanning is issued and the scanner waits for the Start key to be pressed. This allows you to check the image to be scanned before pressing the Start key to perform the scan.

**[Function Keys] button**

Opens the “Function Keys” dialog box used to set the functions assigned to function keys. (→ P.32 “Assigning Function Keys”)

**Auto Size Controls**

When you enable the Auto Size Controls option, the “Scan Size” and “Trimming/Border” settings on the scanner are also enabled and the “Page Size” setting is ignored.

(→ “Selecting the Scan Size” on P.35 and “Trimming/Border settings” on P.36 of the Microfilm Scanner 800II Instructions)

**[Enabled] checkbox**

Enables the Auto Size Controls option.

**[Margin Enabled] checkbox**

“Read Margins” sets the top, bottom, left and right margins for the specified scan size. The margin size can be set to a value between –10 (scans an area 10 mm smaller) and 10 (scans an extra 10 mm).

For example, you can enter a positive value when you want to enlarge the scanning area slightly to ensure that the edges of the document are not cropped. Conversely, you can enter a negative value when you want to reduce the scanning area slightly to avoid a black border around the resulting scanned image.

The margin setting specified here is also applied in the Auto Size Controls option.

### <Filters>

---

These settings specify the image processing filters used.

#### **AE Adjustment**

This option specifies fine adjustment for the automatic brightness adjustment and is enabled when [Black and White] is selected in the Mode setting. AE fine adjustment is valid when the "Automatic" option is selected for [Brightness] in the "Canon MS 800 on SCSI X" dialog box and can be set to any value between 1 and 17.

#### **Sharpness**

This setting sets the levels for text outline enhancement and for the softening of image gradations in photographs, etc. This setting is valid when the Mode setting is [Black and White] and can be set to a value between 1 and 5.

#### **[Erase Background] checkbox**

This option automatically erases speckling in the background of text, line drawings, etc., and is valid when the Mode is set to [Black and White] and the Dither setting is [None] or [Fine].

#### **[Erase Notch] checkbox**

The "Erase Notch" option automatically erases portions of the image (notches) that overlap the outline and is valid when the Mode is set to [Black and White] and the Dither setting is [None] or [Fine].

#### **[Complement Thin Line] checkbox**

The [Complement Thin Line] option reduces the incidence of fading and gaps in faint or broken lines when thin lines or faint documents are scanned. This option is valid when the Mode is set to [Black and White] and the Dither setting is [None] or [Fine].

### <Batch Type>

---

Batch Type permits consecutive scanning and can be selected when the FS Controller III is used. Refer to the FS Controller III Instructions for details.

#### **[Page]**

Specifies consecutive scanning one page at a time.

#### **[File]**

Specifies consecutive scanning one file at a time.

#### **[Batch]**

Specifies consecutive scanning one batch at a time.



When you select Batch mode, always ensure that OFF is selected in the Key Start setting (→ P.47, "Front Panel Controls"). Selecting ON as the Key Start setting disables the Batch mode setting. If you want to use Batch mode when the Key Start setting is ON or if you want to use Batch mode from FS Controller I, select Batch mode from the keyboard supplied with the FS Controller. Refer to your FS Controller Instructions for details.



**<Loadable Gamma>****[Use User Gamma] checkbox**

Check this option to use the downloaded gamma curve data. When gamma curve data is used, the image polarity setting is ignored.

**[Download] button**

Selects and downloads the gamma curve data. The downloaded gamma curve data is valid when the [Use User Gamma] checkbox is ticked. (→ P.30, “Gamma Curve Settings”)

**<Add on>****[Enabled] checkbox**

Tick this checkbox to imprint the information specified in the Add on setting (→ P.25) on the scanned image.

**[Add on Setting] button**

Opens the “Add on Setting” to specify the settings for the Add on function that adds text to a scanned image. (→ P.25 “Addon Settings”)

**<Image Polarity>**

Selects the film polarity.

**[for Negative film]**

Reverses black and white in a negative film image and displays a positive image.

**[for Positive film]**

Displays positive film as a positive image.

**[Automatic]**

Automatically detects whether the film is negative or positive and displays a positive image.

**<Buttons>****OK**

Applies the selected settings and closes the dialog box.

**Cancel**

Closes the dialog box without applying the selected settings.

**Default**

Restores the settings specified at shipment.

**Change Address**

This button opens the “Image Address” dialog box (→ P.35) so that the film address to be scanned can be changed and is enabled when the FS Controller III is used. Refer to the FS Controller III Instructions for details.

# Scanning

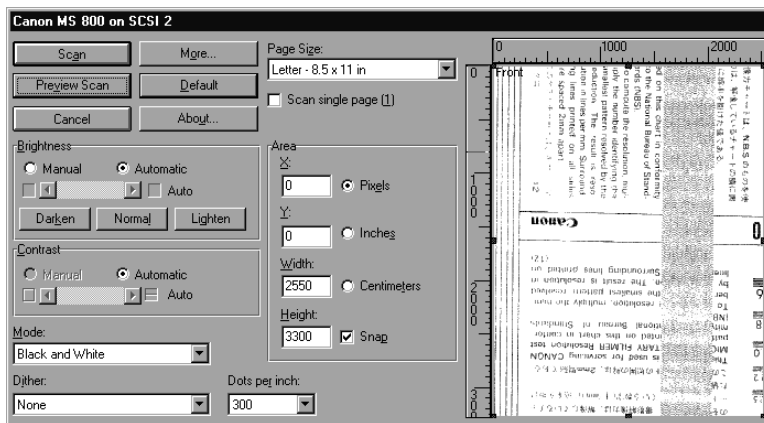
Scanning consists of a preview scan, which is used to check the area scanned, and the main scan, which actually scans the image and imports it into the application software.

## Preview Scan

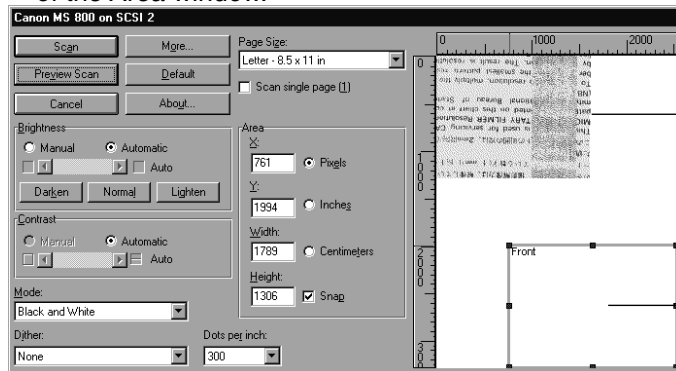
To allow the area to be scanned to be checked, the preview scan scans the screen image and displays the scanned image in the Area window. The image in a preview scan cannot be imported.

- 1 Specify the scanner settings.
- 2 Click the "Preview Scan" button.

➔ The scanner performs a preview scan and displays a preview image in the Area window.



- The preview scan image for the specified area is displayed in the upper left of the Area window.



Preview image

Scan area

- On the CapturePerfect 1.0 supplied with this package, the picture doesn't appear when "preview scanning" is performed, since the "Area Window" is not displayed.

## Main Scan

The main scan scans the screen image and imports the scanned image into the application software.

**1** Check the scanner settings.

**2** Click the “Scan” button.

⇒ A message is displayed during the scan indicating that the scan is in progress.



⇒ In the case of CapturePerfect 1.0, Setting dialog box closes when you click the “Scan” button. The scanning is performed when scan commands is selected on the menu. For details, refer to the CapturePerfect 1.0 Help.



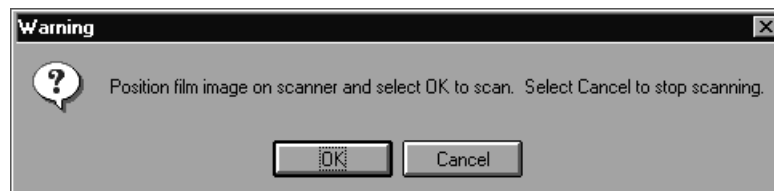
NOTE

*If you begin a scan when the [Use Key Start] checkbox is ticked, the Start key on the scanner’s front panel turns green and the scanner waits for the Start key to be pressed. This allows you to check the image to be scanned before pressing the Start key to perform the scan.*

*Click the [Cancel] button to stop a scan in progress.*

*If the [Page] checkbox is ticked, only one page is scanned and then scanning ends.*

*If the [Page] checkbox is not ticked, the scanner scans one page and then displays the message shown below. Check the film position and click [OK] to continue scanning. Click [Cancel] to end scanning.*



3

Using the TWAIN driver

# Index

## A

Addon Settings .....	25
Assigning Function Keys .....	32
[600 DPI] .....	34
[Addon] .....	33
[Adjust Margin] .....	33
[Adjust Sharpness] .....	33
[Auto Center Image] .....	33
[Darken Screen] .....	33
[Erase Background] .....	33
[Lighten Screen] .....	33
[Margin Scanning] .....	33
[New File] .....	33
[Overlay] .....	33
[Picture Mode] .....	33
[Printer] .....	33
[Rotate Left] .....	32
[Rotate Right] .....	32
[Save Settings] .....	34
[Scanner] .....	32
[Skew Correction] .....	33
[Standby Mode] .....	33

## B

Batch Type .....	21
[Batch] .....	21
[File] .....	21
[Page] .....	21
Buttons .....	17, 36
Close .....	36
Rewind .....	36

## C

Canon MS800 .....	11
Cartridge Number .....	36
CD-ROM drive .....	7
Counter .....	27

[Small Font] checkbox .....	29
Add on Type .....	28
Horizontal Offset .....	28
Increment .....	27
Increment Trigger .....	27
Pages .....	28
Reset Trigger .....	27
Reset Value .....	28
Start Value .....	27
Vertical Offset .....	28

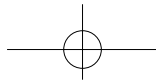
## D

Detailed Settings .....	21
Detect Job Separators .....	22
[Batch] checkbox .....	22
[Enabled] checkbox .....	22
[File] checkbox .....	22
Dialog Boxes .....	13
"Scan Area" dialog box .....	13
"Addon Dialog" dialog box .....	13
"Canon MS800 on SCSI X" dialog box .....	13
"Function Keys" dialog box .....	13
"Image Address" dialog box .....	13
"More Dialog" dialog box .....	13
"Open" dialog box .....	13

## F

Filters .....	24
[Complement Thin Line] checkbox .....	24
[Erase Background] checkbox .....	24
[Erase Notch] checkbox .....	24
AE Adjustment .....	24
Sharpness .....	24
Front Panel Controls .....	22
[Function Keys] button .....	22
[Use Front Panel] checkbox .....	22

[Use Key Start] checkbox.....	22	Area .....	18
Auto Size Controls .....	22	Area Window .....	19
[Enabled] checkbox .....	22	Buttons .....	20
[Margin Enabled] checkbox .....	23	Film Image Options .....	18
<b>G</b>		<b>W</b>	
Gamma Curve Settings .....	30	Windows 2000 .....	7
<b>I</b>		<b>W</b>	
Image Address .....	35		
[Absolute] .....	35		
[Batch Number] .....	35		
[File Number] .....	35		
[Get] button .....	35		
[Page Number] .....	35		
[Relative Forward] .....	35		
[Relative Reverse] .....	35		
[Set] button .....	35		
Image Address Settings .....	35		
Image Polarity .....	23		
[Automatic] .....	23		
[for Negative film] .....	23		
[for Positive film] .....	23		
<b>L</b>		<b>W</b>	
Loadable Gamma .....	23		
[Download] button .....	23		
[Use User Gamma] checkbox .....	23		
<b>P</b>		<b>W</b>	
Preparing Gamma Curve Data .....	31		
<b>S</b>		<b>W</b>	
Scanner Settings .....	14		
16 / 256 - level Gray .....	14		
Black and White .....	14		
Dither .....	14		
Frame .....	16		
Image Rotate .....	16		
Orientation .....	16		
Scanning Area Settings .....	18		



# Index

---