

Thank you for purchasing the Canon DR-2010C/DR-2510C Document Scanner. The manuals for this scanner are made up of the "Easy Start Guide (this manual), "Reference Guide", and the digital manuals of the "User Manual" and "CapturePerfect 3.0 Operation Guide" included on the setup disk. Before you use this scanner, make sure to thoroughly read these manuals and understand them. After you have finished reading these manuals, store them in a safe place for future reference.

Easy Start Guide (This Manual)
This contains the procedures to setup the scanner for use. Follow these procedures to setup your scanner.

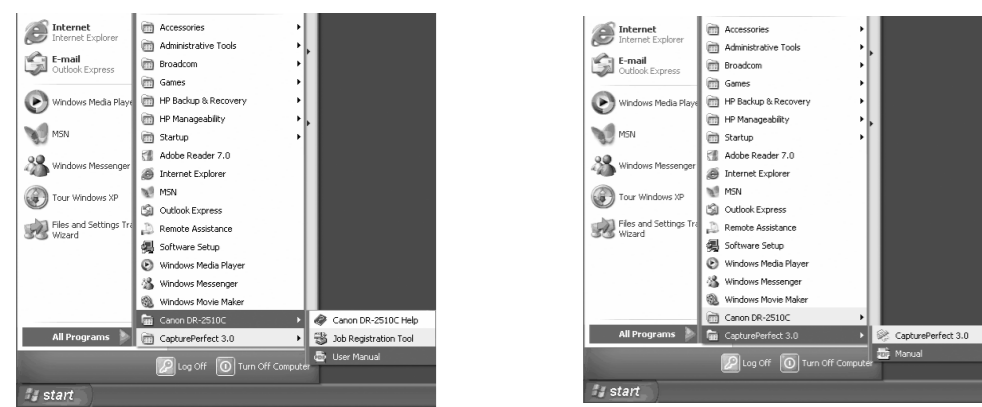
Reference Guide
This manual outlines the specific items for using your scanner. For details refer to the User Manual.

User Manual (Digital Manual)
This manual describes the overall handling of the scanner from setup to use, maintenance and troubleshooting, the ISIS/TWAIN driver for using the scanner, and the Job Registration Tool.

CapturePerfect 3.0 Operation Guide (Digital Manual)
This manual is the operations guide for the Canon document scanner application, CapturePerfect 3.0.

The digital manuals are document files in the PDF (Portable Documents Format) format. The software installed registers the manuals in the following location.

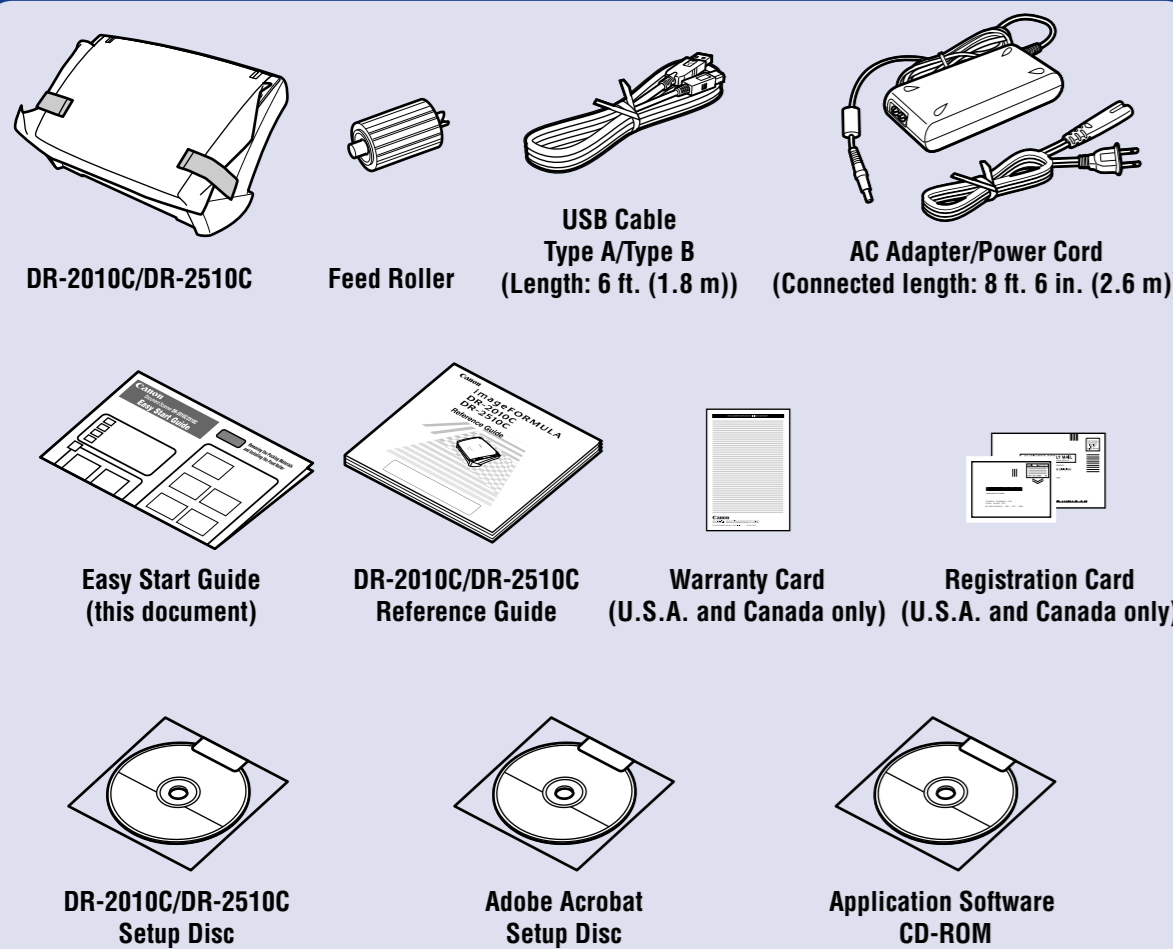
STEP3



User Manual CapturePerfect 3.0 Operation Guide

STEP 1 Checking the Accessories

When you unpack your scanner, make sure that it contains all of the following accessories. If any of the items listed below are missing or damaged, contact your local authorized Canon dealer or service representative.



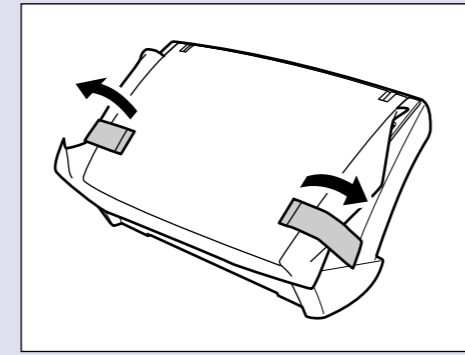
● Items included in this manual are subject to change without notice.
● You must keep the machine's packaging and packing materials for storing or transporting the machine.

After checking the package contents, you need to prepare the scanner for use. **STEP2**

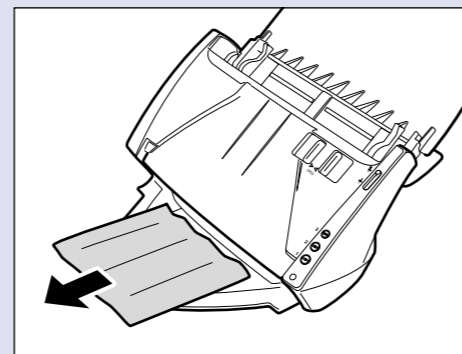
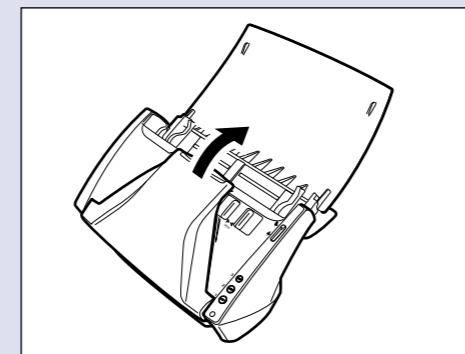
STEP 2 Removing the Packing Materials and Installing the Feed Roller

Remove the scanner from the box, remove the orange tape and protective sheets from the scanner, and install the feed roller on the scanner body.

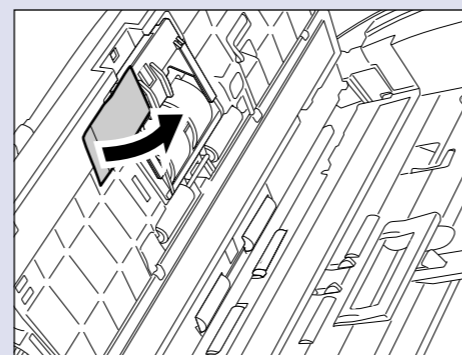
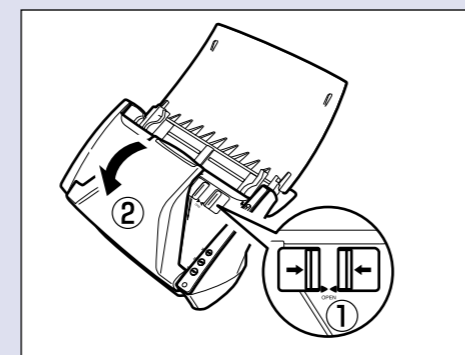
1. Peel off the pieces of orange tape from the outer casing, and remove the protective sheets.



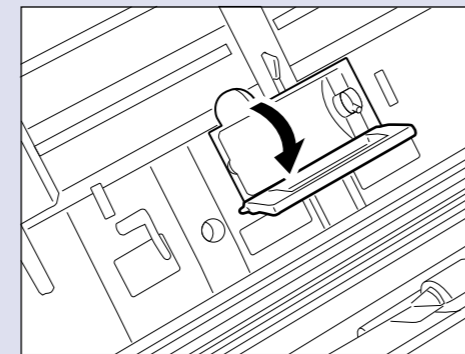
2. Open the document feed tray and the eject tray, and remove the protective sheet.



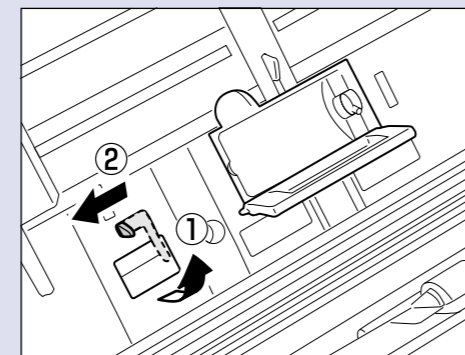
3. Open the front unit at (1) and (2), and remove the orange tape fastening the document holding guide.



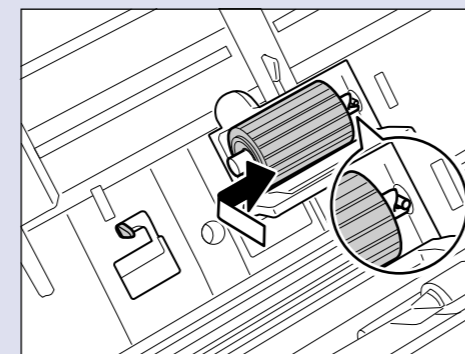
4. Open the roller cover.



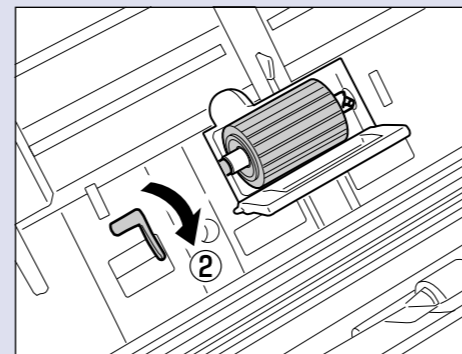
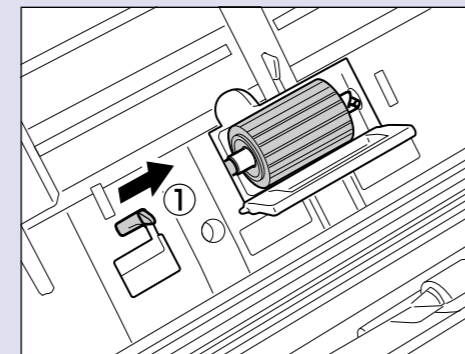
5. Lower the roller lock lever (1), and slide it towards the left (2).



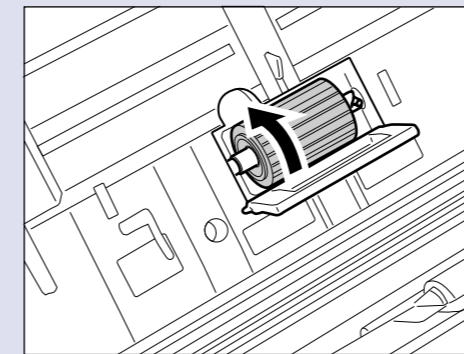
6. Load the feed roller, align the notch on the roller with the shaft on the scanner body.



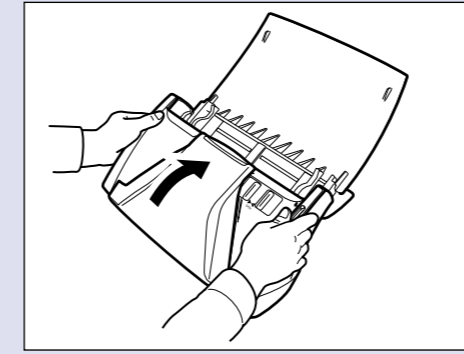
7. Slide the roller lock lever to the right, fit the lever feed roller into the hole on the left of the roller (1), and push down the roller lock lever to lock the feed roller shaft (2).



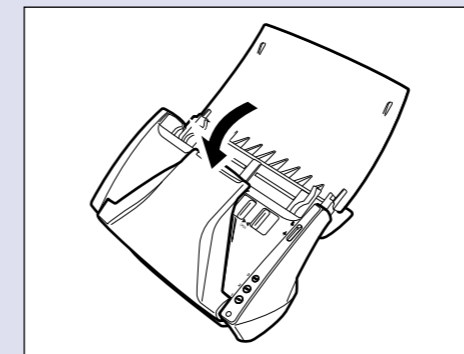
8. Close the roller cover. Make sure that the roller cover clicks into place.



9. Gently push in the front unit on its left and right sides to close the front unit. Make sure that the front unit clicks into place.



10. Close the document feed tray.



The scanner is now ready for use. Next, you need to install the scanner software. **STEP3**

STEP 3 Installing the Software

Install the software before connecting the scanner to the computer.

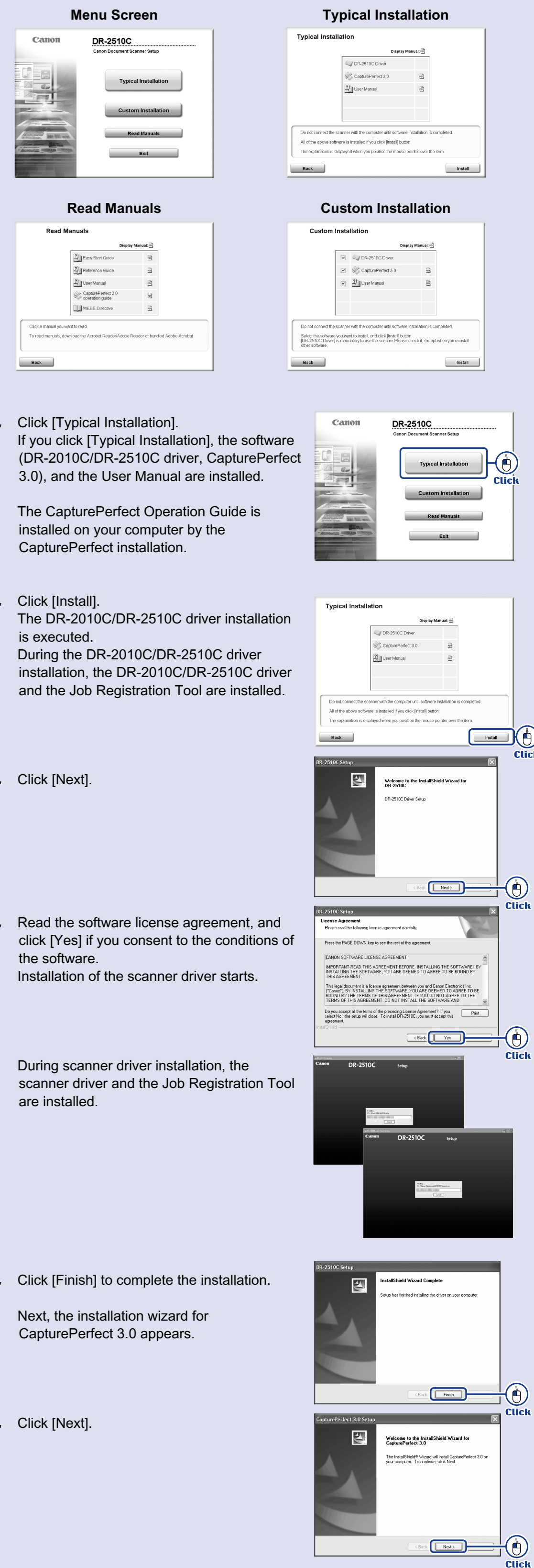
Caution Before installing the software, make sure your computer is correctly running one of the following versions of Windows. For details, refer to the DR-2010C/DR-2510C Reference Guide.

- Windows 2000 Professional SP4 or later
- Windows XP Home Edition SP2 or later
- Windows XP Professional SP2 or later
- Windows XP Professional x64 Edition
- Windows Vista Home Basic
- Windows Vista Home Premium
- Windows Vista Business
- Windows Vista Ultimate
- Windows Vista Enterprise

Close all other applications before installing the software.

1. Log on to Windows with an account that has administrator privileges.
2. Insert the DR-2010C/DR-2510C Setup Disc into the PC's CD-ROM drive. The setup wizard automatically starts up when you insert the CD-ROM into the CD-ROM drive. If the setup wizard does not start up, execute setup.exe in the CD-ROM.

The DR-2010C/DR-2510C setup menu is constructed of the following screens:



3. Click [Typical Installation]. If you click [Typical Installation], the software (DR-2010C/DR-2510C driver, CapturePerfect 3.0), and the User Manual are installed.

The CapturePerfect Operation Guide is installed on your computer by the CapturePerfect installation.

4. Click [Install]. The DR-2010C/DR-2510C driver installation is executed. During the DR-2010C/DR-2510C driver installation, the DR-2010C/DR-2510C driver and the Job Registration Tool are installed.

5. Click [Next].

6. Read the software license agreement, and click [Yes] if you consent to the conditions of the software. Installation of the scanner driver starts.

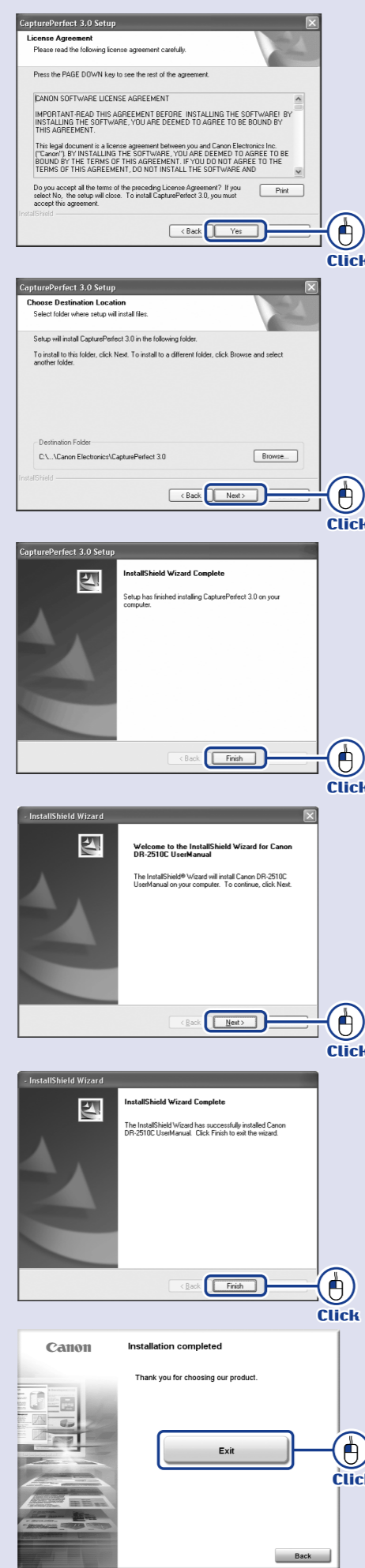
During scanner driver installation, the scanner driver and the Job Registration Tool are installed.

7. Click [Finish] to complete the installation.

Next, the installation wizard for CapturePerfect 3.0 appears.

8. Click [Next].

9. Read the software license agreement, and click [Yes] if you consent to the conditions of the software.
10. Check the destination folder and click [Next]. Installation of CapturePerfect 3.0 starts.
11. Click [Finish] to complete the installation of CapturePerfect 3.0. Next, the User Manual installation wizard appears.
12. Click [Next]. Installation of the User Manual starts.
13. Click [Finish] to complete the installation of the User Manual.
14. When all installations are complete, the Installation completed screen appears. Click [Exit] to exit the installer. (Click [Back] to return to the menu screen.)



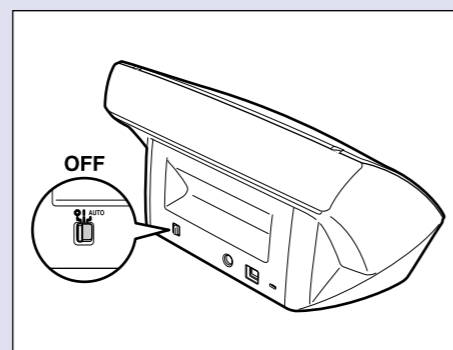
This completes the software installation. Next, you need to connect the scanner to your computer. (STEP4)

STEP 4 Connecting the Scanner to Your PC

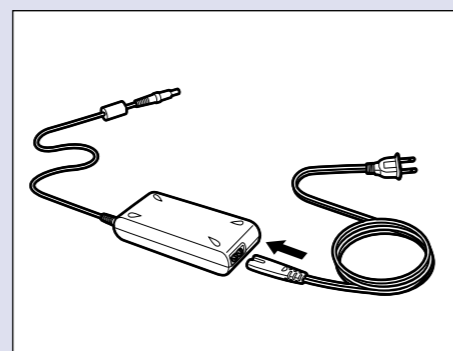
Perform the following steps to connect the scanner to your PC with a USB cable.

- Caution**
- Use only the AC adapter and power cord included in this package.
 - Connect the DR-2010C/DR-2510C to your computer while the DR-2010C/DR-2510C is turned OFF.

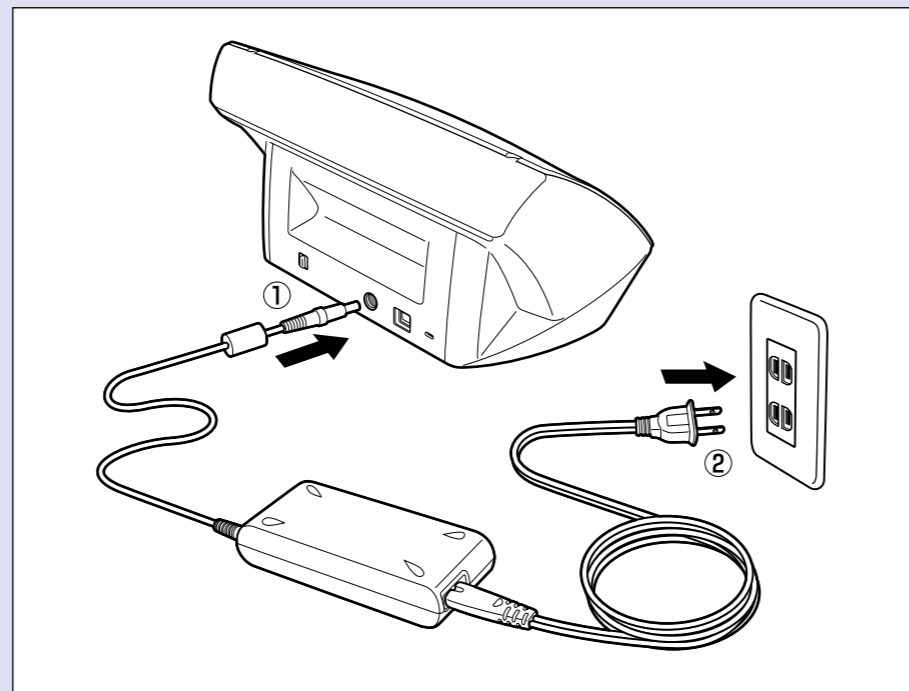
1. Make sure that the power switch of the scanner is turned OFF. If the power switch is ON, turn it OFF.



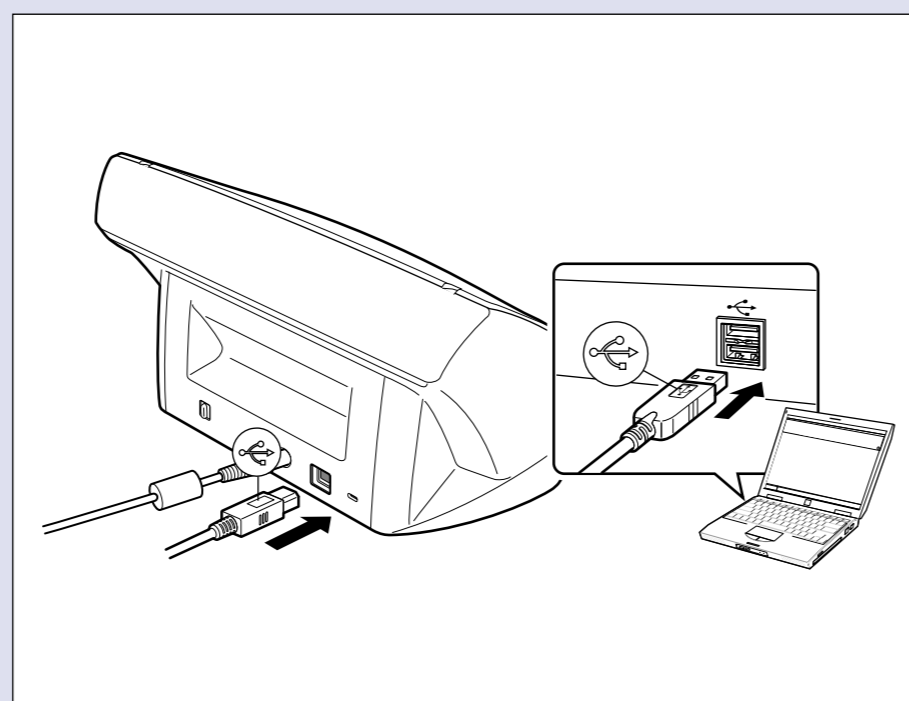
2. Connect the power cord to the AC adapter.



3. Plug the AC adapter into the connector located on the back side of the machine in the order of (1) and (2).



4. Connect the USB cable included with the scanner to the scanner and your PC.



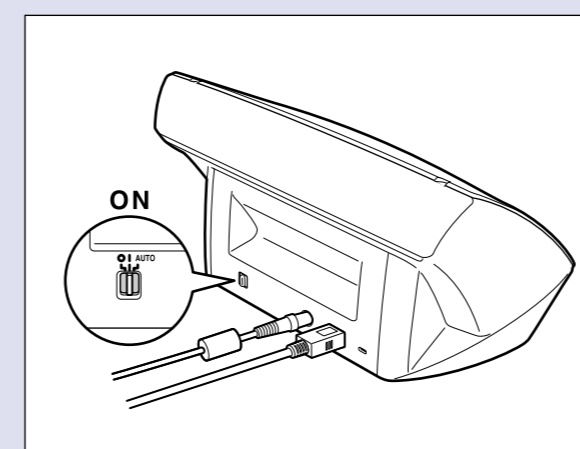
The scanner and computer are connected. Next, turn the scanner ON and Windows recognizes it. (STEP5)

STEP 5 Turning the Scanner Power ON (Scanner Recognition)

When you turn the scanner connected to the PC ON, the plug-and-play function recognizes the scanner, and the device driver is automatically installed.

- Caution**
- Be sure to log on with administrator privileges when logging on to Windows.
 - If you turn the power OFF, wait at least 10 seconds before turning it ON again.
 - When you are not using the scanner for a long period of time, be sure to disconnect the power cord from the outlet for safety.

1. Make sure that the scanner and computer are connected.
2. Turn the scanner ON. The power indicator is lit green.



3. Turn ON your computer.
4. Windows automatically recognizes the DR-2010C/DR-2510C as new hardware.

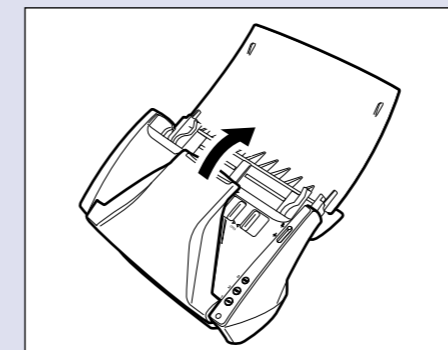


The scanner is now correctly recognized by your computer. Next, select the scanner in an application. (STEP6)

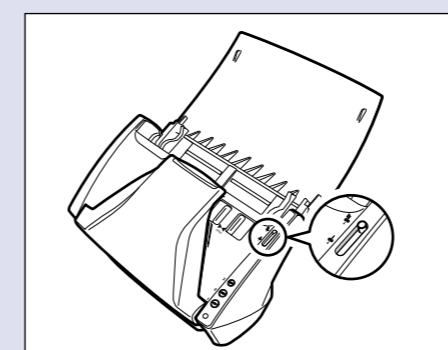
STEP 6 Scanning

When you have finished installing the software and the scanner has been recognized, you can load and scan a document. With this scanner, scanning can be performed with the job function by simply pressing the scan button. Follow the steps below to load a document, press the scan button, and test that your document is scanned properly.

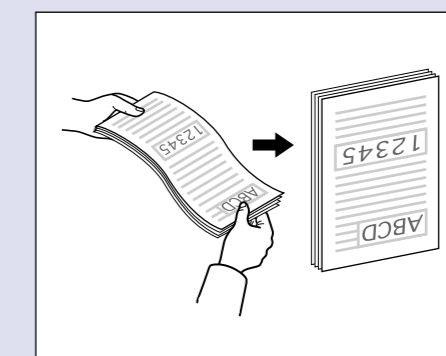
1. Open the document feed tray.



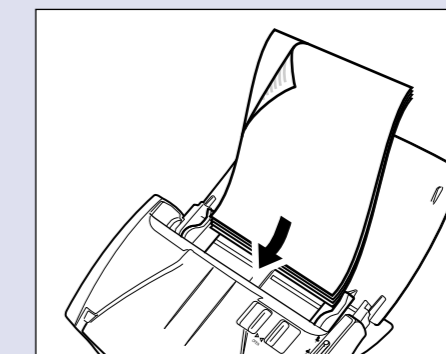
2. Switch the feed selection lever on the side to the page separation mode (☺). Be careful, because when the feed selection lever is set to ☹ (bypass mode), document pages feed as a stack. For details on the feed selection lever, refer to the DR-2010C/DR-2510C User Manual.



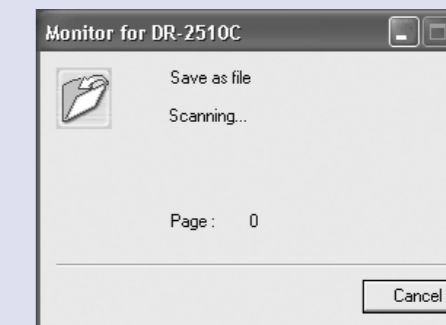
3. Thoroughly fan the pages of your documents, and shift the pages so that the top edge of the first page is the bottommost page. (Place your documents on the scanner so that the top edge is facing down.)



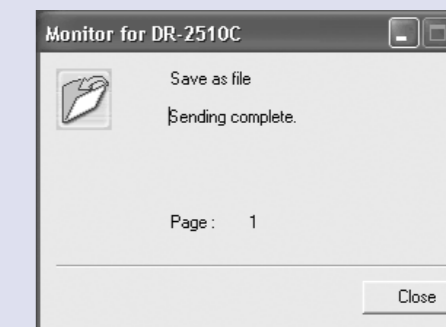
4. Place your documents so the top edge is facing down and the rear side is facing towards you. Adjust the document guide adapter to fit the size of the documents.



5. Press Job Button 3 (the top button). "Monitor for DR-2010C" or "Monitor for DR-2510C" is displayed at the bottom right of the screen and scanning starts.



6. When "Sending complete" is displayed on the "Monitor for DR-2010C/DR-2510C", this indicates that scanning has ended. Click "Close" to close the "Monitor for DR-2010C" or "Monitor for DR-2510C".



- Memo**
- The initial settings for the job button functions are as follows:
 - Job Button 1: Start
 - Job Button 2: Stop
 - Job Button 3: Save to a File
 - The function of the job button can be changed. For details, see "Scanning with the Job Function," in the User Manual.
 - Scanned image files are saved in the [My Pictures] folder in [My Documents]. (Default)
 - Image files that are saved according to the default settings are saved as PDF files with a 17-digit file name. This file name indicates the date and time that the image was saved.
 - You can change the scan settings by using the Job Registration Tool registered in the Programs menu.

The setup of the DR-2010C/DR-2510C is now complete.

- This completes the setup of the DR-2010C/DR-2510C. Before you start using the DR-2010C/DR-2510C, be sure to thoroughly read the DR-2010C/DR-2510C User Manual and Reference Guide.
- For information on using CapturePerfect 3.0, refer to the operation guide registered in the Programs menu.