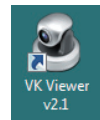


■ Launching VK Viewer

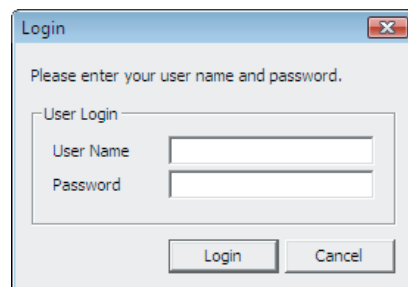


- 1 Double-click the [VK Viewer v2.1] desktop icon.
The connect option menu (Startup Screen) for the Storage Server is displayed.

* Different icon is displayed for VK-Lite.



- 2 Select [Master Storage Server] and click [Connect].
If you select [localhost] or [Use IP address], the [Login] dialog box appears.



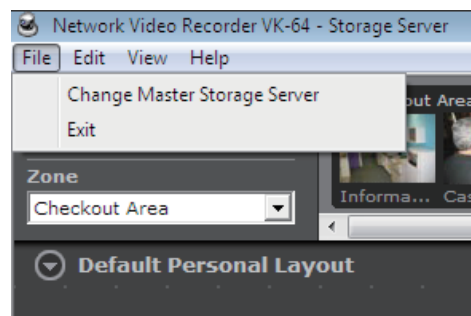
- 3 Enter your [User Name] and [Password] and click [Login].
VK Viewer starts up.
Make a note of your user name and password here.

User Name	
Password	



- Note that the login information is case-sensitive.
- Check with the system administrator for your user name and password.
- If you note down your user name and password in this guide, take particular care to ensure that this does not lead to unwanted disclosure of your login details.

■ Exiting VK Viewer

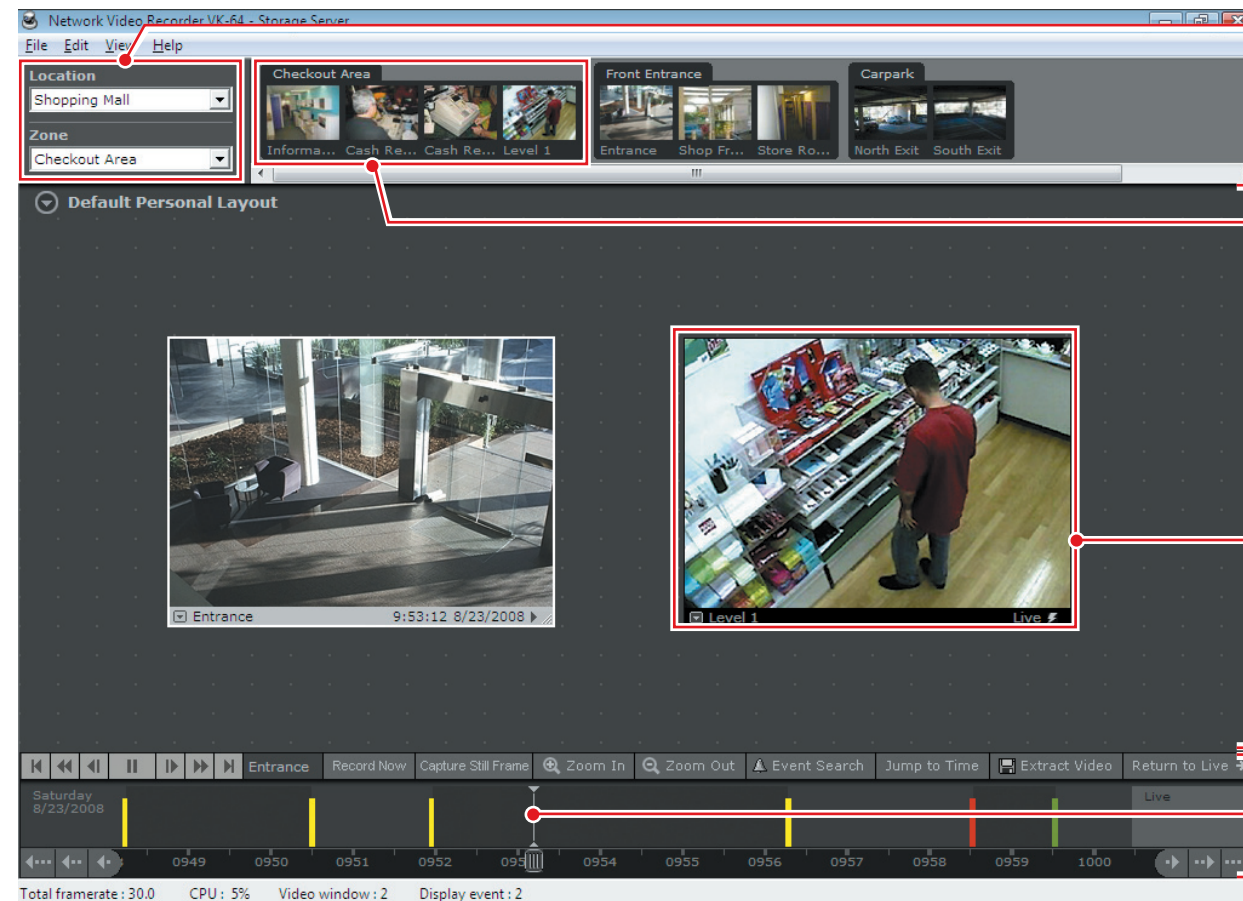


- 4 Select [File] → [Exit] in the menu bar.
VK Viewer shuts down.



- If you are using a screensaver on your PC, the screen saver may start up after VK Viewer shuts down. To restore the viewing window, simply move the mouse.

■ VK Viewing Screen



Location/Zone

[Location]	Groups of zones.
[Zone]	Areas in which cameras are located.

Camera Selection Area

Thumbnails from all the cameras located in each zone are displayed. The number of thumbnails represents the number of cameras in the zone.

Viewing Area

Video Windows are displayed here.

Video Window

Live or recorded video from a camera is displayed in this window.

Timeline

Recording information and events that have occurred are displayed.

Playhead

The time of the video currently being played is displayed.

Video Window



Video display

Live or recorded video is displayed.

Live video	The video currently being shot.
Recorded video	Video recorded on the storage server.

Title bar

The camera name and the video status are displayed.
The title bar color changes according to the displayed video content, as shown below.

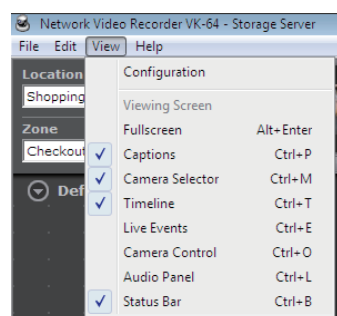
	Title bar color	Video status
During live video display	Black	Live
During recorded video display	Black	Recording time



- For information on operations such as changing the video window display position, size or layout, see Chapter 5 "Viewer Reference" in the *Administrator's Manual*.
- The camera selection area, timeline and video window title bars can all be hidden using options in the [View] menu in the menu bar.

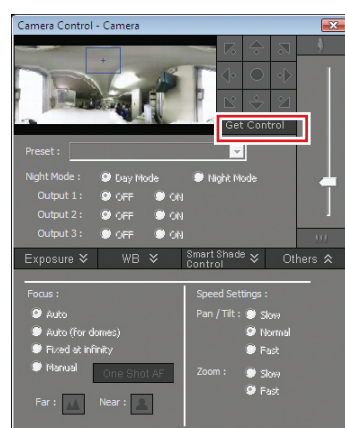
■Controlling A Camera

- 1 Click a video window for the camera you want to control.



- 2 Select [View] → [Camera Control] in the menu bar.

The [Camera Control] panel appears.



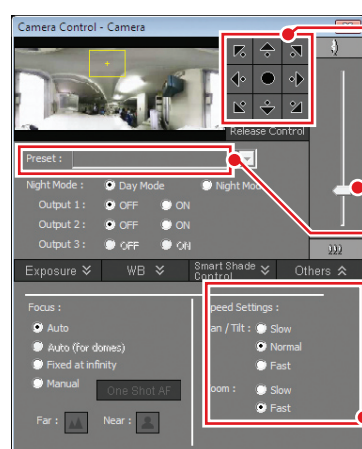
- 3 Click [Get Control] in the [Camera Control] panel.

Once you have the camera control, all the buttons in the [Camera Control] panel become active.



- If a message appears saying "Can't get camera control", system administration privileges of other Viewers of tools may be controlling the camera. Contact the administrator.

Pan/Tilt/Zoom Control



Pan (left/right) and Tilt (up/down)

These controls move the PT camera in the direction of the arrows. Pan and tilt either by briefly clicking an arrow, or by clicking and holding the arrow.

Zoom

Click and drag the zoom slider to zoom in or out.

[Preset]

Choose one of preset positions from a list.

Pan/Tilt/Zoom speed

Set the camera pan/tilt, and zoom speed.

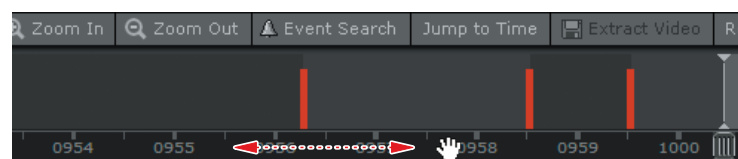


- For details, see Chapter 5 "Viewer Reference" in the *Administrator's Manual*.
- If you have the camera control and do not make any changes for 30 seconds, a message appears saying "Control will be lost in 10 seconds". You will then lose the control if it is left for another 10 seconds.
- To control a camera while it is recording, check with the administrator and review the procedure beforehand.

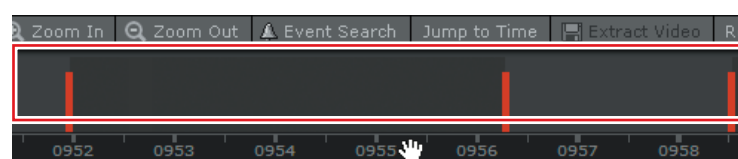
■Playing Recorded Video

Using the timeline to play video

- 1 Click a video window of the camera you want to play.
- 2 Click and drag the time bar to the left or right to change the playback time.

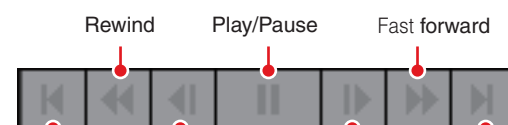


- 3 Click the time you want to play.
The recorded video appears in the selected video window.



Adjusting/Saving Played Video

Controlling playback



You can use these controls to play, pause, rewind, fast forward, nudge forward or back and jump to the previous or next event. You can also change the rewind and fast forward speeds sequentially from 1x → 2x → 5x → 10x.

Zooming in and out on the timeline



These controls change the level of detail shown in the timeline.

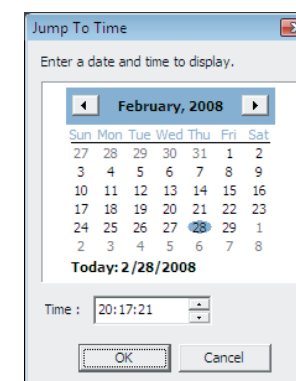
[Zoom In]	To view the timeline in more detail.
[Zoom Out]	To view the entire timeline at once.



- Rewind and nudge back cannot be used when viewing recorded MPEG-4 video. *MPEG-4 video cannot be recorded with VK-Lite.
- QuickTime version 6.5.1 or later is recommended.
- On Windows Vista, videos cannot be saved into the Program Files folder or Windows folder on the system drive.

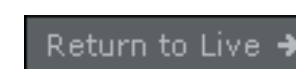
Playing video of a specified time

- 1 Click a video window of the camera you want to play.
- 2 Click [Jump to Time].
The [Jump to Time] dialog box appears.



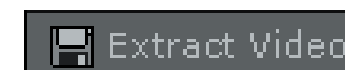
- 3 Select a date and time and click [OK].
The recorded video appears in the selected video window.

Returning to Live Video



This button switches the video display from recorded video back to live video.

Saving a specified video



You can save recorded videos to any location in .mov format. The saved videos can then be viewed in QuickTime Player or any other player that supports the .mov format.

File-Saving format	QuickTime (file extension: mov)
Recording duration	Max. 1 hour