

Canon: The Pinnacle of Imaging

Canon has decades of experience conceiving, designing and producing many of the world's finest imaging devices, and is capable of delivering the high-quality equipment needed to capture, process and reproduce even the finest and most intricate details. Canon continues to set the standard in still, video and security cameras, printers, projectors and more. Add support, both online and in person, and Canon remains an invaluable resource to the professional. In the world of professional imaging, nothing compares to Canon.



©Michele Celentano

IMAGING PRODUCTS

EOS DIGITAL SLR CAMERAS

Canon's EOS Digital SLR cameras continue to advance picture quality with proprietary Canon technology. Canon lenses, image sensors and image processors combine decades of photographic expertise with leading-edge digital technology.



EOS-1Ds Mark III

21.1 Megapixel Full-Frame CMOS Sensor, Dual DIGIC III Image Processors, shutter durability of 300,000 cycles, 3.0-inch LCD monitor with Live View.

EOS-1D Mark IV

16.1 Megapixel APS-H sized CMOS Sensor, Dual DIGIC 4 Image Processors, ISO up to 102400 (in H3 mode), 3.0-inch Clear View II monitor and 1920 x 1080 Full HD movies.



EF/EF-S Lenses

Genuine Canon optical technologies in over 60+ lenses from macro to super telephoto, Optical Image Stabilizer technology in select EF/EF-S lenses.



EOS 5D Mark II

21.1 Megapixel Full-Frame CMOS Sensor, DIGIC 4 Image Processor, Full HD video recording using EF lenses and playback on a 3.0-inch Clear View LCD.

EOS 7D

18.0 Megapixel CMOS Sensor, Dual DIGIC 4 Image Processors, Intelligent Viewfinder, Full HD video recording, with 8.0 fps continuous shooting up to 126 Large/IFPEGs with UDMA CF card.

BINOCULARS

Proprietary Canon technologies such as the vari-angle prism have enabled the development of image stabilizing binoculars that provide crisp, clear images at the highest magnifications for comfortable close-up viewing.

10x30 IS

Ultra compact, lightweight 10x Zoom with Optical Image Stabilizer, Super Spectra Multi-Coating lens and water-resistant, non-slip grip coating.



POWERSHOT DIGITAL CAMERAS

In its PowerShot digital camera line, Canon combines stylish design with the latest imaging technology, including Canon's own DIGIC Image Processor, Face Detection technology and Optical Image Stabilizer technology.



PowerShot G12

High Sensitivity System (10.0 Megapixel sensor plus Canon's DIGIC 4 Image Processor), 720p HD video with stereo sound, Hybrid IS for improved close-up shake compensation, 2.8-inch Vari-Angle LCD.

PowerShot S95

10.0 Megapixel sensor with DIGIC 4 Image Processor, 720p HD video with stereo sound, f/2.0 Wide-Angle 3.8x Lens with Optical Image Stabilizer, programmable control ring, 3.0-inch PureColor System LCD.

PROFESSIONAL PHOTO PRINTERS

With FINE core technology, Canon inkjet printers deliver both speed and high quality. All-In-One printers that conveniently copy and scan have become an essential component of at-home technology.



PIXMA Pro9500 Mark II

Professional archival inkjet photo printer, featuring LUCIA 10-color pigment ink system for professional image performance up to 13" x 19".

PIXMA Pro9000 Mark II

8-color, 4800 x 2400 dpi, borderless 13" x 19" prints. Canon's Ambient Light Correction optimizes color to output and the Chromalife100 System dye-based inks ensures longevity.

PROFESSIONAL CAMCORDERS

Canon professional camcorders deliver performance where it counts – in the field, in the studio, wherever and whenever the solution requires impressive image and creative control. Employing Canon's legendary camera and lens designs, Canon professional camcorders provide not only outstanding image quality but also the operability, flexibility, reliability and connectivity that professionals demand.



XF305 and XF300

Professional camcorders featuring three native 1920 x 1280 Canon CMOS image sensors, MPEG-2 4:2:2 50Mbps (Canon XF) codec and CF card recording for unsurpassed image quality and efficient, robust workflows. The XF305 has industry-standard HD-SDI output and genlock/SMPTE time code terminals.

LARGE-FORMAT INK-JET PRINTERS

Canon's groundbreaking technology and vast expertise in digital imaging workflow give its imagePROGRAF printer line the output quality and performance to satisfy even the most demanding professionals. From 17" to 60", Canon has the large-format printer to fit your needs.



imagePROGRAF iPF6350

12-color pigment-based ink printer for photographic and fine arts output.



XH G1S and XH A1S

High Definition three CCD handheld professional camcorder features Genuine Canon 20x HD L-Series lens with independent focus, zoom and iris rings. The XH G1S has industry-standard HD-SDI output and genlock/SMPTE time code terminals.



XF105 and XF100

Compact, lightweight professional camcorders with MPEG-2 4:2:2 50Mbps (Canon XF) codec for superb Full HD capture. Robust CF card recording, infrared recording and true stereoscopic 3-D production capabilities. The XF105 has industry-standard HD-SDI output and genlock/SMPTE time code terminals.



XA10

Ultra-compact professional camcorder records 24Mbps AVCHD video to a 64GB internal flash drive or to dual SDXC-compatible memory card slots. A Canon 10x HD Video Lens and Canon native 1920 x 1080 CMOS Image Sensor ensure superb HD video quality.

CAMCORDERS

Canon optics and proprietary imaging technologies allow its high definition and standard definition camcorders to deliver unparalleled video image quality, making them perfect for recording life's most precious memories.



VIXIA HF S30

Premium quality high definition camcorder records stunning Full HD video. Features a 32GB internal flash drive plus 2 SDXC-compatible memory card slots and a 3.5-inch High Resolution Touch Panel LCD.

SCANNERS

With exceptional color reproduction, Canon's scanners quickly produce superb scans from both photos and documents. Auto Scan Mode analyzes what is being scanned and instantly adjusts the appropriate settings for the best possible scan every time.



CanoScan 8800F

Requiring no warm-up time, this sleek scanner provides 4800 x 9600 color dpi and 281 trillion possible colors.

REALiS MULTIMEDIA LCOS PROJECTORS

Canon REALiS Multimedia Projectors utilize our proprietary AISYS-enhanced LCOS technology to deliver smooth images with high contrast, brightness and exceptional color reproduction.



REALiS SX80 Mark II Multimedia LCOS Projector

High resolution SXGA+ (1400 x 1050) projector using LCOS technology includes an HDMI input and a new Photo mode for enhanced color management and ambient light compensation.

Medical model with DICOM Simulation mode also available.

REALiS WUX4000 Multimedia LCOS Projector

Ultra-high WUXGA (1920 x 1200) resolution installation projector features 4000 lumens of brightness and interchangeable Genuine Canon lenses to deliver spectacular still and moving images.

Medical model with DICOM Simulation mode also available.

IP SECURITY CAMERAS

Canon's IP security cameras provide real-time remote monitoring for security and surveillance applications. Product line includes mini dome and PTZ cameras, domes and housings, and monitoring-recording software.



VB-C60 PTZ Network Pan Tilt Zoom Camera

Features an ultra-long 40x optical zoom with Image Stabilizer and DIGIC NET processor. Ideal for outdoor monitoring such as construction sites.

VB-C500VD Vandal Resistant Fixed Mini Dome Network Camera

Camera features a four-spring Multi-Directional Shock Absorber mechanism to minimize damage from tampering and vandalism. Ideal for shopping malls, schools, businesses and banks.



CANON SERVICE AND SUPPORT

Canon has built its reputation as an industry leader in product reliability, service and support. No matter what Canon consumer imaging product you buy, expect a top rate experience. From our cutting-edge technology to industry-leading response times for service and support, Canon U.S.A. strives for complete customer satisfaction in everything we do.

- 100% US-based support operation, with a dedicated pro support team ready to assist the unique needs of our customers.
- Canon factory-trained technicians to achieve industry-leading response time and quality of repair.*
- State-of-the-art technology and facilities to meet Canon's rigorous performance standards, including a climate and particulate controlled clean environment* and a precision lens center to accommodate the adjustment of professional lenses.
- Customized service and support offerings for professionals, including Canon Media Maintenance Service and the Canon Professional Services program.
- Environmentally responsible service operations include our Zero Landfill Product Recycling Policy.*

*For consumer imaging products only.



www.usa.canon.com/prosatisfaction
1-800-OK-CANON

All output images simulated.
Specifications subject to change without notice.

© 2011 Canon U.S.A., Inc., Canon, CANOSCAN, CXDI, DIGIC, EOS, IMAGEPROGRAF, PIXMA, POWERSHOT, REALIS, SCANFRONT, VIXIA and XL are registered trademarks of Canon Inc. in the United States and may be registered trademarks or trademarks in other countries. IMAGEANYWARE is a trademark of Canon. All other product and brand names are trademarks of their respective owners.



CANON'S STUDIO SOLUTION

Canon's Studio Solution is powerful software that combines the functions of many of the separate software applications typically used in a professional photo studio. Moreover, it integrates all of your Canon hardware, image files, customer and business data, and studio management tools into a single, easy-to-use workflow application. Studio



Solution dramatically streamlines your business and helps to maximize your income, helping you make the most of the time and expense you invest in your business. Whether you are a one-person studio running Studio Solution on a single laptop computer or a larger enterprise with multiple employees and networked workstations, the workflow is streamlined, easy-to-use and professional, reducing business-related costs while maximizing sales and profit potential. The Studio Solution interface simplifies staff training requirements, and the cohesive modules lead you naturally and effortlessly from one step to the next, enabling you to manage a highly efficient, automated, profitable business so you can focus on what is really important: your photography.

Canon
image*ANYWARE*

1-800-OK-CANON
usa.canon.com

Canon U.S.A., Inc.
One Canon Plaza
Lake Success, NY 11042

0151W997
PRINTED IN U.S.A.

CMMS

CANON MEDIA MAINTENANCE SERVICE

Canon Media Maintenance Service (CMMS) offers professional photographers at select newspapers and magazines the personalized attention that their business requires. A team of highly trained, dedicated Canon Field Support Engineers and CPS Pro Representatives provide an enhanced level of on-site maintenance and support either annually or semiannually.



Miami Herald

All camera equipment is cleaned and thoroughly examined. Minor repairs are performed on the spot, and recommendations are made for equipment in need of critical attention. Firmware is updated on all cameras, providing current equipment with the latest advancements in capability and connectivity. Serial numbers and shutter counts are cataloged for reference and photographers have the unique opportunity to discuss shooting concerns and offer their opinions about Canon products. By providing both regular, intensive maintenance and attention to specific concerns, CMMS is a great advantage and convenience for management and individual photographers alike.



CANON DIGITAL LEARNING CENTER

For in-depth information, instruction and examples of the best of Canon photography, video and printing, the Canon Digital Learning Center (CDLC) is an unmatched source of information, accessible to all and providing useful resources for advanced amateurs to professionals. On-line and free, the CDLC website features a growing collection of video tutorials, interviews, Canon product information and contests: usa.canon.com/dlc



CANON LIVE LEARNING

Canon's very own workshop and seminar series, Canon Live Learning delivers educational *experiences* for imaging enthusiasts and pros alike. This year's offerings include EOS-oriented seminars & workshops and intensive multi-day pro workshops on EOS HD video shooting techniques and production. For detailed offerings and schedules: usa.canon.com/canonlivelearning



CANON PROFESSIONAL SERVICES

Canon Professional Services (CPS) offers significant benefits for professional image makers. Members can look to the CPS program for almost any need that presents itself. CPS features Silver, Gold and Platinum levels, offering a range of benefits available only to full-time working professionals who work with Canon equipment. These benefits can include hotline phone support, expedited and discounted service and repairs, service loaners, equipment evaluation loans, access to Canon Pro Reps, equipment cleaning services, onsite support at shows and events, plus discounts on Canon Live Learning workshops and more. CPS offers a streamlined access point for unrivaled service and support that is critical for the working professional. Whether by telephone, in person, or via e-mail, CPS simply makes it faster for working professionals to get the support they need. Find out more at usa.canon.com/cps



BROADCAST & COMMUNICATIONS

STUDIO LENSES, FIELD LENS & PAN-TILT-ZOOM SYSTEM

Canon offers a diverse family of studio and field lenses, meeting a full range of imaging needs and budgets. Canon's BU-45H provides a cost-effective, high-definition robotic system for specialized applications.



HJ14ex4.3B IRSE/IASE HDTV Portable Production Lens

Very wide angle (4.3mm) zoom lens utilizes the latest advanced optical materials and coatings to produce exceptionally high contrast imagery.

XJ100 x 9.3B IE-D AF HDTV Field Lens

High and reliable focusing accuracy with rapid response, along with the ability to focus from a completely de-focused status and to focus on a fast-moving object.



XJ27 x 6.5B AF HDTV Studio Lens

High performance studio lens with capability of supplying various types of digital positional signals for virtual systems while achieving 13-bit zoom and focus repeatability.



BU-51H Pan/Tilt Camera

Versatile indoor HD system: 3CCD camera using a built-in 20x HD 4.5-90mm zoom lens with 2x digital extender, as well as Auto Focus and image-stabilizing technology.

HEALTHCARE TECHNOLOGIES

DIGITAL RADIOGRAPHY & EYECARE

Canon is an industry leader in the medical field, offering a full line of DR systems and Eyecare equipment to help healthcare professionals diagnose and treat patients in the fields of radiology, optometry and ophthalmology.

CXDI-40EG General Digital Radiography Flat-Panel Detector

The 17" x 17" imaging area accommodates any X-ray format without rotation of the detector unit and can retrofit to new or existing bucky tables.



CXDI-70C Wireless Panel Wireless Plan Panel Detector

The wireless detector offers a high level of flexibility and can be used as a king-size cassette type or with the handle-unit for even better positioning.



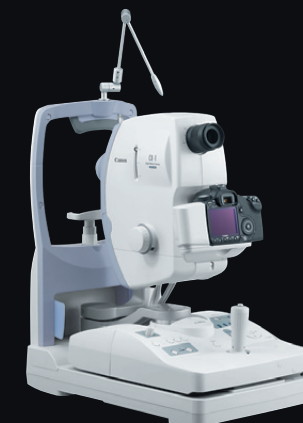
CXDI-55G Multipurpose Portable Digital Flat-Panel Detector

In addition to the thin, compact body, this device offers exceptional digital radiographic imagery, a 14" x 17" image area and a detachable cable for simple portability.



CR-2 Digital Non-Mydriatic Retinal Camera

The non-mydriatic retinal camera has a low flash intensity that minimizes miosis, and increases patient comfort leading to speedy and accurate exams.



CX-1 Hybrid Digital Mydriatic/ Non-Mydriatic Retinal Camera

The hybrid retinal camera synergizes digital mydriatic and non-mydriatic imaging capabilities, as well as multiple functions and photography modes including Fundus Autofluorescence (FAF) photography.

CR-2 Mark II and CX-1 shown with Canon EOS Digital SLR camera.

Canon

CANON PROFESSIONAL PRODUCTS GUIDE

WINTER 2011

