

The Canon Total Imaging Solution: the Professional's Choice.



These professional photographers depend on Canon for their total imaging solution from composition through final prints. Canon innovation speaks directly to their needs and desires for better tools. Canon's leadership in imaging technologies and uncompromising quality standards have delivered a wide range of tools that include the EOS System of cameras, lenses and a host of accessories. Today, the Canon system also addresses the photo printing needs of today's digital imaging professionals. Already redefining output quality and performance in fine art and commercial applications, Canon imagePROGRAF and PIXMA Pro inkjet printers are setting new standards in professional workflows. From individual vision to print, professionals now count on Canon for the finest in image capture and presentation.



“I simply love to be in control of my images from their inception to presentation.”

As a former painter, I always pay the highest attention to the detail and color quality in my work. The symbiosis of my Canon EOS Digital SLR camera and imagePROGRAF iPF9100 printer comes as close to painting as I could have ever imagined. The high quality and resolution I capture with my camera is exactly what I get on paper... and I get superb color quality with amazing consistency and speed. What would have taken me days to accomplish in the past, I can now achieve in a matter of hours.

— Ryszard Horowitz
Explorer of Light



Reliable, Efficient, Versatile

Exclusive Canon L-COA Image Processor

Canon's exclusive L-COA (Large format printer Common Architecture) image processor is the “brains” of the imagePROGRAF printer engines. Sophisticated algorithms and high-speed processing ensure rapid printing with the highest precision. Multiple tasks are processed on-board with simultaneous, parallel operation to ensure the most efficient processing of large amounts of data, ensuring the highest printing speed, highest output quality, and consistent color at all times.



Internal 80GB Hard Drive

The iPF9100, iPF8300 and iPF6350 each have a built-in 80GB hard disk drive to buffer and store print jobs. It frees up the host computer more quickly for other tasks. Multiple copies and reprints do not require the resending of data from the host computer. The printer can even perform unmanned overnight output of multiple jobs after the host computer has been shut down.

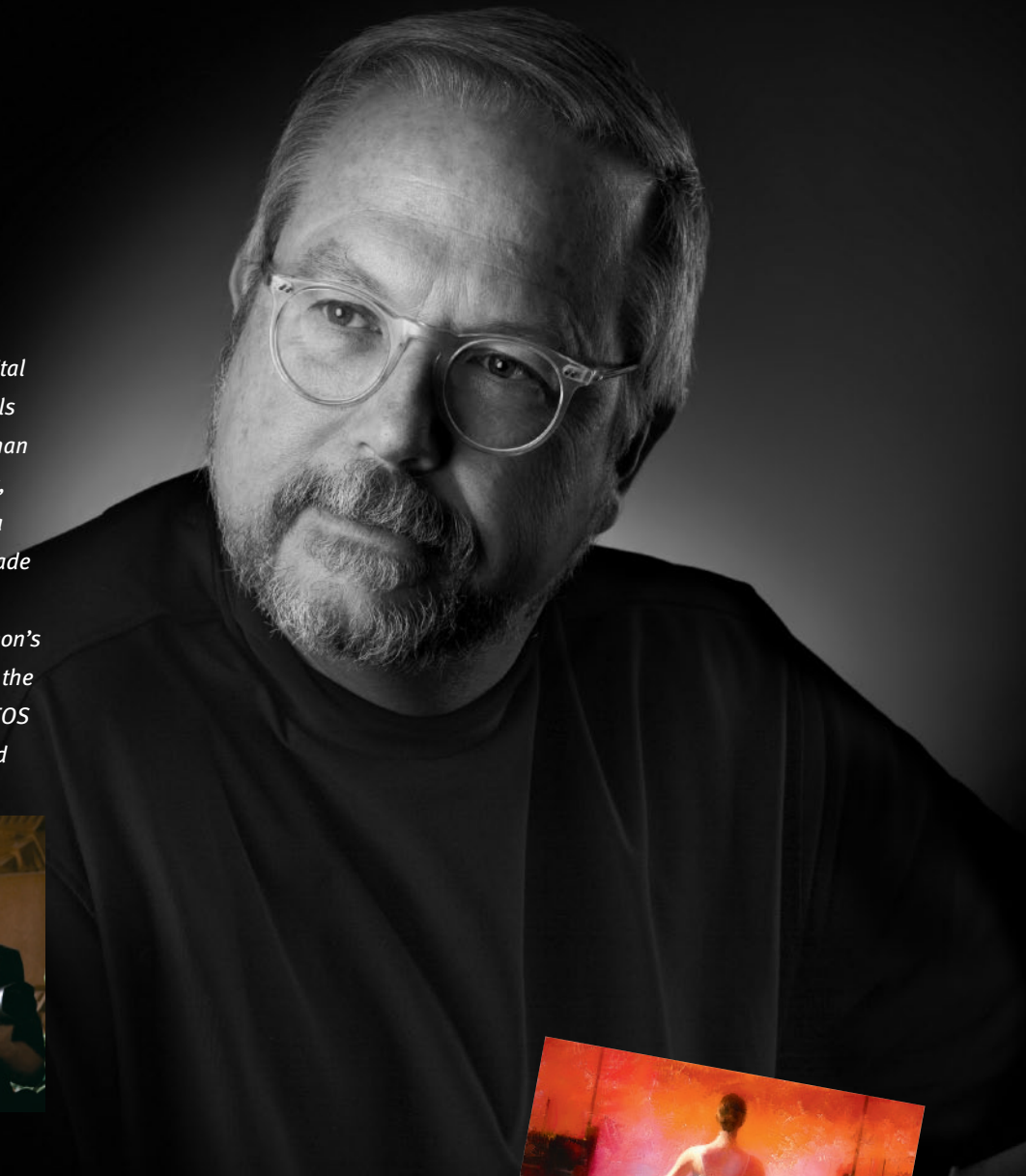




“Show big, sell big. Let your needs, not the limitation of your printer, dictate size.”

Like musicians with their instruments, digital artists must achieve ‘oneness’ with the tools we wield. For my purposes, none are finer than those offered by Canon. The iPF9100 is fast, consistent, reliable, and happily works on a seemingly limitless variety of commercial grade and fine art media. It’s capable of covering immense acreage in very short order. With Canon’s philosophy of technological synergy across the company’s entire product line, from Canon EOS Digital SLR cameras to Realis projectors and professional printers, digital artists can finally be assured that their vision will flow smoothly from inspiration to final realization.

— Bruce Dorn
Explorer of Light



Fast, High-Precision Output

FINE Dual Print Head Technology

Canon’s FINE (Full-photolithography Inkjet Nozzle Engineering) ultra-high-density print head technology uses the latest semiconductor manufacturing techniques to guarantee the highest precision and consistency. It ensures large-format output of exceptional detail and tonality while delivering higher printing speeds.

Moreover, unlike conventional inkjet printers with single print heads, the imagePROGRAF printers employ an innovative dual print head design. Each print head has 15,360 nozzles, yielding over 30,000 nozzles. This not only makes extremely high output resolution possible, but also ensures more reliable printing at even faster speeds. The iPF9100 with its 60-inch wide carriage, for example, can output a full 36" x 48" color print in approximately five minutes.



“The iPF8300 is twice as fast and has a larger, smoother color gamut than any other printer I’ve used.”

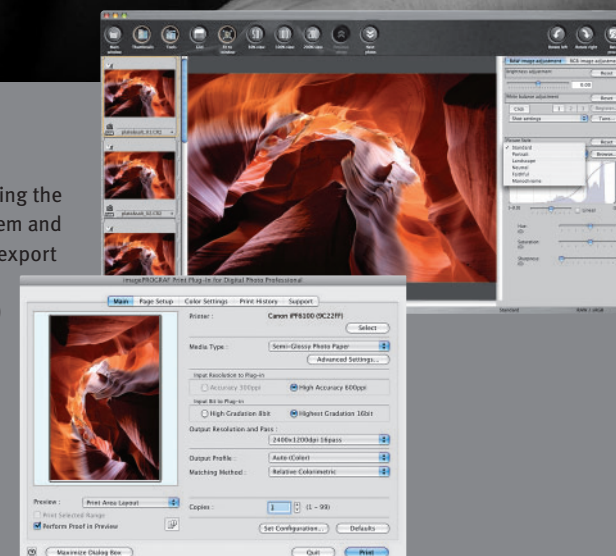
In today’s competitive market, a complete color-managed high-efficiency workflow from capture through output is a must. I shoot my Canon EOS Digital SLR camera RAW and work in 16-bit color. With the iPF8300, I can now maintain that high-bit-depth workflow without having to “dumb down” the image to 8 bits for the printer. Of course, I am still a visual person, and there are times “perfect,” profile-matched color is not what I want. The Canon export module lets me make changes, just like I used to in the dark-room, without altering my original file. And I can easily catalog all of my settings for consistency and repeatability.

— Vincent Isola
Explorer of Light



Uncompromised High-Speed Output

Canon engineers created ingenious export modules for imagePROGRAF prints, bypassing the operating system’s 8-bit restriction. The export module circumvents the operating system and is designed with a much more intuitive interface than printer drivers. Because the export module is independent from the operating system, it uses only Canon optimized algorithms resulting in higher quality prints. Canon Digital Photo Professional (DPP) software offers numerous output enhancement features, such as layout templates, Soft Proof and Real Preview. Using DPP with Canon’s export modules for imagePROGRAF printers allows direct 16-bit printing from DPP and Adobe Photoshop CS/CS2/CS3/CS4 for true wide-dynamic-range workflow options from capture to output. Due to Automatic Color Stability Control, color is truer and smoother, print after print, even pale colors or pastels. Calibration takes less than 10 minutes and is automatically applied to all supported media types and print modes.







“Not happy with printers I owned, I began building a new darkroom... only to discover Canon had made my efforts superfluous.”

I spend a great deal of time creating my images with my Canon EOS Digital SLR camera, I expect my printer to faithfully match not only my images but also my imagination. It must also work seamlessly with my other equipment. The iPF6350 is simply amazing. I get the rich tones and saturated colors I demand, print after print and with its 80GB hard drive it allows me to be even more efficient. I never have to worry about color gamut, saturation, or contrast—my prints just seem to glow. If you have a vision—one that you have spent years exploring—you want tools that complement and even enhance that vision. The iPF6350 does all that and more. The darkroom of the future has arrived, and I embrace it!

— John Pinderhughes



Unrivaled Color Consistency

Color Stability Control System

The iPF6350 and iPF6300 incorporate a Color Stability Control System that ensures consistent color throughout the printer's service life. The built-in system employs a precision multi-sensor inside the printer, calibrating in under 10 minutes and initiated from the printer's control panel. Adjustments made with any media type are saved and automatically applied to all other supported media types and modes. The imagePROGRAF iPF6350 and iPF6300 are compatible with more than 35 different types of print media—including resin coated, canvas, etc.—from 0.08 to 1.5mm thick. Calibrated Canon imagePROGRAF printers deliver amazing consistency not only among output images but also among all calibrated printers across a work environment.

Extensive RIP Support

Most major third-party RIP (Raster Image Processor) providers will support imagePROGRAF printers. These printers, therefore, enable design studios and advertising agencies to output in-house prepress proofs along with exhibition-grade photographic images.







“The iPF6350 creates richer blacks than any other inkjet printer I have ever used.”

I converted an image I shot on my Canon EOS Digital SLR camera to black-and-white using Canon's Digital Photo Professional software. What came out of the printer with incredible speed was a gorgeous, rich print with overall quality comparable to that of a traditional silver gelatin print. I am a firm believer in keeping things in the family. By that I mean Canon in, Canon out. The workflow is smooth and uncomplicated, and the results are stunning.

— John Huba



Extraordinary Black-and-White Prints

Superior Grayscale Reproduction

The imagePROGRAF printer LUCIA EX ink set uses three levels of black ink (Black, Matte Black, Gray and Photo Gray) to reproduce grayscale images. As a result, black-and-white images are reproduced with smooth, natural gradations and excellent highlight detail. These inks also assure an exceptionally high D-Max to produce crisp images with outstanding contrast.

Conventional inkjet printers must use color inks when printing black-and-white images because using black ink alone would result in grainy prints that exhibit poor tonality and reduced detail. The LUCIA EX ink set greatly reduces dependence on color inks for grayscale output, virtually eliminating metamerism and unwanted tinting.

LUCIA
ink





“The iPF6300 gives me prints of the highest photographic quality... beyond anything I have ever used before.”



I shoot a wide variety of images with my Canon EOS Digital SLR cameras. Some have brilliant, saturated colors; others have dramatic, high-contrast blacks and whites; still others have subtle, pastel colors. The iPF6300, with its spectacular wide-gamut printing capability, reproduces all of my images beautifully and effortlessly. I am in the business of selling fine-art color and B&W prints, and the iPF6300 is just what I need. I can print on a wide variety of media, including fine art paper and canvas, with breathtaking quality, consistency, and efficiency. And the iPF6300's archival LUCIA EX ink set ensures that my prints will maintain their brilliance and subtlety well into the future.

— Parish Kohanim
Explorer of Light

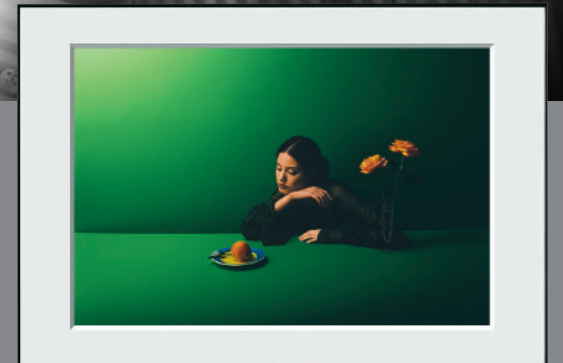


LUCIA EX Pigment Ink System

Improved Scratch Resistance

The new LUCIA EX ink provides photographers 12 all new scratch- and fade-resistant color inks. With the ability to precisely achieve their desired results by producing more expressive and crisp blacks, smooth color gradations, LUCIA EX has the capability to reproduce the finest details even in the shadowed areas of photographs.

LUCIA EX pigment inks exhibit excellent short-term color drift (“dry-down”) behavior, which is critically important for color-managed workflows and in proofing applications. Resistant to damage from atmospheric ozone, LUCIA EX inks are well suited for urban environments where prints might be displayed unframed and exposed to ambient indoor air.




LUCIA
ink





“The iPF6300 allows me to concentrate on the creative process to get the look and expression I want.”

In my work, accurate and pleasing skin tones are a necessity, not a luxury. Because my style ranges from deep shadows, vibrantly saturated colors and rich skin tones to pale high-key images, most printers fall short of reproducing the full tonal range. The Canon iPF6300 faithfully gives me the full spectrum recorded by my Canon EOS Digital SLR camera, enabling me to convey the exact mood and feel of the shot. Its fast output speed is also a decided plus. Being able to print accurate and punchy colors, deep blacks and rich skin tones in record speed for a client is a sales tool in and of itself.

— Stephen Eastwood
Explorer of Light



Precision Output with Reduced Grain

Smoother Skin Tone

The Canon LUCIA EX pigment-based ink system is regarded as the most advanced, wide-gamut ink set developed for digital printing. The LUCIA EX ink set used in the imagePROGRAF iPF6350 and iPF6300 features reformulated Black, Matte Black, Gray and Photo Gray inks. Combined with optimized ink delivery algorithms in the processor, they ensure precise dot placement and even dot patterns. And results are excellent reproductions of gradations with nearly invisible grain.


LUCIA
ink



“The essence of nature photography is to capture color, detail and form that engage and inform the viewer.”



From intimate studies of flowers to vast panoramic landscapes, the iPF5100 gives me fast, large, dramatic, vividly colored prints that show off the superb image files I capture with my Canon EOS Digital SLR camera. The superb LUCIA ink set gives me more detail in the saturated colors with greater consistency, rendering truer images than previously possible. Equally important to me is the knowledge that Canon’s professional cameras, lenses, and printers offer, throughout the process, a consistent level of quality unsurpassed in the industry. I know that my Canon equipment is able to produce the best photographic images possible today.

— George Lepp
Explorer of Light

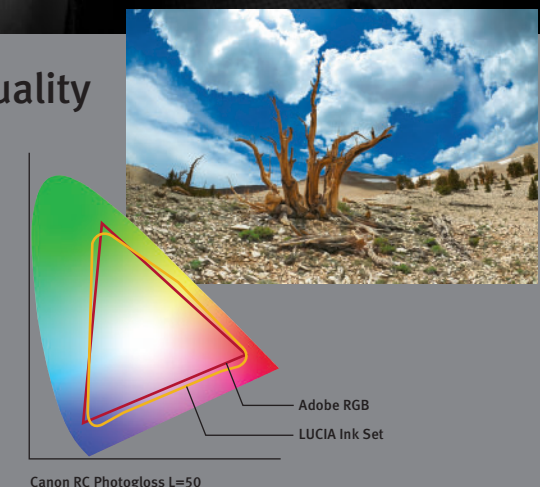


Spectacular Color, Superb Tonal Detail, Archival Quality

Canon’s LUCIA Pigment Ink Set

In addition to traditional Cyan, Magenta, Yellow, and Black inks, the Canon LUCIA set includes Photo Cyan, Photo Magenta, Red, Blue, Green, Gray, Photo Gray and Matte Black inks. The Red, Green, and Blue inks significantly improve saturation levels for the additive primary colors: Whereas typical inkjet printers are limited to a color gamut more closely associated with the smaller sRGB space, Canon imagePROGRAF printers with LUCIA inks deliver a color gamut very close to (and, in some instances, exceeding) the wider Adobe RGB space. And because the LUCIA ink set is based on pigment ink technology, prints are fade-resistant, ensuring long-lasting brilliance.


LUCIA
ink







“The iPF5100 makes the only prints I have seen that represent my exact vision.”

I push my imagery to extremes. I see the image I want to produce in my mind right before the shutter falls on my Canon EOS Digital SLR camera. Thus, I know exactly how the final image will look even before I release the shutter. Most of the time it will be at an extreme end of a spectrum. For the longest time, I searched for a digital imaging printer that could accurately reproduce or surpass the best of traditional photographic printmaking. With the Canon iPF5100, my search is over.

*Turn on the lights!
I am steppin' out
of the darkroom!*

— Parker Pfister
Explorer of Light



Extraordinary Print Quality

Improved Ink Formulations

The LUCIA ink set comprises Gray and Photo Gray inks that assure even smoother, more accurate gradations from gray to dark gray to black. The LUCIA inks are renowned for their ability to reproduce tonal detail, significantly reducing graininess and bronzing.

Reduced Bronzing

Depending on media type and image content, an inkjet print may exhibit bronzing accompanied by an iridescent surface luster. While bronzing is noticeable only at acute viewing angles, reducing the effect produces unmistakable improvement in print quality. Canon has successfully reduced bronzing in the LUCIA ink system with a proprietary binding polymer technology. Printed images are more vibrant and better reveal subtle detail.


LUCIA
ink



With Gray Ink

Conventional Ink System



“I can now focus on what I do best and leave the printing to the experts at Canon.”

Running a busy studio with 25 employees does not leave me much time to worry about handling the technical side of a printer. Color management and file preparation can be difficult skills to master, but Canon has managed to make the entire workflow clear-cut and almost effortless. The iPF5100, in particular, has been the perfect solution for my studio. This user-friendly printer has opened new doors for us, enabling us to generate more creative products that our clients just love to purchase. And I can depend on the iPF5100 for the same clean, consistently superb image quality I have come to expect from my Canon EOS Digital SLR cameras, and prints delivered to our clients in a timely manner.

*—Sandy Puc’
Explorer of Light*



Superb Reproduction of Image Detail

Precision Ink Delivery System

The LUCIA pigment-based ink set used in the Canon imagePROGRAF iPF5100 features reformulated Black inks and re-optimized ink delivery algorithms. Grain is less visible and image detail is rendered with extraordinary precision across the entire tonal range.

The Unparalleled Canon-to-Canon Workflow

Designed to integrate effortlessly into professional workflows, the Canon total imaging solution includes powerful software tools that enhance creativity and productivity. The sophisticated imagePROGRAF print drivers fully support ICC-profile-based color management under both Windows and Macintosh operating systems. Shoot with Canon EOS Digital SLR cameras and take full advantage of the wider Adobe RGB color space from capture to print. Use the advanced export module for direct printing of 16-bit images to implement a true wide-dynamic-range workflow option. The possibilities are virtually limitless.



“I depend on the PIXMA Pro9500 Mark II to reproduce every nuance and convey the mood and emotion of my images.”

The images I produce with my Canon EOS Digital SLR camera are monochromatic and subtle, and that makes them a challenge for any reproduction process. I had been disappointed by inkjet printers and relied almost exclusively on traditional photographic printing. I wondered whether the promise of the ‘digital darkroom’ would ever come true for me. The Canon PIXMA Pro9500 Mark II was the answer I had been waiting for. With its unique LUCIA ink set, the Pro9500 Mark II reproduces tonal gradations I thought I’d never see in inkjet prints. The prints I make with the Pro9500 Mark II are truly ‘gallery grade’—not only because of their image quality but also because they won’t fade with time.

— Robert Farber
Explorer of Light



Superior Grayscale Reproduction

Fine Tonal Gradations

The PIXMA Pro9500 Mark II features a 10-color pigment ink system based on the LUCIA set developed for the Canon imagePROGRAF professional printers. In addition to Cyan, Magenta, Yellow and Photo Black inks, the PIXMA Pro9500 Mark II ink set includes Photo Cyan, Photo Magenta, Red, Green, Matte Black, and Gray. The availability of Gray ink in addition to Black (whether Photo Black or Matte Black) results in superior grayscale reproduction. Black-and-white images are smooth, with natural gradations, excellent tonal detail and reduced graininess.

Perfect for Fine Art Prints

With versatile dual paper paths, the PIXMA Pro9500 Mark II printer supports a wide range of output media, including specialty and fine art papers such as RC photo. Matte Black ink produces deep blacks with matte media; Photo Black ink is optimized for high-gloss surfaces. Photo and Matte Black inks are loaded at all times, and automatic switching between them saves time, ink and eliminates guesswork.



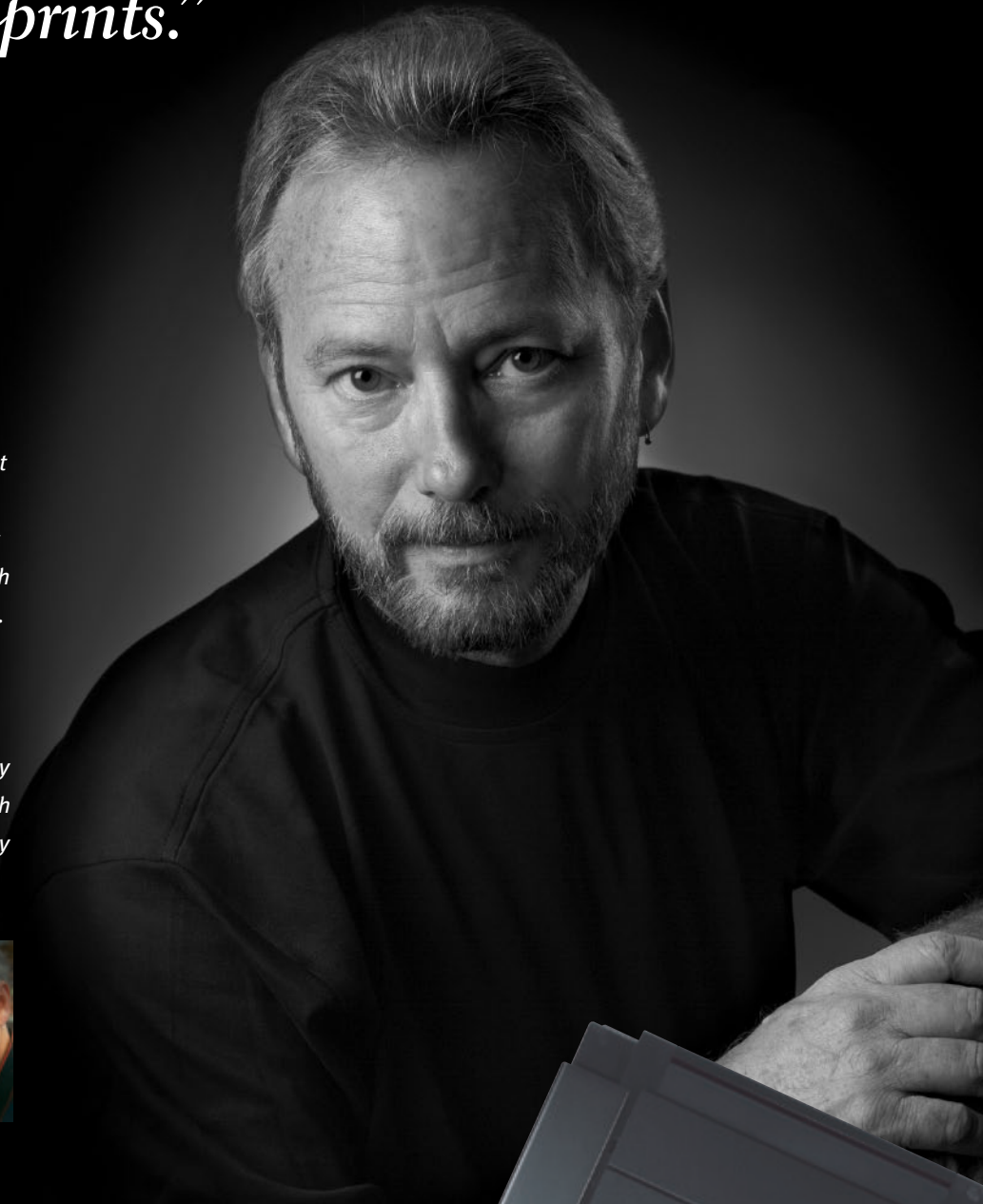




“The Pro9500 Mark II delivers the extraordinary color vibrancy and longevity I demand of my prints.”

Getting the color right the first time is the most important benefit for my workflow. The PIXMA Pro9500 Mark II, while being easy to use, gives me an exceptional degree of color control, which is a big plus for my kind of specialized imaging. Print quality and longevity are also critical in today's workflow. The Pro9500 Mark II's pigment-based LUCIA inks assure excellent archival characteristics and perform exceedingly well with a wide variety of media types. Along with the ability to reproduce the superb image quality I get with my Canon EOS Digital SLR camera, I'm impressed by the speed of printing, which helps boost productivity.

—Eddie Tapp
Explorer of Light



Superior Print Longevity

Excellent Archival Characteristics

Canon LUCIA pigment ink technology ensures long-lasting prints that are highly resistant to fading. The Pro9500 Mark II pigment ink set also exhibits excellent color stability with virtually no short- or long-term color drift—an important consideration in color-managed workflows.

Wider Color Gamut

The Pro9500 Mark II pigment-based 10-ink system includes dedicated Red and Green inks, which enables the reproduction of a much wider range of colors with superior tonal gradation. In particular, when compared to conventional inkjet printers limited to CMY inks, color reproduction is much improved in the yellow-to-orange, red, and green color ranges. Thus, whereas typical inkjet printers are limited to color gamuts more closely associated with the sRGB space, the Pro9500 Mark II enables photographers to work in the wider Adobe RGB space. As the Pro9500 Mark II software fully supports ICC-profile-based color-managed workflows, photographers get exceptional consistency and color accuracy in their prints.


LUCIA
ink



 **PIXMA** Pro 9000 Mark II
Photo Printer

“Here, finally, is a printer that fits my demanding workflow without compromising image quality.”

The speed and reliability of my Canon PIXMA Pro9000 Mark II allow me to print dozens of images for portfolios in hours instead of days, which means I can print custom books for clients on demand. That's incredibly valuable to my business. Print quality is exceptional. Even though the photographs I shoot with my Canon EOS Digital SLR camera have a high degree of saturation and contrast, I depend on details in the highlights and shadows to make my images stand out. Most printers fail when it comes to reproducing the extremes and the details, but not the Pro9000 Mark II. A fast, efficient printer that delivers the wide gamut and tonal precision I need to convey the punch and subtlety of my photographs... I can't ask for more.

— Vincent Laforet
Explorer of Light



Engineered for Efficiency and Dependability

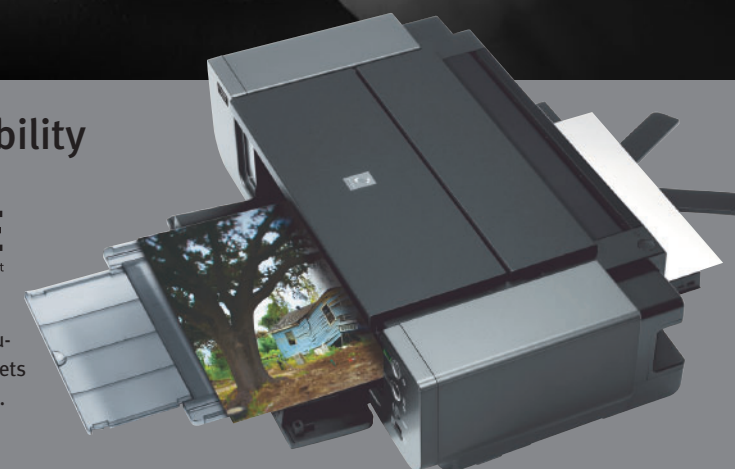
FINE Print Head Technology

The PIXMA Pro9000 Mark II features Canon's exclusive FINE (Full-photolithography Inkjet Nozzle Engineering) print head technology, which delivers high-resolution at high output speeds. This high-density, high-precision print head releases highly uniform microfine droplets as small as 2 picoliters, delivering a maximum resolution of 4800 x 2400 dpi. The ability to accurately deposit thousands of ink droplets each second is unrivaled and results in prints with sharper detail and less grain.



Versatile Dual Paper Paths

Dual paper paths accommodate a wide range of media types. In addition to the standard top-loading feeder, the PIXMA Pro9000 Mark II has a manual front-loading feeder that provides a straight paper path. This enables the use of large, non-standard paper sizes as well as thicker fine art and specialty media (up to 1.2mm).





“My camera and printer must help me achieve the WOW factor: Wonderful, Original Work. Thanks, Canon.”

My job is to make fresh, exciting images. The research and technology behind the Canon name may be invisible to those viewing my work, but I rely on them every day to realize my vision. We expect a lot from today's technology. Most equipment delivers 90% satisfaction, but I seek perfection. So I choose my tools carefully. The technology must fit my workflow and be totally reliable. And as my work is about color, my choices must make the big difference — brilliant colors, super sharpness, and detail that make my images jump off the page. The PIXMA Pro9000 Mark II makes it happen for me.

— Michel Tcherevkoff
Explorer of Light



Designed for Imaging Professionals

8-Color Dye-Based Wide Gamut Ink Set

Canon's advanced 8-color dye-based ink system features Red and Green inks in addition to Cyan, Magenta, Yellow, Photo Cyan, Photo Magenta and Photo Black. This unconventional ink set reproduces a much wider color gamut than any previous dye-based inkjet printer, delivering a color space that rivals positive film. In particular, red-region saturation is increased by approximately 60 percent, and green-region saturation is increased by approximately 30 percent. Moreover, the dye-based ink set delivers the vividly brilliant colors and high-gloss/high-luster finish desired by many photographers.

Superior Print Longevity

ChromaLife100 technology assures long-lasting prints that are highly resistant to fading. Photos printed on the PIXMA Pro9000 Mark II will resist fading for up to 100 years when kept in archival quality photo albums. When combined with select genuine Canon photo papers, prints typically exhibit 30-year light fastness and 10-year gas fastness.

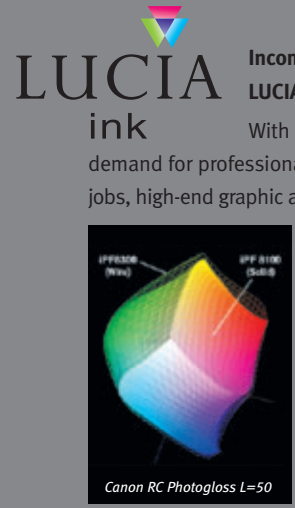




©2007 Pafish Kohanim All Rights Reserved.

Brilliant Large-Format Printing Solutions

The imagePROGRAF printers are pure expressions of Canon ingenuity. Combining groundbreaking technologies with unparalleled Canon expertise in the digital imaging workflow, these innovative large-format printers are the new benchmarks for output quality and performance.



Incomparable 12-Color LUCIA EX Ink Set
With increasing consumer demand for professional and high quality print jobs, high-end graphic and photographic studios continue to seek the capability to accurately produce vivid output of consumers' most demanding projects. The all-new 12-Color LUCIA EX pigment ink set from Canon, incorporated into the

44-inch imagePROGRAF iPF8300, 24-inch imagePROGRAF iPF6350 and the iPF6300 printers, increases the achievable color gamut by approximately 20 percent and enabling over 90 percent coverage of PANTONE® colors to produce rich expression. The introduction of the new LUCIA EX ink set provides photographers with the ability to precisely achieve their desired results by producing more expressive and crisp blacks, smooth color gradations, and the capability to faithfully reproduce the finest details in the shadowed areas of photographs. Even very delicate shading is reproduced

smoothly to give images exquisite depth. The new pigment inks are also designed with an innovative polymer structure that results in greater scratch resistance and protection from color fading, while also reducing bronzing and metamerism, ensuring durable, stable output. Additionally, LUCIA EX pigment inks exhibit excellent short-term color drift ("dry-down") behavior, which is critically important for color-managed workflows and in proofing applications. The new LUCIA EX inks are also resistant to damage from atmospheric ozone, a particular concern in urban environments in situations where

prints might be displayed unframed and exposed to ambient indoor air.

Automatic Color Stability Control System
A sophisticated Automatic Color Stability Control system on imagePROGRAF printers makes it simple to achieve predictable, repeatable color. With a high-performance multi-sensor installed in the printer, calibration is done easily and quickly (under 10 minutes) with a simple setup from the printer's operation panel. Photographers will find amazing consistency among all calibrated printers they might use. Canon imagePROGRAF color calibration also ensures consistency in viewed colors from capture to calibrated computer screen to final print.

Superior Print Durability
Using advanced pigment ink technology, the Canon LUCIA ink set delivers outstanding archival characteristics. Prints are exceptionally fade-resistant and exhibit excellent color stability, light-fastness, gas-fastness, and water resistance.

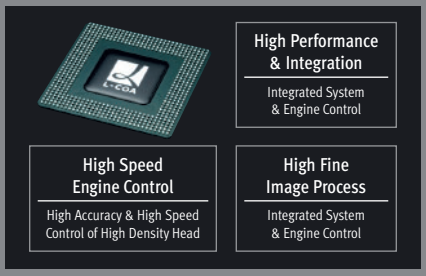
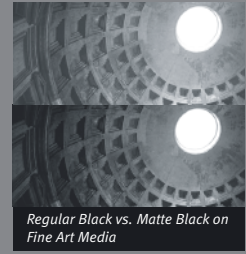
FINE Dual Print Head Technology
Thanks to unique Canon FINE print head technology, photographers no longer need to choose between print speed and image quality. imagePROGRAF printers employ an advanced FINE dual print head design—each head has 15,360 nozzles, yielding over 30,000 nozzles. This not only delivers extremely high output resolution, but also ensures faster, more reliable printing. The large number of nozzles also substantially increases print head life so that the printer requires less frequent maintenance. And because the print heads are user-replaceable, maintenance can be performed with minimal downtime and no costly service calls.

Automatic Black Ink Selection
The LUCIA ink set includes both Black and Matte Black. Black ink is optimized for glossy-

surface media, while Matte Black ink improves contrast with Fine Art papers. imagePROGRAF printers keep both black ink cartridges loaded on separate printing channels at all times and automatically selects one or the other depending on media type. This superior design eliminates wasted ink and saves time.

Unsurpassed Output Media Selection
imagePROGRAF printers include support for a wide range of paper and specialty output media, such as RC photo, fine art and co-branded papers. Versatile 4-way media feeding, including a roll feed, enables the printer to handle media thicknesses from 0.07mm to 1.5mm (iPF6350, iPF6300 and iPF5100). Moreover, the Media Configuration Tool supplied with the printer enables the user to update both the driver and the printer itself, using a periodically published database, to accommodate new media as they become available. Custom ICC output profiles for individual media will also be available via download, making the imagePROGRAF printers ideal for color-managed workflows. (Profiles for the iPF9100, iPF8300, iPF6350, iPF6300 and iPF5100 are available online now.)

Exclusive L-COA Image Processor
Canon L-COA (Large format printer Common Architecture) technology lies at the heart of the dedicated image processor in imagePROGRAF printers. A proprietary chip architecture, sophisticated algorithms and high-speed multitasking capability ensure rapid printing with precise control over the 12-color ink delivery system. In addition to assuring both the highest printing speed and highest output quality at all times, the L-COA



processor enables productivity-enhancing features such as auto nozzle clog detection, cleaning, and compensation.

16-Bit Printing Support
While conventional inkjet printers are designed to handle only 8-bit-per-channel image data, the imagePROGRAF printers provide advanced support for high-bit-depth files. A supplied plug-in enables high-bit-depth images to be printed directly from Digital Photo Professional ver.3.1 and later. Also included is an export module for printing 16-bit files directly from Adobe® Photoshop®. These features provide the photographer with high-bit-depth workflow options from capture to output. Images are reproduced with smoother tonal gradations for greater photorealism. Dynamic-range-related problems, such as posterization and banding, are significantly reduced. You can now realize that high depth color you captured with your digital camera in your wide format without additional software.

Advanced Connectivity
The imagePROGRAF printers are equipped with USB 2.0 Hi-Speed and Ethernet interfaces. A FireWire (IEEE 1394) interface is also available as an option. They also feature excellent multi-platform support, enabling seamless integration with a wide variety of hardware and workflow configurations.





©2007 Stephen Eastwood. All Rights Reserved.



Fast, Spectacular, Affordable Desktop Photo Printing

A professional-quality printer capable of gallery-grade output up to 13 x 19 inches on a wide variety of media, the affordable Canon PIXMA Pro series printers have no peer when it comes to image quality, speed and value.

LUCIA
ink

**10-color pigment
ink System
(Pro9500 Mark II)**

Featuring the same LUCIA pigment ink found in the imagePROGRAF series printers, the PIXMA Pro9500 Mark II's 10-pigment ink set produces professional-quality, archival prints. The Gray, Photo Black and Matte Black ink



produce monochrome photographs of unrivaled quality on fine art and glossy photo paper. Gray ink reduces grain, banding and metamerism and virtually eliminates color shifts. Unlike black ink that increases contrast, matte black ink increases black density on fine art paper while maintaining detail in shadows. With 10 individual ink tanks, users can replace a single color, reducing waste and saving money. The Pro9500 Mark II's ink is less sensitive to light and environmental factors. Therefore, prints have incredibly smoother gradations and are of archival quality.

ChromaLife100

**Ink System
(Pro9000 Mark II)**

The PIXMA Pro9000 Mark II features Canon's highly refined dye-based ChromaLife100 ink system. This advanced 8-color system reproduces a much wider color gamut than conventional inkjet printers,

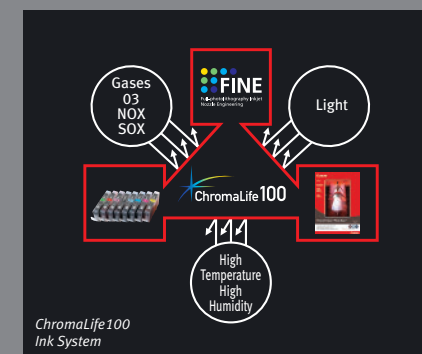


PIXMA Pro 9500 Mark II / Pro 9000 Mark II
Photo Printer

delivering a color range that rivals positive film. The dye-based ink set further ensures vividly brilliant colors and a high-luster surface finish that enhances the beauty of printed images.

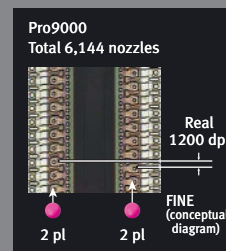
Long-Lasting Photos

Canon's ChromaLife100 ink technology also delivers prints that withstand the test of time. Photos printed on the PIXMA Pro9000 Mark II will resist fading for up to 100 years when kept in albums. When combined with genuine Canon photo media, prints typically exhibit 30-year light-fastness and 10-year gas-fastness.



FINE Print Head Technology

Canon FINE (Full-photolithography Inkjet Nozzle Engineering) print head technology is unsurpassed in precision and performance. The PIXMA Pro9000 Mark II print head has 6,144 nozzles capable of releasing extremely uniform microfine ink droplets as small as 2 picoliters, while the PIXMA Pro9500 Mark II print head has 7,680 nozzles with droplets as small as 3 picoliters. The high-density nozzle design produces sharper image detail with less grain. Fast printing speeds are achieved without compromising output resolution—a maximum of 4800 x 2400 dpi.



Versatile, Convenient Paper Handling

The PIXMA Pro series printers dual paper paths: standard top-loading and manual front-loading. This advanced design accommodates a wide range of media types. The manual front feeder provides a straight paper path, enabling the use of large, non-standard paper sizes as well as thicker fine art and specialty media (up to 1.2mm).

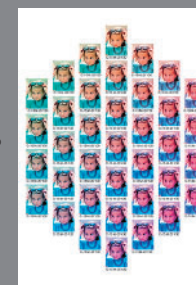
Easy-PhotoPrint Pro Software

Canon's exclusive Easy-PhotoPrint Pro (EPP Pro) for Windows® and Macintosh® is a plug-in that can be launched from either Digital Photo Professional or Adobe Photoshop CS, CS2, CS3 or CS4. It is a professional productivity tool that enables precise control over photographic printing with the PIXMA Pro series printers, enhancing the workflows typically used by imaging professionals and advanced enthusiasts. Linked with Digital Photo Professional, for example, photographers shooting with Canon EOS Digital SLR cameras can batch-process as many as 1,000 RAW images with a single mouse click.

EPP Pro includes numerous features designed to make life easier for the hard-working professional. Pattern Print, for example, prints multiple thumbnails of a single image, simulating a range of output settings on a single sheet of paper for easy comparison. Contact Print quickly creates customized index prints. Photographers can also choose to include select EXIF information on their prints. EPP Pro also provides superior control over color output, including advanced color management using ICC profiles and sophisticated printing support. All settings can be saved for easy recall.

Advanced Camera Direct Printing

Photographers who shoot with Canon EOS Digital SLR cameras can take advantage of extraordinary capabilities when printing directly to the PIXMA Pro Printers (via PictBridge). For example, direct support for Canon Picture Style technology enables advanced print output control, either faithfully preserving original intent or dialing-in specific image enhancements. Special output options, including useful layouts, can be selected on the camera—no need for a computer.



Pattern Print



Use Advanced Camera Direct Capabilities to quickly make prints with EXIF data and contact sheets.



©Vincent Laforet



©Eddie Tapp



©2007 Parish Kohanim All Rights Reserved.

Canon-to-Canon Quality Starts with the EOS System

While Canon photo printers individually set the highest standards of performance in their respective categories, they are, in fact, key elements of the Canon Total Workflow System. To ensure the highest quality print from your Canon EOS Digital SLR camera, be sure to print on a Canon Professional Printer and use genuine Canon media and ink.



Viewfinder image simulated to show activated assist points in Custom Function.

EOS SLR Technology

Throughout the history of autofocus SLR photography, one name has remained synonymous with innovation: Canon EOS. Today, as digital imaging technologies take

center stage, Canon EOS continues to lead the way with a comprehensive range of both digital and film SLR cameras, more than 60 EF lenses, numerous Speedlite flashes, and an unsurpassed array of system accessories.

Canon CMOS Sensors

Proprietary Canon CMOS sensors convert and amplify signals at each photodiode before they are transferred to the image processor. Compared to CCD sensors, the Canon CMOS sensor can read out more data simultaneously at high speed using multiple channels, which dramatically improves camera responsiveness. Moreover, power consumption is reduced by

up to 90% compared to CCD sensors because CMOS sensors eliminate the need to transfer electrical charge. Unique to Canon CMOS sensors is a novel on-chip noise reduction system that ensures exceptionally clean, noise-free images. Canon semiconductor



Canon Exclusive Full-frame CMOS sensor



engineers have also successfully increased the fill factor to capture images with rich, beautiful color. CMOS sensors are also easily fabricated to full-frame 35mm dimensions, an important consideration for photographers who wish to make the best use of existing EF lens arsenals. The latest Canon CMOS Sensors are also designed to support the Live View Function, implemented in Canon EOS Digital SLR cameras to enable mirror-up image composition on the camera's LCD or a remote monitor.

Autofocus Technology

Canon EOS Digital SLR cameras have consistently featured leading-edge AF technologies. Today, the top Canon EOS Digital SLR cameras use an extraordinary 45-Point High-Density Area AF system that provides not only the industry's largest AF coverage area, but also the greatest range of control over focusing point selection. Canon EOS autofocus is fast, reliable, and versatile.

Unparalleled Exposure Control

Canon EOS Digital SLR cameras incorporate advanced exposure control systems, offering the photographer precise AE with the widest range of metering options. Full-frame Evaluative metering uses sensors with numerous zones in conjunction with focusing point data. Photographers can also choose Center-Weighted, Partial, or Spot metering.

Exclusive DIGIC Image Processor

Developed to maximize performance between the capture and recording stages of digital photography, the Canon DIGIC Image Processor employs proprietary signal-processing algorithms to dramatically enhance image quality and deliver natural renditions of bright, high-saturation subjects, and ensure more precise auto white balance. Top Canon EOS Digital SLR camera models use either DIGIC 4 or DIGIC III Image Processors to provide even greater data-processing capability, handling the



huge amount of data from the newest super-high-resolution CMOS sensors with tremendous speed. Moreover, card write speeds are faster, noise control is significantly expanded, and camera responsiveness has been further improved.

Wireless File Transmitter

The compact, versatile Wireless File Transmitter integrates with select Canon EOS Digital SLR cameras and provides the same degree of durability and weather resistance as the camera bodies. Wireless LAN system setup is simple with either Windows or Mac OS X operating systems, and more efficient built-in antenna enables wireless communication with host computers up to 492 ft. (150m)* away.

* With a large, high-performance antenna attached to the wireless LAN access point. With a large, high-performance external antenna connected to a wireless LAN access point receiver. Wireless distance range is dependent upon environmental conditions and other radio interference.

Canon EF Lenses

In many ways, an SLR is defined by the quality, breadth and scope of its associated system of lenses. From ultra-wide primes and zooms to the signature white telephoto lenses and numerous special purpose lenses such as fisheye, macro and TS-E (tilt-shift) lenses, the EF Lens family meets the needs of photographers of any stripe.

L-Series Lenses

Canon L-Series lenses are distinguished by a bold red ring around the outer barrel and valued for their sophisticated Canon technologies, edge-to-edge sharpness and accurate color. Select L-Series lenses are also sealed against dust and moisture, giving photographers the confidence to shoot in any condition.

Ultrasonic Motor

Canon USM (Ultrasonic Motor) lenses employ the minute vibrations created by piezoelectric ceramic elements for fast and silent focusing. USM lenses



also draw minimal power from the camera, ensuring longer battery life.

Optical Image Stabilizer

Canon Optical Image Stabilizer technology uses miniature gyro sensors and a high-speed microcomputer built into the lens that applies correction via a special stabilizing lens group. The Optical Image Stabilizer System in Canon lenses is optimized for each lenses' focal length and characteristics, thus providing up to 4 stops of shake correction. The benefits of Canon's in-lens system are a steadier viewfinder image, improved autofocus, and steadier images.



Speedlite Technology

Canon Speedlites are the ideal flash source for Canon EOS Digital SLR cameras. They are technologically advanced to provide perfect exposure and illumination with just about any subject, yet operation is remarkably simple. The E-TTL II (Evaluative Through-The-Lens) flash exposure control mode, for example, incorporates distance information from compatible EF lenses to eliminate underexposure that can occur with highly reflective subjects or backgrounds.

Comprehensive System Accessories

The EOS System offers accessories designed to maximize capabilities and enhance the shooting experience. Photographers can choose from battery packs, remote controllers, and a wireless file transmitter, just to name a few examples.



SPECIFICATIONS

	imagePROGRAF iPF9100	imagePROGRAF iPF8300	imagePROGRAF iPF6350	imagePROGRAF iPF6300	imagePROGRAF iPF5100	PIXMA Pro9500 Mark II	PIXMA Pro9000 Mark II
Ink Compatibility	All pigment/12 colors (MBk/Bk/C/PC/M/PM/Y/R/G/B/GY/PGY)	All pigment/12 colors (MBk/Bk/C/PC/M/PM/Y/R/G/B/GY/PGY)	All pigment/12 colors (MBk/Bk/C/PC/M/PM/Y/R/G/B/GY/PGY)	All pigment/12 colors (MBk/Bk/C/PC/M/PM/Y/R/G/B/GY/PGY)	All pigment/12 colors (MBk/Bk/C/PC/M/PM/Y/R/G/B/GY/PGY)	All pigment/10 colors (PM/GY/MBk/PBk/PC/C/Y/M/G/R)	All dye-based/8 colors (G/R/PM/Bk/PC/C/Y/M)
Ink Capacity	700ml, 330ml per color	700ml, 330ml per color	Bundled starter ink: 90ml, Replacement ink : 130 ml per color	Bundled starter ink: 90ml, Replacement ink : 130 ml per color	Bundled starter ink: 90ml, Replacement ink : 130 ml per color	14ml per color	13ml per color
Print Head	6 chips x 2 FINE print heads	6 chips x 2 FINE print heads	6 chips x 2 FINE print heads	6 chips x 2 FINE print heads	6 chips x 2 FINE print heads	1 FINE print head	1 FINE print head
Ink Droplet Size	4pl	4pl	4pl	4pl	4pl	3pl	2pl
Number of Nozzles	2,560 nozzles per chip, 30,720 nozzles total	2,560 nozzles per chip, 30,720 nozzles total	2,560 nozzles per chip, 30,720 nozzles total	2,560 nozzles per chip, 30,720 nozzles total	2,560 nozzles per chip, 30,720 nozzles total	7,680 nozzles total	6,144 nozzles total
Print Speed` (max.)	36" x 48" Glossy Photo Paper in Standard Mode: approx. 5 min. L-COA controller to operate at fast print speeds and accurately lay ink	40" x 50" Photo Glossy Paper HG170 in Standard Mode: approx. 9.2 min. L-COA controller to operate at fast print speeds and accurately lay ink	23.39" x 33.11" (A1) Glossy Photo Paper in Standard Mode: approx. 4.1 min.	23.39" x 33.11" (A1) Glossy Photo Paper in Standard Mode: approx. 4.1 min.	16.54" x 23.39": approx. 2 min. 18 sec.	11" x 14" high: approx. 7 min. 55 sec 8" x 10" borderless photo: approx. 4 min. 4" x 6" borderless photo: approx. 2 min. 5 sec.	11" x 14" photo w/ border: approx. 1 min. 23 sec. 8" x 10" photo: approx. 50 sec. 4" x 6" photo: approx. 25 sec.
Print Resolution (max.)	2,400 x 1,200 dpi	2,400 x 1,200 dpi	2,400 x 1,200 dpi	2,400 x 1,200 dpi	2,400 x 1,200 dpi	4,800 x 2,400 dpi	4,800 x 2,400 dpi
Interface	USB 2.0 Hi-Speed/Ethernet (built-in)/ IEEE1394 (optional w/expansion card)	USB 2.0 Hi-Speed/Ethernet (built-in)/	USB 2.0 Hi-Speed/Ethernet (built-in)/	USB 2.0 Hi-Speed/Ethernet (built-in)/	USB 2.0 Hi-Speed/Ethernet (built-in)/ IEEE1394 (optional w/expansion card)	USB 2.0 Hi-Speed, Direct Print Port (PictBridge)	USB 2.0 Hi-Speed, Direct Print Port (PictBridge)
Included Software	imagePROGRAF Printer Driver, Printer Driver Extra Kit: Free Layout, imageRUNNER Linking Function, imagePROGRAF Status Monitor, Media Configuration Tool, Print Plug-in for Photoshop, Print Plug-in for Digital Photo Professional, Digital Photo Front-Access	imagePROGRAF Printer Driver, Printer Driver Extra Kit: Free Layout, imageRUNNER Linking Function, imagePROGRAF Status Monitor, Accounting Tool, Media Configuration Tool, Print Plug-in for Photoshop, Print Plug-in for Digital Photo Professional, Print Plug-in for Microsoft Office, Digital Photo Front-Access	imagePROGRAF Printer Driver, Printer Driver Extra Kit: Free Layout, imageRUNNER Linking Function, imagePROGRAF Status Monitor, Accounting Tool, Media Configuration Tool, Print Plug-in for Photoshop, Print Plug-in for Digital Photo Professional, Print Plug-in for Microsoft Office, Digital Photo Front-Access	imagePROGRAF Printer Driver, Printer Driver Extra Kit: Free Layout, imageRUNNER Linking Function, imagePROGRAF Status Monitor, Accounting Tool, Media Configuration Tool, Print Plug-in for Photoshop, Print Plug-in for Digital Photo Professional, Print Plug-in for Microsoft Office, Digital Photo Front-Access	imagePROGRAF Printer Driver, Printer Driver Extra Kit: Free Layout, imageRUNNER Linking Function, imagePROGRAF Status Monitor, Media Configuration Tool, Print Plug-in for Photoshop, Print Plug-in for Digital Photo Professional, Digital Photo Front-Access	Setup Software & User's Guide CD-ROM, PIXMA Pro9500 Mark II Printer Driver, Adobe PhotoShop Elements 6, Easy-Photo Print EX, Easy-Photo Print Pro	Setup Software & User's Guide CD-ROM, PIXMA Pro9000 Mark II Printer Driver, Adobe PhotoShop Elements 6, Easy-Photo Print EX, Easy-Photo Print Pro
OS Compatibility	Windows: 2000/XP/Vista Mac: OS v9.1 or later, OS X v10.2 or later	Windows: 2000/XP/Vista/7 Mac: OS X v10.3.9 or later	Windows: 2000/XP/Vista/7 Mac: OS X v10.3.9 or later	Windows: 2000/XP/Vista/7 Mac: OS X v10.3.9 or later	Windows: 2000/XP/Vista Mac: OS v9.1 or later, OS X v10.2 or later	Windows: Vista/XP/2000 Mac: OS X v10.3.9–10.5.X or later	Windows: Vista/XP/2000 Mac: OS X v10.3.9–10.5.X or later
Buffer/RAM	640MB	384MB	384MB	384MB	192MB	42KB	42KB
Hard Drive	80GB	80GB	80GB	N/A	N/A	N/A	N/A
Media Width	8–60"/203.2–1,524mm	8–44"/203.2–1,118mm	8–24"/203.2–610mm	8–24"/203.2–610mm	8–17"/203.2–432mm	4–14"/101.6-355.6mm	4–14"/101.6-355.6mm
Maximum Print Length	Roll: 59'/18m	Roll: 59'/18m	Roll: 59'/18m Top: 5.2'/1.6m Front: 36"/914mm	Roll: 59'/18m Top: 5.2'/1.6m Front: 36"/914mm	Roll: 59'/18m Cassette: 23.38"/594mm Top: 5.2ft./1.6m Front: 36"/914mm	ASF: 19"/482.6mm Front Feeder: 19"/482.6mm	ASF: 19"/482.6mm Front Feeder: 19"/482.6mm
Paper Thickness	Roll Feed/Cut Sheet: 0.07–0.8mm	Roll Feed/Cut Sheet: 0.07–0.8mm	Roll Feed: 0.07–0.8mm Manual Top Loading: 0.07–0.8mm Manual Front Loading: 0.5–1.5mm	Roll Feed: 0.07–0.8mm Manual Top Loading: 0.07–0.8mm Manual Front Loading: 0.5–1.5mm	Roll Feed: 0.07–0.8mm Cassette: 0.08–0.3mm Manual Top Loading: 0.08–0.5mm Manual Front Loading: 0.5–1.5mm	Front Feeder: up to 1.2mm	Front Feeder: up to 1.2mm
Paper Handling	Roll Paper: 10–60"/254–1,524mm (width), 59.06'/18m (length) Cut Paper: 8–60"/203.2–1,524mm (width), 5.25'/1.6m (length)	Roll Paper: 10–44"/254–1117.6mm (width), 59.06'/18m (length) Cut Paper: 8–44"/203.2–1117.6mm (width), 5.25'/1.6m (length)	Roll Feed: 1 roll top loading, front exit; 8–24"/203.2–610mm (width), 8"–59'/203.2mm–18m (length), 5.90"/150mm (max. roll diameter) Manual Top Loading: front loading, front exit: 8–24"/203.2–610mm (width), 10–63.0"/254–1,600mm (length) Manual Front Loading: 9.8–24.0"/250–610mm (width), 13.8–63.0"/350–1,600mm (length)	Roll Feed: 1 roll top loading, front exit; 8–24"/203.2–610mm (width), 8"–59'/203.2mm–18m (length), 5.90"/150mm (max. roll diameter) Manual Top Loading: front loading, front exit: 8–24"/203.2–610mm (width), 10–63.0"/254–1,600mm (length) Manual Front Loading: 9.8–24.0"/250–610mm (width), 13.8–63.0"/350–160mm (length)	Roll Feed: 1 roll top loading, front exit: 8–17"/203.2–431.8mm (width), 8"–59ft./203.2mm–18m (length), 5.90"/150mm (max. roll diameter) Cassette: front loading, front exit: 8–17in./203.2–431.8mm (width), 10–23.38"/254–594mm (length) Manual Top Loading: front exit: 8–17"/203.2–431.8mm (width), 10.98– 24"/279– 610mm (length) Manual Front Loading: front exit: 8–17"/203.2–431.8mm (width), 20.47–24"/520–610mm (length)	Auto Sheet Feed: 150 sheets Plain Paper, 20 sheets 4x6, 10 sheets 13x19, 8.5x11, 8x10. Front Feed: 1 sheet up to 12mm thick.	Auto Sheet Feed: 150 sheets Plain Paper, 20 sheets 4x6, 10 sheets 13x19, 8.5x11, 8x10. Front Feed: 1 sheet up to 12mm thick.
Printable Area	Minimal Printable Paper Length: 8"/203.2mm Maximum Printable Paper Length: Roll Paper: 59.06'/18m Cut Sheet: 5.25'/1.6m	Minimal Printable Paper Length: 8"/203.2mm Maximum Printable Paper Length: Roll Paper: 59.06'/18m Cut Sheet: 5.25'/1.6m	Roll Feed (borderless): 0–0.12"/0–3mm (top, bottom, sides) Top: 0.12"/3mm (top, bottom, sides), 0.9"/23mm (bottom for art paper) Front: 0.12"/3mm (Top, sides), 0.9"/23mm (bottom)	Roll Feed (borderless): 0–0.12"/0–3mm (top, bottom, sides) Top: 0.12"/3mm (top, bottom, sides), 0.9"/23mm (bottom for art paper) Front: 0.12"/3mm (Top, sides), 0.9"/23mm (bottom)	Roll Feed (borderless): 0–0.12in./0–3mm (top, bottom, sides) Cassette: 0.12"/3mm (top, bottom, sides) Top: 0.12"/3mm (top, bottom, sides), 0.9"/23mm (bottom for art paper) Front: 0.12"/3mm (Top, sides), 0.9"/23mm (bottom)	Normal: 3mm (top), 5mm (bottom), 3.4mm (sides): letter & legal 6.4mm (left) / 6.3mm (right) (supported paper sizes: LDR, LDR+, 13" x 19", 14" x 17", 10" x 12", letter, 8" x 10", 5" x 7", 4" x 6") Recommended printing area: 35mm (top), 30.5mm (bottom); For Grayscale printing: 45mm (top/bottom) When printing on Fine Art Paper: 35mm (top), 30.5mm (bottom)	Normal: 3mm (top/bottom), 3.4mm (sides): letter & legal 6.4mm (left)/6.3mm (right); Borderless: 0mm (top/ bottom/sides) (supported paper sizes: LDR, LDR+, A3, A3+, A4, 14"x17", 10"x12", letter, 8"10", 5"x7", 4"x6") Recommended printing area: 35mm (top), 30.5mm (bottom); For Grayscale printing: 45mm (top/bottom); For Museum Etching/Premium Matte/other fine art paper: 35mm (top/bottom)
Maximum Media Roll Diameter	5.9"/150mm (2- or 3-inch spool)	5.9"/150mm (2- or 3-inch spool)	5.9"/150mm (2- or 3-inch spool)	5.9"/150mm (2- or 3-inch spool)	5.9"/150mm (2- or 3-inch spool)	N/A	N/A
Borderless Printing Width	20.28"/515mm (IIS B2), 1,030mm (IIS B0), 23.4"/594mm (ISO A1), 841mm (ISO A0), 10", 14", 16", 24", 36", 42"	20.28"/515mm (IIS B2), 1,030mm (IIS B0), 23.4"/594mm (ISO A1), 841mm (ISO A0), 10", 14", 16", 24", 36", 42", 44"	10"/254mm, 257mm (B4), 329mm (A3+), 14"/355.6mm, 16"/406.4mm, 420mm (A2), 17"/432mm, 515mm (B2), 594mm (A1), 24"/610mm	10"/254mm, 257mm (B4), 329mm (A3+), 14"/355.6mm, 16"/406.4mm, 420mm (A2), 17"/432mm, 515mm (B2), 594mm (A1), 24"/610mm	10"/254mm, 14"/355.6mm, 16"/406.4mm, 17"/432mm, 24"/610mm	10"/254mm, 13"/330.2mm, 14"/355.6mm, 16"/406.4mm, 17"/432mm, 19"/482.6mm	10"/254mm, 13"/330.2mm, 14"/355.6mm, 16"/406.4mm, 17"/432mm, 19"/482.6mm
Noise Level (approx.)	Operation: 51 dB (A) or less Standby: 35 dB (A) or less	Operation: 50 dB (A) or less Standby: 35 dB (A) or less	Operation: 47 dB (A) or less Standby: 35 dB (A) or less	Operation: 47 dB (A) or less Standby: 35 dB (A) or less	Operation: 51 dB (A) or less Standby: 35 dB (A) or less	36.0 dB (A) in the best quality mode	42.5 dB (A) in the best quality mode
Physical Dimensions (W x D x H, body only)	90.5 x 30.2 x 45.0"/2,299 x 766 x 1,144mm (includes stand)	74.5 x 38.4 x 45.0"/1,893 x 975 x 1,144mm (includes stand)	46.3 x 34.3 x 39.1"/1,177 x 870 x 991mm	46.3 x 34.3 x 39.1"/1,177 x 870 x 991mm	39.3 x 31.9 x 13.5"/999 x 810 x 344mm	26.0 x 13.9 x 7.6"/660 x 354 x 191mm	26.0 x 13.9 x 7.6"/660 x 354 x 191mm
Weight (body only, excluding consumables)	Approx. 362 lbs./164kg	Approx. 316 lbs./143kg	Approx. 146 lbs./66kg	Approx. 146 lbs./66kg	108 lbs./49kg	33.9 lbs./15.4kg	33.9 lbs./15.4kg
Power Source	AC 100–120V (50/60Hz)	AC 100–120V (50/60Hz)	AC 100–120V (50/60Hz)	AC 100–120V (50/60Hz)	AC 100–120V (50/60Hz)	AC100–240V (50/60Hz)	AC100–240V (50/60Hz)
User-Replaceable Items	Print Head, Ink Tank, Maintenance Cartridge, Cutter Blade	Print Head, Ink Tank, Maintenance Cartridge, Cutter Blade	Print Head, Ink Tank, Maintenance Cartridge	Print Head, Ink Tank, Maintenance Cartridge	Print Head, Ink Tank, Maintenance Cartridge	Print Head, Ink Tank	Print Head, Ink Tank

* Print speed measured as soon as first page begins to feed into printer and will vary depending upon a number of factors.
High mode driver setting is the default mode for photo paper. See www.usa.canon.com/printspeed for additional information.

MEDIA COMPATIBILITY CHART

			imagePROGRAF iPF9100	imagePROGRAF iPF8300	imagePROGRAF iPF6350	imagePROGRAF iPF6300	imagePROGRAF iPF5100	PIXMA Pro9500 Mark II	PIXMA Pro9000 Mark II
Paper	Plain	Plain Paper	•	•	•	•	•	•	•
		Super White Paper						•	•
		Universal Bond Paper	•	•	•	•	•		
	Coated	Premium Super-Gloss	•	•					
		Coated Paper	•	•	•	•	•		
		Matte Coated Paper	•	•	•	•	•		
		Matte Coated Paper (170)	•	•					
		Premium Matte Paper	•	•	•	•	•		
		Heavyweight Coated Paper	•	•	•	•	•		
		Heavyweight Matte Coated Paper (230)	•	•					
		High Resolution Paper			•	•	•		•
Photo	Gloss	Photo Paper Pro							•
		Photo Paper Glossy			•	•	•	•	•
		Photo Paper Plus Glossy Double Sided							•
		Photo Paper Plus Semi-Gloss			•	•	•	•	•
		Semi-Glossy Photo Paper							
		Glossy Photo Paper						•	•
		Glossy Photographic Paper (190)	•	•	•	•	•		
		Glossy Photographic Paper (240)	•	•	•	•	•		
		Heavyweight Glossy Photographic Paper	•	•	•	•	•		
		Premium Bright Photo Glossy Paper	•	•	•	•	•		
		Premium Luster Photographic Paper	•	•	•	•	•		
		Premium RC Photogloss	•	•					
	Matte/ Satin	Matte Photo Paper			•	•	•	•	•
		Premium RC Photomatte	•	•					
		Satin Photographic Paper (190)	•	•	•	•	•		
		Satin Photographic Paper (240)	•	•	•	•	•		
		Premium Bright Photo Satin Paper	•	•	•	•	•		
		Heavyweight Satin Photographic Paper	•	•	•	•	•		
Fine Art	Fine Art	Fine Art Premium Matte			•	•	•	•	•
		Fine Art Watercolor	•	•	•	•	•		
	Rag	Fine Art Photo Rag	•	•	•	•	•	•	•
		Fine Art Bright White 230gsm	•	•	•	•	•		
		Fine Art Smooth Bright White 330gsm	•	•	•	•	•		
		Fine Art Natural 230gsm	•	•	•	•	•		
		Fine Art Photo Rag by Hahnemuhle 188gsm	•	•	•	•	•		
		Fine Art Photo Rag by Hahnemuhle 308gsm	•	•	•	•	•		
		Fine Art Photo Rag by Hahnemuhle 460gsm			•	•	•		
	Velvet/ Canvas	Fine Art German Etching by Hahnemuhle 310gsm	•	•	•	•	•		
		Fine Art Museum Etching						•	•
		Fine Art Enhanced Velvet 225gsm	•	•	•	•	•		
		Fine Art Enhanced Velvet 255gsm	•	•	•	•	•		
		Fine Art Enhanced Velvet 505gsm			•	•	•		
		Fine Art Water Resistant Canvas	•	•					
		Canvas Semi-Glossy	•	•	•	•	•		
		Graphic Matte Canvas	•	•	•	•	•		
Speciality	Film	White Glossy Film	•	•					
		Backlit Film	•	•	•	•	•		
		Backprint Film	•	•	•	•	•		
	Proofing	Commercial Proofing Paper	•	•	•	•	•		
		Commercial RC Proofing Paper	•	•	•	•	•		
		Premium Proofing Paper	•	•	•	•	•		
	Banner	Banner Vinyl	•	•					
		Adhesive Matte Vinyl	•	•					
		Tyvek® Banner	•	•					
		Durable Banner	•	•	•	•			
		Removeable Banner Vinyl	•	•					
	Others	T-Shirt Transfer							•
		Envelope							•

Specifications subject to change without notice.



The images used throughout this brochure, unless not noted, are photographed by "Canon Explorers of Light," a select group of photographers who shoot with Canon EOS System cameras. They are among the top photographers in the world and work in diverse photographic disciplines including journalism, nature, fashion, fine-art, portrait and commercial.

Various EOS products photographed by Michel Tcherevkoff, Explorer of Light, who shoots with the EOS-1Ds Mark III.



To learn more about Explorers of Light and see more images taken by them, visit the Canon Digital Learning Center at: usa.canon.com/dlc

All LCD images and effects are simulated. All data are based on Canon's Standard Test Method. Specifications and availability subject to change without notice. Canon, EOS, imagePROGRAF, LUCIA, PIXMA, PowerShot, REALIS and VIXIA are registered trademarks of Canon Inc. in the United States and may also be registered trademarks or trademarks in other countries. IMAGEANYWARE is a trademark of Canon. All other products and brand names are registered trademarks, trademarks or service marks of their respective owners.

Adobe and Photoshop are either registered trademarks or trademarks of Adobe Systems Incorporated in the United States and/or other countries.



1-800-OK-CANON
usa.canon.com/eos

Canon U.S.A., Inc.
One Canon Plaza
Lake Success, NY 11042 U.S.A.

Canon Canada, Inc.
6390 Dixie Road
Mississauga, Ontario L5T 1P7 Canada

Canon Latin America, Inc.
703 Waterford Way, Suite 400
Miami, FL 33126 U.S.A.

Canon Mexicana, S. de R.L. de C.V.
Blvd. Manuel Ávila Camacho No. 138, Piso 17
Col. Lomas de Chapultepec
C.P. 11000 México, D.F. México

©2010 CANON U.S.A., INC.
PRINTED IN U.S.A.