

Canon

imagePROGRAF
iPF MFP M40

imagePROGRAF



**TECHNICAL
DOCUMENTS**

MFP LARGE-FORMAT IMAGING





Introducing the imagePROGRAF iPF MFP M40 System

Large-format scan-to-copy/
file/share solutions



The Canon imagePROGRAF iPF MFP M40 systems are multicomponent, multifunction solutions for architects, engineers, construction, GIS, and other professionals who need to scan, edit, save, share, and print large-format documents easily and efficiently.

FEATURES

- **M40 Scanner** with SingleSensor assembly technology* delivers incredibly fast and accurate scan speeds.
- **SmartWorks MFP** scan to copy/file/share software includes new custom presets, image enhancements, and all new cloud integration.
- **Direct Print & Share is** Canon's Cloud Portal software for file sharing.
- **A customizable system**—choose between 36" or 44" printers for maximum versatility.
- **Computer, Touch-Screen Monitor, and Stand** are all included in the system.

* SingleSensor assembly technology means that multiple sensors are contained in one assembly device.

imagePROGRAF MFP

VERSATILITY

Choose the printer that best fits your workflow—and budget. With five imagePROGRAF models in the MFP M40 system line-up, it's easy to customize your system.

CANON TECHNOLOGY

Unique 5-Color Reactive Ink System

- High resolution: up to 2400 x 1200 dpi output
- Double set of Matte Black ink channels maximizes monochrome print speed
- Economy print mode helps cut down on ink cost for draft prints
- 15,360-nozzle print-head with FINE technology

MORE THAN JUST DRAWINGS

Canon's imagePROGRAF 5-color line of printers has what you need to simplify, strengthen, and complete your workflow. For poster creation made simple, Canon's **PosterArtist Lite** software gives you the tools you need to help you produce an eye-popping banner or display in just a few easy steps. Also included are a **Print Plug-in for Microsoft® Office** and **Accounting Manager*** software to help you keep track of ink, media, and total job costs.

*PC only



iPF825



iPF815

iPF825/iPF815

- 44" 5-color large-format printers
- Dual-roll capability with automatic switching for enhanced production (iPF825 only)
- Large-capacity ink tanks (330ml and 700ml tanks available)
- Built-in 160GB hard drive
- Sub ink tank system



iPF765



iPF760

iPF765/iPF760

- 36" 5-color large-format printers
- Flat stacker/basket neatly stacks up to 20 plain paper prints, 24" x 36" in size
- Interface lock system allows you to password-protect all user interfaces
- Built-in 250GB hard drive (iPF765 only)



iPF750

- 36" 5-color large-format printer
- Borderless printing
- Bundled with a variety of software solutions to help enhance your workflow
- Entry-level, low-cost solution

imagePROGRAF iPF MFP M40 SYSTEM

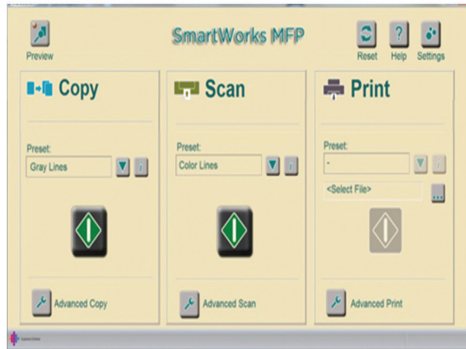
M40 SCANNER



The M40 scanner with SingleSensor assembly technology brings the MFP solution to a whole new level. You have the ability to scan documents at incredible speeds and, with the included USB 3 connection, experience data transfer speeds of up to 10 times faster than on previous MFP models! The intuitive control panel embedded on the scanner helps make operation of the device incredibly easy, and its compact design helps space become a non-issue when using and storing the device.

- Optical resolution of 1200 dpi
- Scan speeds of 13 inches per second monochrome and 3 inches per second color
- Capability to accept media of different thickness (up to 2mm)

SMARTWORKS



The included SmartWorks MFP scan-to-copy/file/share software has been enhanced and now helps you to be more efficient than ever before.

- New user interface for easy navigation
- Ability to add custom presets with one-touch retrieval for those often-used settings
- New image enhancements for white point adjust, black point adjust, sharpen, mirror, and invert
- Full integration with Direct Print & Share Cloud Portal software

SYSTEM

Experience the vast customization options that come with your MFP system. The Canon imagePROGRAF iPF MFP M40 large-format imaging system is designed to be a complete scan-to-copy, file, and share solution. The system includes an imagePROGRAF iPF large-format printer, M40 large-format scanner, MFP stand, computer, SmartWorks MFP software, and a large touch-screen monitor. This solution provides a fast and effective system for printing, copying, archiving, and distributing maps, drawings, renderings, site and facilities management plans, design and layout proofs, posters, and more.

With the iPF765 or iPF760 printer, the integrated stand allows the user to position the monitor in a variety of configurations to provide optimal functionality and comfort, as well as allowing the user to mount the stand onto the printer for a true all-in-one structure, or keep them separate for easy maneuverability. The MFP solution includes a touch-screen monitor, and users now have the option of selecting to have their scanned documents come straight out the back of the scanner, or rewind to the front for easy retrieval. Customization is truly brought to a whole new level with the iPF MFP M40 system.

- Fully operational PC for vast customization and creativity
- Integrated stand for structural customization (iPF765 and iPF760 printers only)

MARKETS

The iPF MFP M40 system is designed to help bring a fully operational work solution to you out in the field and provide you with all the tools to help enhance your technical document productivity. Whether you have a low-volume architecture firm or a high production enterprise environment, you can choose the right printing solution to meet your workflow requirements. See how the MFP solution can bring your business to the next level. This solution's capability to help you produce high image quality at impressive speeds—and achieve remarkable productivity—help make it a welcome addition for anyone looking to advance in the AEC, GIS, and other technical industries.

M40 Large-Format Scanner

- SingleSensor assembly technology
- Scans images up to 40" wide

SmartWorks MFP Software

Featuring one-touch "green button"
Copy, Scan, and Print functions

Touch-Screen Monitor



**On-Board PC Software
and Workflow Solutions**

- Direct Print and Share
Cloud Portal Solution
- PosterArtist Lite
- Canon Printer Driver
- Print Plug-in for
Microsoft Office
- Accounting Manager
Feature

Large-Format Ink-Jet Printer
Five models to choose from

MFP Stand



DIRECT PRINT & SHARE SOFTWARE

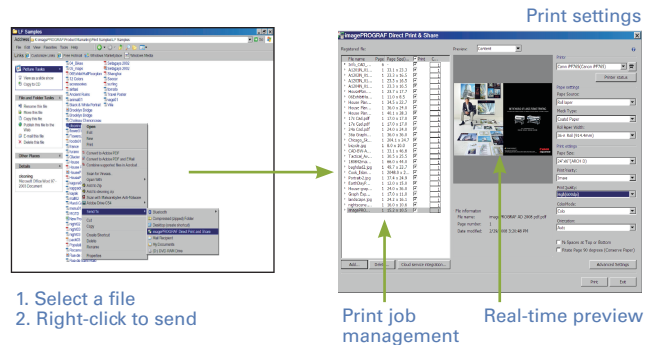
Canon's Direct Print & Share* is a cloud-based portal service that allows users to expand their workflow. Through a Google** account, users are given the ability to scan and upload documents to their own cloud storage space and have those documents printed from almost anywhere!

Easily print PDFs, TIFFs, and JPEGs through the user-friendly interface, and even have the ability to do batch printing. To help further integrate with your Canon printer and software, Direct Print & Share comes with a print plug-in for SmartWorks MFP V3 (also included) and AutoCAD® (sold separately) to make cloud use through this software incredibly easy. Scan, upload, download, and print directly from these software solutions to help streamline your workflow.

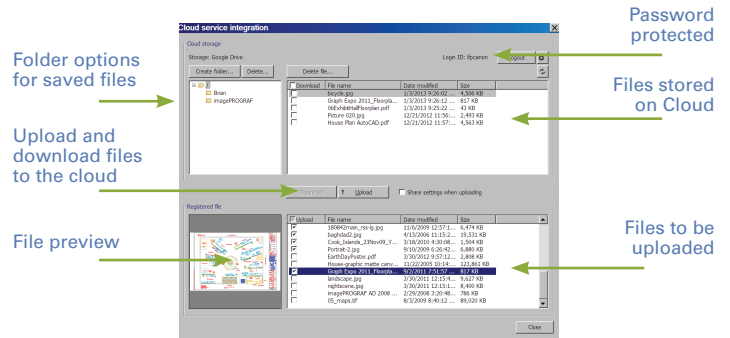
FEATURES

- Accessible from almost anywhere in the world
- 5GB of free storage
- Batch printing of multiple files
- Integration with software solutions, such as SmartWorks MFP V3 and AutoCAD
- Drag-and-drop TIFF, JPEG, and PDF files to shortcut icon

iPF Direct Print & Share



Cloud Service Integration



*Direct Print & Share comes embedded with the imagePROGRAF iPF MFP M40 System, and is also available as a free download at <http://usa.canon.com/downloads>.

**You must open a Google Cloud account to take advantage of the cloud functionality. Storage capacity and any pricing thereof is based on Google's current offering and is at Google's discretion. Your Google Cloud account is subject to Google's terms and conditions, which is subject to change at Google's discretion. Neither Canon Inc., nor Canon U.S.A., Inc. represents or warrants any third-party product, service or feature referenced hereunder.

imagePROGRAF



PRINTER SPECIFICATIONS

Output Width

44" Wide

Number of Ink Tanks

6

Color Set

Dye: Cyan, Magenta, Yellow, Black

Pigment: Matte Black

Ink Type

Dye/Pigment Reactive Ink

Ink Tank Size

330ml and 700ml

Maximum Print Resolution (dpi)

2400 x 1200

Total Number of Nozzles

15,360

Ink Droplet

Consistent 4pl

Maximum Print Speed

(1200 x 1200 dpi on Plain Paper)

688 sq.ft. per hr.*

Print Speed Best Quality Mode

(2400 x 1200 dpi on Photo Gloss Paper)

89 sq.ft. per hr.*

Software/Utilities/Applications

- Canon Printer Driver
- HDI Driver
- Print Plug-in for Microsoft Office
- Digital Photo Front-Access
- Remote User Interface
- Media Configuration Tool
- Supports HP-GL/2, HP RTL Files
- PosterArtist Lite
- PosterArtist (optional) (PC only)
- Third-Party RIPs (optional)

Special Features

- Dual Media Rolls (iPF825 only)
- Accounting Manager (PC only)
- Economy Color Mode
- Sub Ink Tank System
- Independent Rotary Cutter

Printer Dimensions (H x W x D)

iPF825: 45" x 74.5" x 50.9" (with basket)

iPF815: 45" x 74.5" x 38.4

Printer Weight

iPF825: Approx. 417 lb.

iPF815: Approx. 305 lb.

Printer Memory

384MB RAM

32GB Dedicated File Processing Memory

Hard Drive

160GB

Connectivity

USB 2.0: 10/100Base-T/TX

Operating System

Windows®, ** Macintosh®**

* OS: Windows XP SP2, CPU: Pentium® 4 3.2GHz, RAM: 1GB, Application: Adobe® Photoshop® 7.0, Interface: USB 2.0 Hi-Speed, Data used: ISO/JIS-SCID No.5, Output image size: A1 (580mm x 724.9mm) for iPF655/650/610, A2 (410mm x 512.5mm) for iPF510 using optional Roll Feed. Measured by Canon Inc. Each print time does not include data transfer time. The print speed may vary depending on the data volume and size, PC, application, software, media type, and interface.

** Please visit www.usa.canon.com/download for availability.



PRINTER SPECIFICATIONS

Output Width

36" Wide

Number of Ink Tanks

6

Color Set

Dye: Cyan, Magenta, Yellow, Black

Pigment: Matte Black, Matte Black

Ink Type

Dye/Pigment Reactive Ink

Ink Tank Size

130ml†

Maximum Print Resolution (dpi)

2400 x 1200

Total Number of Nozzles

15,360

Ink Droplet

Consistent 4pl

Maximum Print Speed

(1200 x 1200 dpi on Plain Paper)

733 sq.ft. per hr.*

Print Speed Best Quality Mode

(2400 x 1200 dpi on Photo Gloss Paper)

79 sq.ft. per hr.*

Software/Utilities/Applications

iPF765/760

- Canon Printer Driver
- Optimization Module for AutoCAD (PC only)
- Print Plug-in for Microsoft Office
- Remote User Interface
- Media Configuration Tool
- PosterArtist Lite
- PosterArtist (optional) (PC only)
- Third-Party RIPs (optional)

iPF750

- Canon Printer Driver
- HDI Driver
- Digital Photo Front-Access
- Print Plug-in for Microsoft Office
- Remote User Interface
- Media Configuration Tool
- Supports HP-GL/2, HP RTL
- PosterArtist Lite
- PosterArtist (optional) (PC only)
- Third-Party RIPs (optional)

Printer Dimensions (H x W x D)

41.8" x 51.3" x 34.5"

41.8" x 51.3" x 43.3 (when Basket is in the extended position for flatbed stacking, iPF765/760 only)

Printer Weight

Approx. 141.3 lb.

Special Features

iPF765/760

- Flat Stacker/Basket
- Interface Lock
- Accounting Manager (PC only)
- Sub Ink Tank System
- Top-loading Roll Feed

iPF750

- Accounting Manager (PC only)
- Sub Ink Tank System
- Top-loading Roll Feed
- Gigabit Ethernet Support
- Intuitive Operation Panel

Printer Memory

256MB (32GB iPF765 only)

Hard Drive

250GB (iPF765 only)

Connectivity

USB 2.0: 10/100/1000Base-T/TX

Operating System

Windows, ** Macintosh**

† The starter ink tanks in the package with the printer are not the same capacity as the replacement ink tanks specified here.

* OS: Windows XP SP2, CPU: Pentium 4 3.2GHz, RAM: 1GB, Application: Adobe Photoshop 7.0, Interface: USB 2.0 Hi-Speed, Data used: ISO/JIS-SCID No.5, Output image size: A0 (827mm x 1033.8mm). Measured by Canon Inc. Each print time does not include data transfer time. The print speed may vary depending on the data volume and size, PC, application, software, media type, and interface.

** Please visit www.usa.canon.com/download for availability.

imagePROGRAF

M40 SCANNER SPECIFICATIONS



Scan Speed*

- 48-bit Full Color @ 200 dpi: 3" (per second)
- 8-bit Grayscale and Monochrome @ 200 dpi: 13" (per second)

Scan Modes

- 16.7-million Color RGB (24-bit)
- 256 color RGB Adaptive Indexed Color Palette (8-bit)
- 256-level Grayscale (8-bit)
- Black and White (1-bit)

Color Space

Normalized RGB

Resolution

- 9600 dpi (maximum interpolated)
- 1200 dpi (optical)

Scan Accuracy**

+/- 0.1% ; +/- 1 pixel

Maximum Image Width

40"

Maximum Media Width

42"

Maximum Scan Length

96"

Maximum Media Thickness

0.079" (2mm)

Media Feed System

Single large diameter precision ground drive roller; adaptive CIS media focus management and media guide mechanism; intuitive face-up, front-loading, and front/rear-exit media path with side justification; automatic media size detection with reliable optical media sensors

Digital Imaging Technology

Contact Image Sensor (CIS) Technology (SingleSensor Assembly)

- 5x close-spaced "deep focus" CIS (25,000 pixels)
- 48-bit RGB digital color image capture (50,400 pixels)
- 16-bit grayscale image capture
- Panchromatic monochrome and black and white
- Bi-directional extra long-life LED light system for optimum object illumination and instant-on scanning capability

Digital Image Processing

- 2D Intelligent Adaptive Thresholding (IAT) (1-bit mode)
- Fixed Threshold Black and White (1-bit mode)
- Dynamic Normalization Application (DNA) with 16-bit Super Sampling

User Status and One-Touch Operation

Center mounted LCD scanner control panel; walk-up operation and user selection of scanner mode with stop, forward, rewind, scan, and copy buttons; local language options, panel overlay, and Magnetic Media Guide

Included Software

- SmartWorks MFP Scan-to-file, Copy, E-mail with Real-time Image Viewer. Supports TIFF, JPEG, TIFF G4, and PDF.
- Direct Print & Share Cloud Portal Solution

Operating System

Windows 7 Professional (64-bit)

User Maintenance

Installable Plug-and-Play Scanner; Simple Cleaning

Scanner Interface Kit

Superspeed USB 3.0 (PC Connector Compatible with USB 2.0 and USB 3.0 sockets)

Operating Environments

10 – 35°C, 35-80% RH, Non-condensing

External Power Supply

100-250 VAC Autosensing +/- 10%, 50-60Hz

Scanner Power Consumption

- 53Wh (scanning)
- 5Wh (stand-by)

Compliances

VCCL, CB, CE, FCC, UL, RoHS, ENERGY STAR®

Stand and Scanner Dimensions

Height: Swing Arm: 57.5"
Straight Arm (max): 66"
Width: Swing Arm (max): 69.9"
Straight Arm: 53.6"
Depth: 31.5"

Stand and Scanner Weight

Approx. 120.4 lb.

What's In The Box?

- M40 Scanner with Power Cord and USB 3.0 and USB 2.0 Cables (scanner to server)
- 2 Meter USB Cable (server to printer)
- M40 MFP Stand
- M40 MFP Stand Assembly Instructions
- SmartWorks MFP Software
- Computer
- Flat Panel Touch-screen Display
- Installation and Operation Manual
- Operator Manual on CD-ROM
- Document Return Guide
- Magnetic Paper Guide

* The scan rate is proportional across the full range of resolutions supported by the scanner. Actual scan times will depend on the host system performance. Quoted top speeds may be limited by the effective bandwidth of the USB 2 and is not guaranteed for all media types.

** The quoted scan accuracy may vary depending on the operating environment and the thickness of the media.

Canon
image*ANYWARE*

1-800-OK-CANON
www.usa.canon.com

Canon U.S.A., Inc.
One Canon Park
Melville, NY 11747

The imagePROGRAF iPF MFP M40 systems contain multiple components, some of which are manufactured by third parties. To the extent that such third party offerings come with limited warranties, such limited warranties are hereby passed to the purchaser, and Canon shall have no obligation or any liability with respect to such third party offerings.

As an ENERGY STAR® Partner, Canon U.S.A., Inc. has determined that this product meets the ENERGY STAR guidelines for energy efficiency. ENERGY STAR and the ENERGY STAR mark are registered U.S. marks. CANON, IMAGEPROGRAF, and the GENUINE logo are registered trademarks of Canon Inc. in the United States and may also be registered trademarks or trademarks in other countries. IMAGEANYWARE is a trademark of Canon. All other referenced product names and marks are trademarks of their respective owners and are hereby acknowledged. Some items may not be available at this time; please check for availability. Specifications and availability subject to change without notice. All printer output images and effects are simulated. MFP shown with iPF825 and iPF765 printer. ©2013 Canon U.S.A., Inc. All rights reserved.

0175W110
0313-iPFM40-5M-LCR

