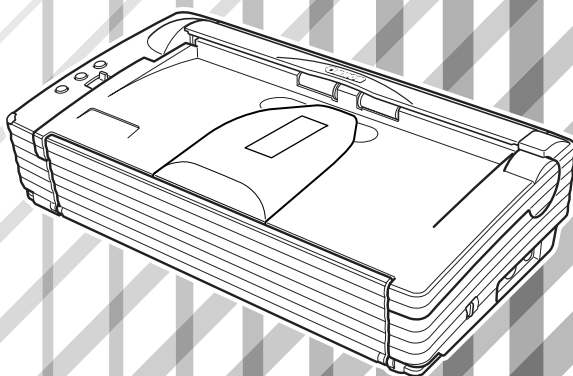


# Canon

## Document Scanner **DR-2580C**

### Startup Manual



Please read this manual before operating this unit. After you finish Reading this manual, store it in a safe place for future reference.

## International Energy Star® Program



As an Energy Star Partner, Canon Electronics Inc., has determined that this machine meets the Energy Star Program guidelines for energy efficiency.

The International Energy Star Office Equipment Program is an international program that promotes energy saving through the use of computers and other office equipment.

The program backs the development and dissemination of products with functions that effectively reduce energy consumption. It is an open system in which business proprietors can participate voluntarily. The targeted products are office equipment, such as computers, monitors, printers, fax, machine, copiers, and scanners. The standards and logos are uniform among participating nations.

## Trademarks

- Canon and the Canon logo are trademark of Canon Inc.
- Microsoft and Windows are registered trademarks of Microsoft Corporation in the United States and other countries.
- ISIS is a trademark of Pixel Translations, a division of Captiva Software Corporation, in the United States.
- Intel and Pentium are registered trademarks of Intel Corporation.
- Adobe is a trademark of Adobe Systems Incorporated.
- Other product and company names here in may be the trademarks of their respective owners.

## Copyright

Copyright 2005 by CANON ELECTRONICS INC. All rights reserved. No part of this publication may be reproduced or transmitted, in any form or by any means, electronic or mechanical, including photocopying and recording, or by any information storage or retrieval system without the prior written permission of CANON ELECTRONICS INC.

## Disclaimers

The information in this document is subject to change without notice.

CANON ELECTRONICS INC. MAKES NO WARRANTY OF ANY KIND WITH REGARD TO THIS MATERIAL, EITHER EXPRESS OR IMPLIED, EXCEPT AS PROVIDED HERE IN, INCLUDING WITHOUT LIMITATION, THE REOF, WARRANTIES AS TO MARKETABILITY, MERCHANTABILITY, FITNESS FOR A PARTICULAR PUEPOSE OF USE OR AEAINST IN FRIGEMENT OF ANY PATENT. CANON ELEC-TRONICS INC. SHALLNOT BE LIABLE FOR ANY NATURE, OR LOSSES OR EXPENSES RESULTING FROM THE USE OF THIS METERIAL.

## **READ CAREFULLY BEFORE OPENING THE SEALED DISK PACKAGE**

### **CANON SOFTWARE LICENSE AGREEMENT**

#### **IMPORTANT-READ THIS AGREEMENT BEFORE OPENING THE SEALED DISK PACKAGE! BY OPENING THE SEALED DISK PACKAGE, YOU ARE DEEMED TO AGREE TO BE BOUND BY THIS AGREEMENT.**

This legal document is a license agreement between you and Canon Electronics Inc. ("Canon"). BY OPENING THE SEALED DISK PACKAGE, YOU ARE DEEMED TO AGREE TO BE BOUND BY THE TERMS OF THIS AGREEMENT. IF YOU DO NOT AGREE TO THE TERMS OF THIS AGREEMENT, DO NOT OPEN THE SEALED DISK PACKAGE AND PROMPTLY RETURN THE CANON SCANNER, THE DISK PACKAGE CONTAINING SCANNER DRIVER SOFTWARE PROGRAMS AND/OR SCANNER UTILITY SOFTWARE PROGRAM PROPRIETARY TO CANON OR ITS LICENSOR (THE "SOFTWARE") AND THE ACCOMPANYING DOCUMENTATION AND OTHER ITEMS TO THE PLACE WHERE YOU OBTAINED THEM FOR A REFUND BEFORE THEY ARE USED OR OPENED OR UNPACKED.

In consideration of the right to use the SOFTWARE, you agree to abide by the terms and conditions of this Agreement.

**1. GRANT OF LICENSE:** Canon grants you the personal, non-exclusive right to use the SOFTWARE only on a single computer. You may physically transfer the SOFTWARE from one computer to another provided that the SOFTWARE is used on only one computer at any time.

You shall not assign, sublicense, sell, rent, lease, loan, convey or transfer to any third party, or send or bring the SOFTWARE out of the country where you originally obtain it to other countries without required authorization of applicable governments, or copy, duplicate, translate or convert to another programming language the SOFTWARE or accompanying documentation, except as expressly provided herein.

Except as expressly permitted under the applicable law, you shall not alter, modify, disassemble, decompile or otherwise reverse engineer the SOFTWARE or accompanying documentation and you also shall not have any third party do so.

**2. BACK-UP COPY:** You may make one copy of the SOFTWARE solely for a back-up purpose or copy the SOFTWARE onto the permanent storage device (e.g. a hard disk) of your computer and retain the original for a back-up purpose. Except as expressly permitted under the applicable law, any other copying of the SOFTWARE is a violation of this Agreement. You must reproduce and include the copyright notice on the back-up copy.

**3. SUPPORT AND UPDATE:** Canon, Canon's affiliate, their distributor or dealer is not responsible for maintaining or helping you to use the SOFTWARE. No updates, fixes or support will be made available for the SOFTWARE.

**4. LIMITED WARRANTY AND DISCLAIMER OF INDEMNITY:** Canon, Canon's affiliate, their distributor or dealer will not guarantee uninterrupted service, or absence or correction of errors. Therefore, the SOFTWARE is licensed on an "AS IS" basis without warranty of any kind. The diskette on which the SOFTWARE is recorded is warranted against defective material or workmanship under normal use for a period of ninety (90) days from the date you purchased the same as evidenced by a receipt or otherwise. The limited warranty does not apply if the failure of the diskette resulted from accident, abuse or misapplication of the SOFTWARE and shall not extend to anyone other than the original user of the SOFTWARE.

CANON, CANON'S AFFILIATE, THEIR DISTRIBUTOR OR DEALER DISCLAIMS ALL IMPLIED WARRANTIES, INCLUDING ANY WARRANTY OF MERCHANTABILITY OR FITNESS FOR A PARTICULAR PURPOSE, WITH RESPECT TO THE SOFTWARE OR ACCOMPANYING DOCUMENTATION.

NEITHER CANON, CANON'S AFFILIATE, THEIR DISTRIBUTOR NOR DEALER IS LIABLE FOR ANY LOSS OR DAMAGE INCLUDING CONSEQUENTIAL OR INCIDENTAL LOSS OR DAMAGE SUCH AS LOSS OF PROFITS, EXPENSE OR INCONVENIENCE, WHATSOEVER CAUSED BY OR ARISING OUT OF THE SOFTWARE, ACCOMPANYING DOCUMENTATION OR THE USE THEREOF.

CANON, CANON'S AFFILIATE, THEIR DISTRIBUTOR OR DEALER SHALL HAVE NO OBLIGATION TO INDEMNIFY YOU AGAINST ANY CLAIM OR SUIT BROUGHT BY A THIRD PARTY ALLEGING THAT THE SOFTWARE, ACCOMPANYING DOCUMENTATION OR THE USE THEREOF INFRINGES ANY INTELLECTUAL PROPERTY OF SUCH THIRD PARTY.

THE ABOVE IS CANON'S ENTIRE LIABILITY AND YOUR EXCLUSIVE REMEDY IN CONNECTION WITH THE SOFTWARE AND ACCOMPANYING DOCUMENTATION.

**5. TERM:** This Agreement is effective upon opening the sealed disk package and remains in effect until terminated. You may terminate this Agreement by destroying the SOFTWARE and any copy thereof. This Agreement will also terminate if you fail to comply with any of the terms of this Agreement. In addition to Canon enforcing its respective legal rights, you must then promptly destroy the SOFTWARE and any copy thereof.

**6. U.S. GOVERNMENT RESTRICTED RIGHTS NOTICE:** The SOFTWARE is provided with RESTRICTED RIGHTS. Use, duplication or disclosure is subject to restrictions as set forth in either subparagraph (c) (1) (ii) of the Rights in Technical Data and Computer Software clause at DFARS 252.227-7013 or subparagraph (c) (1) and (2) of the Commercial Computer Software Restricted Rights Clause at FAR 52.227-19, as applicable.

**7. SEVERABILITY:** In the event that provision of this Agreement is declared or found to be illegal by any court or tribunal of competent jurisdiction, such provision shall be null and void with respect to the jurisdiction of that court or tribunal and all the remaining provisions of this Agreement shall remain in full force and effect.

**8. ACKNOWLEDGEMENT:** BY OPENING THE SEALED DISK PACKAGE, YOU ACKNOWLEDGE THAT YOU HAVE READ THIS AGREEMENT, UNDERSTOOD IT, AND AGREE TO BE BOUND BY ITS TERMS AND CONDITIONS. YOU ALSO AGREE THAT THIS AGREEMENT IS THE COMPLETE AND EXCLUSIVE STATEMENT OF AGREEMENT BETWEEN YOU AND CANON CONCERNING THE SUBJECT MATTER HEREOF AND SUPERSEDES ALL PROPOSALS OR PRIOR AGREEMENTS, VERBAL OR WRITTEN, AND ANY OTHER COMMUNICATIONS BETWEEN YOU AND CANON RELATING TO THE SUBJECT MATTER HEREOF. NO AMENDMENT TO THIS AGREEMENT SHALL BE EFFECTIVE UNLESS SIGNED BY A DULY AUTHORIZED REPRESENTATIVE OF CANON.

Should you have any questions concerning this Agreement, or if you desire to contact Canon for any reason, please write to Canon's local affiliate.

---

## INTRODUCTION

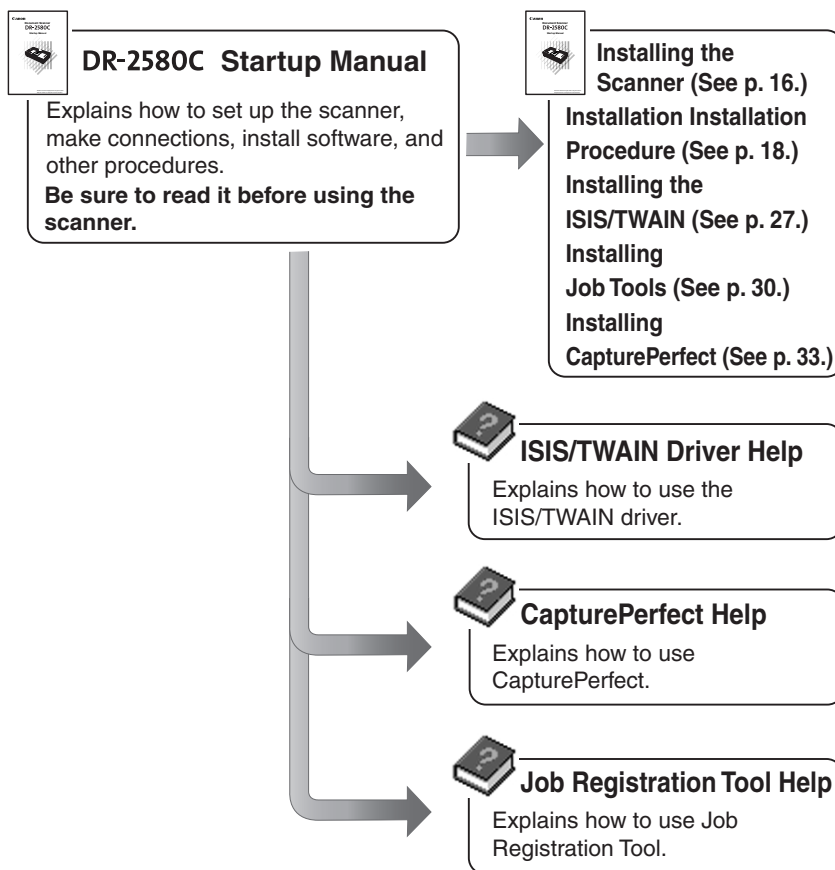
---

Thank you for purchasing the Canon DR-2580C scanner. Please read this manual thoroughly before using the machine to familiarize yourself with its capabilities, and to make the most of its many functions. After reading this manual, store it in a safe place for future reference.

---

### Manuals for the Scanner

The DR-2580C scanner has a Startup Manual (this manual) and online help. Please refer to the Startup Manual regarding the handling of the scanner, such as installation of software and setting up the scanner. The online help explains how to use the ISIS/TWAIN driver and the enclosed software, CapturePerfect.



---

## Conventions

This manual uses the following symbols and indications.

Before you start reading this manual, read the following and familiarize yourself with their meanings.



### **WARNING**

**Indicates a warning concerning operations that may lead to death or injury to persons if not performed correctly. In order to use the machine safely, always pay attention to these warnings.**



### **CAUTION**

**Indicates a caution concerning operations that may lead to injury to persons, or damage to property if not performed correctly. In order to use the machine safely, always pay attention to these cautions.**



### **IMPORTANT**

Indicates operational requirements and restrictions. Be sure to read these items carefully in order to operate the machine correctly, and to avoid damage to the machine.



### **Note**

Indicates a clarification of an operation, or contains additional explanations for a procedure. Reading these notes is highly recommended.

---

# Contents

---

<b>INTRODUCTION</b> .....	<b>2</b>
Manuals for the Scanner .....	2
Conventions .....	3
<b>Before Using the Scanner</b> .....	<b>5</b>
Safe Operation .....	5
Installation Location .....	5
About the AC adapter .....	6
Moving the Scanner .....	6
Normal Handling .....	7
Disposal .....	8
Features of the DR-2580C .....	9
Checking the Packing List .....	11
Removing the protective Packing Materials .....	12
Names and Functions of Parts .....	14
<b>Installing the Scanner</b> .....	<b>16</b>
Installation Requirements .....	16
Installing Procedure .....	18
Interface Cards .....	19
Connecting the Scanner to Your PC .....	20
Connecting the Power Cord .....	21
Turning the Power ON/OFF .....	22
Turning the Power ON .....	22
Recognizing the Scanner .....	23
Turning the Power OFF .....	25
<b>Installing the Software</b> .....	<b>26</b>
Installing the ISIS/TWAIN Driver .....	27
Installing Job Tools .....	30
Installing CapturePerfect .....	33
Uninstalling Software .....	36
<b>Using the Software</b> .....	<b>39</b>
Using the ISIS/TWAIN Driver .....	39
Using Job Tools .....	40
Starting Job Registration Tool .....	40
Using CapturePerfect .....	42
Starting CapturePerfect .....	42
<b>Using the Scanner</b> .....	<b>45</b>
Documents .....	45
Preparing for Scanner .....	47
Setting Up the Document Feed Tray .....	47
When documents are skewed .....	47
Document Eject Tray .....	49
Placing a Document for Scanning .....	52
How to Feed with the Page Separation Mode .....	52
How to Feed with the Bypass Mode .....	55
Clearing a Paper Jam .....	57
Other Functions .....	60
<b>Regular Maintenance</b> .....	<b>62</b>
Cleaning the Scanner .....	62
Cleaning inside the Scanner .....	62
Cleaning the Scanning Glass, Shading Boards and the Rollers .....	63
Removing and Attaching the Rollers .....	66
Roller Replacement Cycle .....	66
Resetting the Counter .....	67
Removing and Installing the Roller Unit .....	69
Removing and Attaching the Retard Roller .....	73
<b>Troubleshooting</b> .....	<b>77</b>
<b>Specifications</b> .....	<b>82</b>
<b>Index</b> .....	<b>86</b>

---

# Before Using the Scanner

---

## Safe Operation

In order to ensure safe operation, be certain to read the cautions described below.

---

## Installation Location

The performance of this scanner is affected by the environment in which it is installed. Make sure that the location where the scanner is installed meets the following environmental requirements:

- Provide adequate space around the scanner for operation and maintenance.
- Provide adequate space behind the scanner in order to eject scanned documents to the back of the scanner. (See “Document Eject Tray,” on p. 49.)
- Avoid locations exposed to direct sunlight. If the scanner must be placed in such a spot, hang a heavy curtain, or similar object to shade the scanner.
- Avoid dusty locations. Dust can get inside of the scanner and cause problems.
- Avoid warm or humid locations, such as in the vicinity of a water faucet, water heater, or humidifier, and avoid locations where the fumes from ammonia, paint thinner, or other volatile chemicals may be present.
- Avoid unstable surfaces and locations subject to vibration.
- Avoid locations that are subject to rapid temperature changes.

Condensation inside of the scanner can result in inferior image quality. Use this scanner under the following environmental conditions:

Temperature: 10°C to 32.5°C (50°F to 90.5°F)

Humidity: 20% to 80% RH

- Avoid locating the scanner near equipment that generates electromagnetic fields, including speakers, televisions, and radios.

---

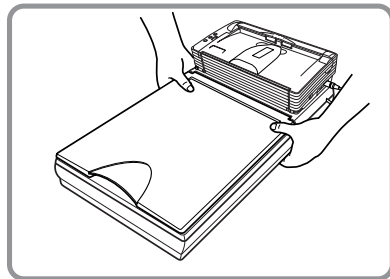
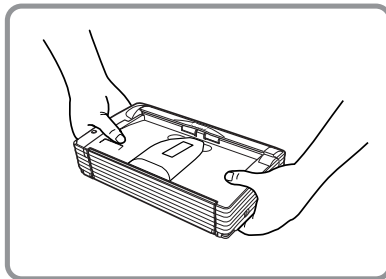
## About the AC adapter

- Connect only to a power outlet of the rated voltage and power supply frequency. (Either 120 V, 60 Hz or 220-240 V, 50/60 Hz depending on your region.)
- Do not connect to power outlets with other electrical devices. Also, when connecting via an extension cord, check the amperage rating.
- Disassembling and/or reassembling the AC adapter is extremely dangerous and should not be attempted under any circumstances.
- Do not place heavy objects on the AC adapter or power cord. Do not place the adapter or cords in an area where they are likely to be stepped on.
- Do not use the power cord while it is bundled.
- Never pull directly on the power cord. To remove the plug from the outlet, grasp the plug directly and remove.
- Keep the area around the power plug clear of articles so that the power plug can be disconnected in an emergency.
- Use only the AC adapter provided with the product. Also do not use the scanner's AC adapter with any other product.
  - 120 V Model: MH3-2053 or MG1-3607
  - 220-240 V Model: MH3-2054 or MG1-3607
- If unclear about the AC adapter, contact your local authorized dealers or service representative for further information.

---

## Moving the Scanner

- When moving the scanner, always hold it with both hands to avoid dropping it. The scanner weighs approximately 3.9 lb (1.8 kg) alone, and approximately 7.9 lb (3.6 kg) with the optional flatbed scanner unit installed.



With optional flatbed scanner unit installed

- Make sure that the flatbed scanner unit is correctly attached to the DR-2580C scanner before moving the scanner while the optional flatbed scanner unit is attached.
- Make sure to disconnect the interface cable and power cord. If the scanner is transported with these items plugged in, the plugs and connectors may be damaged due to physical shock or concussion.



---

## Normal Handling



### **WARNING**

**To avoid fire and electric shock, always observe the following warnings when using this scanner.**

- Do not place flammable chemicals, such as alcohol or paint thinner, near the scanner.
- Do not cut, damage, or modify the power cord. Do not place heavy objects on the power cord, do not pull on the power cord, and do not bend the power cord sharply.
- Do not plug in or unplug the power cord with wet hands.
- Do not use multioutlet adapters to connect multiple devices to one outlet.
- Do not tie up or bundle the power cord. Push the plug in as far as it will go when plugging in the power cord.
- Only use the power cord that was provided with this scanner.
- Do not attempt to disassemble or modify this scanner.
- Do not use flammable sprays near this scanner.
- Always turn the scanner OFF and unplug the power cord before cleaning this scanner.
- To clean this scanner, dampen a cloth in a mild detergent solution and then wring the cloth out thoroughly. Do not use flammable liquids to clean the scanner, including alcohol, benzene, or paint thinner.
- If the scanner ever makes a strange noise, emits smoke or a strange odor, becomes hot, or if the scanner does not operate at all even though the power is ON, immediately turn the scanner OFF and unplug the power cord. Contact your local authorized Canon dealer or service representative to have the scanner serviced.
- Do not drop, kick, or otherwise strike the scanner. If the scanner does somehow become damaged, immediately turn the scanner OFF and unplug the power cord. Contact your local authorized Canon dealer or service representative to have the scanner serviced.
- Always turn the scanner OFF and unplug the power cord before moving the scanner.
- Notice to Cardiac Pacemaker Users  
This product generates a low level magnetic field. If you use a cardiac pacemaker and feel abnormalities, please move away from the product and consult your doctor.

---

## CAUTION

- Do not set the scanner up on a wobbly platform, a sloped surface, or any other type of unstable location. Do not set up the scanner in a location that is subject to vibration. The scanner could injure someone if it falls or tips over.
- Do not block the ventilation openings. Doing so could cause the scanner to overheat, creating a risk of fire.
- Do not place paper clips, staples, necklaces, or any other metallic objects on top of the scanner. Liquids or small metallic objects that get inside of the scanner create a risk of fire or electrical shock. If such foreign matter does get inside of the scanner, unplug the power cord immediately, and then contact your local authorized Canon dealer or service representative for assistance.
- Do not set up the scanner in a dusty or humid location. Doing so creates a risk of fire or electrical shock.
- Do not place objects on top of the scanner. The object could injure someone if it falls or tips over.
- To prevent any risk of fire or electrical shock, be sure that the power source meets the power requirements of the scanner.
- When unplugging the power cord, always grasp the plug. Pulling on the cord itself could expose or break the wires in the power cord, damaging the cord and creating a risk of fire or electrical shock.
- In order to allow you to easily unplug the power cord at any time, do not place other objects around the power outlet. Such obstacles could prevent you from unplugging the power cord quickly in an emergency.
- Do not spill liquids or flammable chemicals (such as alcohol, paint thinner, or benzene) on the scanner. Doing so creates a risk of fire or electrical shock.
- If the scanner will not be used for an extended period of time, unplug the power cord for safety's sake.
- When operating this scanner, avoid wearing loosefitting clothing, dangling jewelry, or other material that could get pulled into the scanner. Injury could result. Be especially careful if you are wearing a necktie or have long hair. In the event that some article or clothing does get caught in the scanner, turn the power OFF immediately.
- Be careful when placing paper in the scanner and when removing jammed paper. It is possible to cut your hand on the edge of a sheet of paper.

---

## Disposal

- When disposing of this scanner, be sure to follow all local ordinances and laws or consult with the retailer who sold you the scanner.

---

## Features of the DR-2580C

The main features of the DR-2580C scanner are listed below.

### ■ **Fast Document Feeding**

The scanner can scan a maximum of 25 documents per minute in a range of sizes from business cards to LTR/A4 size. (Scanning conditions: Black & white/LTRA4 portrait/two sided/200 dpi)

### ■ **USB 2.0 Interface**

Connecting to a computer is done with Hi-Speed USB 2.0 protocol.

### ■ **Waiting Time is “0”**

The DR-2580C is ready to scan after the power is turned on without a waiting time.

### ■ **Color/Grayscale Support**

Documents can be scanned in 24-bit color or 256-level grayscale.

### ■ **Supports a Variety of Scanning Modes**

The scanner supports the following scanning modes, depending on the document type:

- Single-sided/double-sided mode
- Singlesheet/dual feeding path

### ■ **U-Turn Path**

Documents are fed and eject from the front of the scanner. (See p. 49.)

### ■ **Straight Path**

Documents are ejected to the back of the scanner. Note, the ejected documents are stacked in reverse order to how they were fed. (See p. 49.)

### ■ **Paper Size Detection**

The scanner automatically detects the size of a scanned document and eliminates any unnecessary space around the edges of the document when storing it, even when storing a document of irregular size.

### ■ **Card Scan**

It is possible to scan cards that comply with the ISO/JIS standard. (See p. 54.)

### ■ **Folio Scan**

A folio (folded in half) document can be set for scanning as it is and the scanned images of both sides are put together in a page. (See p. 61.)

### ■ **Deskew**

The Deskew function automatically straightens an image if the document was loaded askew.

### ■ **Character Orientation Detector**

Identifies the orientation of characters in a document, and rotates the image so the orientation of the scanned characters is straight.

### ■ **Advanced Text Enhancement**

The scanner is equipped with an Advanced Text Enhancement mode that allows you to clearly scan text printed on a dark background, and text that is written in faint pencil.

---

### ■ **Dropout Color**

The scanner is equipped with a Dropout Color function that allows you to specify a color for the scanner to omit from scanned images.

### ■ **Skip Blank Page Function**

The scanner is equipped with a Skip Blank Page function that allows it to scan a document regardless of whether every page is double-sided or single-sided.

### ■ **Prescan Function**

The scanner is equipped with a Prescan function that allows you to adjust the contrast and brightness of a prescanned image and then send the adjusted image to the application software, without needing to scan the document again.

### ■ **Remove Binder Holes**

Deletes black spots left when scanning documents that have had holes punched in them to be stored in a binder.

### ■ **Auto Start**

The scanner is equipped with an Auto Start function that automatically initiates scanning when a document is placed in the document feed port.

### ■ **Compatible with Carbonless Duplicating Paper**

The scanner is able to scan carbonless duplicating paper.

### ■ **Job Function**

Executing a scan with one of the scanner's Job buttons automatically performs the specified process (save, print, mail attachment). (See p. 60.)

### ■ **Flatbed Scanner Unit (Option)**

The Flatbed Scanner Unit can be attached to and used with the DR-2580C scanner. Contact your retailer for more detailed information. (See p. 61.)

### ■ **Power Saving Feature**

The scanner has a power saving feature that puts the scanner in low power mode after it has been idle for a certain period of time.



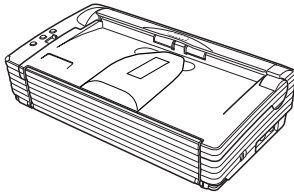
### **Note**

Some functions may not be available depending on the software you are using.

---

## Checking the Packing List

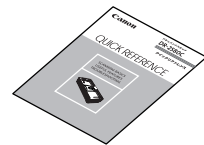
The contents of the carton in which this scanner is shipped are described below. If anything is missing or damaged, contact your local authorized Canon dealer or service representative.



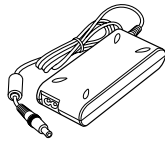
DR-2580C  
Scanner



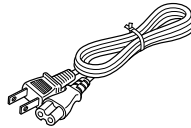
Startup Manual  
(This Manual)



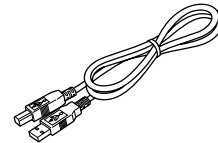
Quick Reference  
Guide



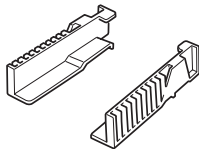
AC Adapter



Power Cord



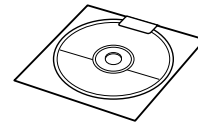
USB Interface  
Cable



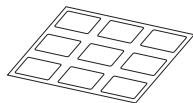
Document Guide  
Adapter



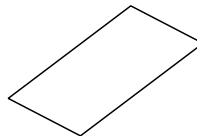
DR-2580C  
Setup Disc  
(CD-ROM)



Adobe Acrobat  
Setup Disc  
(CD-ROM)



Job Labels



Warranty Card  
(U.S.A. and  
Canada only)

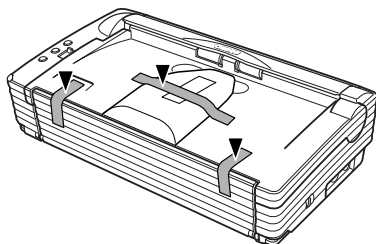
- The setup disc is in the startup manual.
- Items included in this package may change without notice.
- Keep the carton and the packing material for future use if it is ever necessary to store or transport the scanner.

---

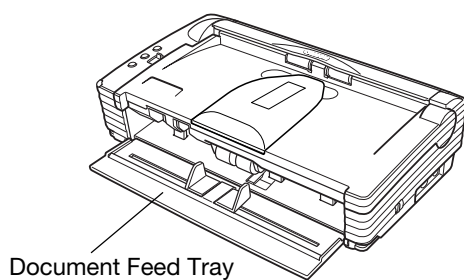
## Removing the Protective Packing Materials

Remove all of the protective packing materials before using the scanner.

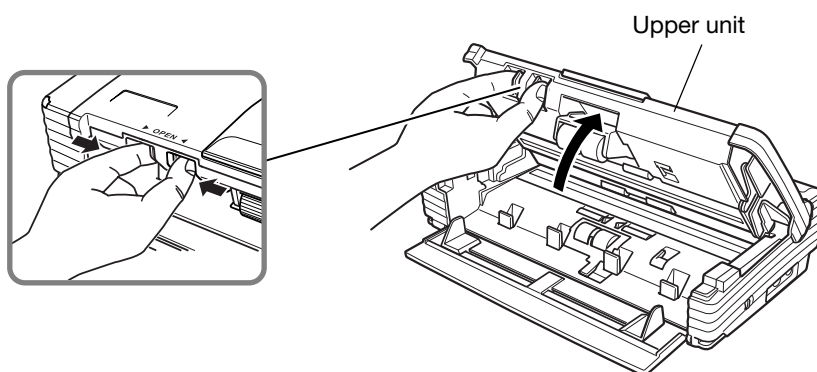
- 1 Remove the protective tape (indicated by the ▼ ) from the scanner.



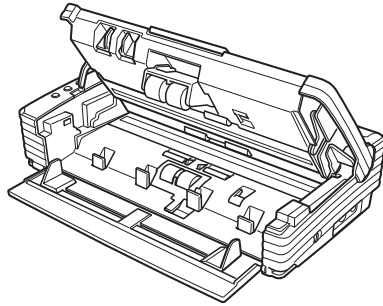
- 2 Open the Document Feed Tray and remove the packing materials.



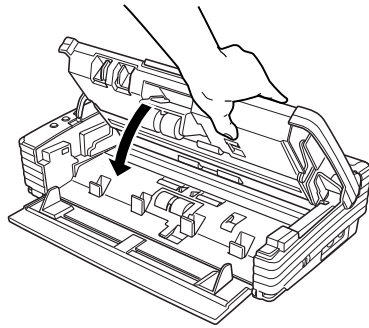
- 3 Pressing the OPEN knob from both sides, raise the upper unit.



- 
- 4** Remove all the protective materials.



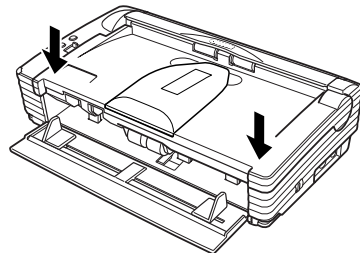
- 5** Close the Upper Unit slowly.



 **IMPORTANT**

Do not force the Upper Unit to close. Doing so can damage the scanner.

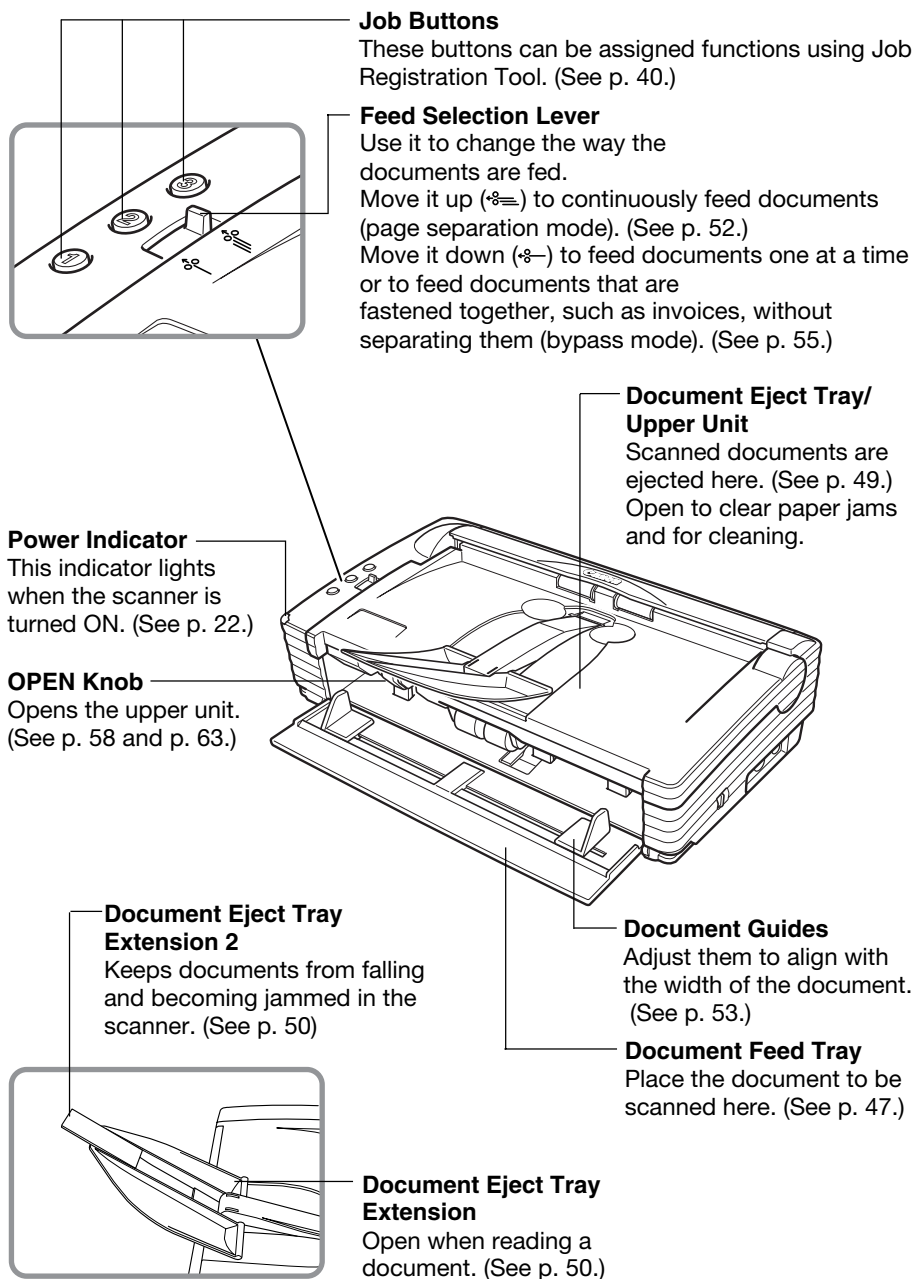
- 6** Be sure that the Upper Unit is completely closed by pushing on both edges with both hands until you hear a click.



## Names and Functions of Parts

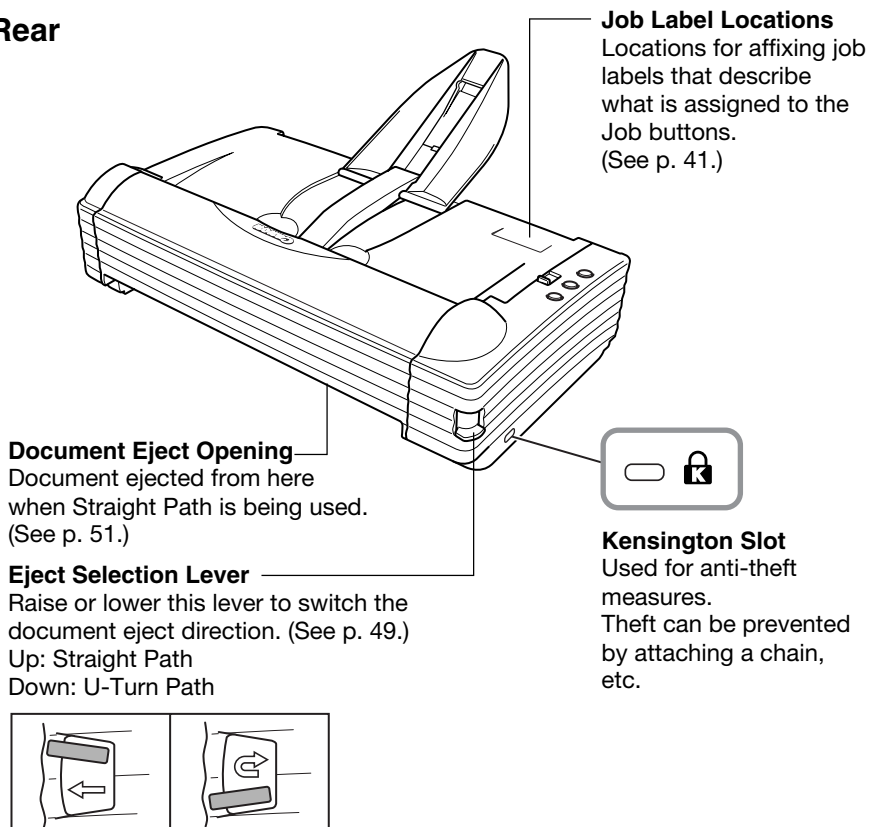
This section explains the name and function of each part. Familiarize yourself with the parts before connecting the scanner.

### ■ Front

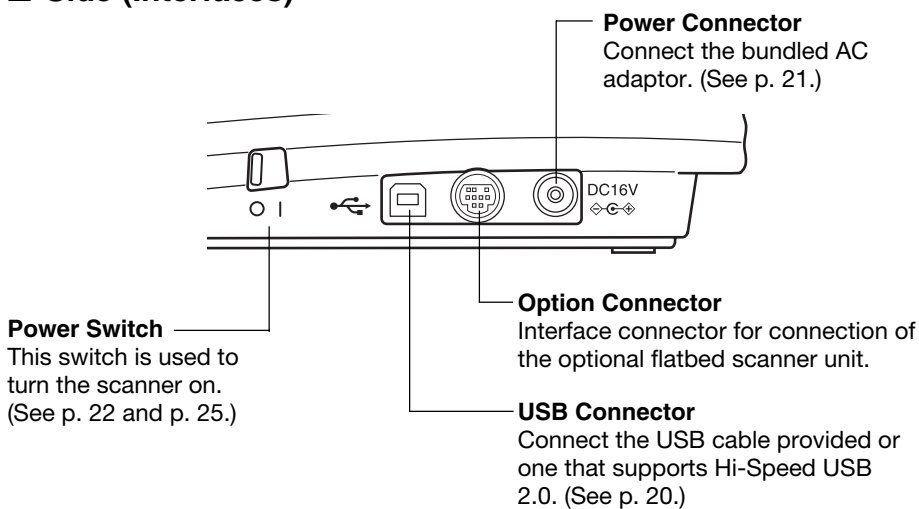




## ■ Rear



## ■ Side (Interfaces)



### Note

Do not touch the connectors' pins or contacts. Doing so may damage the scanner.

---

# Installing the Scanner

---

## Installation Requirements

In order to use the DR-2580C, your computer must satisfy the following system requirements:

- A computer that meets the following specifications:
  - CPU: Pentium 4 (1.5 GHz or higher)
  - Memory: 512 MB or more (1 GB or more recommended)
  - Hard disk: 1 GB or more available space
  - CD-ROM drive
  - Extension slot: PCI or CardBus (for interface cards)
  - Monitor: Resolution of 1024 x 768 (XGA) or better recommended
- USB 2.0 interface card that supports the scanner (See “Interface Board” on p.19.)
- One of the following operating systems:
  - Connecting via USB 2.0
  - Microsoft Windows 98 SE
  - Microsoft Windows Me
  - Microsoft Windows 2000 Professional SP3
  - Microsoft Windows XP Professional SP2
  - Microsoft Windows XP Home Edition SP2
- ISIS compatible or TWAIN compatible application software that runs on your operating system



### **IMPORTANT**

- Use the most recently available USB 2.0 driver when using the DR-2580C. Contact your local authorized Canon dealer or Service representative for more detailed information.
- If the CPU, memory, interface card, and other specifications do not satisfy those recommended, the scanning speed may be greatly reduced and transmission may take a long time.
- Even if the computer satisfies the recommended specifications, the scanning speed may be slow depending on the scan settings.

**Note**

- Make sure that enough virtual memory is set on your Windows system. Virtual memory settings vary according to the Windows system. For more information, refer to the Windows manual or the online help.
- Use the recommended interface card.
- The USB cable you are using should be the one originally bundled with the scanner or a Hi-Speed USB 2.0 compatible cable.
- Depending on the application software that you are using, the device driver provided may not operate, or you may not be able to use the functions described in this guide.
- Make sure that the device driver and application software that you will be using are compatible with your PC, the system configuration, and the type of interface card that you are using.
- The ISIS/TWAIN driver provided with the scanner is not necessarily compatible with all ISIS compatible or TWAIN compatible application software. For details, contact your local authorized Canon dealer or Service representative.

---

## Installation Procedure

The procedure for installing the scanner is outlined below. (For a detailed outline of this procedure, see “Connecting the Scanner to Your PC,” on p. 21.)

1. Check the interface card in your computer.  
(See “Interface cards,” on p. 19.)
2. Connect the power cord to the scanner.  
(See “Connecting the Power Cord,” on p. 21.)
3. Connect the scanner to the PC.  
(See “Connecting the Scanner to Your PC,” on p. 21.)
4. Turn ON the scanner.  
(See “Turning the Power ON,” on p. 22.)
5. Let the PC recognize the Scanner.  
(See “Recognizing the Scanner,” on p. 23.)
6. Turn the scanner OFF.  
(See “Turning the Power OFF,” on p. 25.)

---

## Interface Cards

When using the scanner with a USB connection, check to make sure the USB 2.0 interface card being used is a recommended type. Recommended USB 2.0 interface cards are listed below.

### Recommended USB 2.0 Interface Cards

(for PCI Bus)

Manufacturer: Adaptec  
Models: USB 2 connect 2000LP (AUA-2000)  
USB 2 connect 3100 (AUA-3100LP)  
USB 2 connect 5100 (AUA-5100)

(for Card Bus)

Manufacturer: Adaptec  
Models: USB 2 connect for Notebooks (AUA-1420)



### IMPORTANT

- Follow the instructions in your computer's and the USB 2.0 interface card's manuals to install the USB 2.0 interface card into your computer.
- Make sure that the USB driver is an updated version provided by Adaptec or Microsoft.



### Note

- The DR-2580C has passed the Hi-Speed USB 2.0 certification test. However, normal operations may not be possible on computers that are equipped with the standard Hi-Speed USB 2.0 interface card. In this case, use the recommended USB 2.0 interface card.
- If the USB 2.0 interface is not compatible with Hi-Speed USB 2.0, scanning speed is reduced.

---

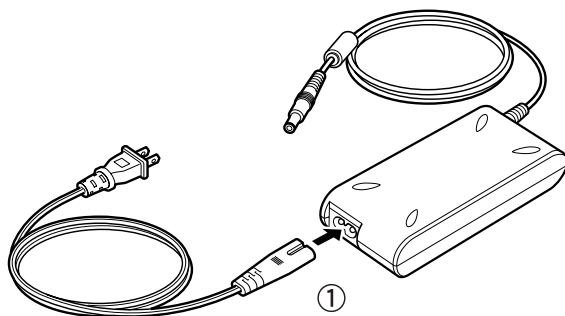
## Connecting the Power Cord

Perform the following steps to connect the power cord.

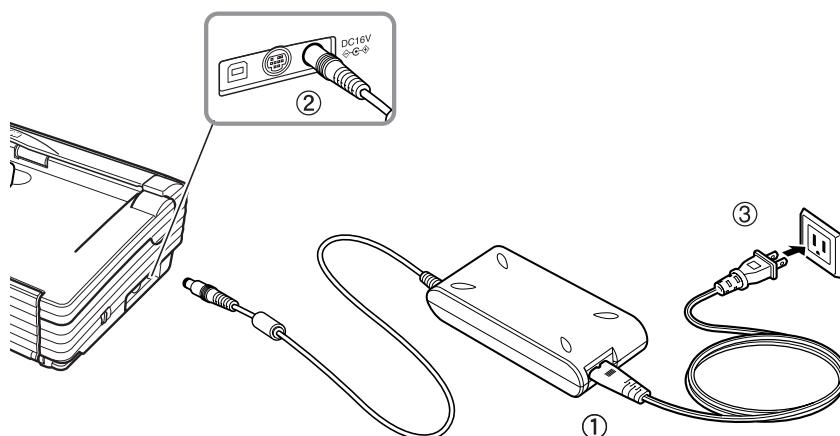
### **!** WARNING

- Be sure to use the power cord and AC adaptor provided with the scanner.
- Make sure the scanner is turned off when performing this operation.

**1** Connect the bundled power cord ① to the AC adaptor.



**2** Plug the AC adaptor power cord into the power connector ② on the right side of the scanner, and plug the power plug into a power outlet ③.



---

## Connecting the Scanner to Your PC

Connecting the scanner to a computer using a USB connection.

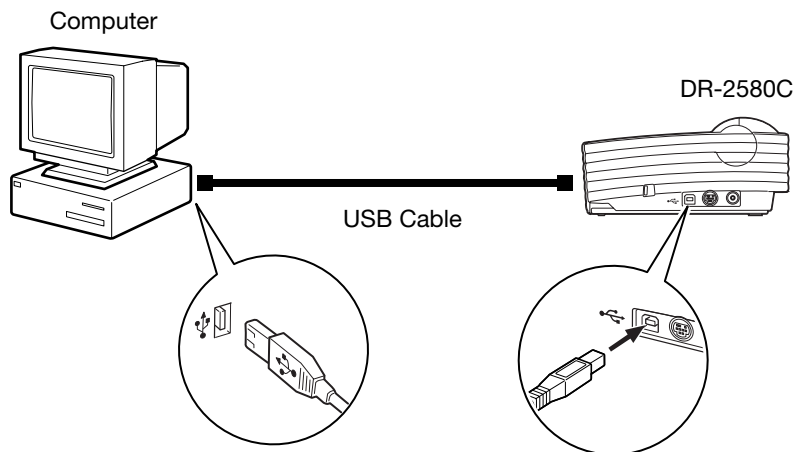


### IMPORTANT

- When the application is running, do not turn the scanner OFF or unplug the interface cable.
- Do not connect multiple DR-2580C scanners to one (1) computer.

#### USB Interface Connection

- Be sure to use the USB cable bundled with the scanner or a Hi-Speed USB 2.0 compatible cable.
- When using a USB extension card that supports Hi-Speed USB 2.0, be sure to choose one verified for use with the scanner. (See p. 19.)



### IMPORTANT

When using a USB hub, be sure to use one compatible with USB 2.0.



### Note

- The DR-2580C passed the Hi-Speed USB 2.0 certification test. However, when you use the scanner with a personal computer equipped with USB 2.0 as standard, the scanner may not always operate normally.
- If the interface is not Hi-Speed USB 2.0 compatible, the scanning speed will slow down.

---

## Turning the Power ON/OFF

Follow the procedures described below when turning the power ON or OFF.

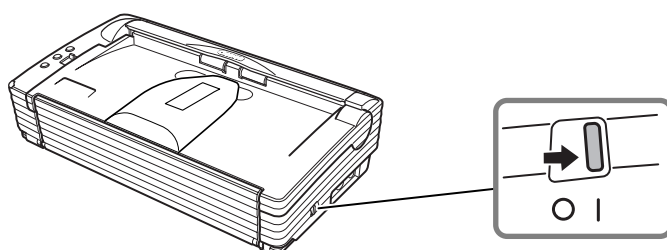
---

### Turning the Power On

- 1 Turn ON the scanner.

The power switch is on the right side of the scanner.

Push the power switch to turn ON the scanner. The power lamp lights green when the power is ON.



- 2 Turn ON the PC.

#### WARNING

**If the scanner ever makes a strange noise, emits smoke or a strange odor, becomes hot, or if the scanner does not operate at all even though the power is ON, immediately turn the scanner OFF and unplug the power cord. Contact your local authorized Canon dealer or service representative to have the scanner serviced.**

- 3 Log on to Windows.

#### IMPORTANT

If you are using Windows 2000 Professional, or Windows XP, be sure to log on as a user with administrator privileges.



---

## Recognizing the Scanner

When the computer recognizes the scanner, Windows Plug And Play displays the scanner driver's installation screen. Follow the instructions that appear on the screen to install the driver.

- If you are using Windows 98SE, the [Add New Hardware Wizard] dialog box appears.
  1. Click the [Next] button.
  2. Select [Search for the best driver for your device. (Recommended)], and then click the [Next] button.
  3. Insert the setup disc into the computer's CD-ROM drive.
  4. Select [Specify a location], enter "D:\INF" (assuming that "D" is the letter assigned to your CD-ROM drive), and then click the [Next] button.
  5. Click the [Next] button.
  6. Click the [Finish] button.
- If you are using Windows Me, the [Add New Hardware Wizard] dialog box appears.
  1. Select [Specify the location of the driver (Advanced)], and then click the Next button.
  2. Insert the setup disc into the computer's CD-ROM drive.
  3. Select [Search for the best driver for your device. (Recommended)], and then select [Specify a location]. Enter "D:\INF" (assuming that "D" is the letter assigned to your CD-ROM drive), and then click the [Next] button.
  4. Click the [Next] button.
  5. Click the [Finish] button.
- If you are using Windows 2000 Professional, the [Found New Hardware Wizard] dialog box appears.
  1. Click the [Next] button to proceed to the Install Hardware Device Drivers screen.
  2. Select [Search] for a suitable driver for my device (recommended), and then click the [Next] button to proceed to the Locate Driver Files screen.
  3. Select [Specify a location] and then click the [Next] button.
  4. Insert the setup disc into the computer's CD-ROM drive.
  5. Enter "D:\INF" (assuming that "D" is the letter assigned to your CD-ROM drive), and then click the [OK] button.
  6. On the Driver Files Search Results screen, click the [Next] button.
  7. If the message "Digital Signature Not Found" appears, click [Yes] to continue installation.
  8. On the Completing the Found New Hardware Wizard screen, click the [Finish] button.

- 
- If you are using Windows XP, the [Found New Hardware Wizard] dialog box appears.
    1. Insert the setup disc into the computer's CD-ROM drive.
    2. On the Welcome to the Found New Hardware Wizard screen, select [Install from a list or specific location (Advanced)], and then click the [Next] button.
    3. Select [Search for the best driver in these locations], and then clear the [Search removable media (floppy, CD-ROM...)] check box. Select [Include this location in the search], enter "D:\INF" (assuming that "D" is the letter assigned to your CD-ROM drive), and then click the [Next] button.
    4. Although a message appears indicating that the driver "has not passed Windows logo testing", click the [Continue Anyway] button in the [Hardware Installation] dialog box.
    5. Click the [Finish] button on the Completing the Found New Hardware Wizard screen.

**Note**

The DR-2580C is registered as "CANON DR-2580C USB" in the Imaging Device directory.

**IMPORTANT**

The job function (see Scanning with "Job Function" on p. 60.) will no longer be available if scanner recognition is cancelled part way through. Be sure to perform the scanner recognition procedure all the way to the end.

---

## Turning the Power OFF

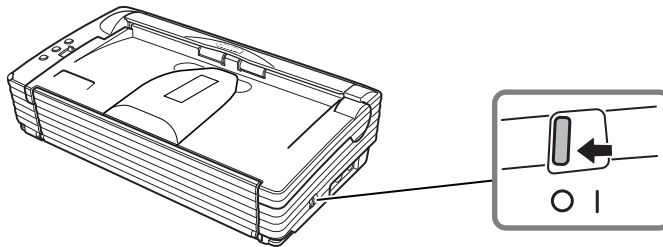
---

### **⚠ CAUTION**

**If the scanner will not be used for an extended period of time, unplug the power cord for safety's sake.**

- 1** Exit the application.
- 2** Turn OFF the scanner.

The power switch is located on the lower right front corner of the scanner. To turn the scanner OFF, press the power switch. When the power indicator turns OFF, the scanner is OFF.



### **📄 Note**

- Make sure you exit the application before turning OFF the scanner. Turning OFF the scanner before exiting the application can cause unstable operation of the computer.
- Wait at least 10 seconds before turning the scanner back ON after it has been turned OFF.

### **⚠ WARNING**

**If the scanner ever makes a strange noise, emits smoke or a strange odor, or becomes hot, or if the scanner does not operate at all even though the power is ON, immediately turn the scanner OFF and unplug the power cord. Contact your local authorized Canon dealer or service representative to have the scanner serviced.**

---

## Installing the Software

---



### **IMPORTANT**

The DR-2580C setup disc contains the software listed below. Be sure to read the contents of the “Readme.txt” file before installing software.

- **ISIS/TWAIN Driver**

This driver allows this scanner to be used with ISIS compatible application software or TWAIN compatible application software. The driver must be installed to be able to use the scanner.

- **Job Tools**

Job Tools installs Job Registration Tool for assigning functions to the scanner's Job buttons, and Job Run Tool for executing a scan using a Job button. Job Tools is TWAIN compatible application software. You need to install the ISIS/TWAIN Driver before installing Job Tools.

- **CapturePerfect**

CapturePerfect is software for scanning images that is ISIS compatible. You need to install the ISIS/TWAIN driver before installing CapturePerfect.

For information about installing the bundled Adobe Acrobat 6.0 Standard, see the “How To Install” file on the Adobe Acrobat setup disc.

---

## Installing the ISIS/TWAIN Driver

Follow the procedure described below to install the ISIS/TWAIN driver.

### **IMPORTANT**

If another ISIS compatible driver is already installed in your PC, you must back up the files listed below. These files may be overwritten when you install this ISIS/TWAIN driver.

C:\Windows\System\pix\*.dll

C:\Windows\PixTran\\*.\*

### **Note**

The name of the “\Windows” and “\Windows\System” folder varies, depending on which version of Windows you are using. Substitute the above folder names with the relevant folder names for Windows used in your system.

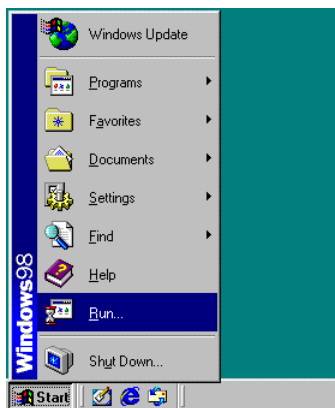
**1** Turn ON your PC. Windows starts.

### **IMPORTANT**

If you are using Windows 2000 Professional, or Windows XP, be sure to log on as a user with administrator privileges.

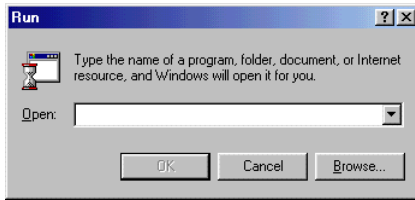
**2** Insert the setup disc in the PC’s CD-ROM drive.

**3** Clic the [Start] button, and then select [Run].



The [Run] dialog box appears.

- 4 In the Open box, enter “D:\Driver\Setup.exe” (assuming that “D” is the letter assigned to your CD-ROM drive), and then click the [OK] button.

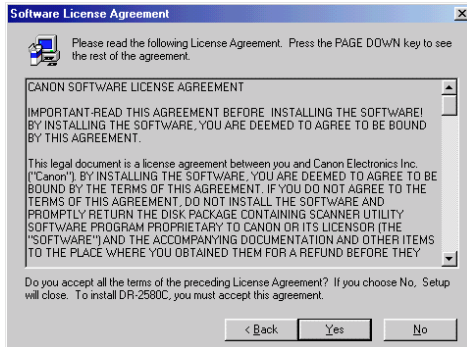


The installer starts.

- 5 Follow the instructions that appear on the screen to install the software.
1. Read the “Welcome” text, and then click [Next].



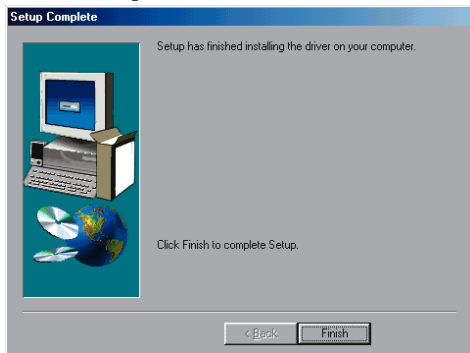
2. Read the “License Agreement” text, and then click [Yes].



3. This starts the installer.



4. This completes installation.

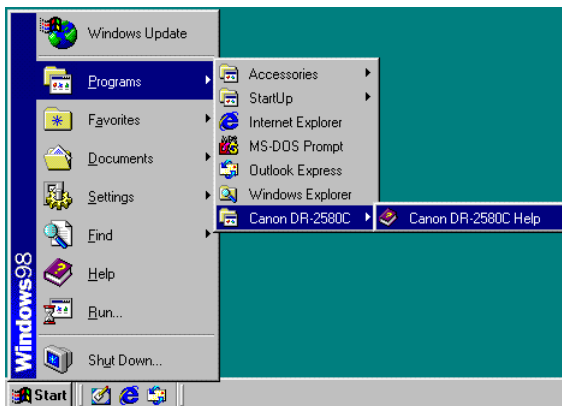


**6** After installation is complete, click the [Finish] button to exit the installer.



#### Note

Installing the ISIS/TWAIN driver will put a “Canon DR-2580C Help” icon on your Windows Start menu.



#### Canon DR-2580C Help

Online help for ISIS/TWAIN driver. (See “Using the ISIS/TWAIN Driver” on p. 39.)

---

## Installing Job Tools

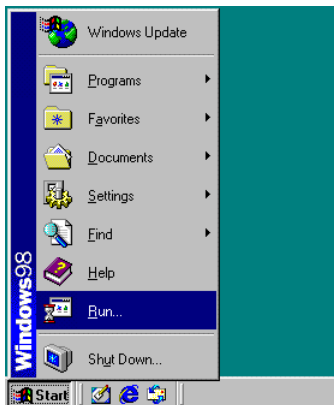
Job Tools is TWAIN compatible application software. You need to install the ISIS/TWAIN driver before installing Job Tools. Follow the procedure below to install Job Tools.

- 1 Turn ON your PC. Windows starts.

### IMPORTANT

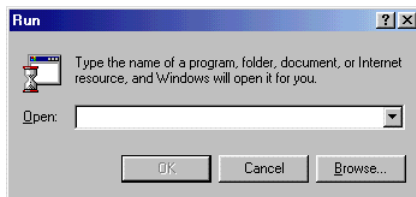
If you are using Windows 2000 Professional, or Windows XP, be sure to log on as a user with administrator privileges.

- 2 Insert the setup disc in the PC's CD-ROM drive.
- 3 Clic the [Start] button, and then select [Run].



The [Run] dialog box appears.

- 4 In the Open box, enter “D:\Job Tool\Setup.exe” (assuming that “D” is the letter assigned to your CD-ROM drive), and then click the [OK] button.

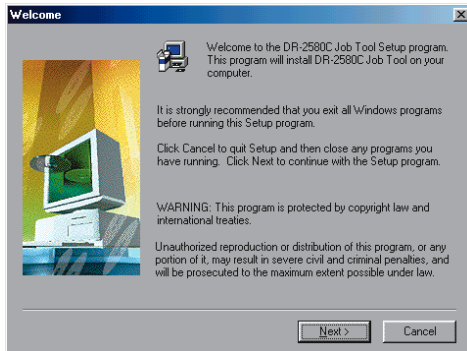


The installer starts.

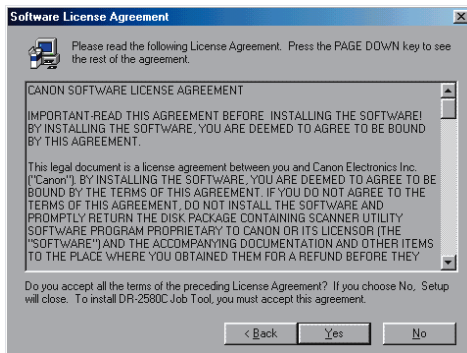


## 5 Follow the instructions that appear on the screen to install the software.

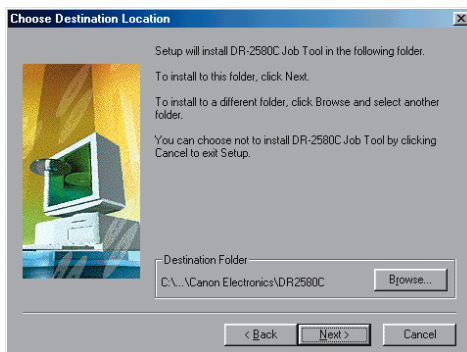
### 1. Read the “Welcome” text, and then click [Next].



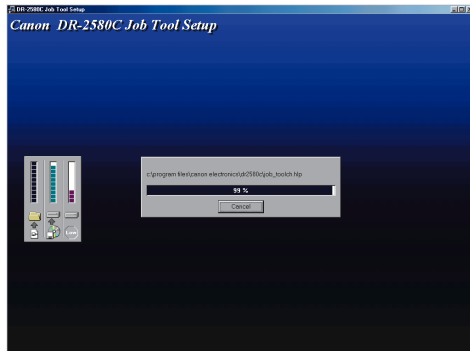
### 2. Read the “License Agreement” text, and then click [Yes].



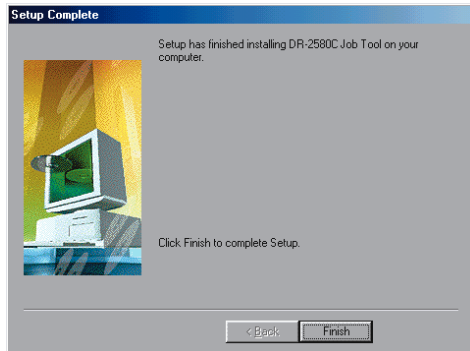
### 3. Read the “Choose Destination Location” text, and then click [Next].



4. This starts the installer.



5. This completes installation.

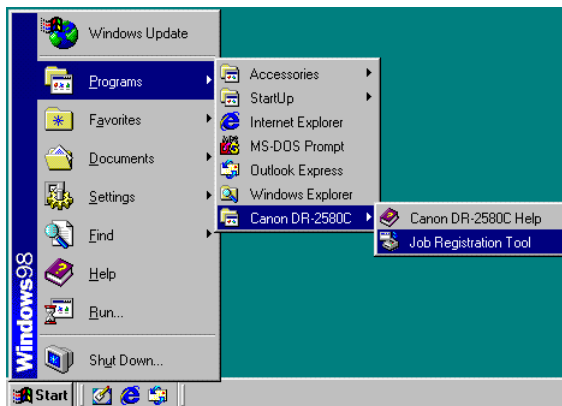


6 After installation is complete, click the [Finish] button to exit the installer.



**Note**

Installing Job Tool will put a “Job Registration Tool” icon on your Windows Start menu. (See “Using Job Tools” on p. 47.)



---

## Installing CapturePerfect

CapturePerfect is ISIS compatible application software.

You need to install the ISIS/TWAIN driver before installing CapturePerfect.

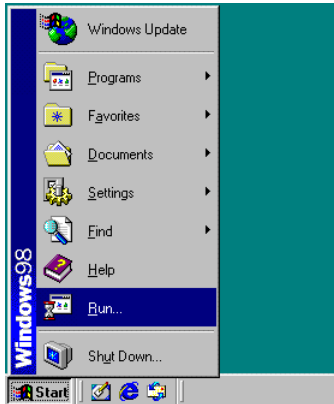
Follow the procedure below to install CompturePerfect.

- 1 Turn ON your PC. Windows starts.

### IMPORTANT

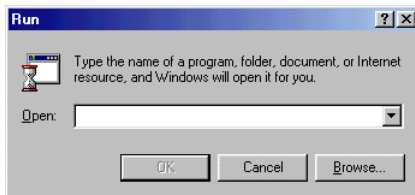
If you are using Windows 2000 Professional, or Windows XP, be sure to log on as a user with administrator privileges.

- 2 Insert the setup disc in the PC's CD-ROM drive.
- 3 Click the [Start] button, and then select [Run].



The [Run] dialog box appears.

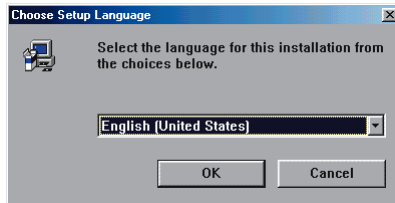
- 4 In the Open box, enter “D:\CapturePerfect\Setup.exe” (assuming that “D” is the letter assigned to your CD-ROM drive), and then click the [OK] button.



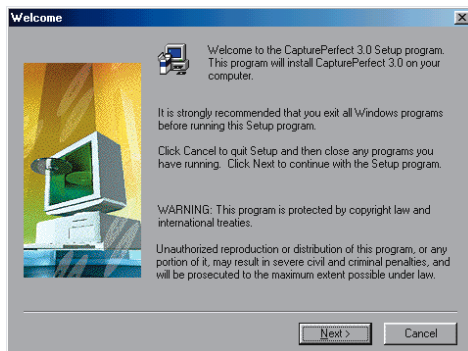
The Installer starts.

**5** Follow the instructions on the screen and complete the installation process.

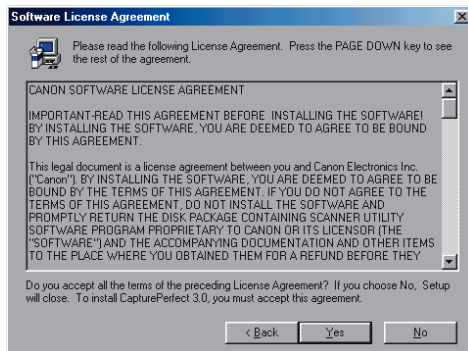
1. Select the installation language (Japanese or English).



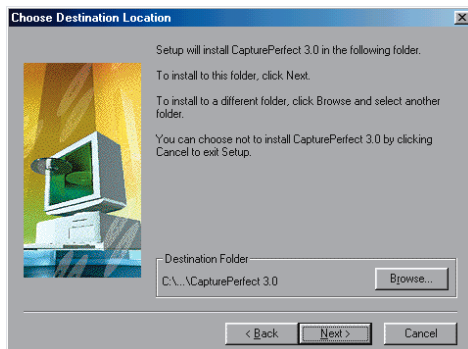
2. Read the “Welcome” text, and then click [Next].



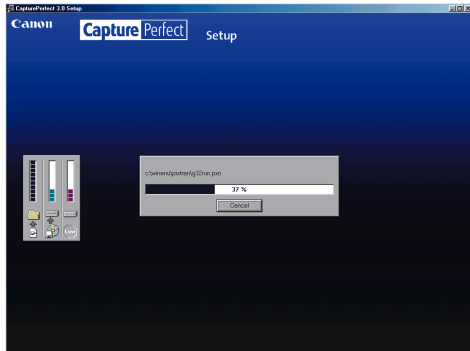
3. Read the “License Agreement” text, and then click [Yes].



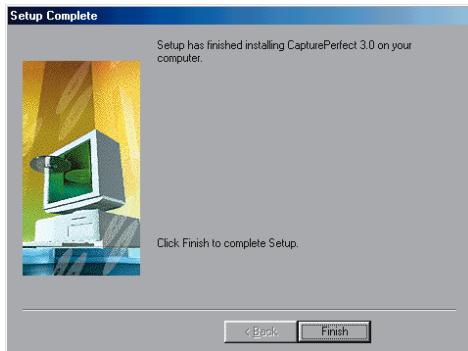
4. Read the “Choose Destination Location” text, and then click [Next].



5. This starts the installer.



6. This completes installation.

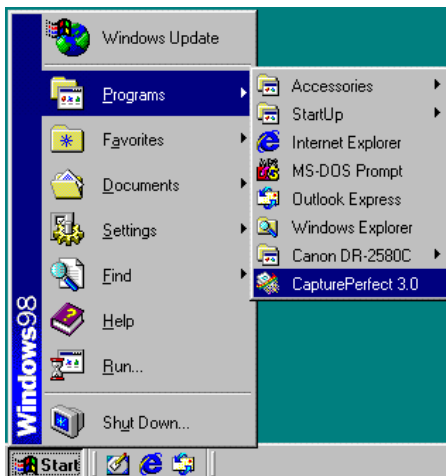


**6** After installation is complete, click the [Finish] button to exit the installer.



**Note**

Installing CapturePerfect will put a “CapturePerfect” icon on your Windows Start Menu. (See “Using CapturePerfect” on p. 42.)



---

## Uninstalling Software

Follow the procedure described below to uninstall the ISIS/TWAIN driver, Job Tools, and CapturePerfect.

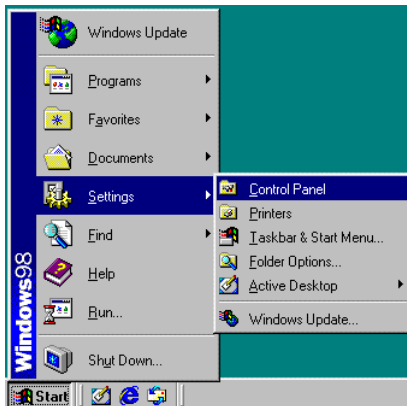
### **IMPORTANT**

If you are using Windows 2000 Professional, or Windows XP, be sure to log on as a user with administrator privileges.

- 1 Click the [Start] button, point to [Settings], and then click [Control Panel].

### **Note**

If you are using Windows XP, on the Start menu, click [Control Panel].

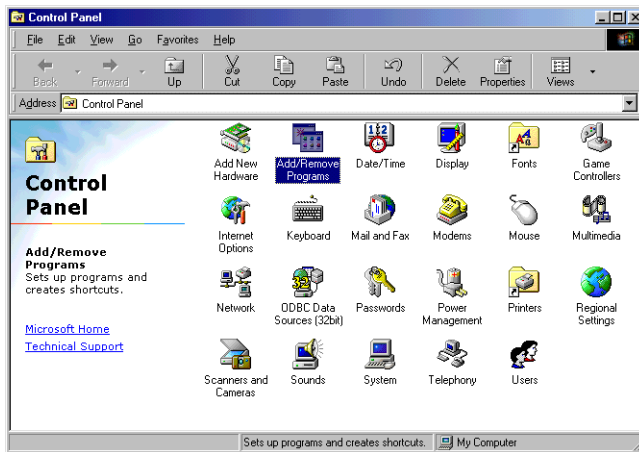


The [Control Panel] window is displayed.

- 2 Double-click the [Add/Remove Programs] icon.

### **Note**

If you are using Windows XP, click the [Add or Remove Programs] icon.



The [Add/Remove Programs Properties] dialog box is displayed.

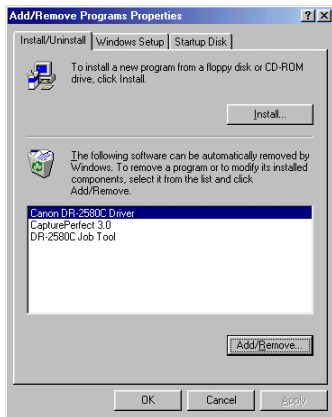
 **Note**

If you are using Windows XP, the [Add or Remove Programs] dialog box is displayed.

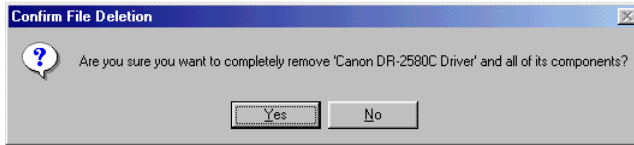
- 3 On the list in the dialog box, select the application you want to delete, and then click [Add/Remove].

 **Note**

If you are using Windows XP, click the [Change/Remove] button.



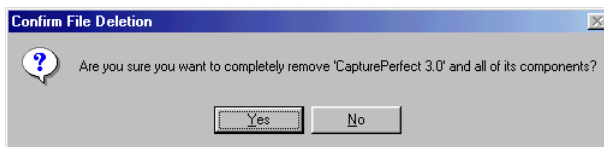
**4** The [File Deletion] dialog box appears.



When [Canon DR-2580C Driver] is selected.

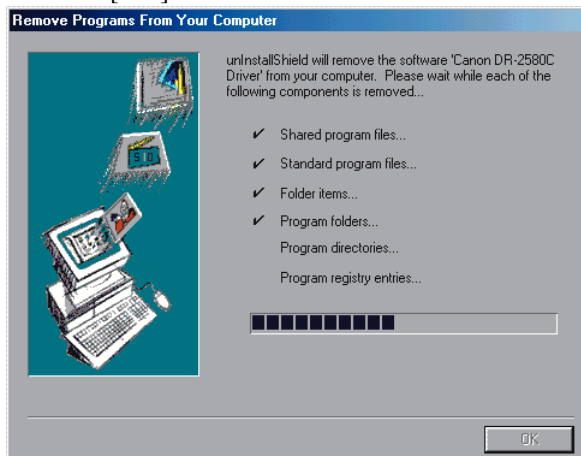


When [Canon DR-2580C Job Tool] is selected



When [CapturePerfect] is selected

**5** Click the [Yes] button to start the uninstaller.



**6** After uninstall is complete, click the [OK] button to exit the uninstaller.



---

## Using the Software

---

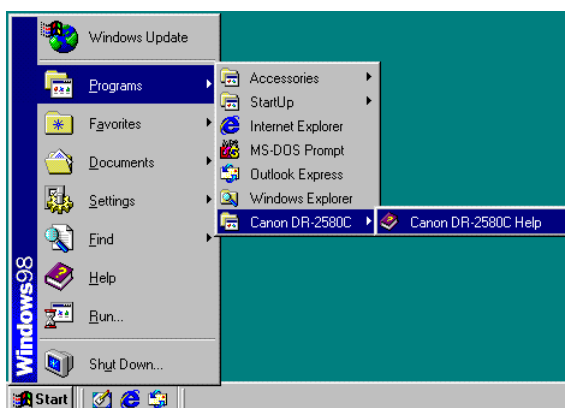


### Note

- This section provides only the basic procedures for using installed software. Software applications also have their own help. See the applicable help for details about using each software application.
- For information about the bundled Adobe Acrobat, see Adobe Acrobat help.

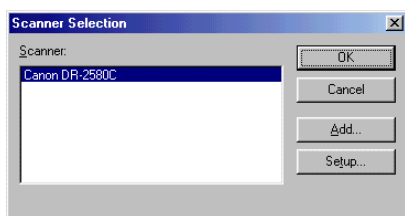
## Using the ISIS/TWAIN Driver

The ISIS/TWAIN driver help describes how to use the ISIS/TWAIN driver. To access ISIS/TWAIN driver help, click the [Start] button, point to [Programs] (when using Windows XP, point to [All Programs]) - Canon DR-2580C, and then click [Canon DR-2580C Help], or click the [Help] button displayed in the dialog box.



### Note

Before using the ISIS/TWAIN Driver, select the scanner [Canon DR-2580C] with the software. For more information, refer to [Canon DR-2580C Help] and the manual for the software you are using.



---

## Using Job Tools

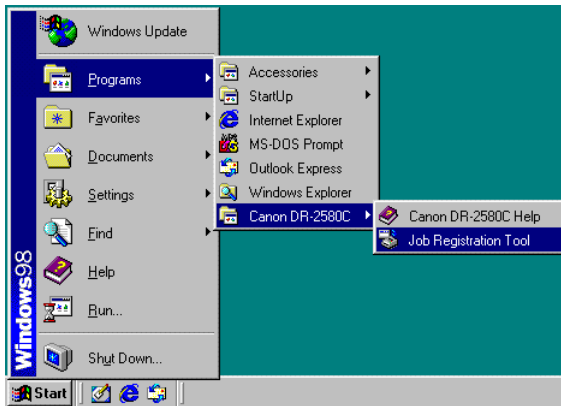
This section explains how to start up Job Registration Tool. Details about configuring Job Registration Tool settings can be found in Job Registration Tool help.

To view information about settings, click the [Help] button on the Job Registration Tool main screen.

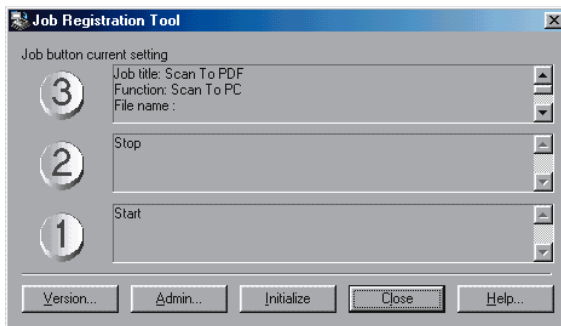
---

### Starting Job Registration Tool

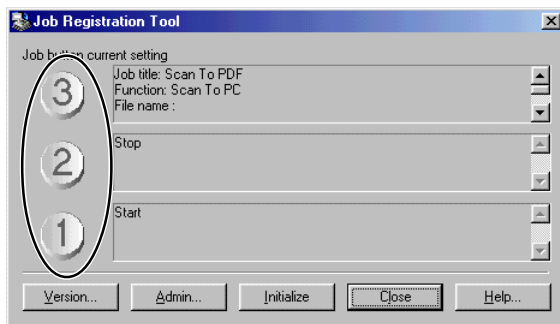
- 1** Turn ON the scanner.
- 2** Turn ON your computer. Windows starts.
- 3** Click the [Start] button, point to [Programs] (when using Windows XP, point to [All Programs]) - Canon DR-2580C and then click [Job Registration Tool].



Job Registration Tool starts.



**4** Press a Job button, and then configure Job Registration Tool settings.



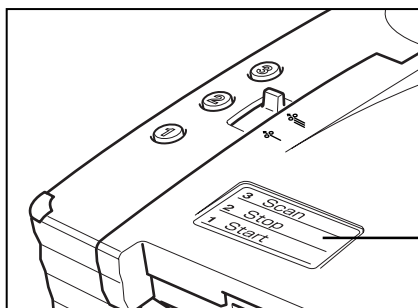
 **Note**

For details about configuring Job Registration Tool settings, click the [Help] button.

**5** After configuring settings, click the [Close] button to exit Job Registration Tool.

 **Note**

Fill in the Job Registration Tool settings on the included job label, and affix the job label to the scanner.

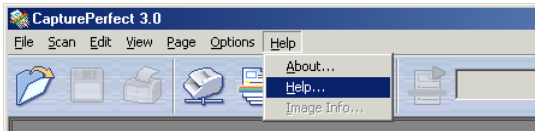


Job Label

---

## Using CapturePerfect

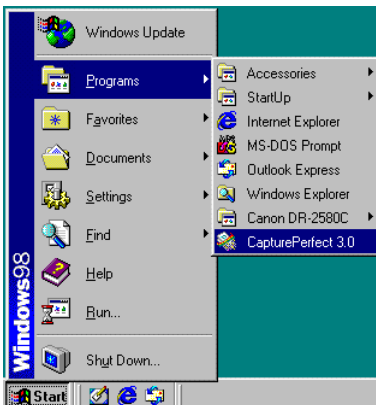
This section explains the basic procedures to startup and exit CapturePerfect. Details about actually using CapturePerfect can be found in CapturePerfect help. To view information about using CapturePerfect, click [Help] on the CapturePerfect menu bar.



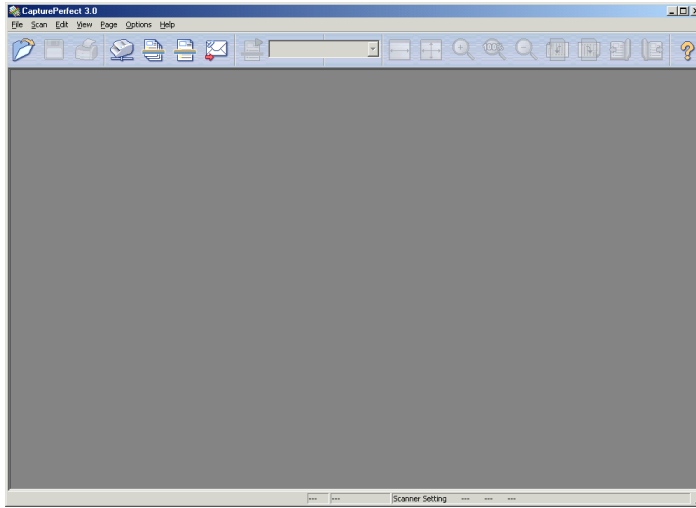
---

## Starting CapturePerfect

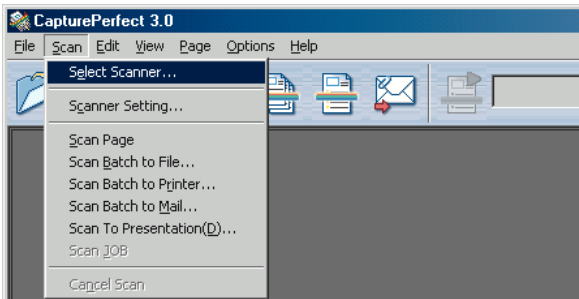
- 1 Turn ON the scanner.
- 2 Turn ON your computer. Windows starts.
- 3 Click the [Start] button, point to [Programs] (when using Windows XP, point to All Programs), and then click [CapturePerfect].



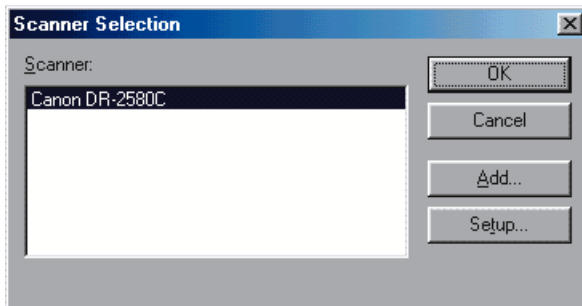
CapturePerfect starts.



4 On the Scan menu, click [Select Scanner].



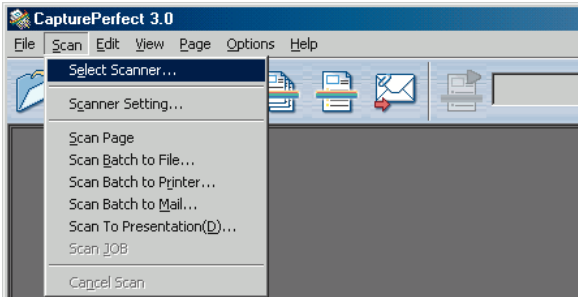
5 Select [Canon DR-2580C], and then click the [OK] button.



**Note**

If [Canon DR-2580C] is not displayed in the list of scanners, re-install the ISIS/TWAIN driver. (See “Installing the ISIS/TWAIN Driver” on p. 27. )

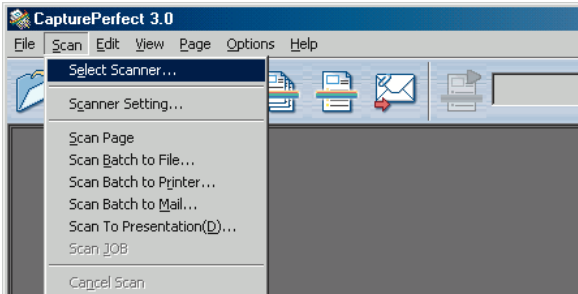
- 6** On the Scan menu, click [Select Scanner] and then configure scanning parameters.



 **Note**

For details about how to configure scanning parameters, see ISIS/TWAIN driver help. (See p. 39.)

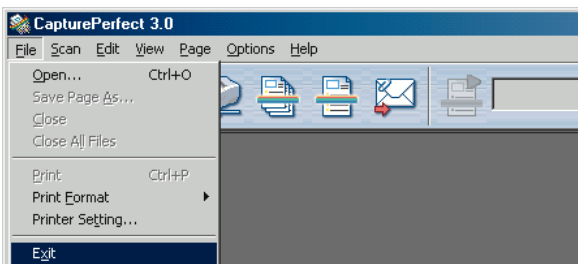
- 7** Execute the scan operation from the [Scan] menu.



 **Note**

Details about actually using CapturePerfect can be found in CapturePerfect help. To view information about using CapturePerfect, click [Help] on the menu bar.

- 8** After scanning is complete, select [Exit] on the [File] menu to quit CapturePerfect.



---

# Using the Scanner

---

## Documents

This scanner can scan documents ranging in size from business cards and checks to LTR/A4 size documents. The size of documents that can be scanned is shown below.

Eject Direction (*1)	U-Turn Path	Straight Path
Width	2.08" to 8.5" (53mm to 216mm)	2.08" to 8.5" (53mm to 216mm)
Length	2.75" to 13.9" (70mm to 355.5mm)	2.75" to 13.9" (70mm to 355.5mm)
Weight (*2) Feeding documents are separated	14 to 32 lb bond (52 to 128g/m <sup>2</sup> ) 0.0023" to 0.0059" (0.06mm to 0.15mm)	11 to 40 lb bond (42 to 157g/m <sup>2</sup> ) 0.0019" to 0.0078" (0.05mm to 0.20mm)
Feeding documents are not separated	11 to 40 lb bond (42 to 157g/m <sup>2</sup> ) 0.0019" to 0.0078" (0.05mm to 0.20mm)	11 to 40 lb bond (42 to 157g/m <sup>2</sup> ) 0.0019" to 0.0078" (0.05mm to 0.20mm)
ISO/JIS Standard Cards	Cannot be scanned	Can be scanned (not separated) Size: 2.12" x 3.36" (53.9mm x 85.5mm) Thickness:0.033" (0.84mm) or less without embossing

(\*1) For information about eject directions, see "Document Eject Tray," on p. 49.

(\*2) If the document is longer than 11.7" (297 mm), use Bypass mode with Feed Selection Lever (See p. 55.) document scanning.

(\*3) For information about feeding document see "Loading a Documents for Scanning," on p. 52.



### IMPORTANT

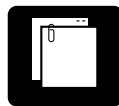
A document must meet the following criteria be scannable:

- When scanning a multi-page document, pages must be grouped together so that they have the same size, thickness, and weight. Scanning different types of paper at one time can cause the scanner to jam.

- When using the U-Turn Path to scan a document that is longer than 11.7" (297 mm), use Bypass mode and feed pages one at a time. Attempting to use the U-Turn Path for continuous feed scanning of a document that is longer than 11.7" (297 mm) can cause document pages to fall onto the feed tray and become jammed in the scanner.
- Scanning documents before the ink is dry can cause problems with the scanner. Always make sure that the ink on a document is dry before scanning it.
- Scanning documents that are written in pencil or similar material can make the rollers dirty, which can then transfer the dirt to subsequent documents. Always clean the rollers after scanning a document written in pencil.
- When scanning a two-sided document that is printed on thin paper, the image on the opposite side of each page may show through. Adjust the scanning intensity in the application software before scanning the document.
- Scanning the following types of documents can cause a paper jam or malfunction. To scan such a document, make a photocopy of the document and then scan the photocopy.



Wrinkled or creased documents



Carbon paper



Curled documents



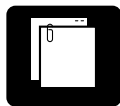
Coated paper



Torn documents



Extremely thin, translucent paper



Documents with paper clips or staples

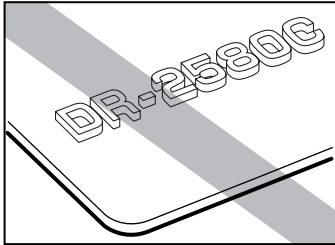
- When scanning ISO/JIS Standard Cards, make sure to select nonseparation feed and Straight Path.



---

**⚠ CAUTION**

The results of scanning embossed cards are not guaranteed. Note that scanning embossed cards may scratch the scanning glass.



Embossed Card

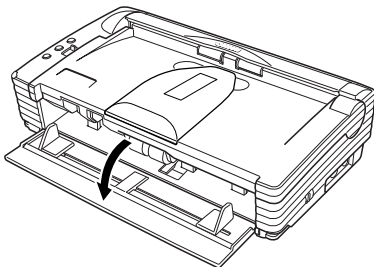
## Preparing Tray

Prepare the Document Feed Tray and Document Eject Tray according to the paper size and feed /eject method.

---

## Setting Up the Document Feed Tray

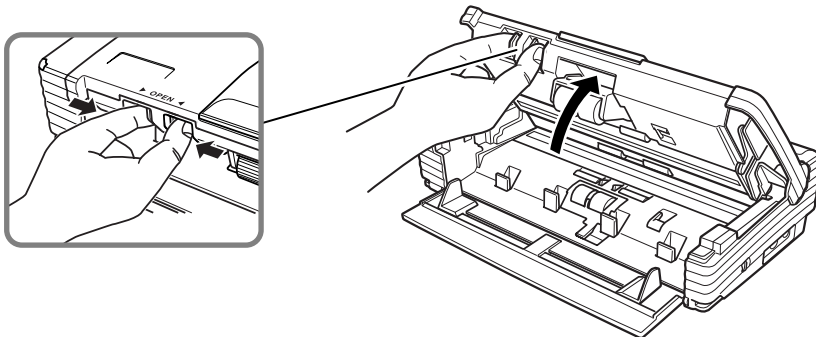
Pull the Document Feed Tray towards you to open it.



### When documents are skewed

If fed documents are skewed, follow the procedure described below to install the Document Guide Adapter.

- 1** Pressing the OPEN Knob from both sides, raise the Upper Unit.

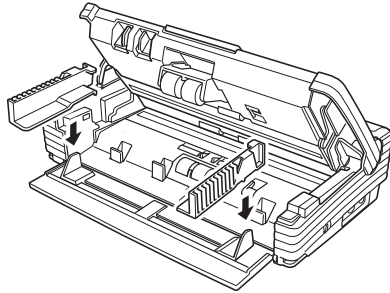


---

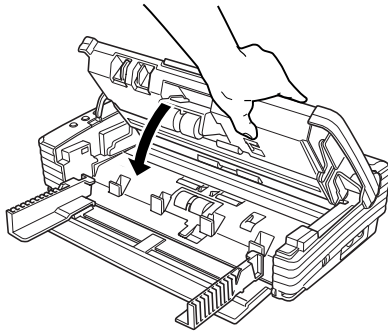
**2** Set the Document Guide Adapter onto the Document Guides.

 **Note**

Cover the Document Guides from above with the Document Guide Adapter, and insert it as far as it will go, until it clicks into place.



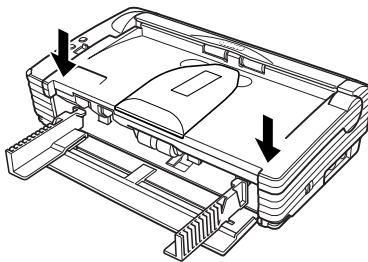
**3** Carefully close the Upper Unit.



 **IMPORTANT**

Do not force the Upper Unit to close. Doing so can damage the scanner.

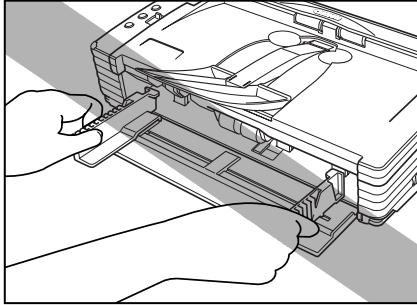
**4** Be sure that the Upper Unit is completely closed by pushing on both edges with both hands until you hear a click.





### IMPORTANT

- Do not hold the tips of the Document Guide Adaptor when moving it. Doing so can damage the document tray.

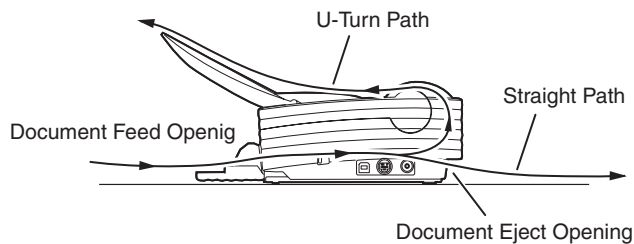


- Before removing the Document Guide Adapter, be sure to open the upper unit first. Using undue force when removing the Document Guide Adapter can damage the document tray.

---

## Document Eject Tray

The scanner has two eject methods: documents can be ejected to the front of the scanner in a U-Turn Path, or to the back of the scanner in a Straight Path. The eject method can be switched by moving the Eject Selection Lever up and down. Select the eject method according to what you need to do.



### Note

The Straight Path can be used to scan thick paper, thin paper, and ISO/JIS Standard Cards.

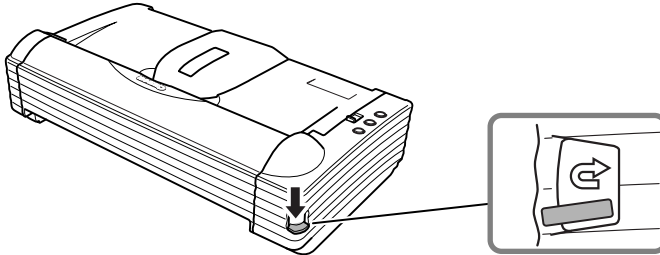
---

## Using the U-Turn Path

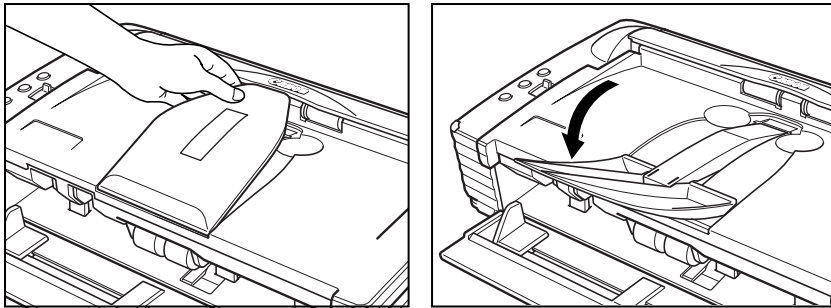
---

### 1 Lower the Eject Selection Lever.

Scanned documents will be ejected to the Document Eject Tray.

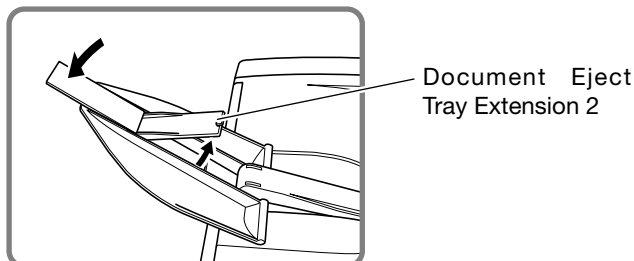


### 2 Pull the Document Eject Tray Extension towards you to open it.



### IMPORTANT

- Be careful when opening the Document Eject Tray Extension. Forcing it open can damage it.
- Never try to raise the Document Eject Tray Extension more than necessary. Doing so can damage it.
- Do not place anything other than documents on the Document Eject Tray Extension. Doing so can damage it.
- Make sure the Document Eject Tray Extension is open when using the scanner. If the Document Eject Tray Extension is not opened, ejected documents can fall from the tray and become jammed in the scanner.
- If it appears that the document may fall from the Document Eject Tray Extension and become jammed in the scanner, open Document Eject Tray Extension 2.



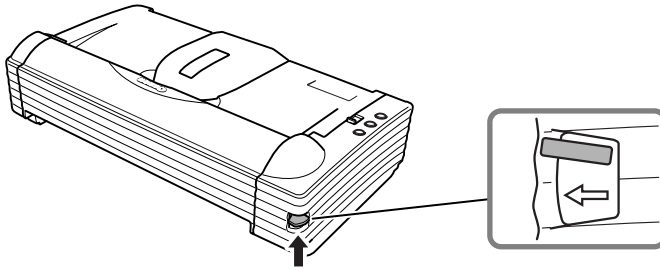
---

## Using the Straight Path

---

### 1 Raise the Eject Selection Lever.

Scanned documents will be ejected to the back of the scanner.



#### Note

When using the Straight Path, the ejected documents are stacked in reverse order to how they were fed.



#### IMPORTANT

- Be sure there is enough space for documents that are ejected behind the scanner when using the Straight Path. If there is not enough space for ejected documents, the documents may be damaged or a paper jam may occur.
- Switch the position of the Eject Selection Lever before you start scanning. Changing the lever position while scanning is being performed can cause jamming.

---

## Placing a Document for Scanning

There are two methods for paper separation, called the Page Separation mode and Bypass mode for feeding documents. Feeding documents continuously from a stack of documents placed in the feed tray is called Page Separation mode. Feeding documents one sheet at a time by hand on feeding multiple sheet documents, such as invoices that are attached at one end, is called the Bypass mode. The document feed method can be switched by moving the Feed Selection Lever.



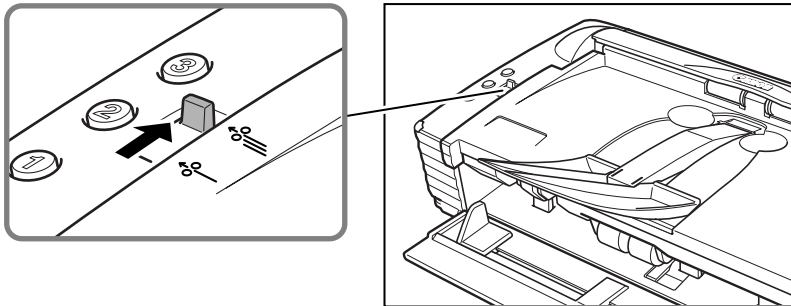
### IMPORTANT

- When placing a document for scanning, be careful to remove all paper clips, staples, etc., from the document. During the scanning process, such objects can tear the document, cause a paper jam, and damage the scanner.
- Do not wear loose clothing or jewelry that may get caught in the scanner while you are operating it. If they get caught in the scanner it may cause an injury. Be extra careful of neckties and long hair. If anything gets caught in the scanner, quickly unplug the scanner to stop it.
- If the leading edge of the documents are curled, they may cause a paper jam. If the curls are large, straighten them out before scanning.

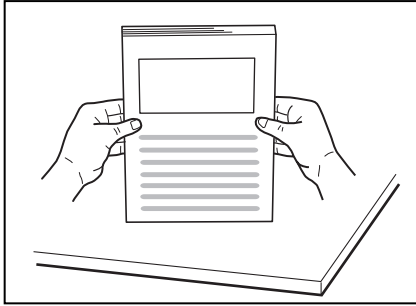
---

## How to Feed with the Page Separation Mode

- 1 Move the feed selection lever to the page separation mode (☰) side.



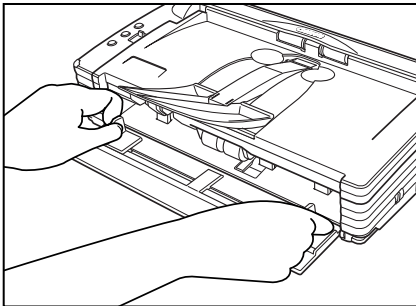
- 
- 2** Straighten the edges of the stack of documents to be scanned.



**⚠ CAUTION**

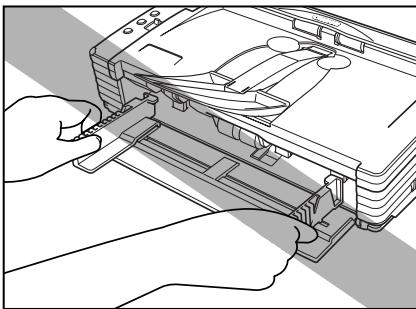
- Do not place the documents on top of the scanner to align them. Doing so may cause a malfunction.
- Be careful when placing a document in the scanner. It is possible to cut your hand on the edge of a sheet of paper.

- 3** Set the Document Guides so they are wider than the document to be scanned.

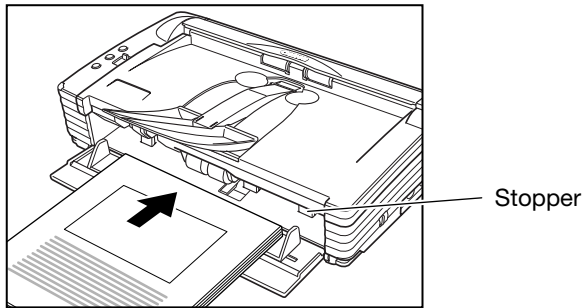


**⚠ IMPORTANT**

Do not hold the tips of the Document Guide Adaptor when installing it. Doing so can damage the document tray.

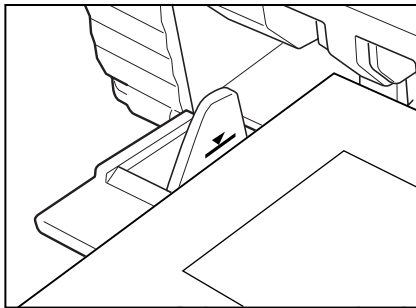


- 
- 4** Place the documents face up into the feed tray and so they touch the stoppers.

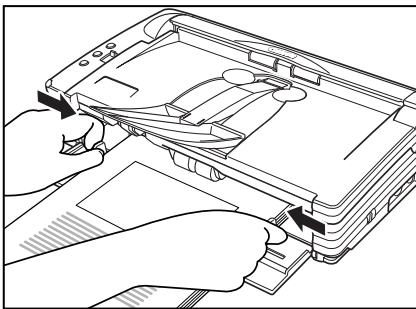


**IMPORTANT**

There is a load limit mark (▼) on the Document Guides. Do not stack documents higher than this mark (approximately 50 sheets of normal copy paper of 20 lb bond (80g/m<sup>2</sup>)). Doing so may cause a paper jam.



- 5** Adjust the Document Guides so they match the width of the document.



**Note**

Before starting a scan, make sure that the document is loaded in the scanner correctly. Scanning a curled document or a creased document can damage the document.

- 6** Start scanning from the application.





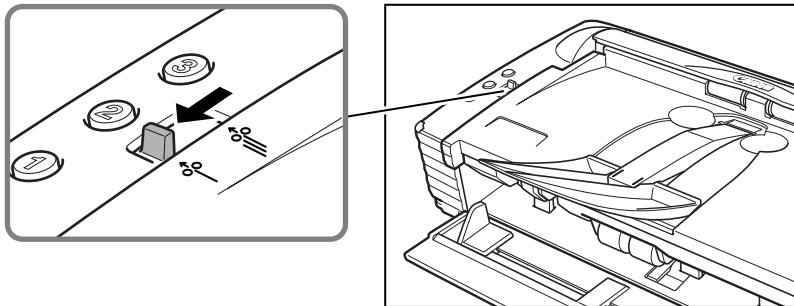
### Note

- If the paper feed operation stops due to a system error or a paper jam while the scanner is scanning, resolve the problem, make sure that the scanned image of the last page that was fed has been stored, and then resume the scanning operation.
- Note that documents that are printed on thin paper may fall out of the Document Eject Tray.
- After you finish scanning, close the Document Feed Tray and the Document Eject Tray Extension to prevent damage to the scanner while it is not being used.

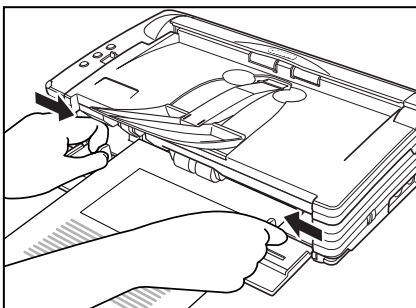
---

## How to Feed with the Bypass Mode

- 1 Move the Feed Selection Lever to the nonseparated document (←) side.

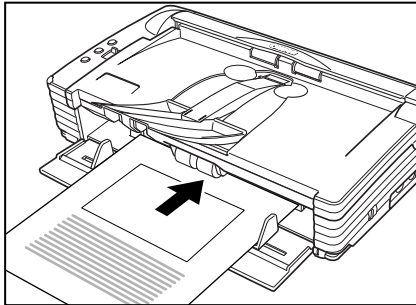


- 2 Place the document into the Document Feed Tray one sheet at a time and adjust the position of Document Guides.



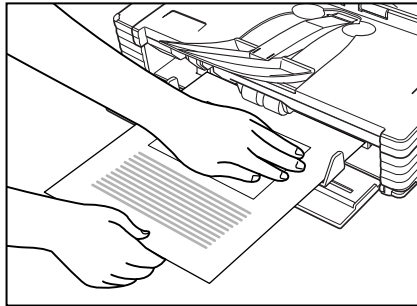
- 3 Start scanning from the application.

- 
- 4** Place the documents face up one at a time so they touch the document stopper. The document is scanned as it is detected.



 **IMPORTANT**

- When scanning documents that are fastened together, such as invoices, set the edge that is fastened together as the leading edge.
- Note that when scanning with nonseparated feed, if you place several documents that are not fastened together on the feed tray at one time, they will be fed together.
- In particular, very thin or curled documents will not be fed very well. In this case, lightly press on the leading edge of the documents as you feed them.



- After you finish scanning, close the Document Feed Tray and the Document Eject Tray Extension to prevent damage to the scanner while it is not being used.

---

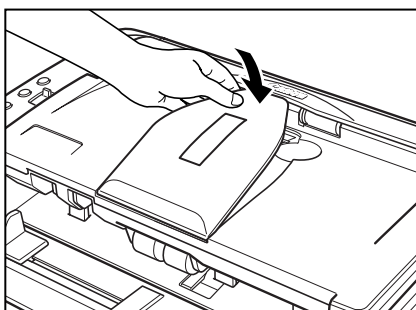
## Clearing a Paper Jam

When paper jams occur during scanning, use the following procedure to clear them.

### CAUTION

**Be careful when removing jammed paper. It is possible to cut your hand on the edge of a sheet of paper.**

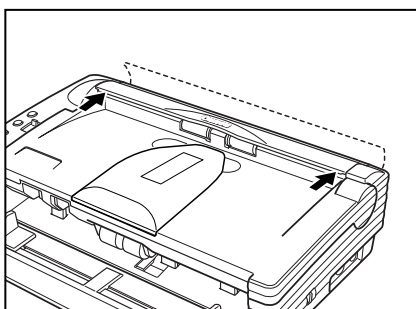
- 1** Remove any documents that have been left in the eject tray.
- 2** Close the Document Eject Tray Extension.



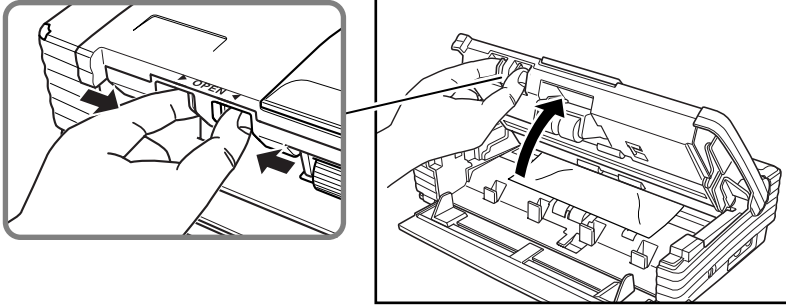
### IMPORTANT

If document ejection is stopped part way, perform this operation with the eject tray guide open. Attempting to force the Document Eject Tray Extension closed can cause creasing of the document.

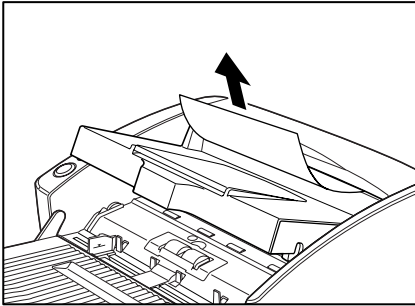
- 3** Press on both sides of the back cover to open it.



- 
- 4** Pressing the OPEN Knob from both sides, raise the Upper Unit.



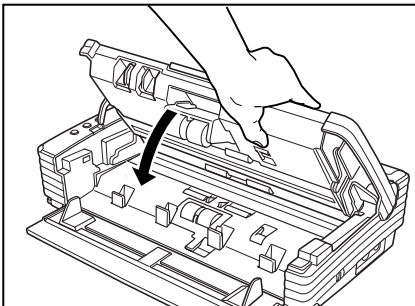
- 5** Remove the jammed document.



 **IMPORTANT**

Be sure to pull the document carefully, without applying too much force. Should the document tear, be sure to remove any part remaining in the scanner.

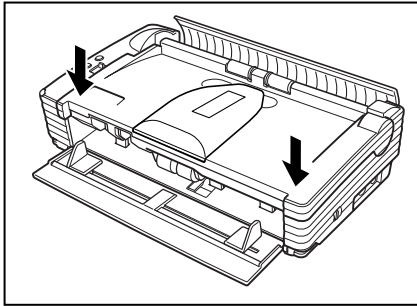
- 6** Close the Upper Unit slowly.



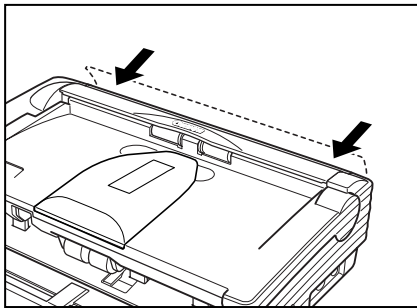
 **IMPORTANT**

Do not force the Upper Unit to close. Doing so may damage the scanner.

- 
- 7** Be sure that the upper unit is completely closed by pushing on both edges with both hands until you hear a click.



- 8** Press on both sides of the back cover to close it.



 **IMPORTANT**

Be sure to press on both sides of the upper unit and back cover to ensure that they are securely closed. Feed errors will occur if only one side is closed.

 **Note**

After removing the jammed paper, check to see if the last page was scanned, and then continue scanning.

---

## Other Functions

This scanner also supports the scanning functions described below.

### Job Function

---

Job Registration Tool can be used to assign a scan button function one of the scanner's Job buttons.

If it is, placing a document on the scanner and pressing the applicable Job button will perform scanning in accordance with the parameters configured using Job Registration Tool.

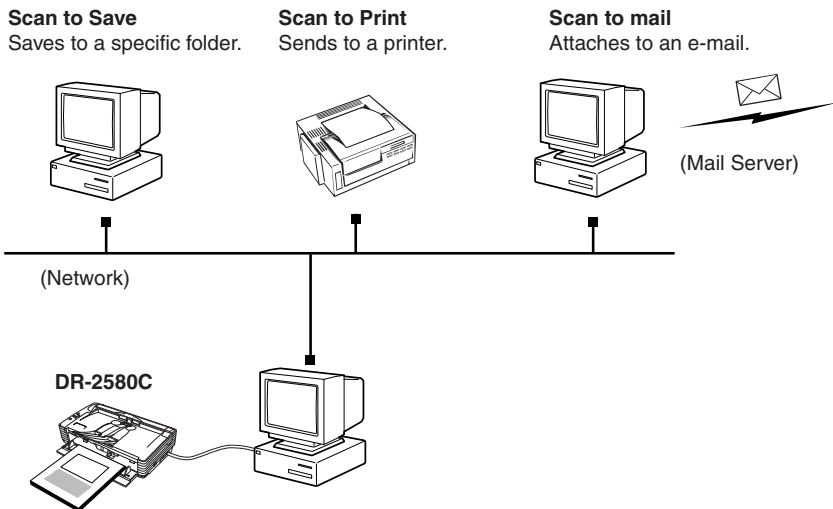
The following functions can be assigned using Job Registration Tool for automatic processing of scanned images.

- Scan to Save: Saves the scanned image to a shared folder or other folder.
- Scan to Print: Sends the scanned image to a specific printer.
- Scan to e-mail: Attaches the scanned image to e-mail.



#### Note

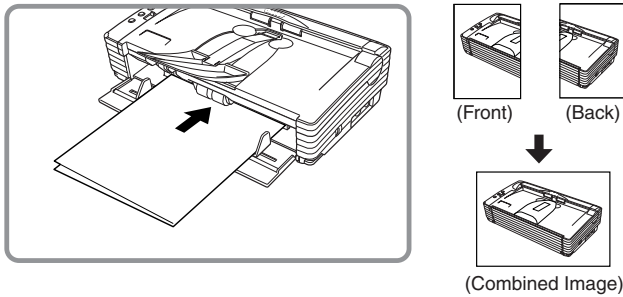
See Job Registration Tool help for details about how to use it. (See “Using Job Tools” on p. 40.)



---

## Scanning Folio (Folded Document)

The scanner uses a folio scanning method scan documents that are bigger than LTR/A4 size paper (maximum 11" x 17"/A3 size paper). To do folio scanning, fold the document in half and set it on the scanner, both sides of the folded document are scanned and are combined as a single image.



### IMPORTANT

- Attach the Document Guide Adaptor to prevent documents from skewing when doing folio scan. (See p. 47.)
- Use nonseparated document scanning when doing folio scan.
- Firmly set the fold in the document. The fold in the document may cause paper jams or misaligned images.



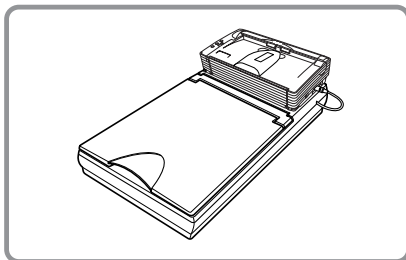
### Note

- Folio scanning is set in the ISIS/TWAIN driver.
- The image on the front of the folded document appears as the left side of the image.
- Combined images can be a maximum 11" x 17"/A3 size.
- A seam may appear in where the images are combined if the document or the fold in the document is crooked.

---

## Flatbed Scanner Unit (Option)

A flatbed scanner unit is available for the DR-2580C as an option. The flatbed scanner unit can be used to scan thick documents, books, and other originals that cannot pass through the feeder, without changing to a different scanner or application.



### Note

The flatbed scanner unit cannot operate in a stand-alone configuration. Contact your retailer for more detailed information.

---

## Regular Maintenance

---

Clean the scanner on a regular basis as described below to maintain peak scanning quality.

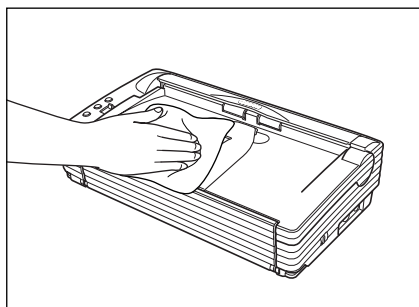
### **⚠ CAUTION**

- **When cleaning the scanner or inside of the scanner, turn OFF the power switch and unplug the power cord from the outlet.**
- **Do not use excessive force when removing or attaching the rollers. Doing so may damage them.**
- **Never use paint thinner, alcohol, or other organic solvents to clean the scanner. Such solvents can damage or discolor the exterior of the scanner. They also create a risk of fire and electrical shock.**

---

### Cleaning the Scanner

To clean the exterior of the scanner, dampen a cloth with water or a mild detergent, wring the cloth out thoroughly, and then wipe the dirt away. Then use a dry, soft cloth to wipe away any moisture.



---

### Cleaning inside the Scanner

Dust or paper particles inside the scanner can cause lines in scanned images. Use a blower for regular cleaning of dust and paper particles from inside the scanner. After finishing a large scanning job, you should turn OFF the scanner and then clean any paper particles that are remaining.

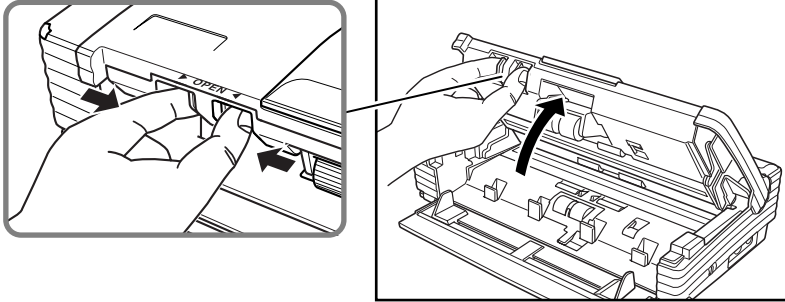


---

## Cleaning the Scanning Glass, Shading Boards and the Rollers

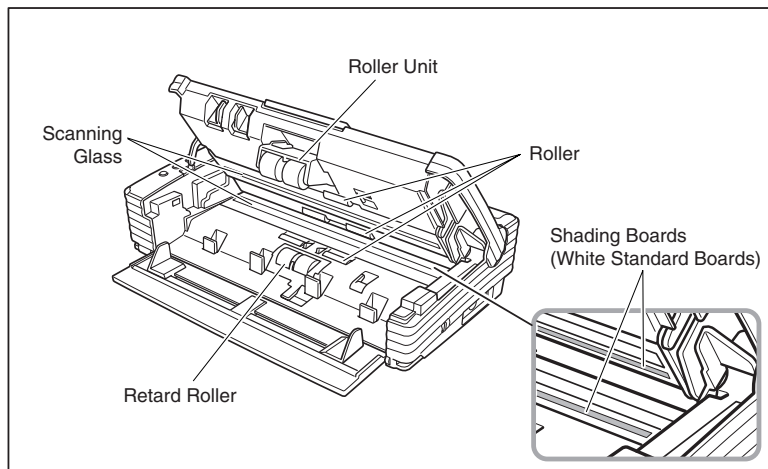
If scanned images have extraneous marks, or if the scanned documents are dirty, then the scanning glass or rollers inside the scanner may be dirty. Clean them periodically.

- 1 Pressing the OPEN Knob from both sides and open it slowly until it stops.

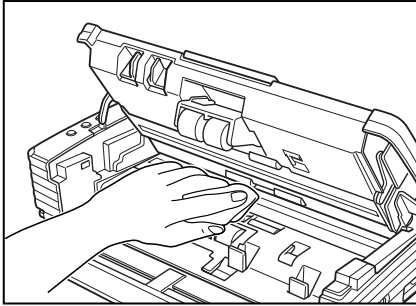


### Note

- The location of the scanning glass and various rollers are shown below.
- The scanner has white, 0.08" (2mm) wide shading boards located at the front and back of the upper and lower scanning glasses. The scanner uses the shading boards to determine white standards during scanning. Dirty shading boards can cause stripes in scanned images. Periodically clean them to ensure good scanning results.



- 
- 2 Use a blower to keep the interior of the scanner free of dust and paper particles.
  - 3 Use a clean dry cloth to wipe dirt off the scanning glass.  
Wipe both the top and bottom scanning glasses.



**! CAUTION**

**Do not use spray type cleaners to clean the scanner. Precision mechanisms, such as the light source, may get wet which will cause a malfunction.**

**👉 IMPORTANT**

Scratches on the scanning glass may cause marks on the images and could cause feeding errors. If there are scratches on the scanning glass, contact your local authorized Canon dealers or service representative.

- 4 Use a commercially available cotton swab to clean off any dirt from the shading boards at the front and back of the scanning glasses.

**👉 IMPORTANT**

Wipe both top and bottom shading boards.

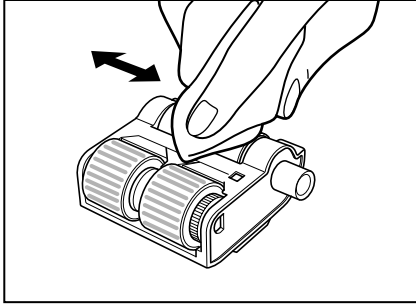
- 5 Wipe the rollers with a firmly wrung cloth moistened with water.

**👉 IMPORTANT**

- Do not use detergent to clean the rollers, since any detergent on the rollers could cause feeding error.
- If you cannot freely rotate the rollers, do not force them to rotate. Just clean the part that you can see. Forcing the rollers to rotate may cause a feeding error.

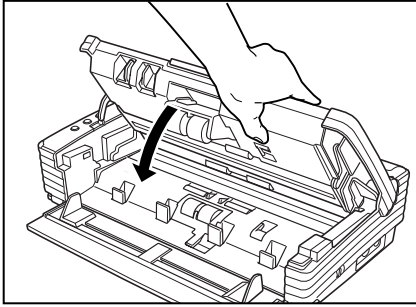
- 6 Remove the roller unit and retard roller. (See “Removing and Attaching the Rollers” on p. 76.)

- 
- 7** Wipe the removed rollers with a firmly wrung cloth moistened with water.



- 8** Attach the rollers that were removed. (See “Removing and Attaching the Rollers” on p. 66.)

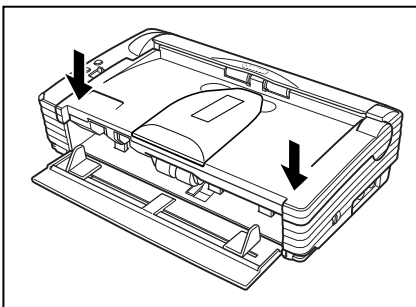
- 9** Close the Upper Unit slowly.



 **IMPORTANT**

Do not force the Upper Unit to close. Doing so may damage the scanner.

- 10** Close the Upper Unit slowly. Be sure that the Upper Unit is completely closed by pushing on both edges with both hands until you hear a click.



---

## Removing and Attaching the Rollers

Follow the relevant procedure to remove and attach the roller unit and retard roller, when you clean them or replace them.



### IMPORTANT

Feed rollers are consumable parts. When the rollers start to wear out, paper jams and misfeeds may occur more often. When this happens, buy a roller replacement kit, and replace the roller unit and the retard roller.



### CAUTION

- **Turn ON the power to the scanner to remove or attach the pickup roller. Be careful when working on the scanner when the power is ON.**
- **Do not use excessive force when removing or attaching the rollers. Doing so may damage them.**

---

## Roller Replacement Cycle

When the number of pages scanned exceeds 100,000, a roller replacement message will appear when the computer is started up. Buy a roller replacement kit, and replace the roller unit, and the retard roller.



### IMPORTANT

- If misfeeds happen often, check the rollers for wear, and replace them if necessary before the message is displayed.
- Be sure to reset the counter after replacing the rollers. (See “Resetting the Counter” on p. 67.)
- Contact your local authorized Canon dealer or service representative for information about the roller replacement kit (roller unit and retard roller).

---

## Resetting the Counter

After replacing the feed rollers, reset the counter according to the following procedure.

- 1 Click the [Start] button, point to [Settings], and the click [Control panel].



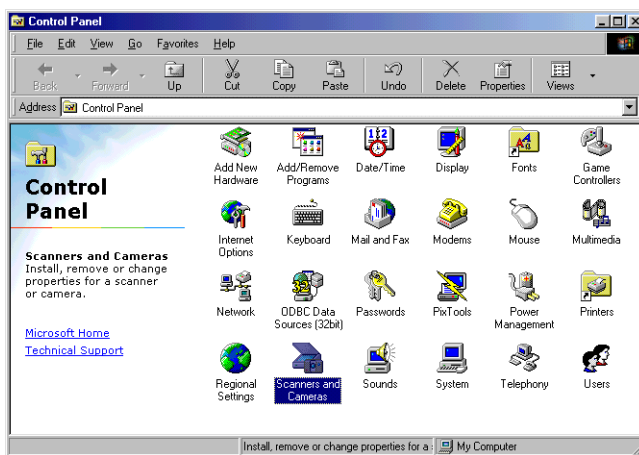
### Note

- If you are using Windows XP, on the Start menu, click [Control panel].



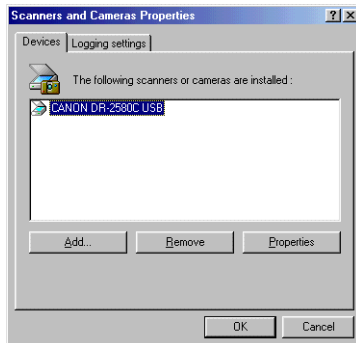
The [Control panel] window is displayed.

- 2 Double-click the [Scanners and cameras] icon.



The [Scanners and cameras] dialog box is displayed.

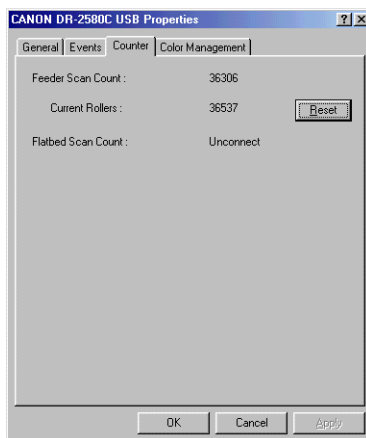
**3** Click on [Properties] for the scanner you are using.



**4** Click the [Counter] tab.



**5** Press the [Reset] button, and then make sure that the counter for the Roller being used is set to 0.



---

## Removing and Installing the Roller Unit

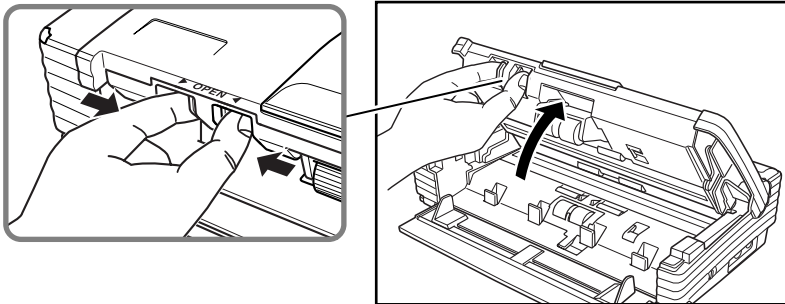
Follow the procedure below to remove and install the roller unit for cleaning or replacement.

### **⚠ CAUTION**

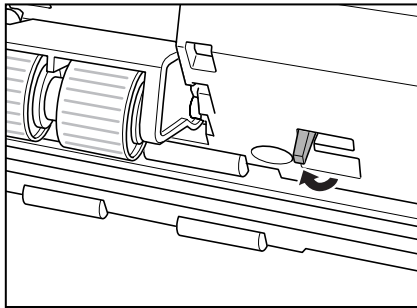
**Do not use excessive force when removing or attaching the rollers. Doing so may damage them.**

### **Remove**

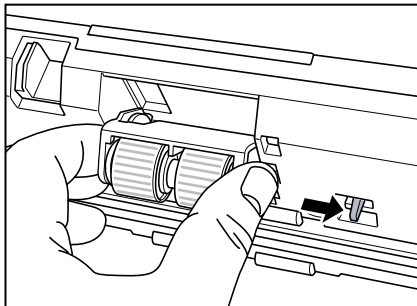
- 1** Hold the Upper Unit as shown in the diagram, and open it slowly until it stops.



- 2** Move the roller lock lever towards you.

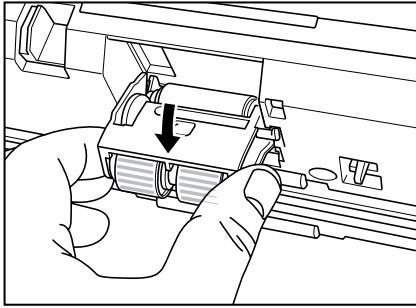


- 3** Supporting the roller unit with your hand, slide the lock lever to the right.

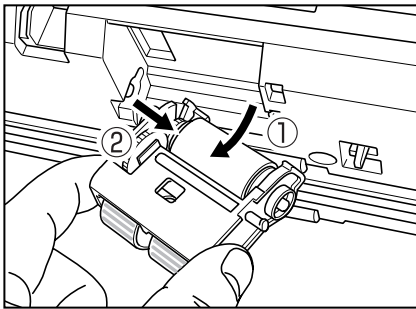


---

**4** Lower the roller unit.

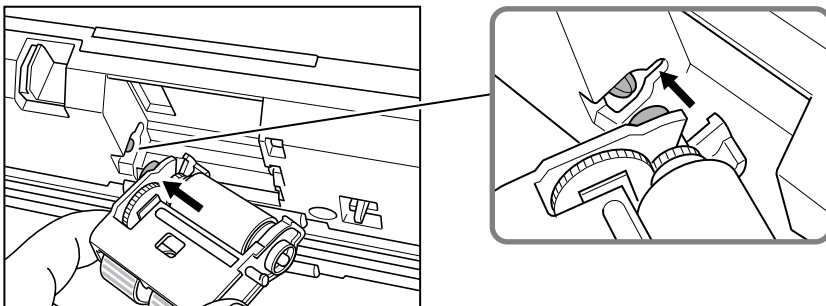


**5** First detach the right side of the roller unit (①), and then remove the roller unit (②).



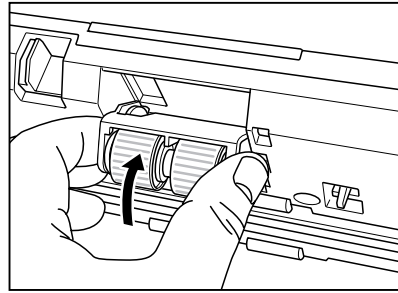
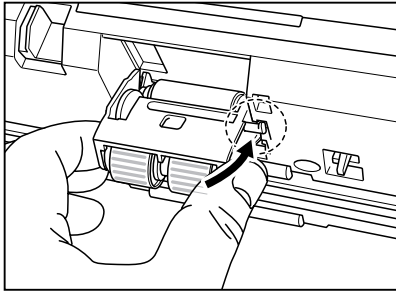
**Attach**

**1** Set the roller unit onto the scanner's shaft.

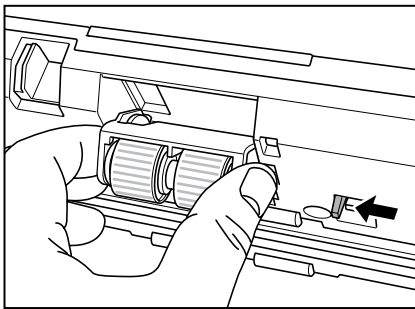




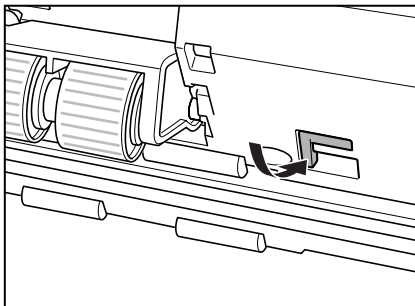
- 
- 2** Insert the protrusion of the roller unit into the groove in the scanner, and then lift the roller unit.



- 3** Slide the roller lock lever to the left.

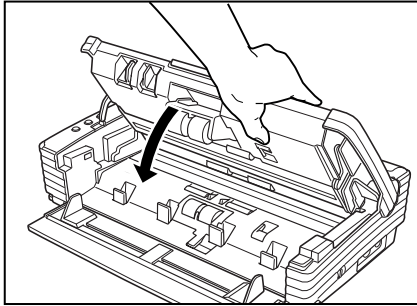


- 4** Push the roller lock lever towards the back of the scanner to lock the roller unit in place.



---

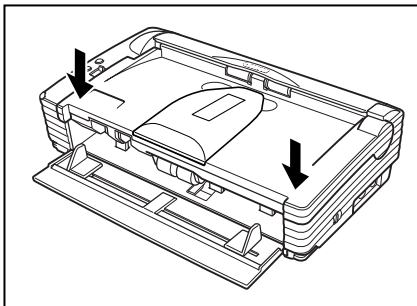
**5** Close the Upper Unit slowly.



**IMPORTANT**

Do not force the Upper Unit to close. Doing so may damage the scanner.

**6** Close the Upper Unit slowly. Be sure that the Upper Unit is completely closed by pushing on both edges with both hands until you hear a click.



---

## Removing and Attaching the Retard Roller

---

Follow the procedure below to remove and install the retard roller for cleaning or replacement.

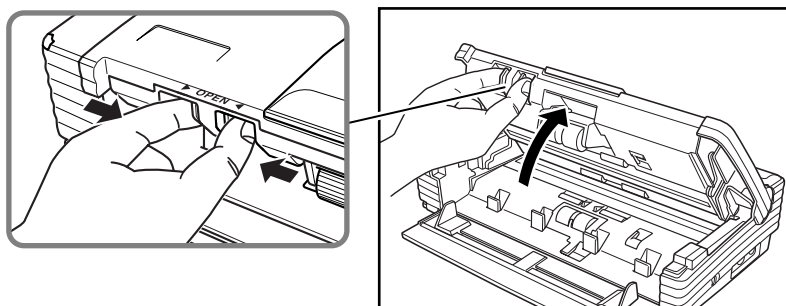
**⚠ CAUTION**

**Do not use excessive force when removing or attaching the rollers. Doing so may damage them.**

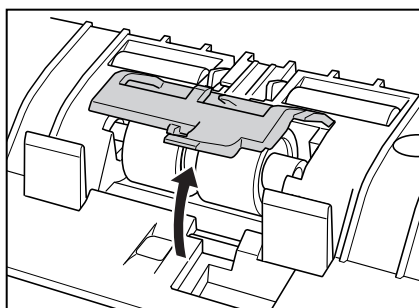
### Remove

---

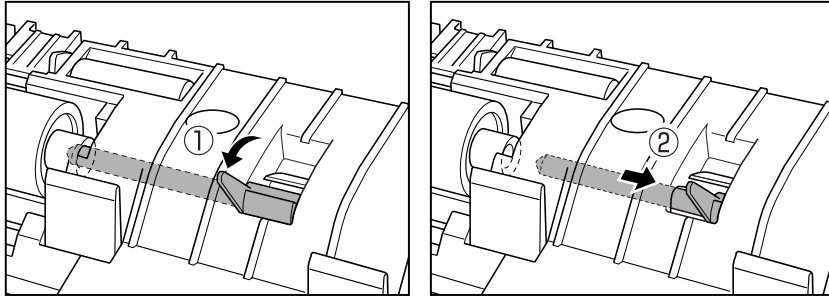
- 1** Grasping the OPEN knob as shown in the diagram, and carefully open the Upper Unit until it stops.



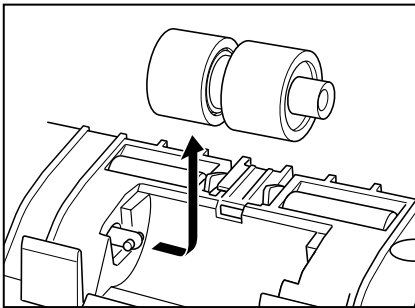
- 2** Remove the roller cover.



- 
- 3** Move the roller lock lever upward (①), and then slide it to the right (②).

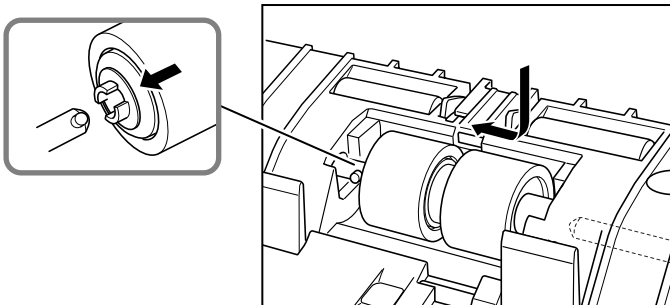


- 4** Shift the retard roller to the right to remove it.

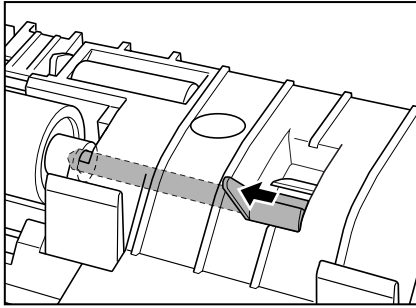


### Attach

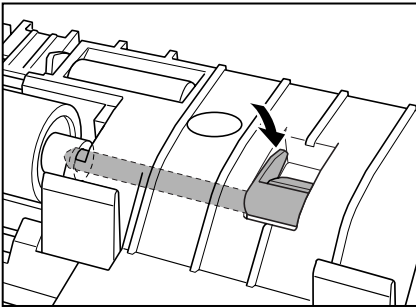
- 1** Position the retard roller so the notch in the roller is facing the scanner's shaft.



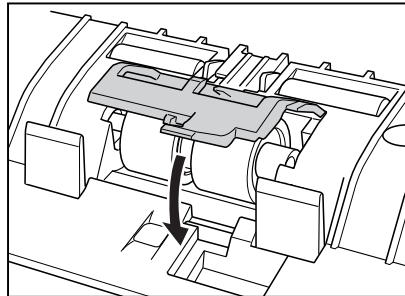
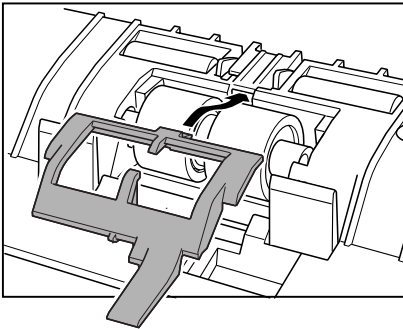
- 
- 2** Slide the roller lock lever to the left, and insert it into the retard roller hole.



- 3** Push the roller lock lever towards the back of the scanner to lock the retard roller in place.

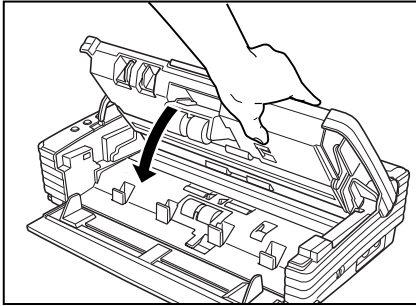


- 4** Attach the roller cover.



---

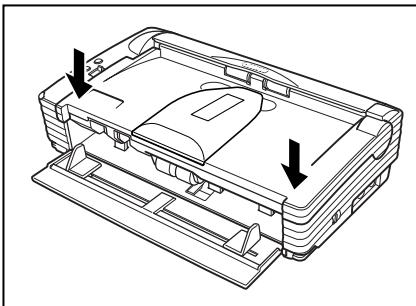
**5** Close the Upper Unit slowly.



**IMPORTANT**

Do not force the Upper Unit to close. Doing so may damage the scanner.

**6** Close the Upper Unit slowly. Be sure that the Upper Unit is completely closed by pushing on both edges with both hands until you hear a click.



---

# Troubleshooting

---

This section describes common problems that may occur while you are using the scanner, and how to resolve them.

Refer to the troubleshooting section related to the problem that you have encountered.

<b>The Scanner Does Not Turn ON .....</b>	<b>See P. 77.</b>
<b>The PC Does Not Recognize the Scanner .....</b>	<b>See P. 78.</b>
<b>Scanning Is Slow .....</b>	<b>See P. 79.</b>
<b>Images Are Not Scanned .....</b>	<b>See P. 79.</b>
<b>Documents Do Not Feed Properly .....</b>	<b>See P. 80.</b>
<b>Resulting Scanned Images Are Not Correct .....</b>	<b>See P. 80.</b>
<b>The flatbed scanner (option) does not work .....</b>	<b>See P. 81.</b>

If after consulting the above section you still cannot resolve the problem, contact your local authorized Canon dealer or your service representative.

## The Scanner Does Not Turn ON

Check the following:

- Is the power switch in the ON position? (See p. 22.)
- Is the power cord plugged into an outlet? (See p. 21.)

---

## The PC Does Not Recognize the Scanner

The following are possible causes of the PC failing to recognize the scanner. Check each possible cause.

---

<b>Cause</b>	The scanner is not connected correctly.
<b>Remedy</b>	Check the USB cable connections between the scanner and the PC. (See “Connecting via USB” on p.20.)
<b>Cause</b>	The USB 2.0 interface card is not inserted in the PC correctly.
<b>Remedy</b>	Reseat the USB 2.0 interface card on the PC correctly referring to the instruction manual for the USB 2.0 interface card. Also, confirm whether the USB interface card is recognized by the operating system (Windows) you are using.
<b>Cause</b>	The scanner is not ON.
<b>Remedy</b>	Refer to “The Scanner Does Not Turn On,” (See p. 80.) and make sure that the scanner is turned ON. If the scanner is not turned ON, turn it ON. (See p. 22.)
<b>Cause</b>	The USB 2.0 interface card does not support the scanner.
<b>Remedy</b>	Use a recommended USB 2.0 interface card. (See p.19.)
<b>Cause</b>	The scanner does not support the USB cable.
<b>Remedy</b>	Use the USB cable provided with the scanner. (See p. 20.)
<b>Cause</b>	The scanner does not support the USB HUB.
<b>Remedy</b>	Remove the USB HUB to use the scanner. (See p. 20.)

---

## Scanning Is Slow

The following problems might cause the scanner to be slow. Try the solutions according to the problem.

---

<b>Cause</b>	The USB 2.0 interface card does not support Hi-Speed 2.0.
<b>Remedy</b>	Use the recommended USB 2.0 interface card. (See p. 19.)
<b>Cause</b>	The USB 2.0 interface cable does not support Hi-Speed 2.0.
<b>Remedy</b>	Use the USB cable provided with the scanner. (See p. 20.)
<b>Cause</b>	The USB HUB does not support Hi-Speed 2.0.
<b>Remedy</b>	Remove the USB HUB or replace it with one that supports HI-Speed 2.0. (See p. 20.)

---



---

## Images Are Not Scanned

Check the following if the scanner does not scan an image even though the scanning operation is being performed:

- Is the scanner correctly connected to the PC?
- Has the scanner driver been installed?
- Has the application software been installed correctly? Has the application software been set up correctly?
- Is there a problem in the PC system?
- Is the flatbed scanner unit correctly attached?



### Note

- When system errors result in the scanner not functioning at all, turn OFF the scanner and wait at least ten seconds before turning it back ON.
- Make sure that the last document scanned was scanned correctly when scanning continues.
- When using the flatbed scanner unit (option), make sure that the flatbed scanner unit is correctly attached to the DR-2580C before scanning. Scanning cannot be done if the flatbed scanner unit is not correctly attached to the DR-2580C.

## Documents Do Not Feed Properly

The following are possible causes of a document failing to feed properly. Check each possible cause.

---

Cause	Attempting to scan a document of a size, thickness, or weight that the scanner cannot scan.
Remedy	Check the size, thickness, and weight of the document. For precautions concerning documents. (See “Documents,” on p. 45.)
Cause	The rollers inside the scanner are dirty or worn.
Remedy	Refer to page 63 and clean the rollers. If the rollers are worn, then they need to be replaced. Contact your local authorized Canon dealer or service representative to purchase a roller replacement kit.

---

For details on how to clear jammed paper. (See “Clearing a Paper Jam,” on p. 57.)

---

## Resulting Scanned Images Are Not Correct

If the resulting scanned images are not crisp, if there are lines or spots on the images, or if there is some other problem with scanned images, likely causes are listed below. Check each item and take the appropriate action.

---

**Cause** The scanning glass or the rollers inside the scanner are dirty.

**Remedy** Clean the scanning glass and rollers as described. (See p. 63.)

---

**Cause** The scanner's internal platen glass is scratched.

**Remedy** Consult with the retailer who sold you the scanner.

---

**Cause** The application software is not set up properly for scanning.

**Remedy** Check the scanning related settings, such as brightness in the application software.

For example, if the document cannot be scanned at all, it is possible that the brightness setting is too high. If the resulting scanned images are too dark, it is possible that the brightness setting is too low.

---

**Cause** The scanner driver or application software is not running normally.

**Remedy** If the software is set properly for scanning and normal scanning is still not possible, it is possible that the scanner driver or the application software is not running normally. Reinstall the scanning driver or the application software. For details on how to install the scanner driver. (See "Installing the ISIS/TWAIN Driver," on p. 27.) For details on how to install the application software, refer to the application software instruction manual.

---

**Cause** Attempting to use a function of the DR-2580C that is not supported by the application software.

**Remedy** Some application software may not support certain functions, such as automatically detecting the paper size or changing the scanning mode/resolution through the scan panel. Using such application software for scanning may yield abnormal scanning results. Try scanning without using functions such as automatic paper size detection or margins settings.

---

If problems with the scanned images persist even after trying these solutions, then contact your local authorized Canon dealer or service representative.

---

## The flatbed scanner (option) does not work.

Operational failure of the optional flatbed scanner unit can be caused by any of the reasons described below. Try the solutions according to the problem.

---

**Cause** The ISIS/TWAIN scanner is set to something other than Flatbed.

**Remedy** Set the ISIS/TWAIN driver to Flatbed. Refer to Help for the ISIS/TWAIN Driver for information about the ISIS/TWAIN Driver settings.

---

**Cause** The interface connector is not connected.

**Remedy** Check the connections between the DR-2580C and the flatbed scanner unit.

---

**Cause** The DR-2580C is not installed correctly. (Loose)

**Remedy** Check the document size, thickness, and paper type. See Remove the DR-2580C scanner and then reinstall it correctly.

---

**Cause** The hook is not correctly attached to the DR-2580C.

**Remedy** Remove the DR-2580C scanner and then reinstall it correctly.

---

**Cause** The DR-2580C was installed without removing the transport locks.

**Remedy** Remove the DR-2580C and remove the transport locks.

---

For information about removing the flatbed scanner unit, see the manual that came with it.

# Specifications

Type	Sheet through image scanner	
<b>Scanning Document Specifications</b>		
Width:	2" to 8.50"	(53 to 216 mm)
Length:	2.8" to 13.99"	(70 to 355.5 mm)
<b>Weight: Using the U-Turn Path</b>		
(separated documents)	14 to 32 lb bond	(0.0024" to 0.0059")
	52 to 128 g/m <sup>2</sup>	(0.06 mm to 0.15 mm)
(nonseparated documents)	11 to 40 lb bond	(0.0019" to 0.0078")
	42 to 157 g/m <sup>2</sup>	(0.05 mm to 0.2 mm)
<b>Weight: Using the Straight Path</b>		
(separated documents)	11 to 40 lb bond	(0.0019" to 0.0078")
	42 to 157 g/m <sup>2</sup>	(0.05 mm to 0.2 mm)
(nonseparated documents)	11 to 40 lb bond	(0.0019" to 0.0078")
	42 to 157 g/m <sup>2</sup>	(0.05 mm to 0.2 mm)
Supports ISO/JIS standard cards are supported. (excluding embossed cards)		
Size:	2.12" x 3.36" (53.9 mm x 85.5 mm)	
Thickness:	0.033" (0.84 mm) or less	
Document Feeding Method	Automatic/Manual	
Scanning Method	Contact image sensor	
Light Source	LED	
Scanning Side	Simplex/Duplex/flatbed (option)	
Scanning Modes	Black/white, advanced text enhancement, error diffusion, 256 shade grayscale, 24 bit color	
Scanning Resolution	100 x 100 dpi, 150 x 150 dpi, 200 x 200 dpi	
(Primary Scan Lines x Secondary Scan Lines)	240 x 240 dpi, 300 x 300 dpi, 400 x 400 dpi	
	600 x 600 dpi	
Scanning Speed	A4	
Black and White	Simplex	
	200 x 200 dpi	__ pages/minute
	300 x 300 dpi	__ pages/minute
	600 x 600 dpi	__ pages/minute
	Duplex	
	200 x 200 dpi	__ images/minute
	300 x 300 dpi	__ images/minute
	600 x 600 dpi	__ images/minute
256-level Gray	Simplex	
	200 x 200 dpi	__ pages/minute
	300 x 300 dpi	__ pages/minute
	600 x 600 dpi	__ pages/minute
	Duplex	
	200 x 200 dpi	__ images/minute
	300 x 300 dpi	__ images/minute
	600 x 600 dpi	__ images/minute
24-bit Color	Simplex	

---

	200 x 200 dpi	__ pages/minute
	300 x 300 dpi	__ pages/minute
	600 x 600 dpi	__ pages/minute
Duplex	200 x 200 dpi	__ images/minute
	300 x 300 dpi	__ images/minute
	600 x 600 dpi	__ images/minute
Amount of paper that can be stacked in automatic feeder	5 mm stack, maximum (50 sheets of 20 lb bond (80 g/m <sup>2</sup> ))	
Interface	Hi-Speed USB 2.0	
Other Functions	Blank page skip, job function, folio scan	
Dimensions (with flatbed scanner unit)	3.20" x 11.9" x 6.65" (H x W x D) 81.5 mm x 304mm x 169 mm (H x W x D)	
Dimensions (with trays open)	6.10" x 12.4" x 21.5" (H x W x D) 155 mm x 315 mm x 545 mm (H x W x D)	
Weight	Approximately 4 lb (1.8 kg) (7.9 lb (3.6 kg) with flatbed scanner unit)	
Power Supply	DC16V	
Power Consumption	Scanning:	__ W maximum
	Standby:	Under __ W
Noise	Not more than __ dB	
Operating Environment	Temperature:	10°C to 32.5°C (50°F to 90.5°F)
	Humidity:	20% to 80% RH

### AC adaptor (100 - 240V)

---

Model	MG1-3607
Input	AC 100-240V 50/60Hz 65VA-82VA
Output	DC16V 1.8A
Power Supply	0.5 W max. (separate AC adaptor)
Weight	Approximately 0.7 lb (0.3 kg) (including power cord)

---

## Options

---

Flatbed Scanner Unit (Model:0106B001)  
Flatbed Scanner Unit for the DR-2580C scanner.

Bar code module (product code: 0434B003)  
Additional software to allow the ISIS/TWAIN driver to recognize bar codes.

- Contact your retailer for detailed information about the options.

## Replacement parts

---

Roller replacement kit (product code: 0106B002)  
Kit to replace the feed rollers (roller unit, and retard roller).

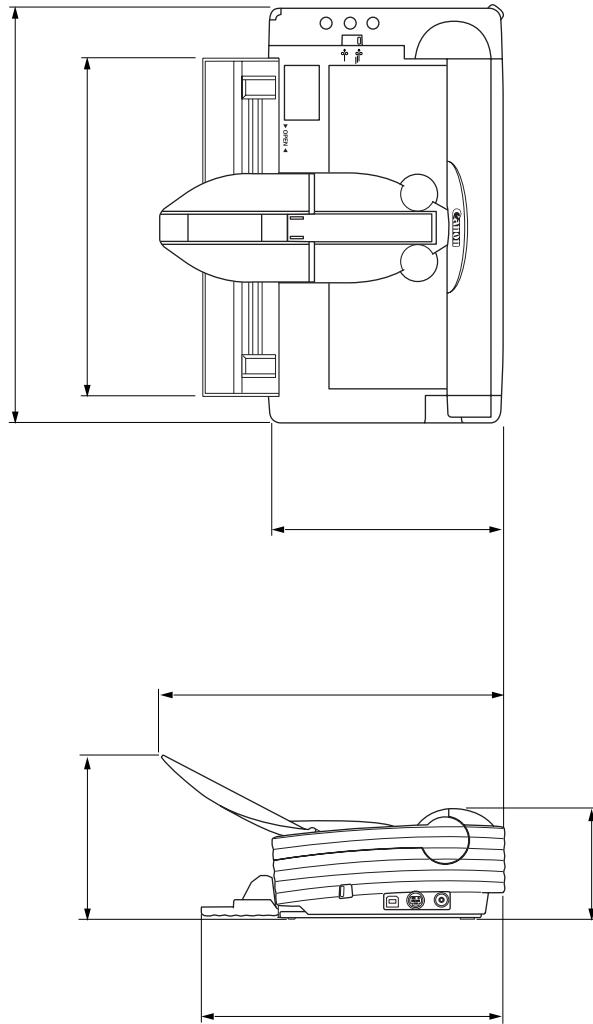
- Refer to “Removing and Attaching the Rollers,” on p. 66 for information about replacing the rollers.
- Contact your local authorized Canon dealer or service representative for detailed information about the options and replacement parts.

---

## External Dimensions

---

Units: inches (units in parentheses are millimeters)



---

# Index

## A

AC adapter ..... 6

## C

CaptuerPerfect

    Install ..... 33

    Uninstall ..... 36

    Using ..... 42

Checking the Packing List ..... 11

Cleaning

    Glass ..... 63

    Inside ..... 62

    Scanner ..... 62

## D

Document Eject Opening ..... 15

Document Eject Tray ..... 14, 49

Document Eject Tray Extension ..... 14, 50

Document Eject Tray Extension2 ..... 14, 50

Document Feed Tray ..... 14, 47

Document Guide Adapter ..... 48

Document Guides ..... 14

Documents ..... 45

## E

Eject Selection Lever ..... 15, 49

## F

Features ..... 9

Feed Selection Lever ..... 14

Feed with bypass mode ..... 55

Feed with Page separation mode ..... 52

Flatbed Scanner Unit ..... 61

## I

Installation Requirements ..... 16

Interface boards ..... 19

ISIS/TWAIN Driver

    Install ..... 27

    Uninstall ..... 36

    Using ..... 39

## J

Job Buttons ..... 14

Job Function ..... 60

Job Label ..... 15, 41

Job Tool

    Install ..... 30

    Uninstall ..... 36

    Using ..... 40

## K

Kensington ..... 15

## L

Loading a Document for Scanning ..... 52

## N

Names of Parts ..... 14

Notes Concerning Disposal ..... 8

Notes on Normal Handling ..... 7

## O

OPEN Knob ..... 14

Option Connector ..... 15

## P

Paper Jam ..... 57

Power connector ..... 15

Power Indicator ..... 14

Power Switch ..... 15

## R

Regular Maintenance ..... 62

Retard Roller ..... 73

Roller ..... 66

    Replacement Cycle ..... 66

    Resetting the Counter ..... 67

Roller Unit ..... 69

## S

Scanner

    Preparation ..... 47

    Installation Procedure ..... 18

    Recognizing ..... 23

Straight Path ..... 51

Scanning Folio ..... 61

Specifications ..... 82

    AC Adaptor ..... 83

    External Dimensions ..... 85

    Options ..... 84

    Replacement parts ..... 84

    Scanner ..... 82

## T

Troubleshooting ..... 77

## U

Upper unit ..... 14

USB Connector ..... 15

U-Turn Path ..... 50



# MEMO

# MEMO

## **FCC REGULATIONS (For 120 V model)**

Document Scanner, Model M11051

This device complies with Part 15 of the FCC Rules. Operation is subject to the following two conditions: (1) This device may not cause harmful interference, and (2) this device must accept any interference received, including interference that may cause undesired operation.

**Note:** This equipment has been tested and found to comply with the limits for a Class B digital device, pursuant to Part 15 of the FCC Rules. These limits are designed to provide reasonable protection against harmful interference in a residential installation. This equipment generates, uses, and can radiate radio frequency energy and, if not installed and used in accordance with the instructions, may cause harmful interference to radio communications. However, there is no guarantee that interference will not occur in a particular installation. If this equipment does cause harmful interference to radio or television reception, which can be determined by turning the equipment off and on, the user is encouraged to try to correct the interference by one or more of the following measures:

- Reorient or relocate the receiving antenna.
- Increase the separation between the equipment and receiver.
- Connect the equipment into an outlet on a circuit different from that to which the receiver is connected.
- Consult the dealer or an experienced radio/TV technician for help.

Use of shielded cable is required to comply with class B limits in Subpart B of Part 15 of FCC Rules.

Do not make any changes or modifications to the equipment unless otherwise specified in the manual. If such changes or modifications should be made, you could be required to stop operation of the equipment.

Canon U.S.A. Inc.

One Canon Plaza, Lake Success NY 11042, U.S.A.

Tel. No. (516)328-5600

## **RADIO INTERFERENCE REGULATIONS (For 120 V models)**

This digital apparatus does not exceed the Class B limits for radio noise emissions from digital apparatus as set out in the Interference-causing equipment standard entitled "Digital Apparatus", ICES-003 of the Industry Canada.

## **RÈGLEMENT SUR LE BROUILLAGE RADIOÉLECTRIQUE (For 120 V models)**

Cet appareil numérique respecte les limites de bruits radioélectriques applicables aux appareils numériques de Classe B prescrites dans la norme sur le matériel brouilleur: "Appareils Numériques", NMB-003 édictée par l'Industrie Canada.

## **Für EMVG**

Dieses Produkt ist zum Gebrauch im Wohnbereich, Geschäfts-und Gewerbebereich sowie in Kleinbetrieben vorgesehen.

## **Für 3. GSGV**

Maschinenlärminformationsverordnung 3. GSGV, 18.01.1991: Der höchste Schalldruckpegel beträgt 70 dB(A) oder weniger gemäß EN 27779.

## **MODEL NAMES**

Model DR-2580C is identical to model M11051.

# Canon

**CANON ELECTRONICS INC.**

1248, SHIMOKAGEMORI, CHICHIBU-SHI, SAITAMA 369-1892, JAPAN

**CANON U.S.A. INC.**

ONE CANON PLAZA, LAKE SUCCESS, N.Y. 11042, U.S.A.

**CANON CANADA INC.**

6390 DIXIE ROAD, MISSISSAUGA, ONTARIO L5T 1P7, CANADA

**CANON EUROPA N.V.**

BOVENKERKERWEG 59-61, P.O.BOX 2262, 1180 EG AMSTELVEEN, THE NETHERLANDS

**CANON LATIN AMERICA, INC.**

703 WATERFORD WAY, SUITE 400 MIAMI, FLORIDA 33126, U.S.A.

**CANON AUSTRALIA PTY. LTD.**

1 THOMAS HOLT DRIVE, NORTH RYDE, SYDNEY. N.S.W, 2113. AUSTRALIA

**CANON SINGAPORE PTE. LTD.**

1 HARBOUR FRONT AVENUE #04-01, KEPPEL BAY TOWER, SINGAPORE 098632

**CANON HONGKONG COMPANY LTD.**

19TH FLOOR, THE METROPOLIS TOWER, 10 METROPOLIS DRIVE, HUNGHOM, KOWLOON, HONG KONG.



\*CE-IE-452\*