



## Using Google Cloud Print

You can use your Canon printer for Google Cloud Print, following the procedures explained below. In Google Cloud Print, you will be able to print from anywhere you like using a PC, smartphone, or other types of PDA.



### **What to do - Outline**

You need to perform the following to use your Canon printer for Google Cloud Print:

1. Prepare the following:

- a) Google account information (Your e-mail address and password to log in Google.)
- b) Printer Supporting Google Cloud Print
- c) PC, smartphone, or other types of PDA connected to the Internet
- d) One sheet of A4 plain paper

2. Check the printer connection environment. The printer needs to be connected to the Internet via an access point or router.

3. Register the printer to Google Cloud Print.

## Preparing the items required

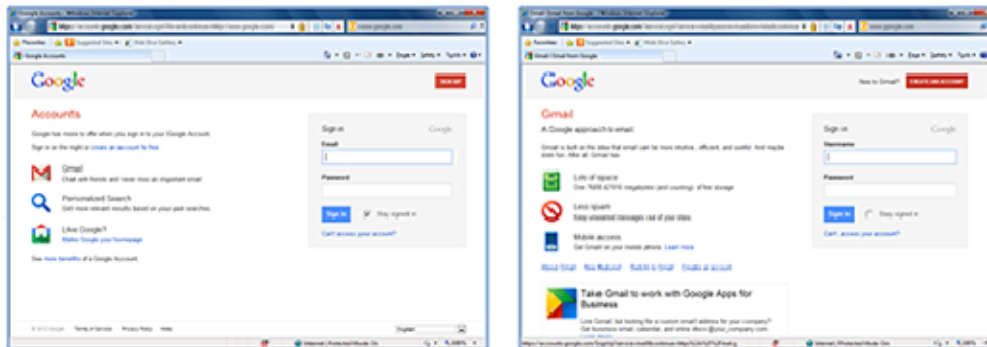
To use the printer for Google Cloud Print, you need to register the printer to Google Cloud Print.

### Prepare the following:

- a) Google account information Your e-mail (Gmail) address and password to log in to Google. If you do not have them, you have to create your own account. To create an account, access to the Google Accounts page, or click [**CREATE AN ACCOUNT**] in the upper right corner of the Gmail: Email from Google (Google log-in) page.

### Note:

The pages you will see may differ from the ones given below.



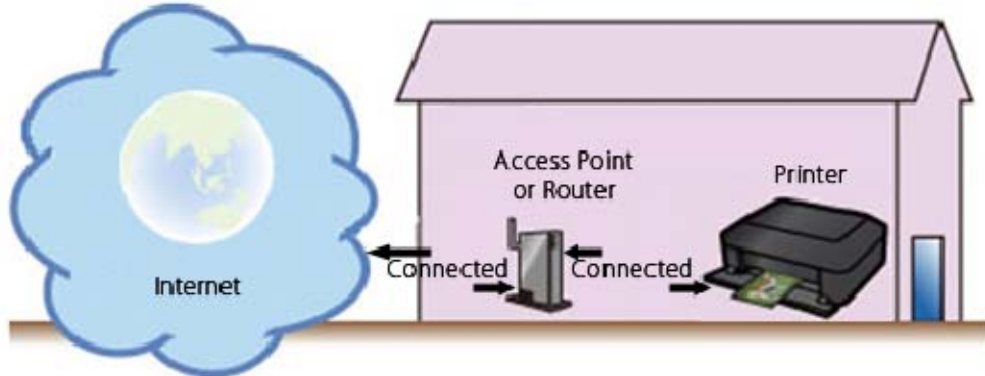
- b) Printer

- c) PC, smartphone, or other types of PDA The PC, Smartphone, or other types of PDA needs to be connected to the Internet (including via the 3G line).

- d) One sheet of A4 plain paper

## Checking the printer connection environment

To use the printer for Google Cloud Print, the printer needs to be connected to the Internet. Confirm that the printer is connected to an access point or router, and that the access point or router is connected to the Internet.

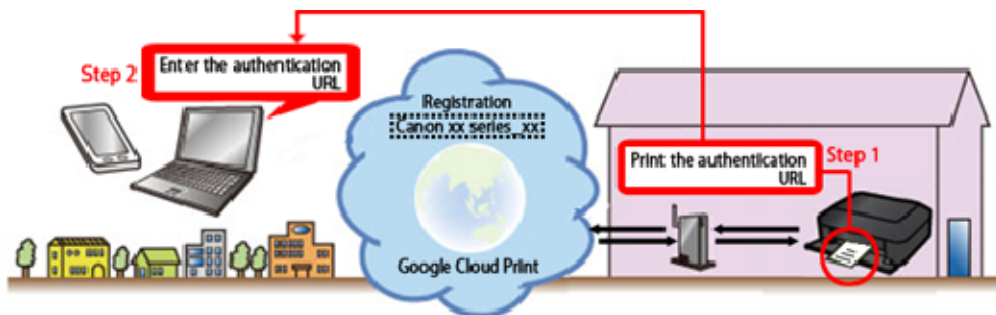


### CAUTION

If the printer is not connected to the access point or router, download the manual [ [Guide for Printer Setup for Network](#) ] (PDF) from the Canon download site, and follow the instructions to establish the connection.

## Registering the printer to Google Cloud

Print Follow the procedures below to register the printer to Google Cloud Print.



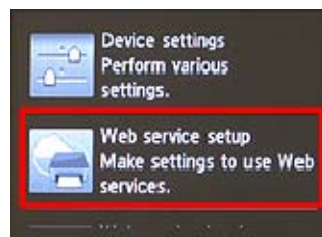
## 1. Print the authentication URL

(1) Confirm that the printer is turned on.

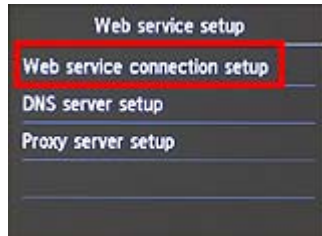
(2) Flick the screen right or left, and tap [ **Setup** ].



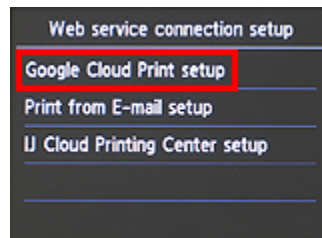
(3) Tap [ **Web service setup** ].



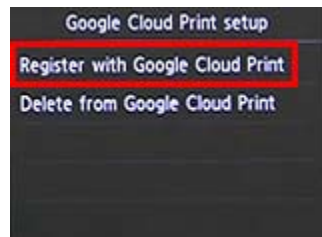
(4) Tap [ **Web service connection setup** ].



(5) Tap [ **Google Cloud Print setup** ].



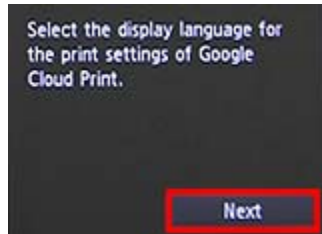
(6) Tap [ **Register with Google Cloud Print** ].



(7) At the following message, tap [ **Yes** ].



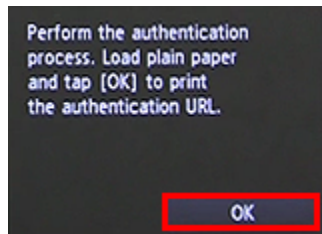
(8) Tap [**Next**].



(9) At the following screen, tap the language you select.



(10) At the following message prompting you to print the authentication URL, set A4 paper in the cassette and tap [**OK**].



The authentication URL is printed.













