



# How to Use Google Cloud Print

## Firmware Update Procedure

# How to Use Google Cloud Print

## •Firmware Update Procedure

### Requirements for Firmware Update

- Computer on which the printer driver is installed.
- Printer that you are using
- USB cable
- Printer Update Utility

### Check Whether Update is Necessary

You can check whether an update is required by printing the nozzle check pattern. –[Click here for information](#).

Check the software (firmware) version "Ver. X.XXX" that was printed in the nozzle check pattern print results.


- If the firmware version is Ver. 3.000 or later  
Firmware update is unnecessary because the firmware supports AirPrint and Google Cloud Print.
- If the firmware version is earlier than Ver. 3.000  
The firmware supports AirPrint only. To use Google Cloud Print, update the firmware according to the instructions in next section, "Firmware Version Update Procedure."
- If the firmware version is not printed  
Firmware update is necessary. Update according to "Firmware Version Update Procedure" described below.

### Firmware Version Update Procedure

1. Download the Printer Update Utility – [Click here for instructions](#)
2. Connect the computer and the printer by using a USB cable.  
If a LAN cable or a USB cable for camera connection is connected, disconnect those cables. For models with card slots, remove all the cards if they are inserted in the card slots.

#### Note

Make sure that only one printer is connected to the computer via a USB cable.

- Double-click  (Printer Update) to start the update utility.
- Check the contents of **Step 1** that is displayed in the Printer Update Utility, turn on the printer power, and then click **Next**.

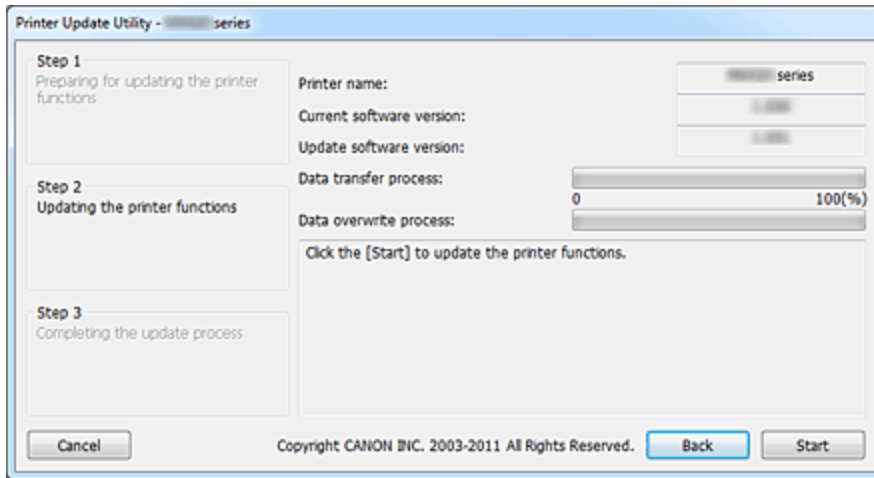
#### Note

- If an error message is displayed, the possible causes are as follows:
  - Cause (1): The USB cable is not connected.  
Corrective action: Connect the USB cable, and start over from step 1.
  - Cause (2): The downloaded update file is for a different printer.  
Corrective action: Download the file for the printer to be updated, and start over from step 1.

# How to Use Google Cloud Print

## •Firmware Update Procedure

- Check the contents of **Step 2** that is displayed in the Printer Update Utility, turn on the printer power, and click **Start**.



**Printer name:** Name of the printer connected to the computer.

**Current software version:** Software version of the connected printer.

**Update software version:** Software version to which the printer is to be updated at this time.

### ► Important

- Do not turn off the printer or disconnect the USB cable until the update is complete. Doing so may cause an error.

### 📖 Note

- If you are unable to click **Start**, the update was attempted on a printer that does not require firmware overwriting. Check the **Current software version** again. If it does not require the update then cancel it.
- During the update, the error lamp on the printer will flash orange.

## How to Use Google Cloud Print

### •Firmware Update Procedure

- When the **Step 3** window appears in the Printer Update Utility, check the message contents, and click **Quit**.
- Press the printer power button to turn off the printer.

You must turn off the power and then turn it back on again. Otherwise, the printer will not operate properly.

If the power is turned off during the update, the update will not end normally.

If the printer does not operate normally even if you turn off the printer power and then turn it back on again, the update may not have ended normally

This completes the firmware update. If you are using the printer with LAN connection, disconnect the USB cable first and then, connect the LAN cable.

#### Important

- If you will be using the printer in a LAN connection, return the regular printer setting to LAN connection.

[Click here](#) for information on deleting the additional printer listing which is created when performing the update.