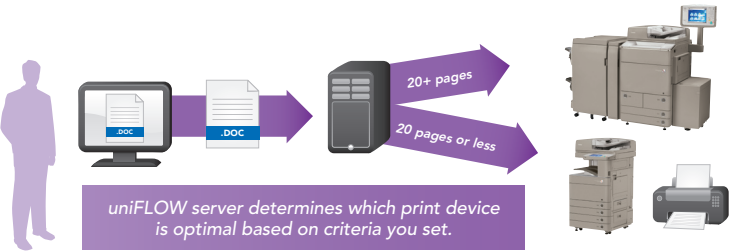


Track, Allocate, and Bill Print-Related Activity

Does your business bill clients for output costs, or simply account for such expenses internally by department? Canon offers a variety of ways to facilitate comprehensive tracking and output management with uniFLOW Output Manager.



Maximize Efficiency of All Your Print Devices

Why allow users to send large jobs to inefficient output devices? With Canon imageRUNNER ADVANCE devices and uniFLOW, you don't have to. For example, you can require all large jobs to be rerouted to cost-effective devices.



Leverage Reporting to Reduce Costs

Analytical reports deliver insight into who's printing and how much. You can use this information to identify abusive behaviors and find ways to cut costs.



uniFLOW OM Notification:
This print job "Analysis Report" you have sent to My Desktop Printer has been deleted because you are restricted from using Simplex Print.

Control and Influence User Behavior

uniFLOW offers a number of additional advantages geared toward reducing costs. It can require authorization for large print jobs, inform users of their activity, display pop-up messages that encourage more economical print options, and much more.



Reduce Wasted Prints

Print jobs sent over the network are held until users walk up and enter their user IDs and passwords, or scan their badges or cards. This can greatly cut down on waste from forgotten prints that would never be picked up.

Featured in this Canon RUN solution:

- imageRUNNER ADVANCE Models
- imageRUNNER ADVANCE Tracker
- Access Management System
- imageWARE EMC Accounting Management Plug-in
- uniFLOW Output Manager
- Driver Configuration Tool

Canon

imageRUNNER ADVANCE Solutions

COST RECOVERY

Managing Output for Savings



- Want to maintain productivity, yet keep unnecessary copying and printing to a minimum?
- Wish you could manage print output by user, department, or client?
- Need to set specific print limits for each person in your organization?

ADVANCE to options that track and reduce output costs.

Many employees, either through a lack of effort or lack of knowledge, choose inefficient ways to print, copy, scan, and fax. Over time, those poor choices add up and have a negative impact on your bottom line.

Canon imageRUNNER ADVANCE devices offer a number of built-in and optional output solutions that enable you to track and reduce paper and toner usage. You can influence user behavior in positive ways, and even mandate cost-conscious activity.



Ensure that only authorized users can print and copy in color

Link device usage to cost accounting systems.

Track, monitor, and analyze device usage with easy-to-use tools.

Encourage users to print and copy more responsibly.

Canon

image*ANYWARE*

1-800-OK-CANON
www.usa.canon.com

Canon U.S.A., Inc.
One Canon Plaza
Lake Success, NY 11042

LET YOUR BUSINESS RUN



CANON and IMAGERUNNER are registered trademarks of Canon Inc. in the United States and may also be registered trademarks or trademarks in other countries. IMAGEANYWARE is a trademark of Canon. All other referenced product names and marks are trademarks of their respective owners and are hereby acknowledged.
Products shown with optional accessories/equipment.
Specifications and availability subject to change without notice.
©2009 Canon U.S.A., Inc. All rights reserved.



imageRUNNER
ADVANCE

Do print- and copy-related activities waste money at your company?

Like every business today, you try hard to keep expenses under control. But it's not easy. Users need access to office technology to get their work done. Where do you draw the line? And how can you enforce policy decisions regarding use?



"I need to encourage productivity, but we must control access to costly output capabilities."

Users have unlimited access to all MFP device features.



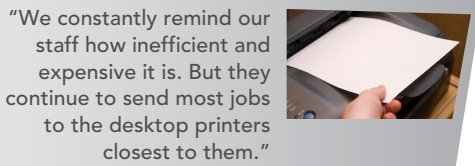
Users regularly print in color — without thinking of the costs involved.



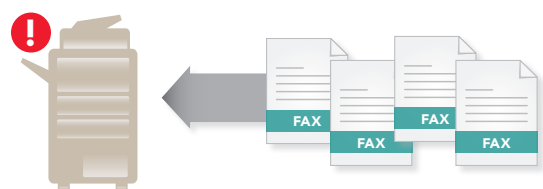
Users print as many copies as they like, many of which end up in the recycle bin.



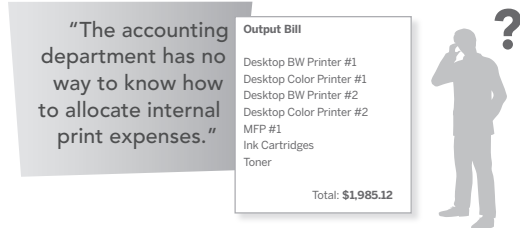
Users always print simplex (one sided).



Users print to their color desktop printers whenever it seems more convenient.



Incoming faxes — including junk faxes — pile up and waste paper.



"The accounting department has no way to know how to allocate internal print expenses."

Output Bill
Desktop BW Printer #1
Desktop Color Printer #1
Desktop BW Printer #2
Desktop Color Printer #2
MFP #1
Ink Cartridges
Toner
Total: \$1,985.12



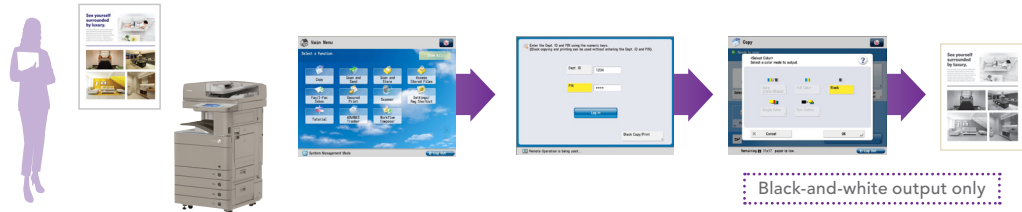
Billing department has no way to know what print expenses should be billed back to clients.

Discover Just the Right Solution to Help Track and Reduce Output Costs

Canon provides a wide array of solutions designed to bring print- and copy-related costs under control. At the individual level you can discourage, prevent, and reduce wasteful print and copy behaviors. Canon technology also enables you to analyze usage patterns to better manage your fleet of print devices.

Reduce Costs by Managing and Limiting User Access

The standard Access Management System (AMS) on imageRUNNER ADVANCE models offers your business control over who can access costlier features like color copying and printing. The new Function-Level Authentication capability will force a user to log in after selecting a feature — thereby granting or restricting access to the function.

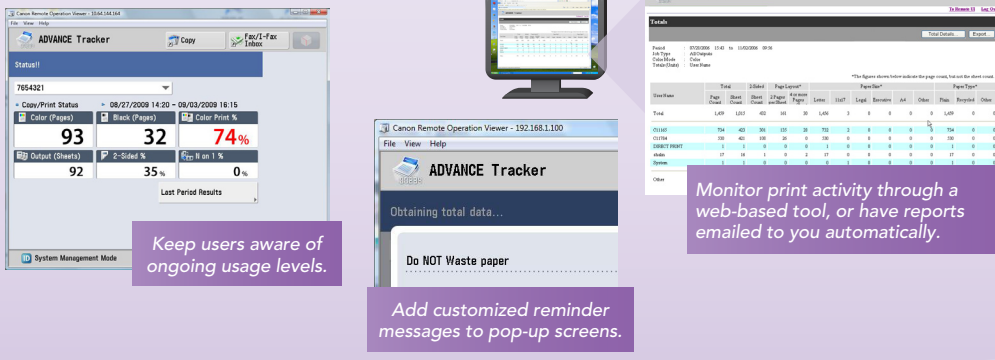


Walk-up users must authenticate prior to accessing color copying. Guest users may access predefined features like black-and-white copy.

Features that are not essential for a specific user can be restricted by being unavailable and grayed out.

Influence Positive User Print Behaviors

Canon imageRUNNER ADVANCE Tracker — a serverless application — helps you monitor, influence, and reduce wasteful user print behaviors on an imageRUNNER ADVANCE. The application reinforces awareness of user output with pop-up reminder screens on the imageRUNNER ADVANCE user interface. It also monitors individual and group output activity through a web-based application to help your business manage costs.



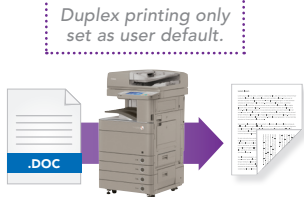
Keep users aware of ongoing usage levels.

Add customized reminder messages to pop-up screens.

Monitor print activity through a web-based tool, or have reports emailed to you automatically.

Gain Control over Your Entire Print Environment

Now you can track enterprise device activity, manage output costs, and recover output expenses. Canon imageWARE EMC Accounting Manager Plug-in lets you maintain complete oversight from one web-based location. You can automatically export .CSV files into Excel, then generate charts and graphs that show device usage.



Ensure That Users Print Efficiently

You can use the new Driver Configuration tool to ensure that everyone prints efficiently. With it, you can set defaults so that when users try to print, they can only select from among the more cost-effective options such as duplex or black-and-white printing.



Identify Abusive Behavior

Canon technology includes analysis tools that enable you to know who is using the devices, and how much. You can use this data to set limits or restrictions, or simply inform users that they need to change their ways.