



imageRUNNER ADVANCE Solutions

PRODUCTIVITY

Device & Office Efficiency



- Feel like whenever you urgently need a printout, office technology does not cooperate?
- Looking for ways to eliminate the extra steps and guesswork from scanning?
- Wish there were alternate ways to get around print problems when they occur?

ADVANCE to an office where output bottlenecks are a thing of the past.

For most offices, access to print, copy, and scan capability is an essential need. So if a problem arises, the resulting backups and delays can drag down everyone's productivity.

Canon imageRUNNER ADVANCE solutions help prevent and overcome common bottleneck trouble spots with ease.



Leverage processor speed for both quality and convenience.

Quickly combine multistep tasks into one smart button.

Scan mixed-size duplex originals more efficiently.

Make last-minute driver setting changes at the device.



imageRUNNER
ADVANCE

Shouldn't office equipment help us get work done?

MFPs are supposed to provide efficiency. But is it efficient when a minor error brings down the whole device? And what good are all these advanced features if they are so difficult for the average person to use?



"How long is my print going to take?"



"I could have sworn I just printed that. Guess I'll just resend it."



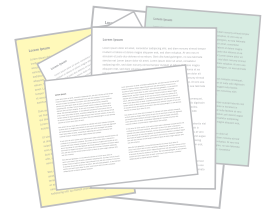
After problem job clears, re-sent jobs waste paper.

One print error can hold up other jobs, then cause confusion for other users and waste consumables.

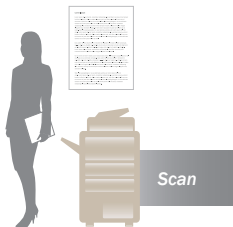


"Sometimes I think print options are set correctly, then I see I must resend the job again more carefully.

"It seems a waste, but I don't know how to get around it."



Odd-sized and duplex originals must be scanned — a slow, manual process that must be overseen.



Users don't have the ability to automate regular processes, so they spend more time on each task.



Presentable booklets require manual finishing.

"There are five large print jobs ahead of mine. Now my meeting will start late, and I will look disorganized."



Break Through Office Bottlenecks

Canon imageRUNNER ADVANCE systems have been redesigned from the ground up to help make every task easier to accomplish. A large, colorful touchscreen features intuitive buttons and can be easily customized to suit the needs of your business or department. There are also significant improvements to the physical device itself, including more powerful processing, a high-capacity document feeder, optional keyboard access, USB access, and more.



Scan Mixed-Sized Originals in One Shot

Go ahead. Place a stack of mixed-sized sheets in the document feeder. The Canon imageRUNNER ADVANCE system can handle it.



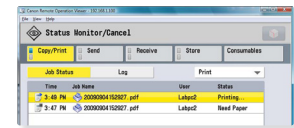
Capture Both Sides of a Sheet at Once

Now you can accurately scan both sides of a sheet in a single pass, effectively doubling the scanning speed for two-sided documents on some models.



Maximize Paper Use Without Sacrificing Speed

Many Canon imageRUNNER ADVANCE models can print duplex (both sides of a sheet) at incredible speeds.



Clear the Way for All Jobs That Don't Have Print Issues

If a user sends a print job and it encounters missing paper, an incorrect paper size, or other issue, the Suspend Job Timeout feature will help recognize the problem and hold the job so others can pass. Once corrected, the suspended job can be released.

Combine Multiple-Step Tasks into a Customized, One-Touch Button

Streamline your everyday workload by automating repetitive tasks. Workflow Composer enables users to group commonly used, multiple-step processes into one convenient button that can be placed in a Quick Menu screen, so it's easily accessible to all from the user interface.



Execute Urgent Copy or Print Tasks Without the Wait

Job Interrupt allows you to stop any print or copy job in progress to get a more urgent copy done.

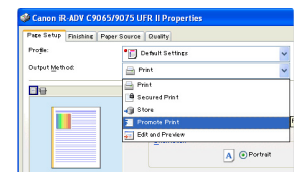
Get More Value from This Robust Multitasker

Canon imageRUNNER ADVANCE devices deliver more speed and performance than ever. The new, Advanced imageCHIP System Architecture divides responsibilities between two boards. This enables users to utilize multiple device functions simultaneously without significant compromise in speed or quality.

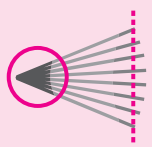
Main board
Handles advanced image processing for copy, print, and scan functions



Accelerator board
Powers information processes such as the user interface, networking, and overall device functionality

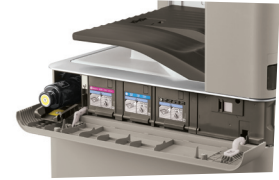


You can also prioritize a print job by simply moving it to the top of the queue with the Promote Print feature.



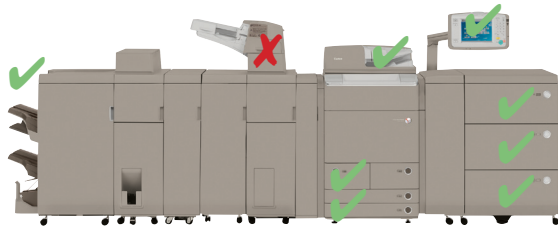
Create Neatly Finished and Trimmed Booklets In-line

Canon offers options for finishing capabilities such as hole punching, saddle stitching, folding, and booklet making. In fact, on imageRUNNER ADVANCE C9000 Series models, large, stapled booklets can be trimmed in-line, so the right edge is neat and presentable. Also for the imageRUNNER ADVANCE C9000 Series, a professional hole puncher offers a variety of punch options for offline binding.



Don't Let Low Toner Slow You Down

Have a big output job ready for the queue? Using imageRUNNER ADVANCE Desktop, you can check toner levels from your PC before you send it for print. Canon also offers high-yield consumables and a toner buffer so you can replace toner while jobs continue to print.



Don't Allow Minor Issues to Halt Progress

No longer do you have to let a temporary setback with a scanner or printer affect everything else on your MFP. Even if one component is temporarily offline, failover features maintain operation of all other working functions including Advanced Box, scanning, sending, and the Remote User Interface.



Make Late-Stage Changes at the Device

Sometimes it's easy to forget to include a simple finishing option – like stapling – to a print job before sending. In a Secured Print workflow with uniFLOW*, you can make last-minute driver settings to your document at the device without having to return to your desk and resubmit the job.



Stay Productive Even When a Device Becomes Unavailable

Ever send a print job to a device only to have it go down because of a supply-related or other issue? With uniFLOW*, you can immediately authenticate at another networked device and release the job there.

*For additional information, please contact a Sales Representative from Canon Latin America, Inc., or Authorized Dealer.

Featured in this Canon RUN solution:

- Canon imageRUNNER ADVANCE Models
- imageRUNNER ADVANCE Desktop
- Workflow Composer
- uniFLOW*

LET YOUR BUSINESS RUN



Canon

image*ANYWARE*

www.cla.canon.com

Canon Latin America, Inc.
703 Waterford Way,
Suite 400
Miami, FL 33126

CANON and IMAGERUNNER are registered trademarks of Canon Inc. in the United States and may also be registered trademarks or trademarks in other countries. IMAGEANYWARE is a trademark of Canon. All other referenced product names and marks are trademarks of their respective owners and are hereby acknowledged. Products shown with optional accessories/equipment. Specifications and availability subject to change without notice.
©2009 Canon U.S.A., Inc. All rights reserved.