



imageRUNNER ADVANCE Solutions

ACCESSIBILITY

Maximum Productivity for All



- Need office equipment designed to maximize productivity for all?
- Is your office technology difficult for users with limited mobility to operate?
- Wish your devices could enable your users to accomplish more?

ADVANCE to office technology that helps all users get work done.

Canon delivers office equipment solutions that help boost productivity for the widest possible range of business users.

Canon imageRUNNER ADVANCE MFP systems feature improved access and operation for users with limited sight, hearing, and mobility.

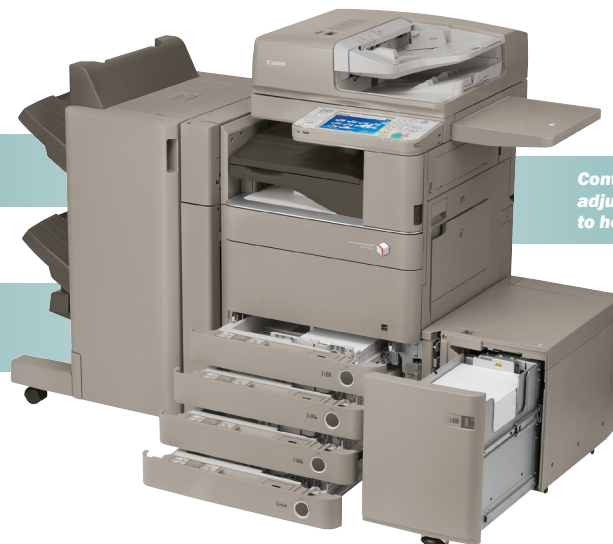


Toner bottles can be replaced with minimal effort.

Control panels are larger, adjustable, and customizable to help accommodate any user.

Paper drawers spring open at the touch of a button and automatically detect paper size.

Main functionalities can be controlled remotely from networked PCs.



imageRUNNER
ADVANCE

A More Accessible Device for Everyone

Sometimes accessibility stops short at the user interface. Canon imageRUNNER ADVANCE systems offer a battery of additional features that enable all users to work better and faster. Some are practical enhancements that benefit all users. Others are meant to increase accessibility specifically for users with sight, hearing, and upper and lower mobility disabilities.



Simplify Input of Commands

With Canon's Voice Operation Kit you can control imageRUNNER ADVANCE devices with your voice and through simplified tactile input. The kit features a speaker with headphone jack option for privacy and a flexible microphone.



Tactile Controls Increase Functionality

Braille Label Kits are fully compatible with the imageRUNNER ADVANCE systems. These transparent peel-and-stick labels attach to device hard keys to create a tactile control panel.



Enter Information with More Ease Than Ever

Users can facilitate logins and document indexing right at the device using a USB keyboard.

Position Controls in Your Comfort Zone

Certain Canon imageRUNNER ADVANCE control panels can tilt or pan for better viewing angles from both standing and sitting positions.



Open-and-Shut Efficiency Within Reach

A practical ADF Access Handle enables users to easily close the document feeder from a seated position.



Hear Instructions Clearly

Like the Voice Operation Kit, Canon's Voice Guidance Kit features a software-driven speaker attached to the side of the device. Speech output guides users as they navigate hard key controls.



Change Toner and Paper Easily

New imageRUNNER ADVANCE models feature buttons to open paper drawers, and these paper drawers also auto-register standard paper sizes.

Toner doors open automatically during toner replacement process, and toner bottles are so easy to access and replace, most users can do it with one hand.

Provide Practical Controls for Every User

Canon imageRUNNER ADVANCE systems feature large, brightly colored TFT touchscreen interfaces with wider viewing angles and larger text. With many imageRUNNER ADVANCE models, you can reposition the panel for both standing and sitting positions, and an optional keyboard can be used to control the device.

Screen Layout

Enables access to more complex functions in fewer steps.

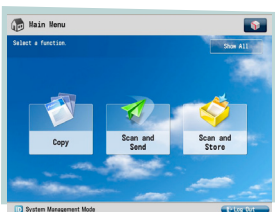
Consistent Interface Design

Easier than ever to operate and consistent across device models, the new interface will drastically lower the learning curve.



Find Your Task at a Glance

Clearly labeled touchscreen buttons help users find the tasks they need quickly. These Main Menu screens are customizable as well. Populate them with the buttons your teams need most often.



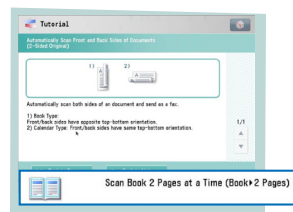
Leverage Larger Buttons

The number of buttons on the touchscreen user interface can be reduced in order to make the remaining ones larger than usual. This makes them even easier to see and locate quickly.



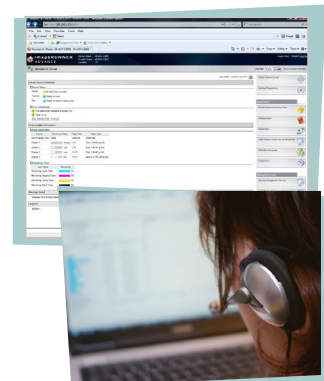
Improve Visibility

Color LCD control panels can “reverse” to display white text on a black background. This can boost clarity for users who may have varying visual abilities.



Follow Handy Tutorials

It's easy to access in-depth help files and tutorials. The tutorial button unlocks help features that guide users step by step on how to use a feature.



Remotely Access Visual and Auditory Screen Information

The Remote User Interface (RUI) enables users to view settings including device status, toner levels, paper levels and operate copy functions from their PC screens.

The RUI can be used with magnification and screen-reading software, making it more accessible and convenient for users with visual impairment, or who use wheelchairs.



Maintain Productivity from Your PC Desktop

With the optional Remote Operators Software Kit, users can operate imageRUNNER ADVANCE control panel functions from any networked PC. This enables basic device control for users with limited mobility or from a seated position.

By extending control over basic functions such as copy, print, scan, and fax via network, the remote interface also serves as an ideal way to deliver demos and training.



Empower Users and Whole Departments with Customized Quick Menus

Each user or group can create customized menu screens designed to handle their specific workflows. Quick Menu buttons can help users readily access frequently needed, commonly used functions within departments. They can be set as personal buttons for individual tasks or as shared buttons for group access. Quick Menu buttons can be customized on the interface as well. Users can designate the number of buttons, order of display, wallpaper design, and more.

Featured in this Canon RUN solution:

- Canon imageRUNNER ADVANCE Models
- Optional USB Keyboard
- Voice Operation and Voice Guidance
- Remote Operator's Software
- Remote User Interface (RUI)
- ADF Access Handle
- One-Touch Paper Drawers



www.cla.canon.com

Canon Latin America, Inc.
703 Waterford Way
Suite 400
Miami, FL 33126

LET YOUR
BUSINESS
RUN



CANON and IMAGERUNNER are registered trademarks of Canon Inc. in the United States and may also be registered trademarks or trademarks in other countries. IMAGEANYWARE is a trademark of Canon. All other referenced product names and marks are trademarks of their respective owners and are hereby acknowledged.
Products shown with optional accessories/equipment.
Specifications and availability subject to change without notice.
©2009 Canon U.S.A., Inc. All rights reserved.